



# Case Study Golpla

## **Location:**

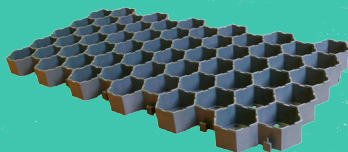
Wilmington Academy  
Common Lane  
Wilmington  
Dartford

## **Client:**

Wilmington Academy

## **Project:**

Wilmington Academy



## **Contractor:**

O'Keefe Construction



## **Merchant:**

Rudridge



## **Geosynthetics Limited**

Fleming Road  
Harrowbrook Ind. Est  
Hinckley  
LE10 3DU  
Tel. 01455 617 139  
sales@geosyn.co.uk  
www.geosyn.co.uk

**Geosynthetics Limited were contacted in June 2012 regarding a project at Wilmington Academy. This project was for the car park, which was to be used by staff and visitors and required a product which was strong enough to protect the grass, whilst keeping the natural aesthetics of the surrounding area.**

Geosynthetics Golpla was suggested as it could be used for both types of surface and the Pre-grown system greatly improves the success of a grass road construction by eliminating issues caused when soil and seeds are used.

Wilmot Dixon were awarded the main contract and then subcontracted the groundwork's package to O'Keefe Construction. O'Keefe had previously used our Golpla system with great success so insisted on staying with the Golpla specification, despite pressure to change to other materials. The decision was made to complete the car park surface with a gravel infill finish. To help identify between parking spaces and the road, different coloured gravels were selected as well as white demarcation units to show the individual bays by creating T-Shapes. In total, 2,372 square meters was required and deliveries were made between 3rd October and 2nd December 2013.

The low lying position of the car park was known to have drainage issues so a fast draining, porous surface was essential. Golpla has excellent drainage properties and allows rainwater to pass through easily

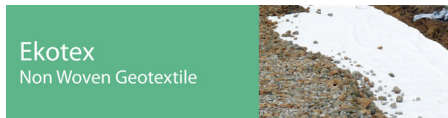
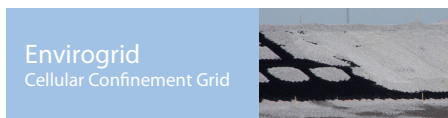
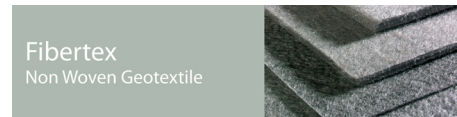
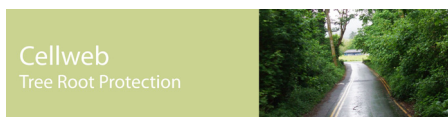
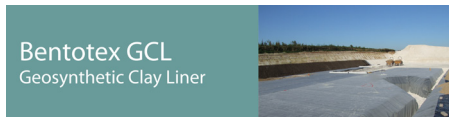
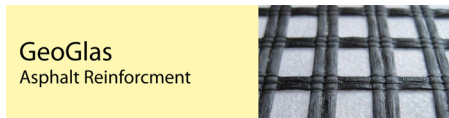
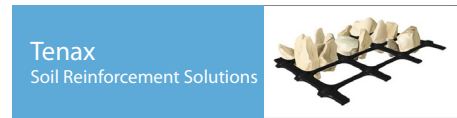
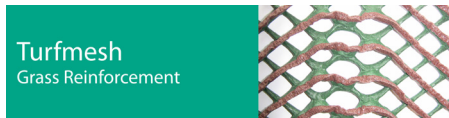
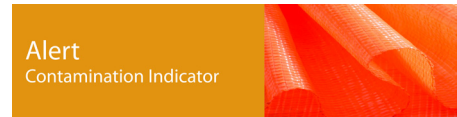
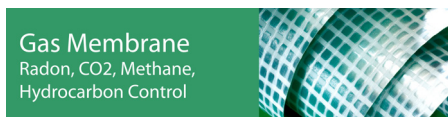
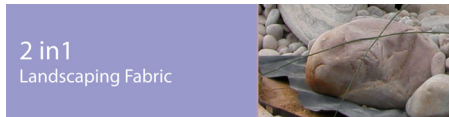
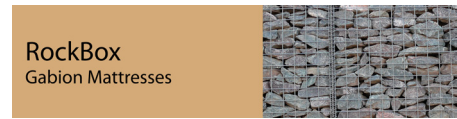
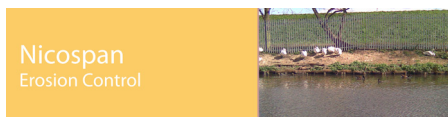
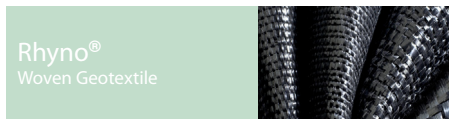


so to help the water permeate, O'Keefe installed a deeper, free draining sub-base with reduced fines.

During the Installation our Technical Sales Specialist for Grass Protection attended the site to offer his expert advice, free of charge. For gravel filled installations 38mm deep Golpla has the advantage over other systems by using 24% less infill material. The depth still provides the strength required for regular use by cars and LGV vehicles.

Golpla is available in a range of colours but the green units that were supplied on this project were an excellent match for the green gravel infill. The use of the contrasting beige colour to contrast the roads worked very well and Golpla is now available in beige from stock.





Geosynthetics Limited | Fleming Road | Harrowbrook Ind Est | Hinckley | Leicestershire | LE10 3DU