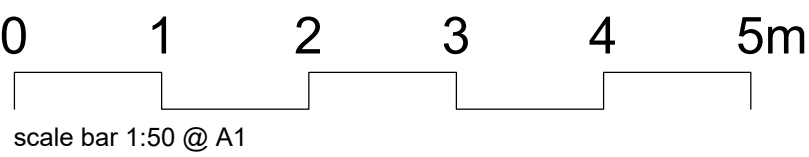


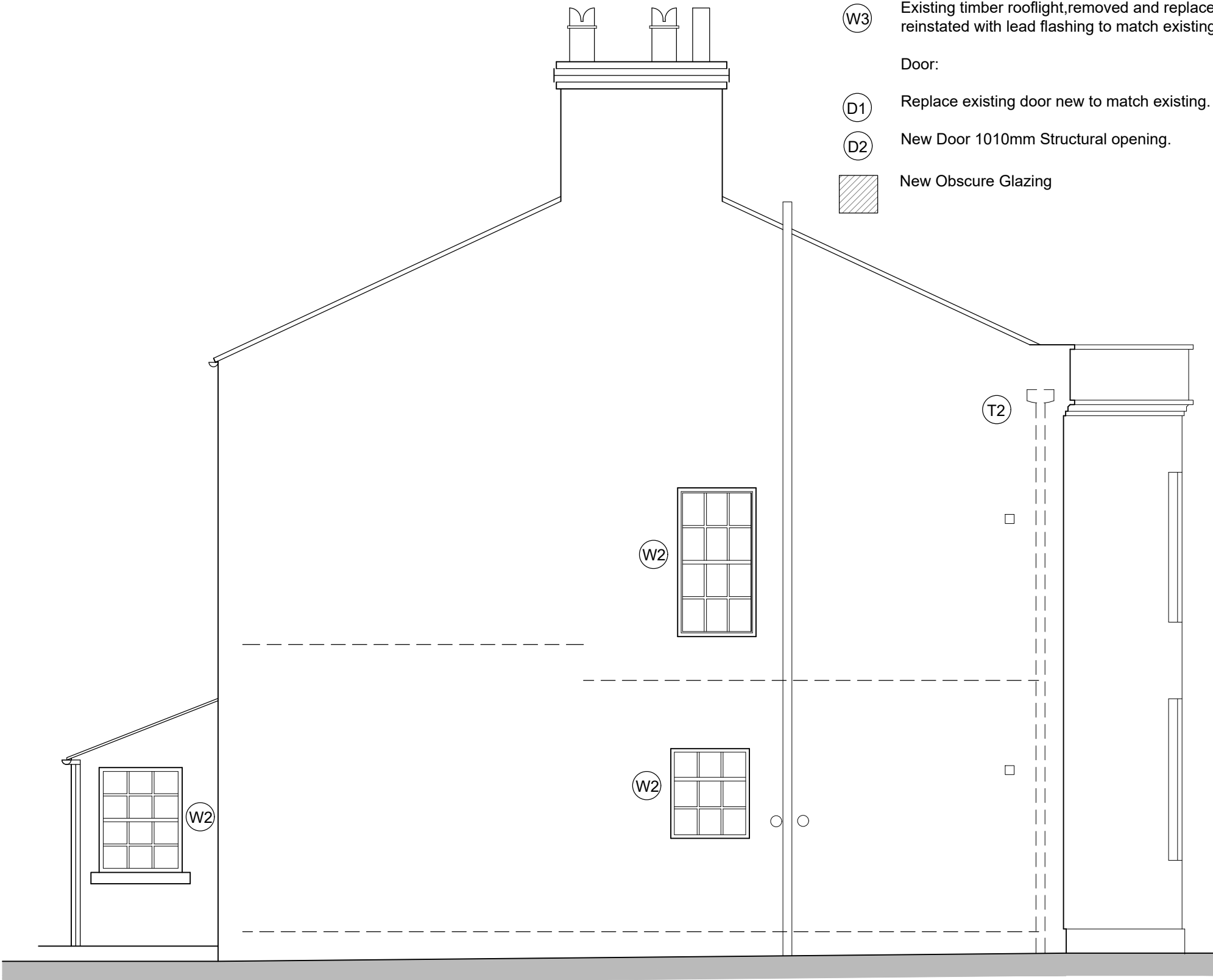
rice house st vincent's school liverpool

Hardwood vertical sliding box sash windows to match existing & ironmongery.

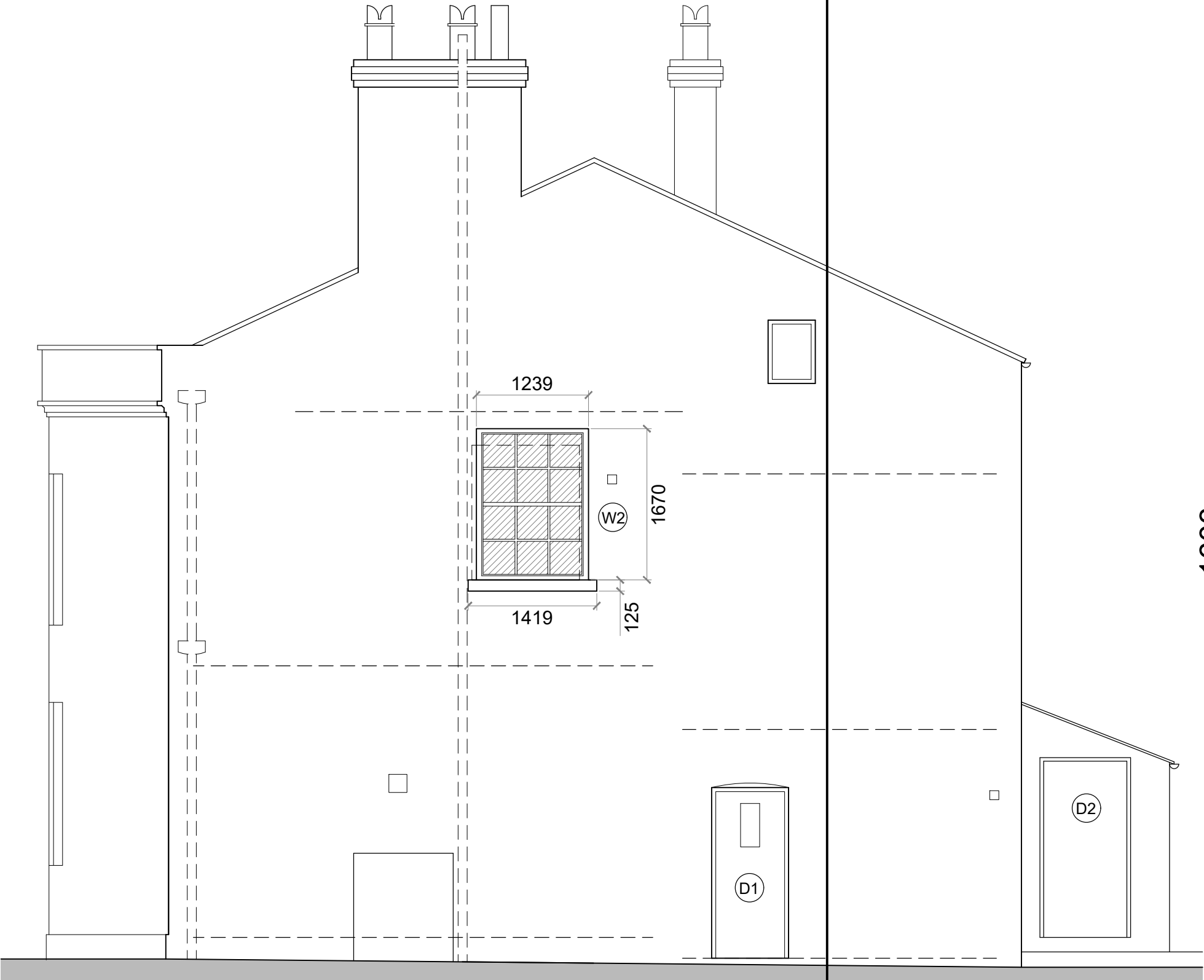
Rev A: 09.02.16 - Insulation added to window detail.
Rev B: 09.03.16 - Obscure glazing added.
Rev C: 19.04.16 - En-suites added.



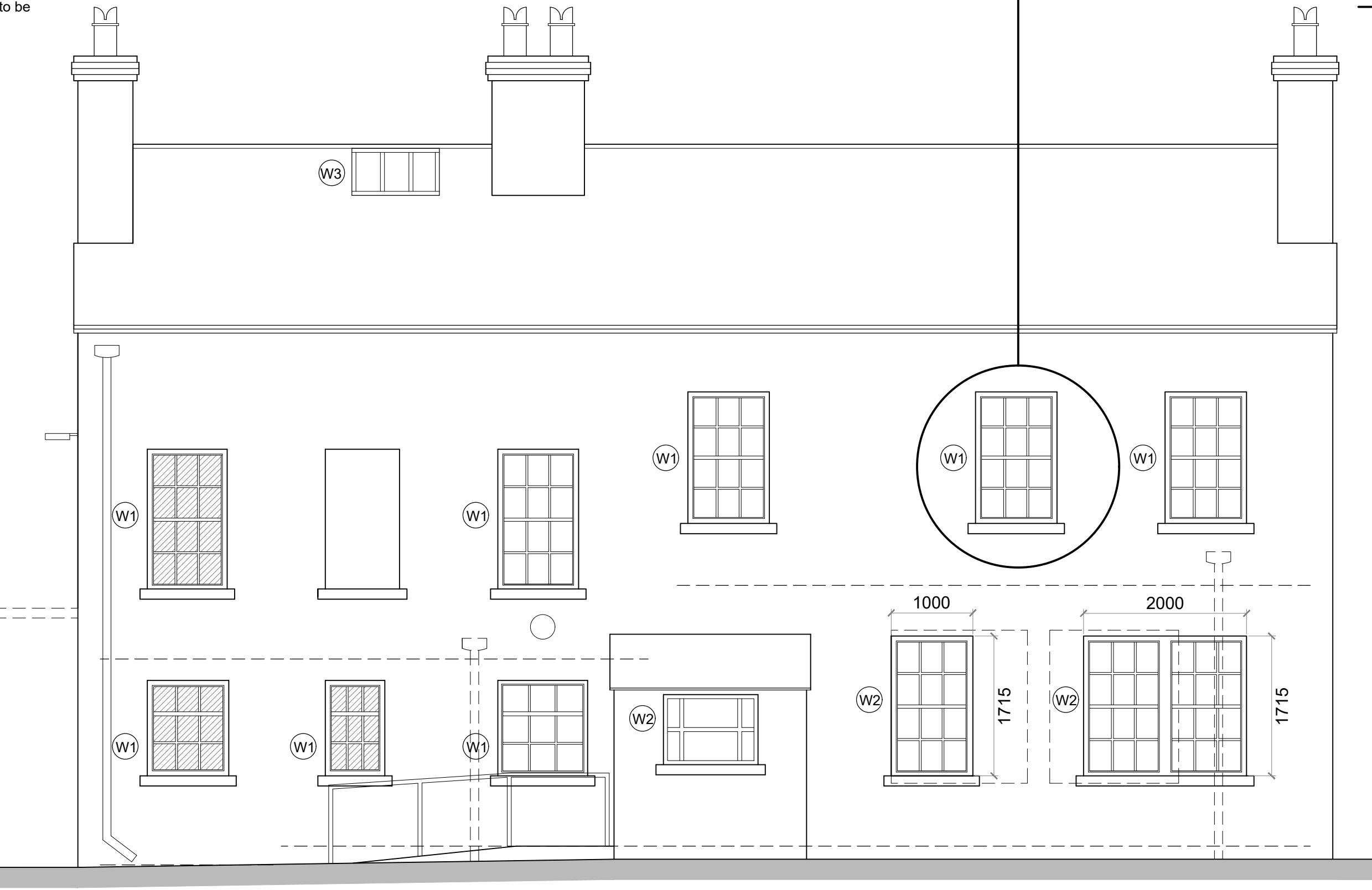
west elevation
[yew tree lane]



north elevation



south elevation



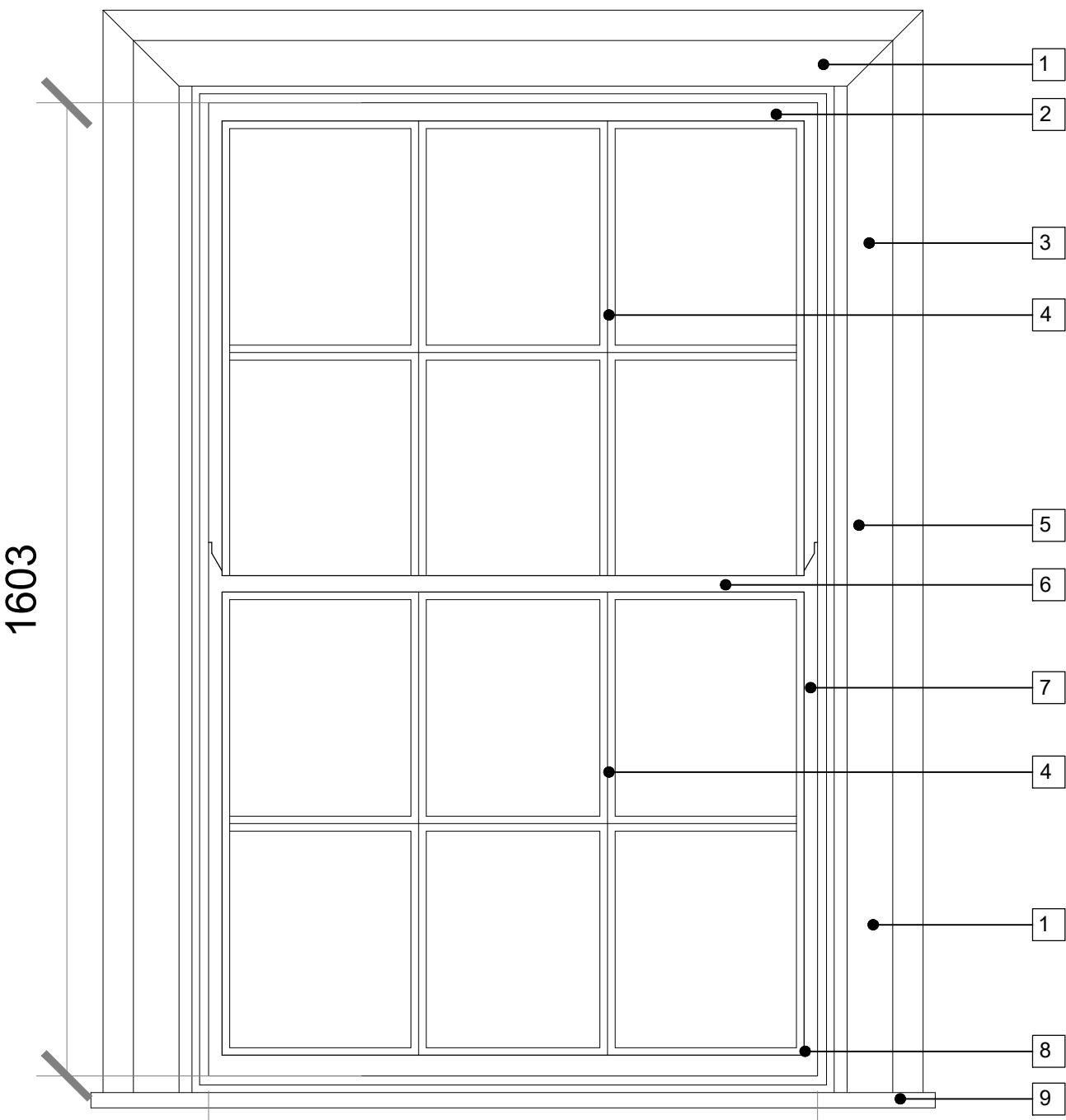
east elevation [st vincent's school]

existing sash window

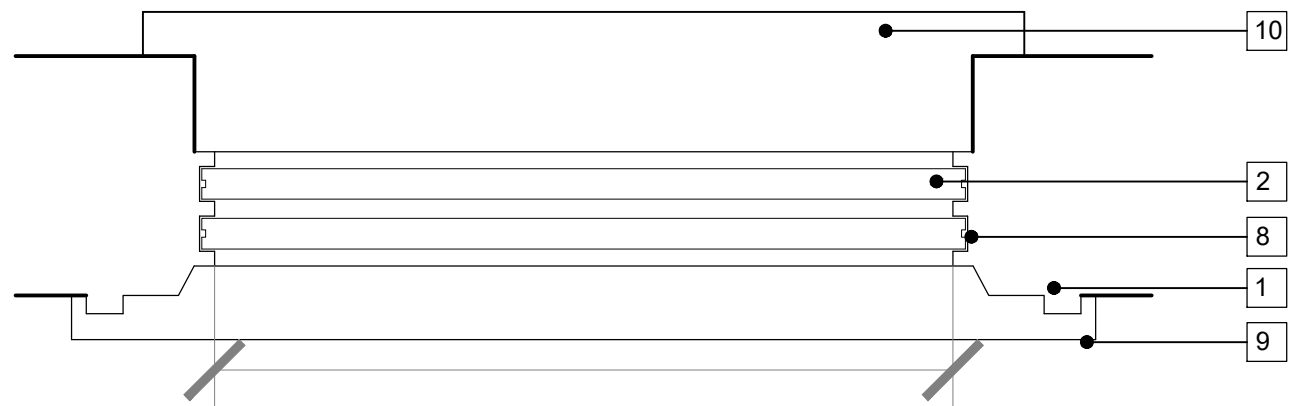
Internal view of existing sash window - scale 1:10

Vertical double-hung box framed sliding sash [c 1750 - 1850]

All existing windows to be removed - replace with hardwood sash windows to match existing.

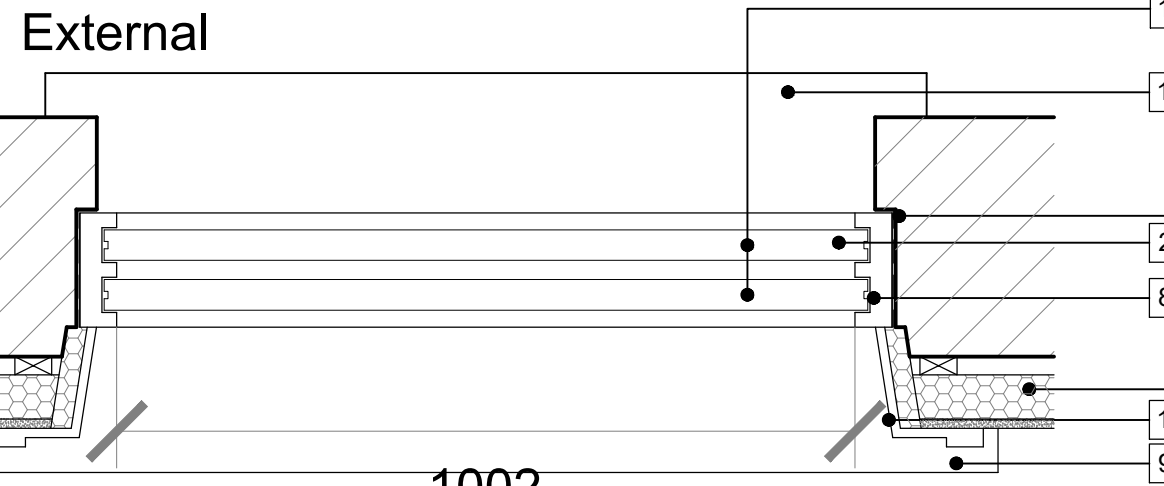


External 1002



Internal 1002

proposed sash window - with internal insulation



Internal 1002

Key of Components [match as existing]

- 1 Internal Timber Linings - Casing/Architrave
- 2 Top Rail of Top Sash
- 3 Sash cord/Weight pockets.
- 4 Glazing Bar - vertical/horizontal divides the Stiles and Rails - six over six panes
- 5 Pulley Wheel/Window lock.
- 6 Meeting Rail
- 7 Stile - restored
- 8 Bottom Rail of Bottom Sash
- 9 Top of timber cill
- 10 External Painted Stone cill
- 11 DPC
- 12 Insulated Plasterboard on trsw battens & dpc
- 13 12mm Overall Slimlite Double Glazed Units - 4mm Low E Glass/4mm Cavity/4mm Clear Glass - Filled with Krypton & Xenon.

St Vincent's School Liverpool

Elevations
Refurbished & New Windows

Drwg No: WA 42 - 13 Rev : C
Date: Sept 2014 Scale: 1:50, 1:10 @ A1 Checked by: jg

williams architecture
106 Timber Wharf Worsley Street Manchester M15 4LR