

Martins Building

Planning Application Dec 2010

Supplementary Information

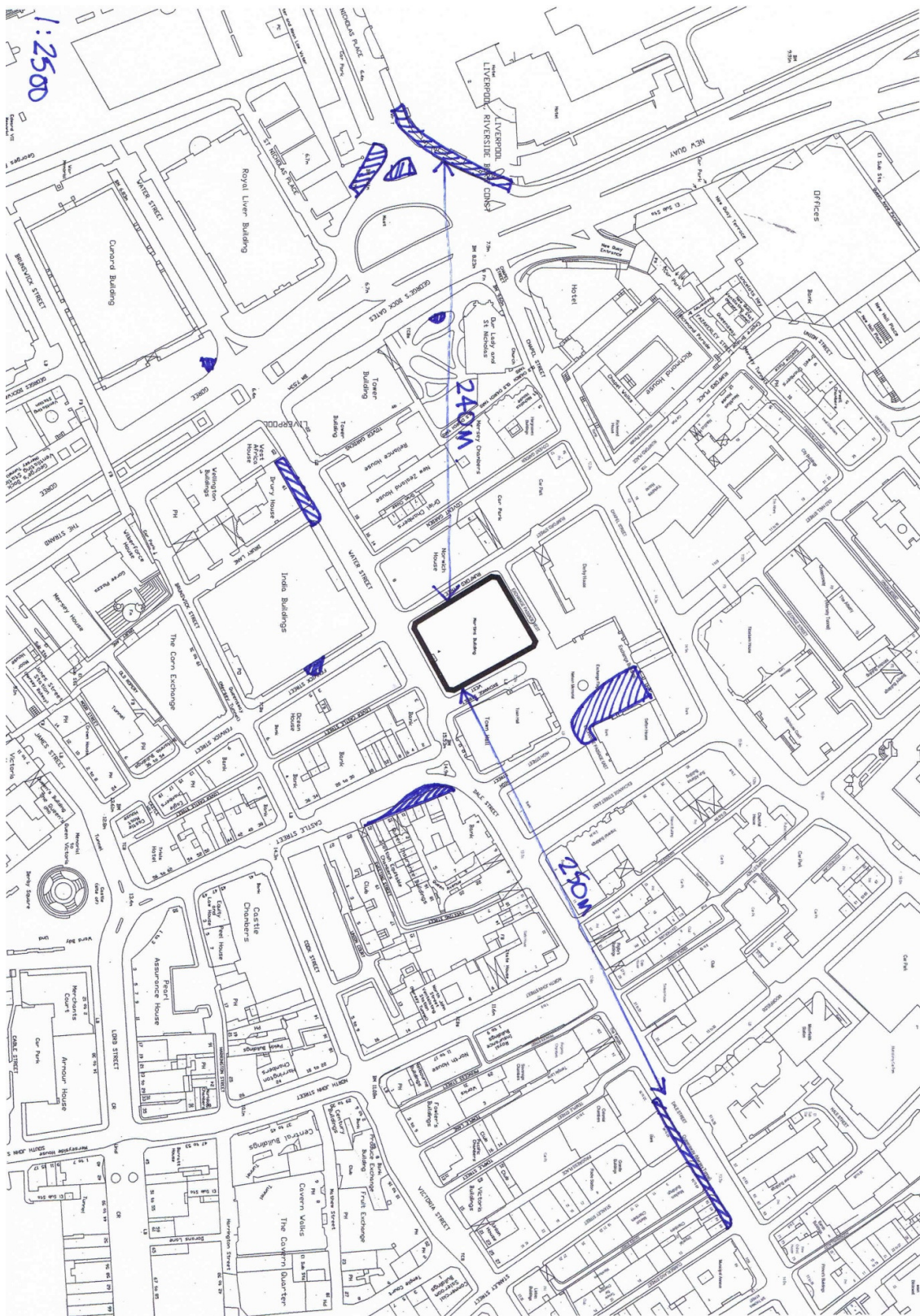
March 2011

Views of the building before and after
roof-top glass balustrades have been installed.

Dates photographs taken

Before: 27th January 2011

After: 24th February 2011



Map showing locations where loggias are visible



View from Castle Street / Sweeting St without balustrade



View from Castle Street / Sweeting St with balustrade



View from Castle Street without balustrade



View from Castle Street with centre and end panel balustrades



View from Castle Street with corner balustrade



View from Castle Street / Dale St without balustrade



View from Castle Street / Dale St with corner balustrade



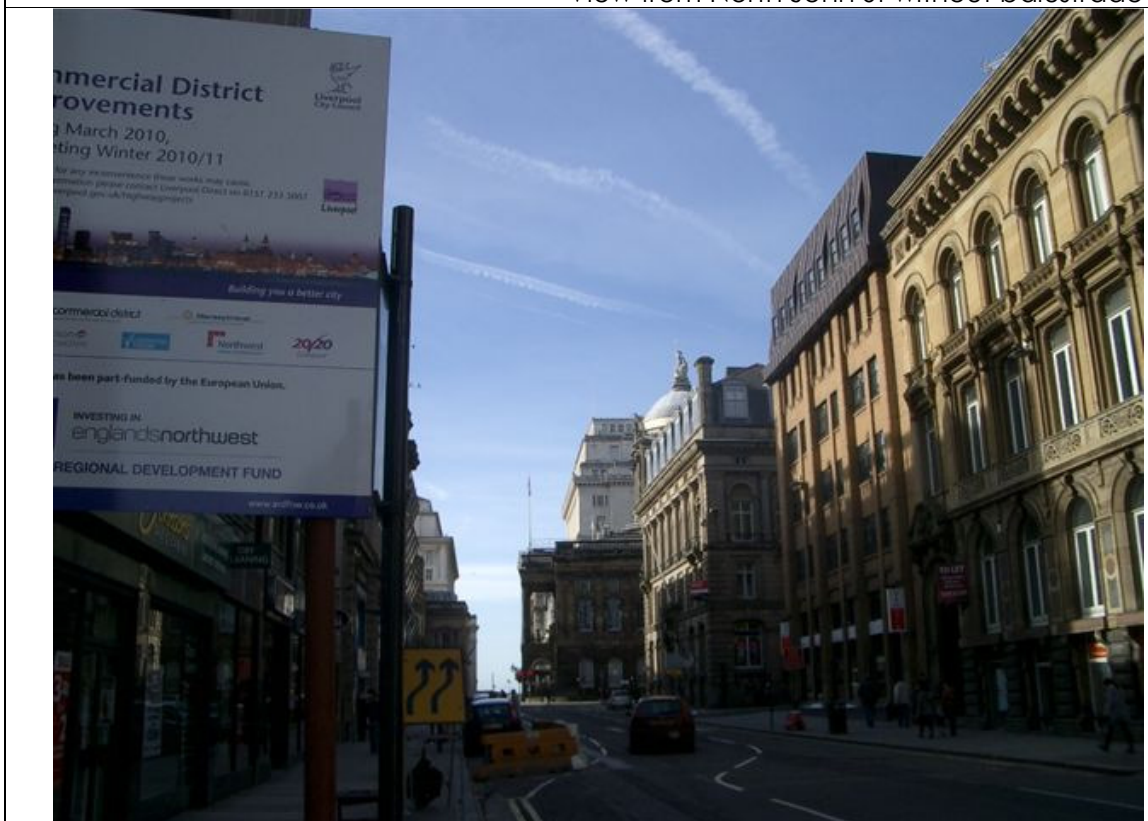
View from Dale St without balustrade



View from Dale St with balustrade



View from North John St without balustrade



View from North John St with balustrade



View from Temple Court without balustrade



View from Temple Court with balustrade



View from Moorfields without balustrade



View from Moorfields with balustrade



View from Stanley Street without balustrade



View from Stanley Street with balustrade



View from Exchange Flags without balustrade



View from Exchange Flags with balustrade



View from Monument without balustrade



View from Monument with balustrade



View from rear of town hall without balustrade



View from rear of town hall with balustrade



View from Fenwick St without balustrade



View from Fenwick St with balustrade



View from India Buildings without balustrade



View from India Buildings with balustrade



View from Dury Lane House without balustrade



View from Dury Lane House with corner balustrade



View from Dury Lane House without balustrade



View from Dury Lane House with centre balustrade



View from junction of Water St and The Strand without balustrade



View from junction of Water St and The Strand with balustrade



View of building from The Strand



View of building from The Strand



View of Building from The Strand



View of building from The Strand



View from St Nicholas Place without balustrade



View from St Nicholas Place with balustrade



View from outside Crown plaza without balustrade



View from outside Crown plaza with balustrade



View from Georges Dock Gates



View from garden of St Nicholas Church



View from garden of St Nicholas Church



View from garden of St Nicholas Church



Mock up of corner balustrade



Mock up of corner balustrade



Mock up of corner balustrade



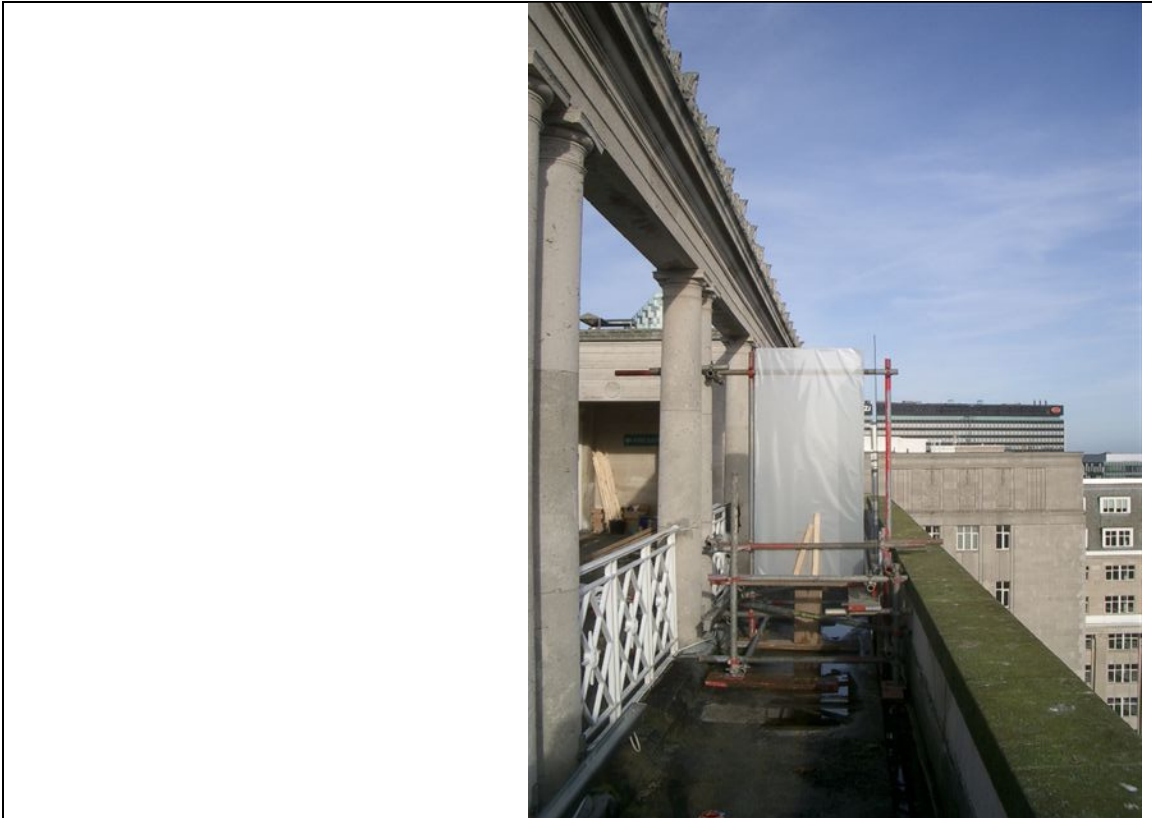
Supports to mock up of end panel and centre T panel balustrades



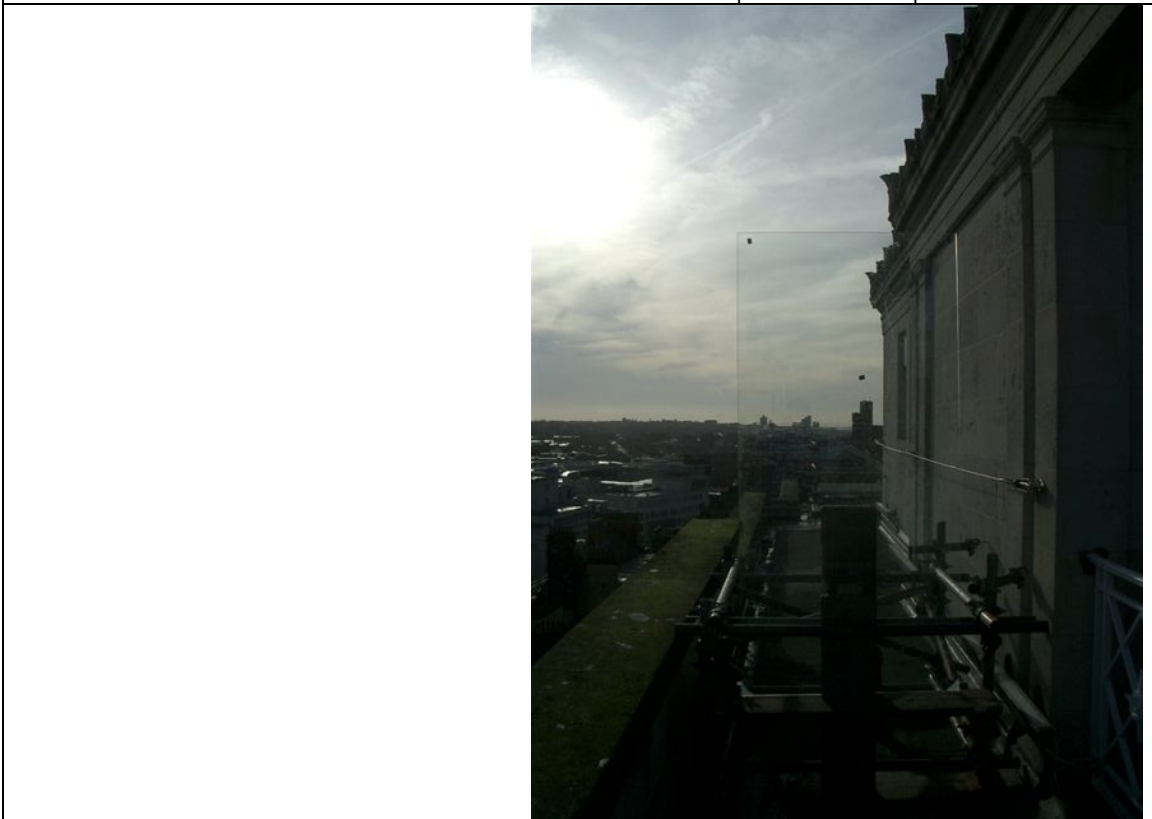
Mock up of centre T panel balustrade



Mock up of centre T panel balustrade



Mock up of centre T panel balustrade



Mock up of end panel balustrade

Martins Building

Planning Application Dec 2010

Supplementary Information

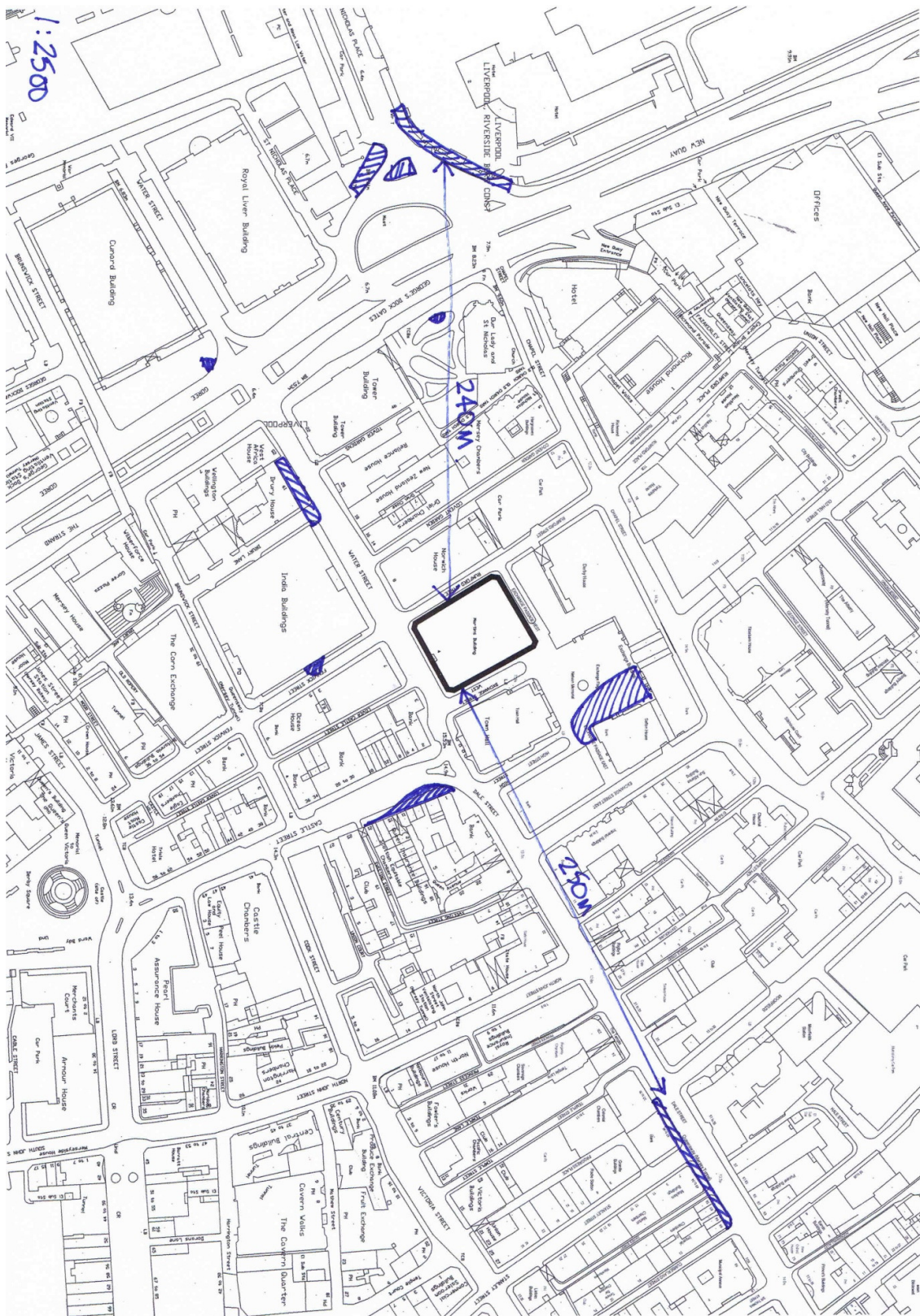
March 2011

Views of the building before and after
roof-top glass balustrades have been installed.

Dates photographs taken

Before: 27th January 2011

After: 24th February 2011



Map showing locations where loggias are visible



View from Castle Street / Sweeting St without balustrade



View from Castle Street / Sweeting St with balustrade



View from Castle Street without balustrade



View from Castle Street with centre and end panel balustrades



View from Castle Street with corner balustrade



View from Castle Street / Dale St without balustrade



View from Castle Street / Dale St with corner balustrade



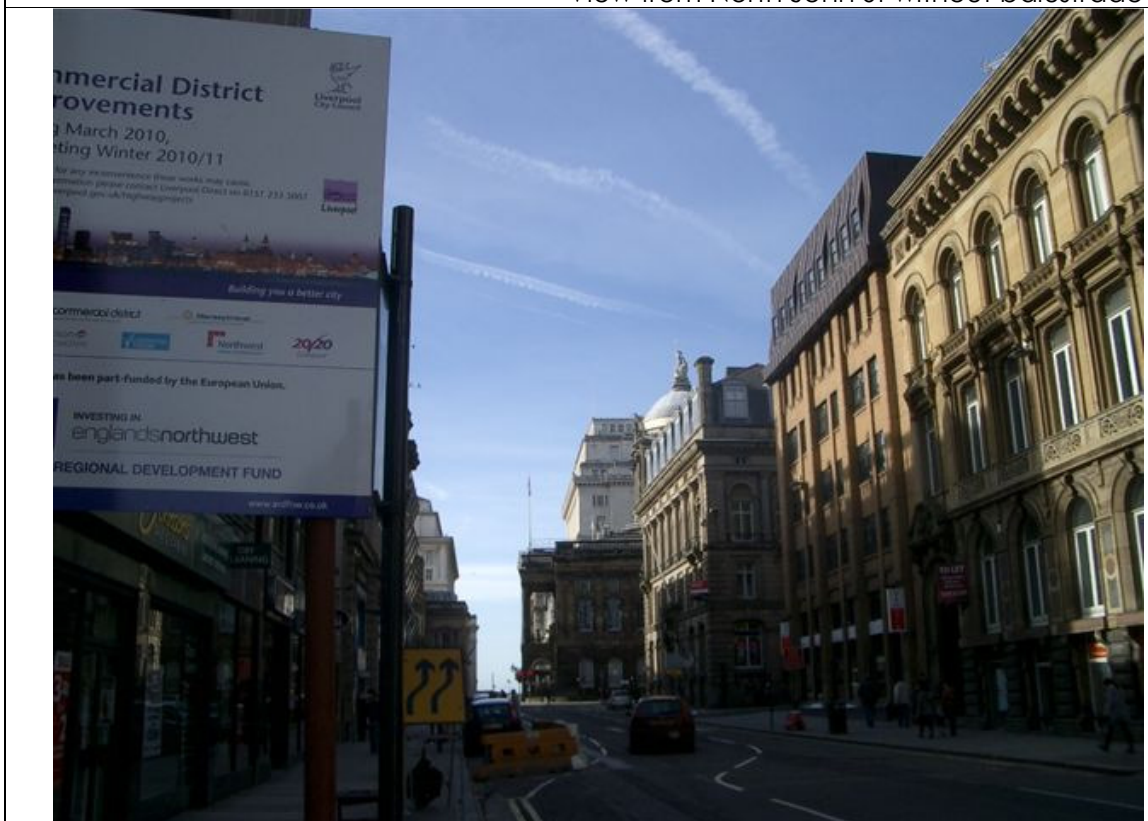
View from Dale St without balustrade



View from Dale St with balustrade



View from North John St without balustrade



View from North John St with balustrade



View from Temple Court without balustrade



View from Temple Court with balustrade



View from Moorfields without balustrade



View from Moorfields with balustrade



View from Stanley Street without balustrade



View from Stanley Street with balustrade



View from Exchange Flags without balustrade



View from Exchange Flags with balustrade



View from Monument without balustrade



View from Monument with balustrade



View from rear of town hall without balustrade



View from rear of town hall with balustrade



View from Fenwick St without balustrade



View from Fenwick St with balustrade



View from India Buildings without balustrade



View from India Buildings with balustrade



View from Dury Lane House without balustrade



View from Dury Lane House with corner balustrade



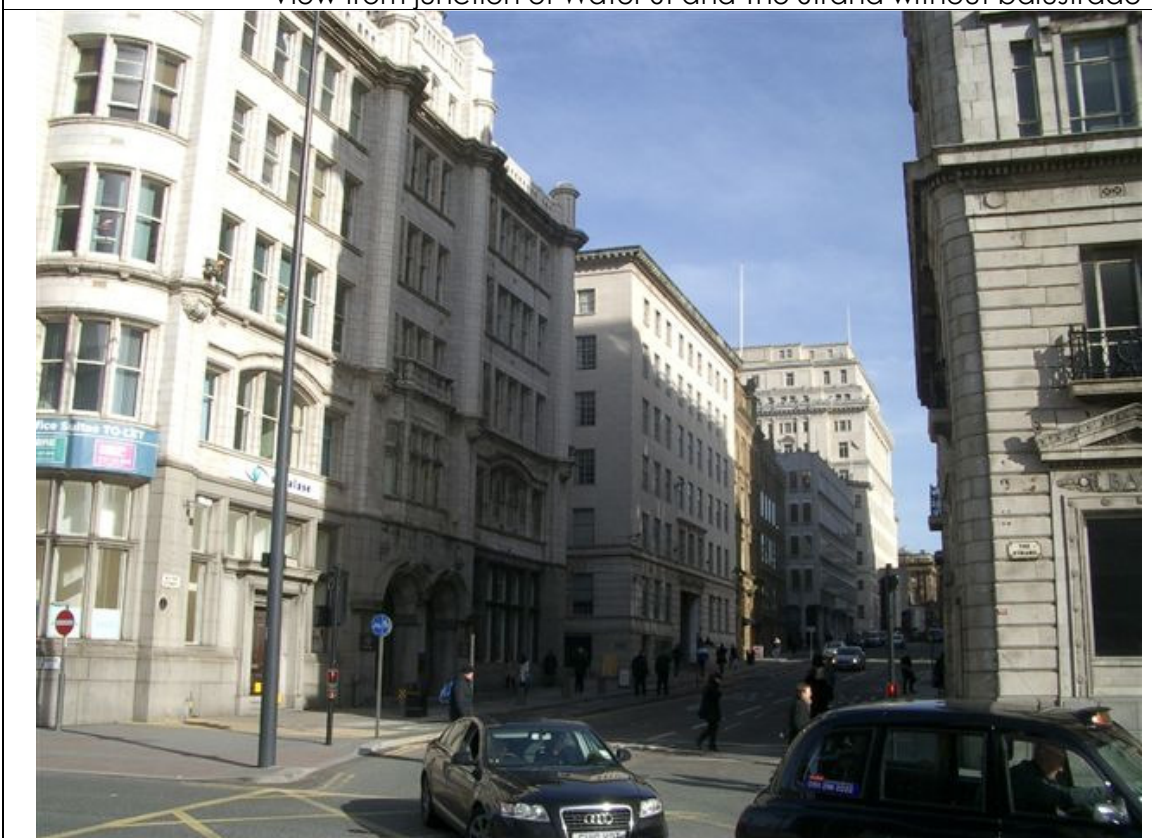
View from Dury Lane House without balustrade



View from Dury Lane House with centre balustrade



View from junction of Water St and The Strand without balustrade



View from junction of Water St and The Strand with balustrade



View of building from The Strand



View of building from The Strand



View of Building from The Strand



View of building from The Strand



View from St Nicholas Place without balustrade



View from St Nicholas Place with balustrade



View from outside Crown plaza without balustrade



View from outside Crown plaza with balustrade



View from Georges Dock Gates



View from garden of St Nicholas Church



View from garden of St Nicholas Church



View from garden of St Nicholas Church



Mock up of corner balustrade



Mock up of corner balustrade



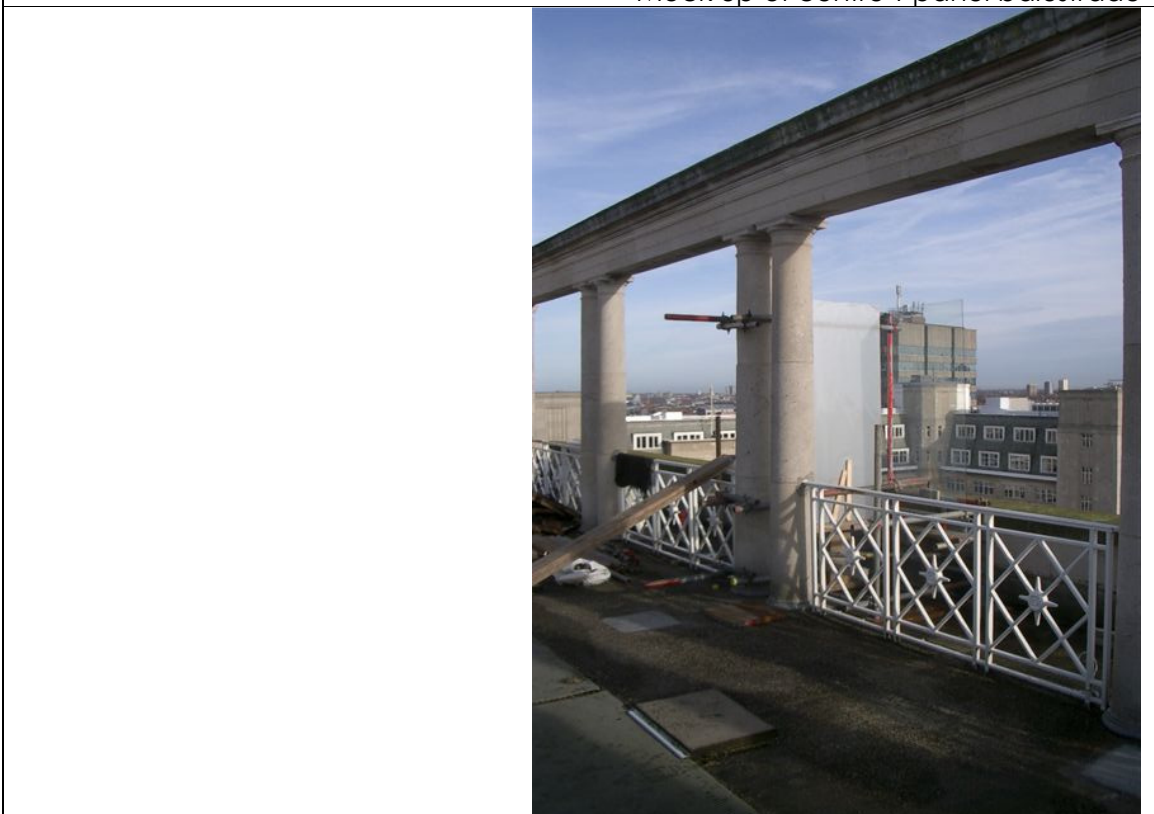
Mock up of corner balustrade



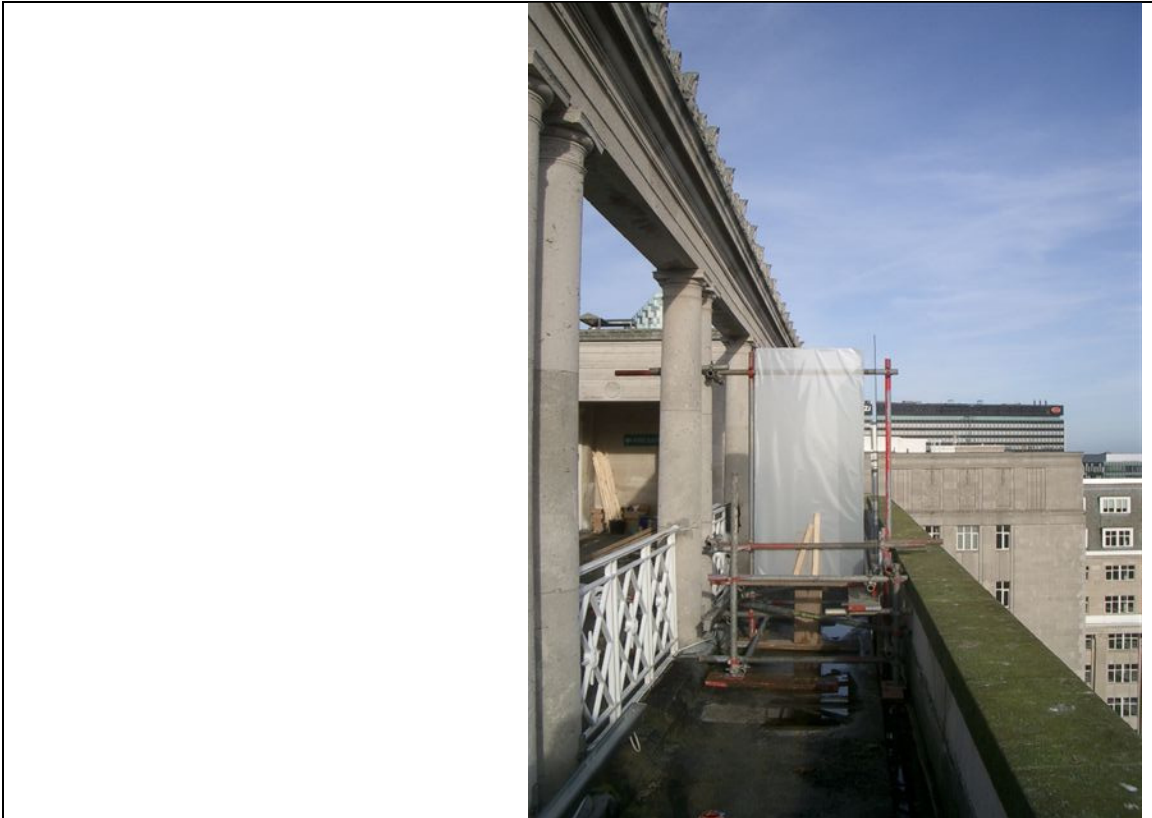
Supports to mock up of end panel and centre T panel balustrades



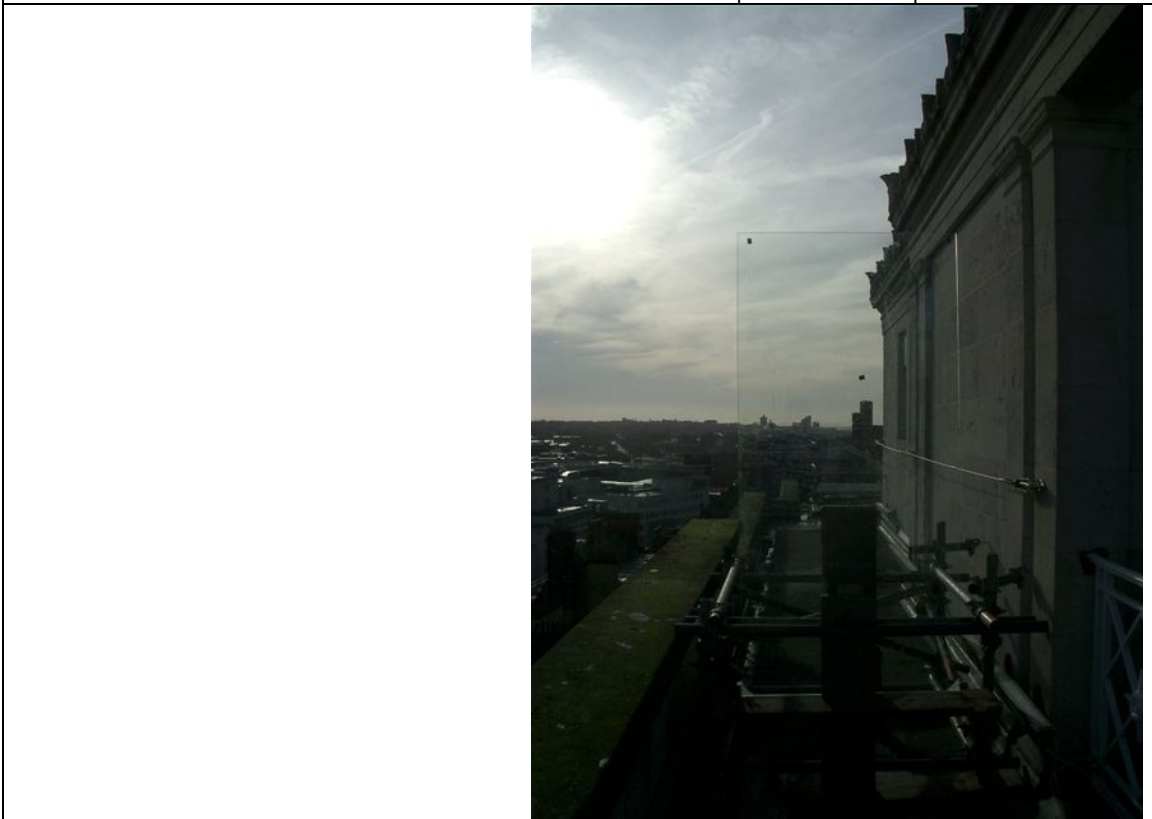
Mock up of centre T panel balustrade



Mock up of centre T panel balustrade



Mock up of centre T panel balustrade



Mock up of end panel balustrade

Martins Building

Planning Application Dec 2010

Supplementary Information

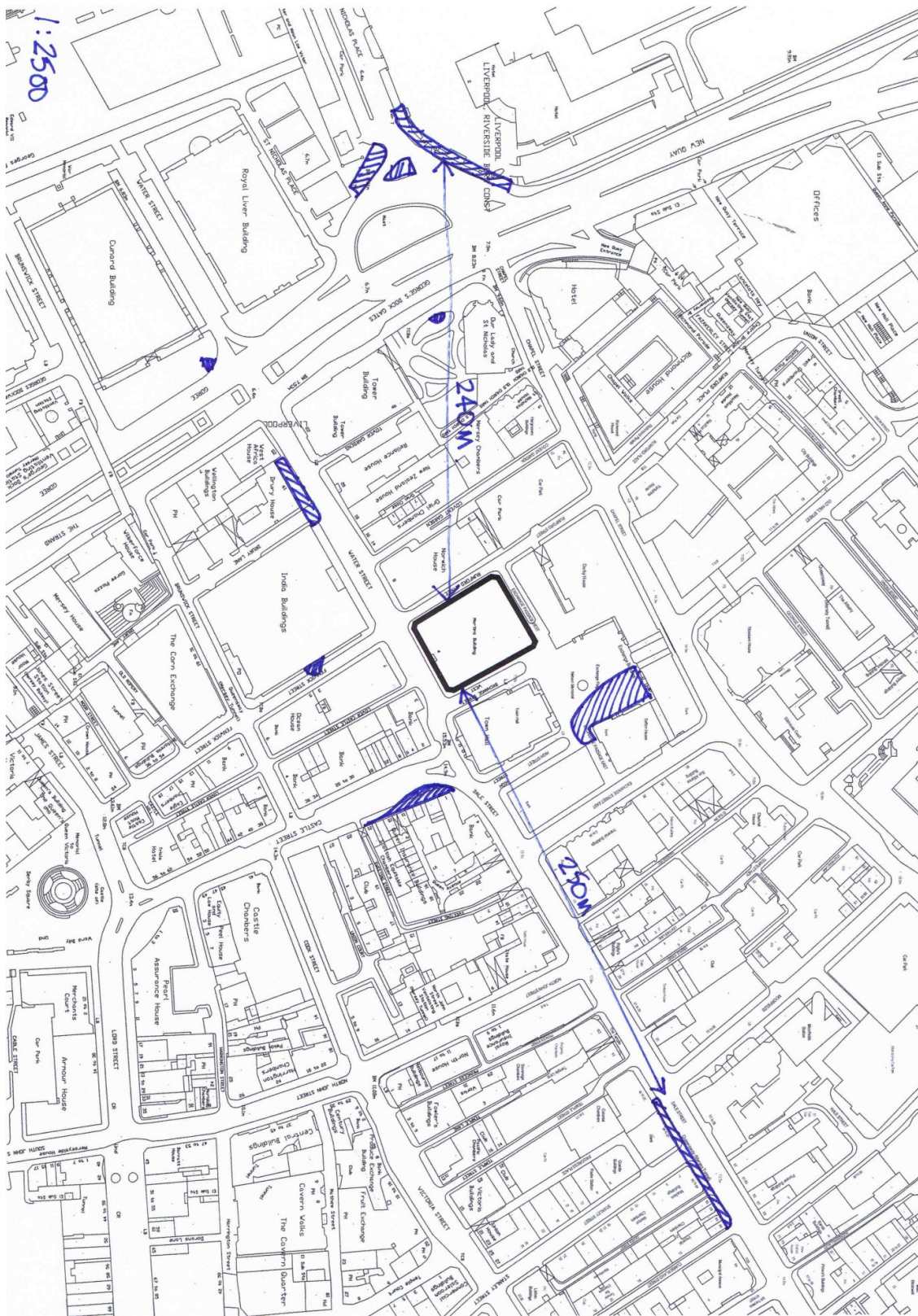
March 2011

Views of the building before and after
roof-top glass balustrades have been installed.

Dates photographs taken

Before: 27th January 2011

After: 24th February 2011



Map showing locations where loggias are visible



View from Castle Street / Sweeting St without balustrade



View from Castle Street / Sweeting St with balustrade



View from Castle Street without balustrade



View from Castle Street with centre and end panel balustrades



View from Castle Street with corner balustrade



View from Castle Street / Dale St without balustrade



View from Castle Street / Dale St with corner balustrade



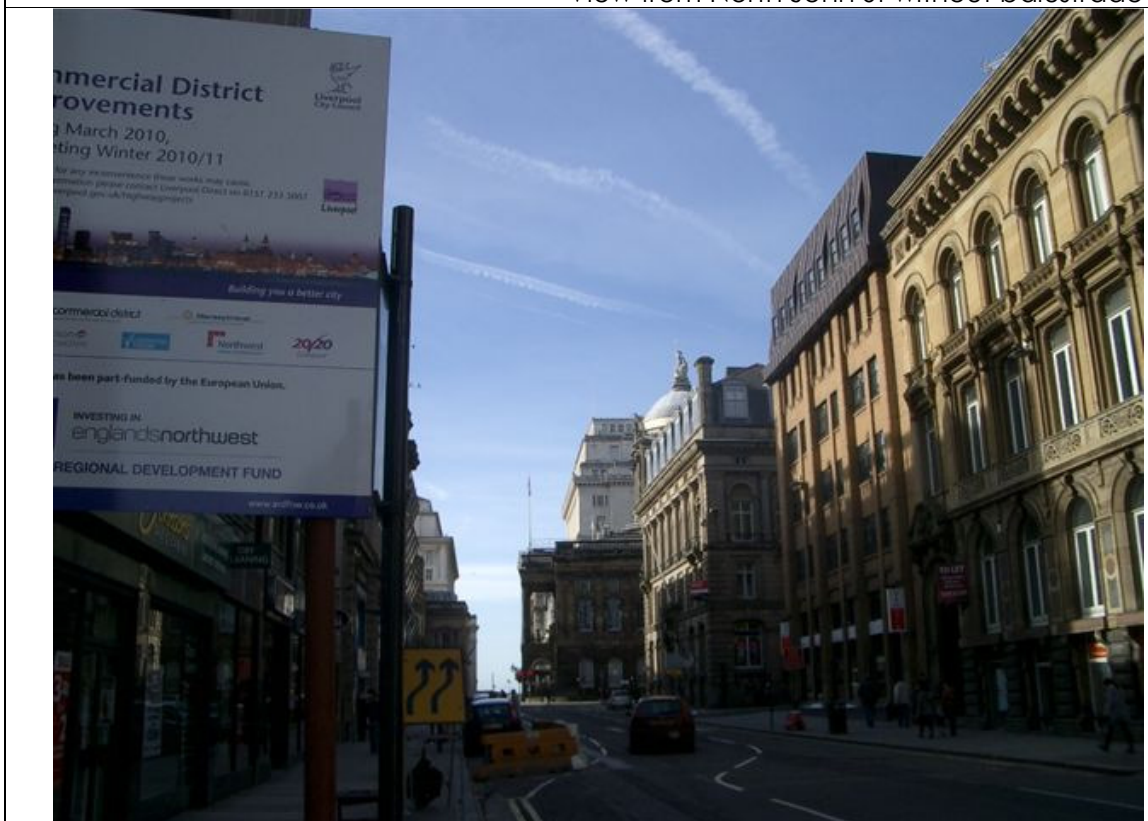
View from Dale St without balustrade



View from Dale St with balustrade



View from North John St without balustrade



View from North John St with balustrade



View from Temple Court without balustrade



View from Temple Court with balustrade



View from Moorfields without balustrade



View from Moorfields with balustrade



View from Stanley Street without balustrade



View from Stanley Street with balustrade



View from Exchange Flags without balustrade



View from Exchange Flags with balustrade



View from Monument without balustrade



View from Monument with balustrade



View from rear of town hall without balustrade



View from rear of town hall with balustrade



View from Fenwick St without balustrade



View from Fenwick St with balustrade



View from India Buildings without balustrade



View from India Buildings with balustrade



View from Dury Lane House without balustrade



View from Dury Lane House with corner balustrade



View from Dury Lane House without balustrade



View from Dury Lane House with centre balustrade



View from junction of Water St and The Strand without balustrade



View from junction of Water St and The Strand with balustrade



View of building from The Strand



View of building from The Strand



View of Building from The Strand



View of building from The Strand



View from St Nicholas Place without balustrade



View from St Nicholas Place with balustrade



View from outside Crown plaza without balustrade



View from outside Crown plaza with balustrade



View from Georges Dock Gates



View from garden of St Nicholas Church



View from garden of St Nicholas Church



View from garden of St Nicholas Church



Mock up of corner balustrade



Mock up of corner balustrade



Mock up of corner balustrade



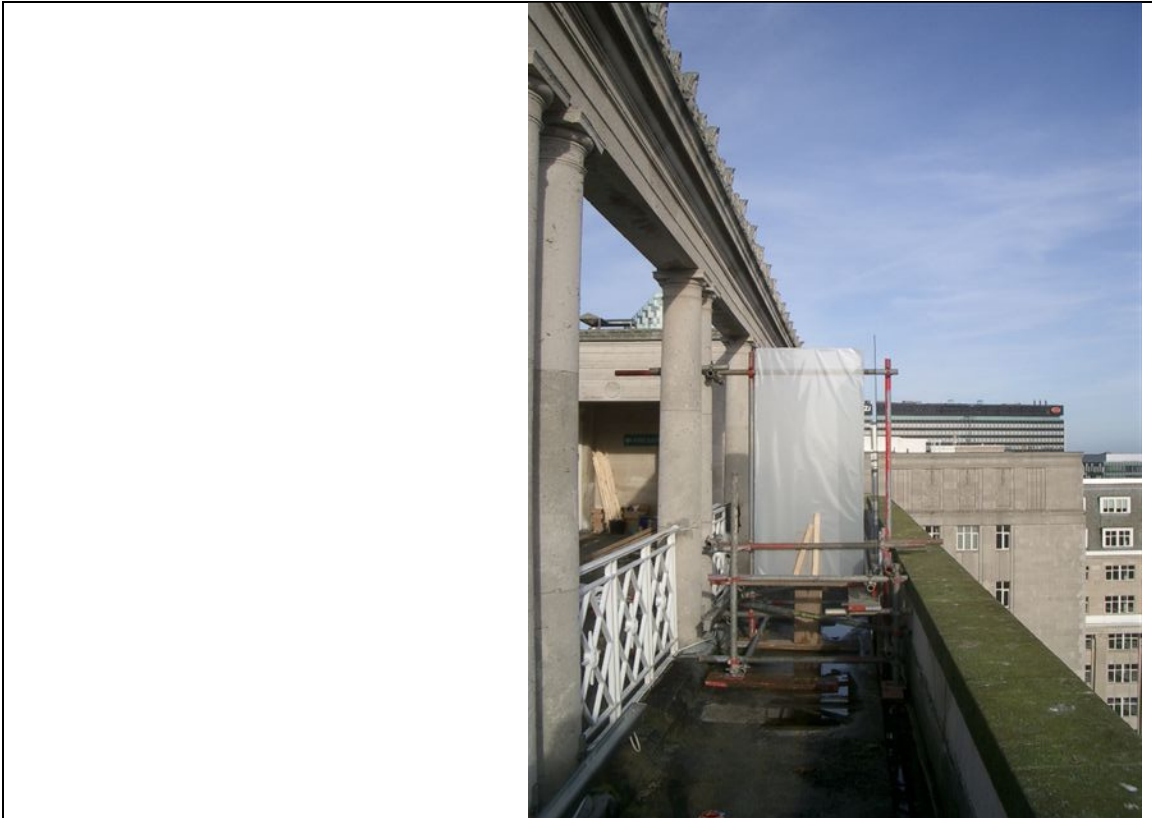
Supports to mock up of end panel and centre T panel balustrades



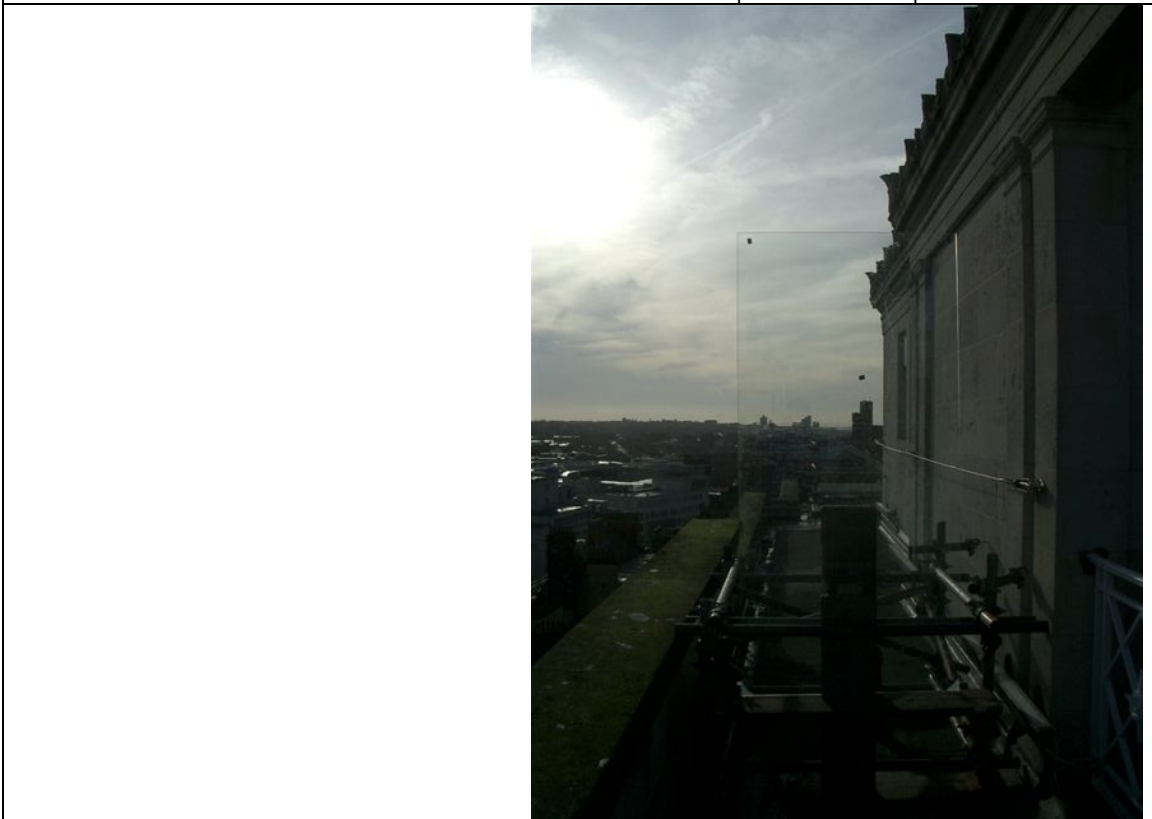
Mock up of centre T panel balustrade



Mock up of centre T panel balustrade



Mock up of centre T panel balustrade



Mock up of end panel balustrade

Martins Building

Planning Application Dec 2010

Supplementary Information

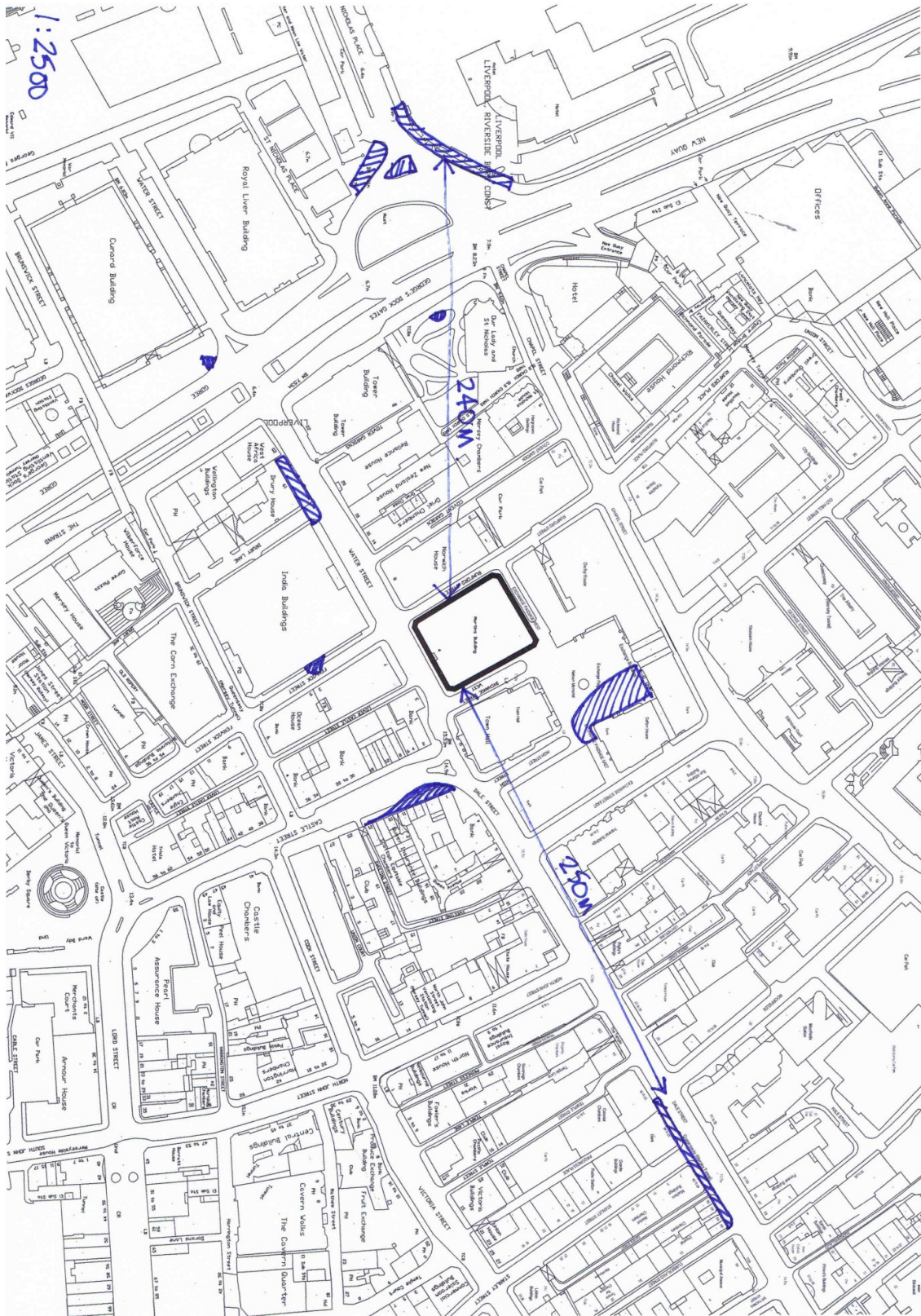
March 2011

Views of the building before and after
roof-top glass balustrades have been installed.

Dates photographs taken

Before: 27th January 2011

After: 24th February 2011





View from Castle Street / Sweeting St without balustrade



View from Castle Street / Sweeting St with balustrade



View from Castle Street without balustrade



View from Castle Street with centre and end panel balustrades



View from Castle Street with corner balustrade



View from Castle Street / Dale St without balustrade



View from Castle Street / Dale St with corner balustrade



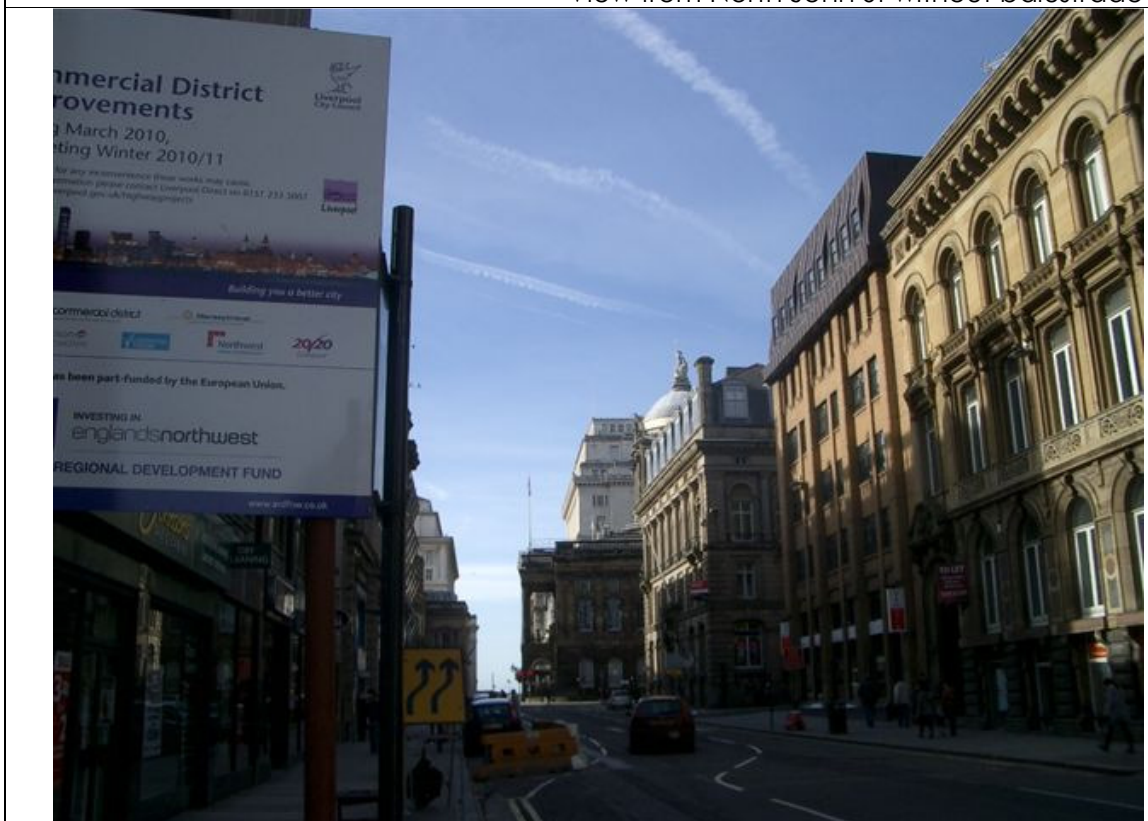
View from Dale St without balustrade



View from Dale St with balustrade



View from North John St without balustrade



View from North John St with balustrade



View from Temple Court without balustrade



View from Temple Court with balustrade



View from Moorfields without balustrade



View from Moorfields with balustrade



View from Stanley Street without balustrade



View from Stanley Street with balustrade



View from Exchange Flags without balustrade



View from Exchange Flags with balustrade



View from Monument without balustrade



View from Monument with balustrade



View from rear of town hall without balustrade



View from rear of town hall with balustrade



View from Fenwick St without balustrade



View from Fenwick St with balustrade



View from India Buildings without balustrade



View from India Buildings with balustrade



View from Dury Lane House without balustrade



View from Dury Lane House with corner balustrade



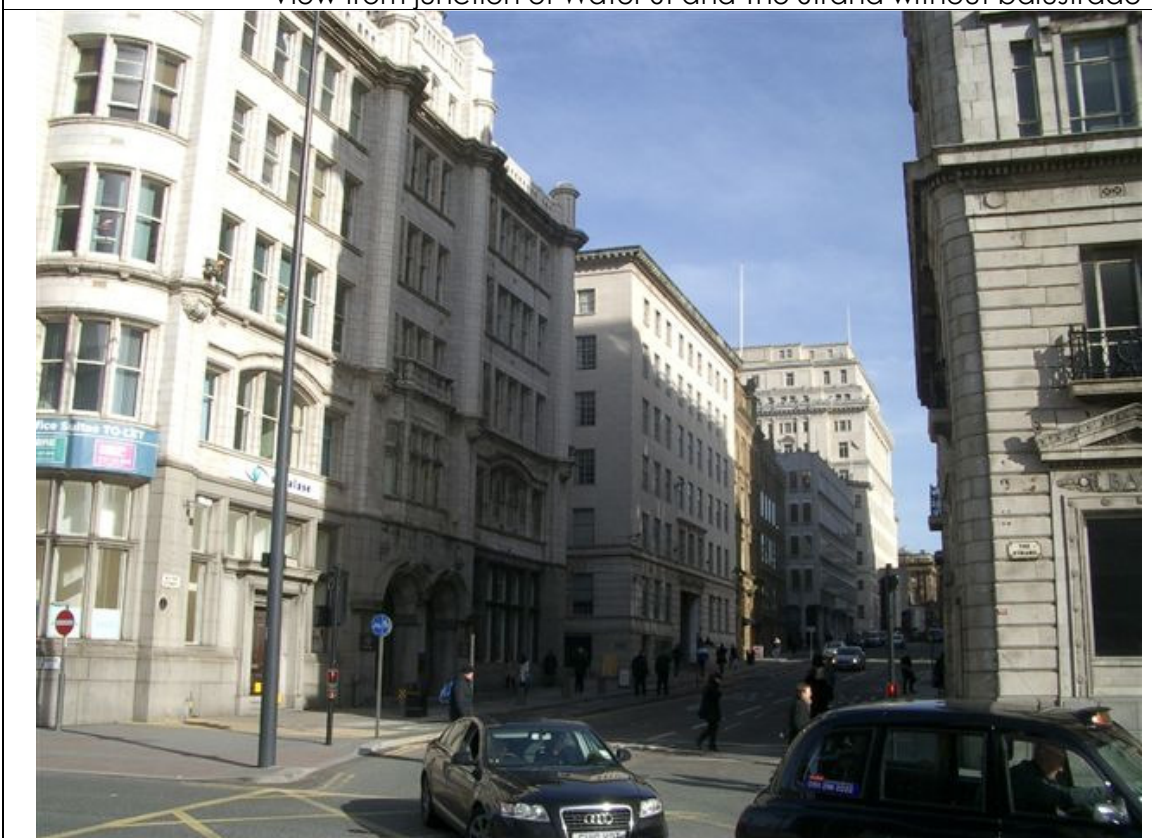
View from Dury Lane House without balustrade



View from Dury Lane House with centre balustrade



View from junction of Water St and The Strand without balustrade



View from junction of Water St and The Strand with balustrade



View of building from The Strand



View of building from The Strand



View of Building from The Strand



View of building from The Strand



View from St Nicholas Place without balustrade



View from St Nicholas Place with balustrade



View from outside Crown plaza without balustrade



View from outside Crown plaza with balustrade



View from Georges Dock Gates



View from garden of St Nicholas Church



View from garden of St Nicholas Church



View from garden of St Nicholas Church



Mock up of corner balustrade



Mock up of corner balustrade



Mock up of corner balustrade



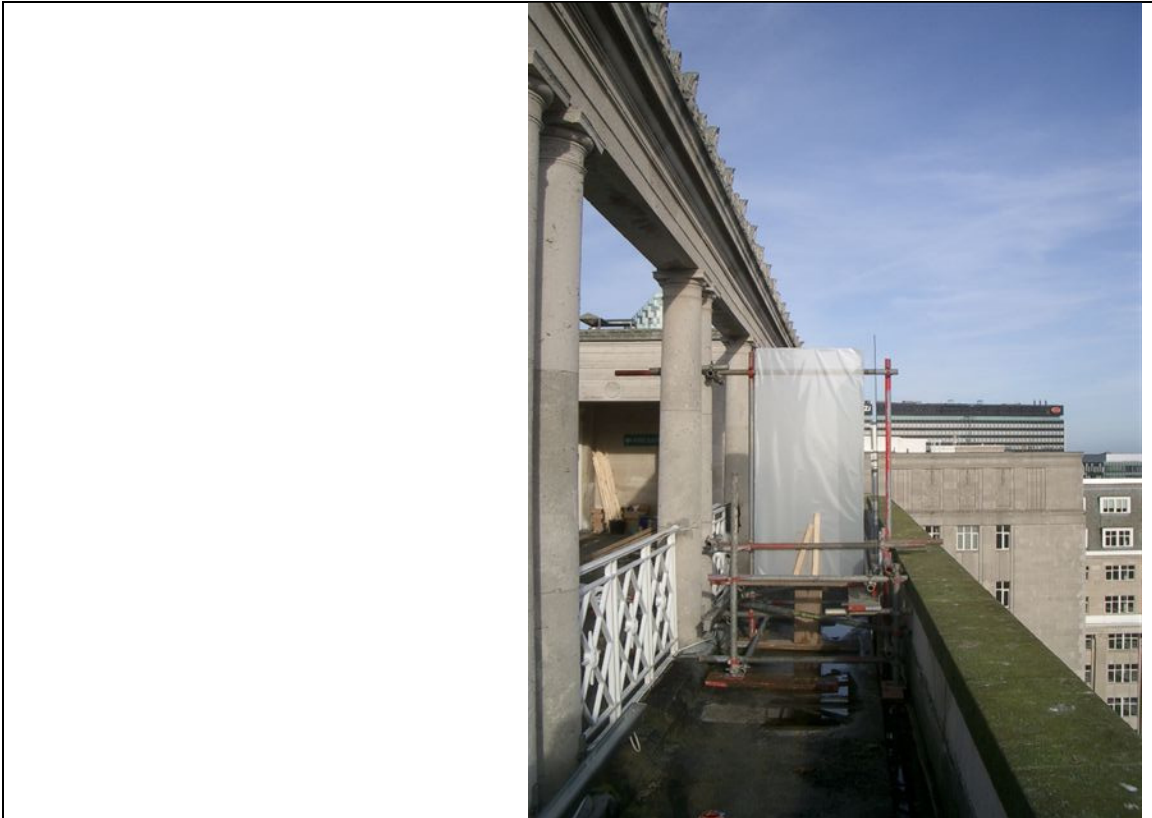
Supports to mock up of end panel and centre T panel balustrades



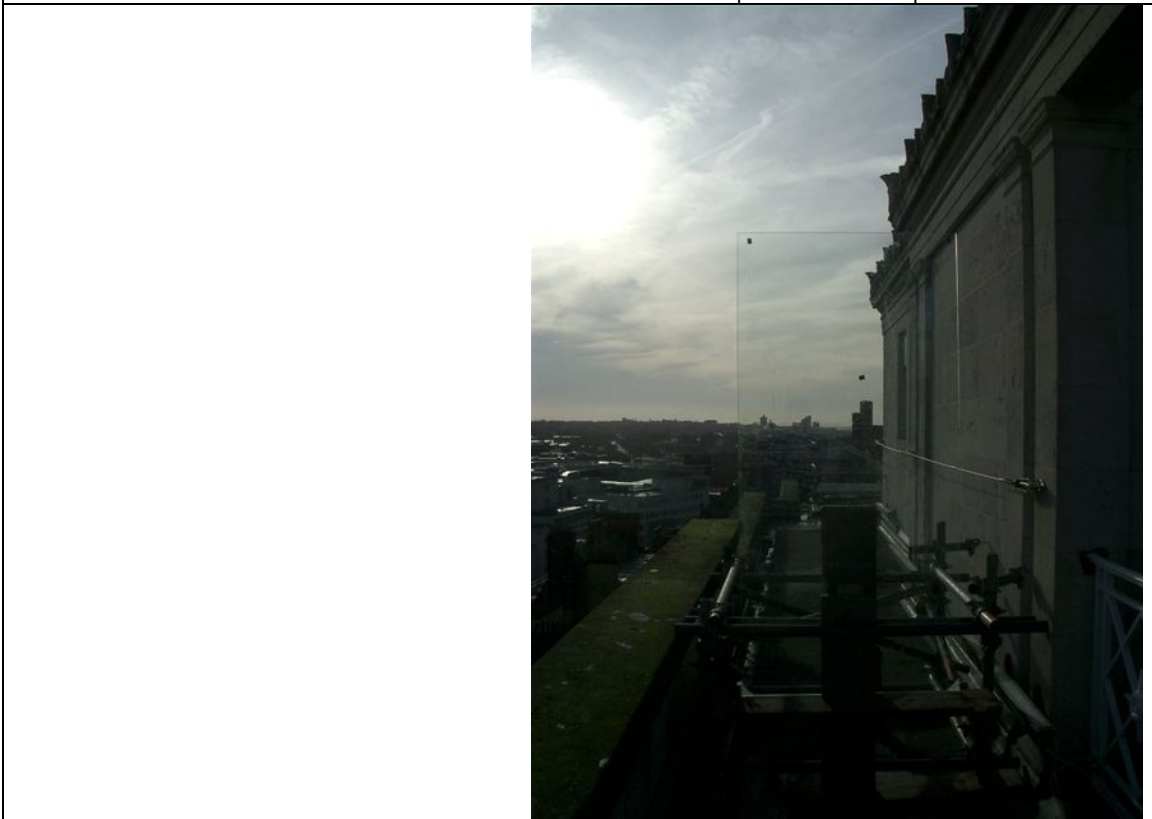
Mock up of centre T panel balustrade



Mock up of centre T panel balustrade



Mock up of centre T panel balustrade



Mock up of end panel balustrade

Martins Building

Planning Application Dec 2010

Supplementary Information

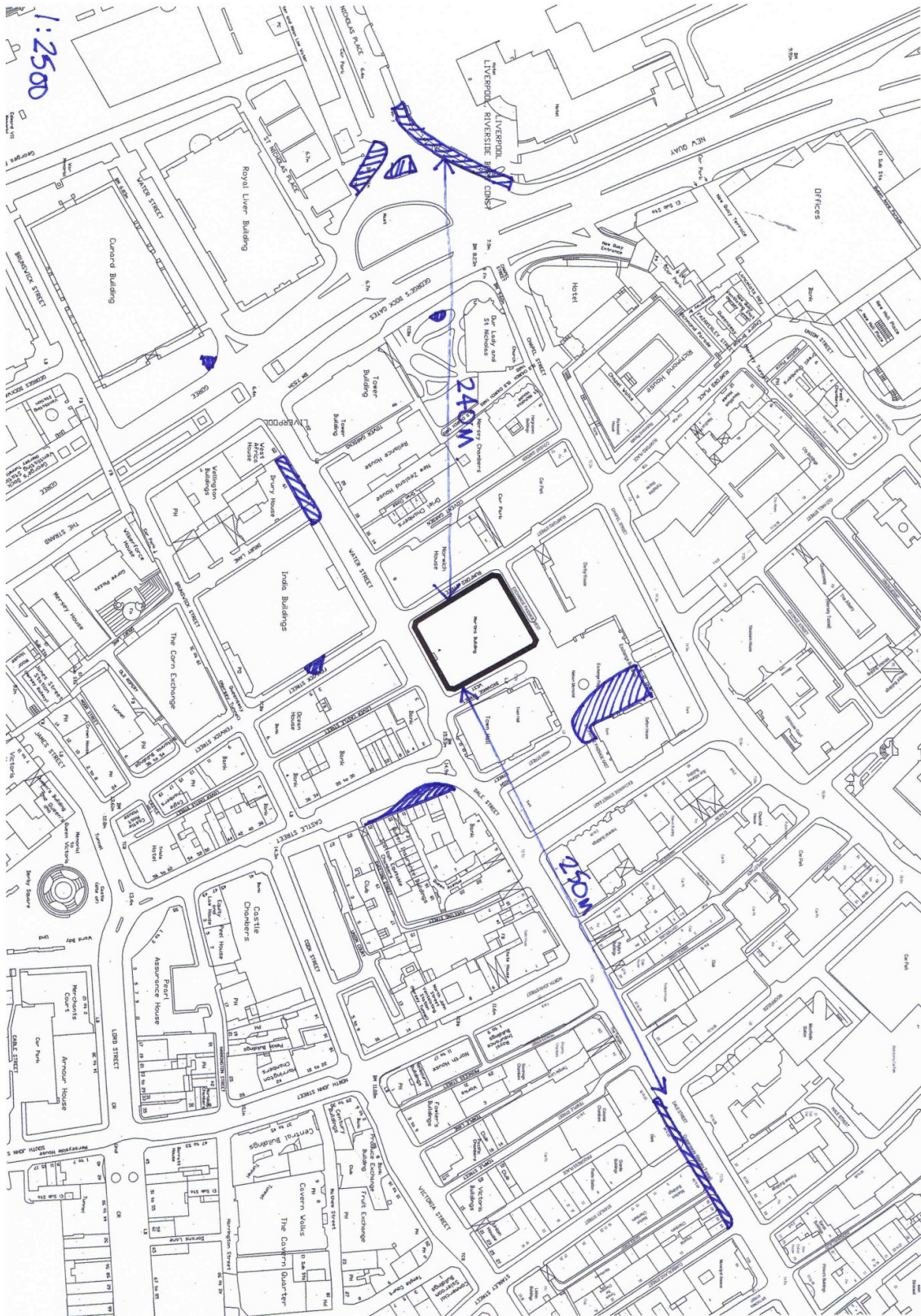
March 2011

Views of the building before and after
roof-top glass balustrades have been installed.

Dates photographs taken

Before: 27th January 2011

After: 24th February 2011



Map showing locations where loggias are visible



View from Castle Street / Sweeting St without balustrade



View from Castle Street / Sweeting St with balustrade



View from Castle Street without balustrade



View from Castle Street with centre and end panel balustrades



View from Castle Street with corner balustrade



View from Castle Street / Dale St without balustrade



View from Castle Street / Dale St with corner balustrade



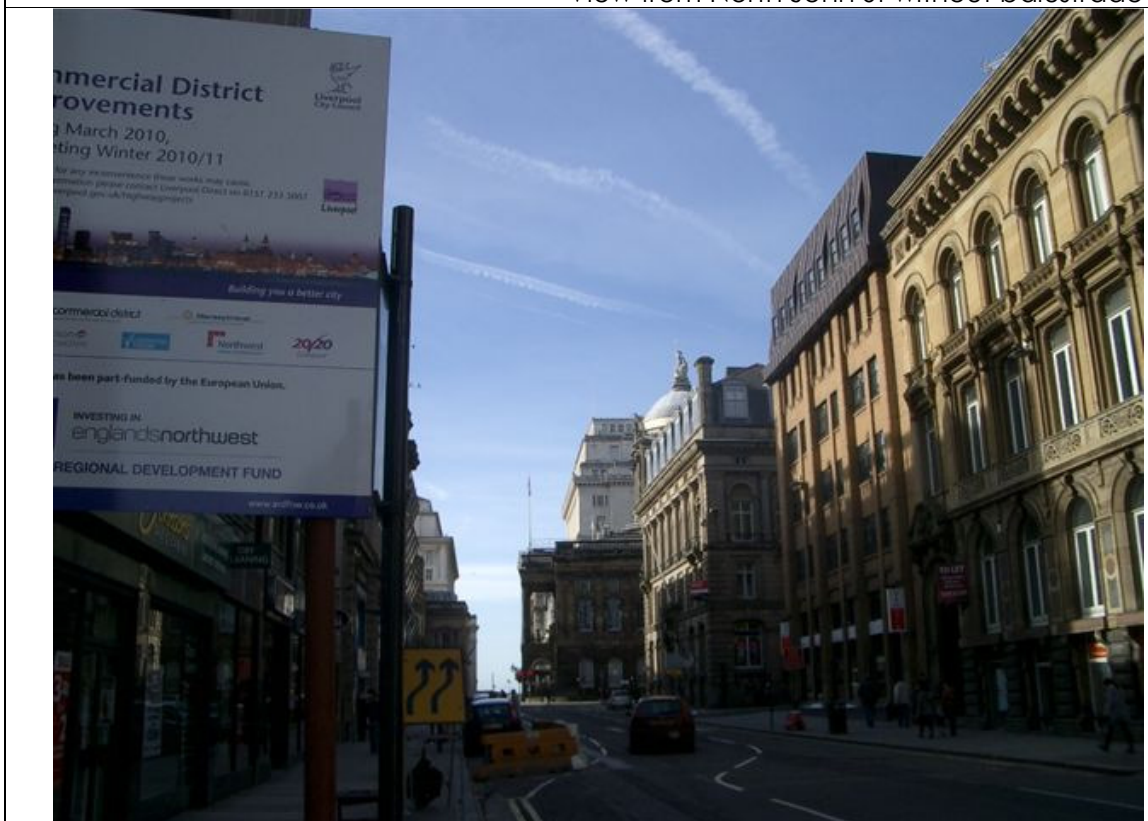
View from Dale St without balustrade



View from Dale St with balustrade



View from North John St without balustrade



View from North John St with balustrade



View from Temple Court without balustrade



View from Temple Court with balustrade



View from Moorfields without balustrade



View from Moorfields with balustrade



View from Stanley Street without balustrade



View from Stanley Street with balustrade



View from Exchange Flags without balustrade



View from Exchange Flags with balustrade



View from Monument without balustrade



View from Monument with balustrade



View from rear of town hall without balustrade



View from rear of town hall with balustrade



View from Fenwick St without balustrade



View from Fenwick St with balustrade



View from India Buildings without balustrade



View from India Buildings with balustrade



View from Dury Lane House without balustrade



View from Dury Lane House with corner balustrade



View from Dury Lane House without balustrade



View from Dury Lane House with centre balustrade



View from junction of Water St and The Strand without balustrade



View from junction of Water St and The Strand with balustrade



View of building from The Strand



View of building from The Strand



View of Building from The Strand



View of building from The Strand



View from St Nicholas Place without balustrade



View from St Nicholas Place with balustrade



View from outside Crown plaza without balustrade



View from outside Crown plaza with balustrade



View from Georges Dock Gates



View from garden of St Nicholas Church



View from garden of St Nicholas Church



View from garden of St Nicholas Church



Mock up of corner balustrade



Mock up of corner balustrade



Mock up of corner balustrade



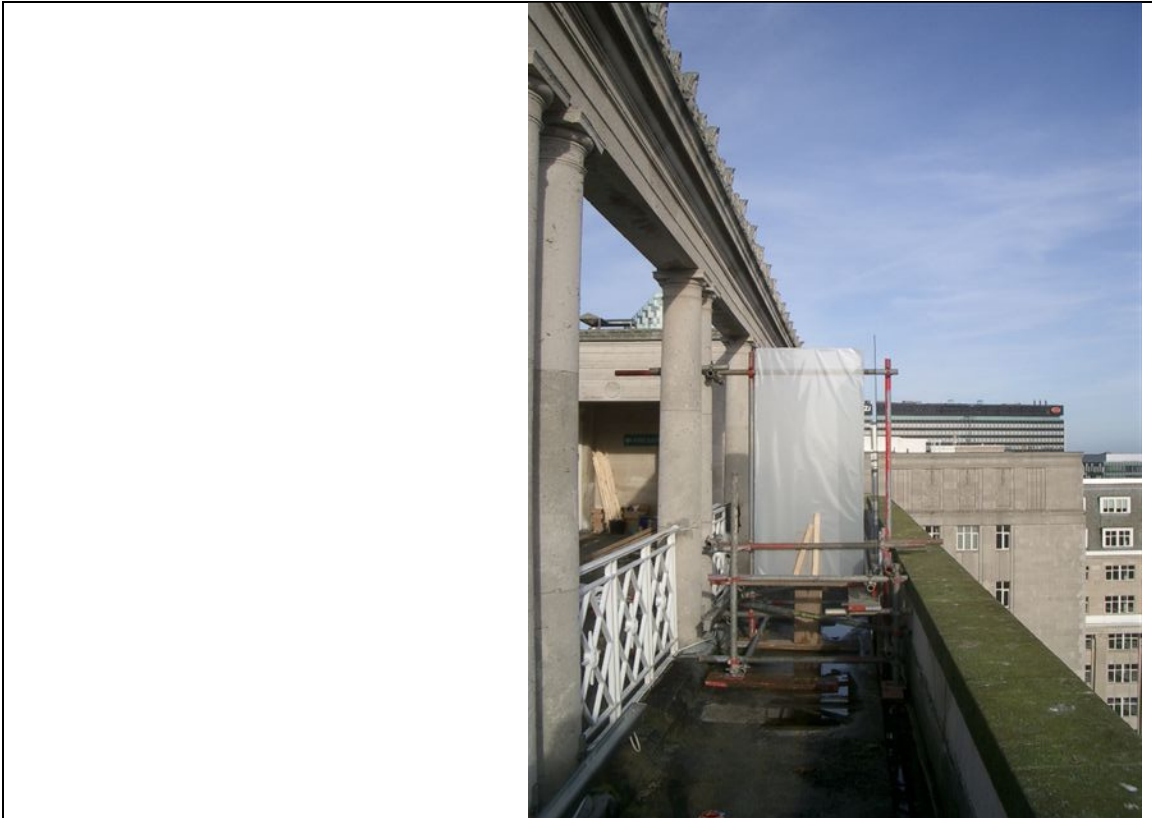
Supports to mock up of end panel and centre T panel balustrades



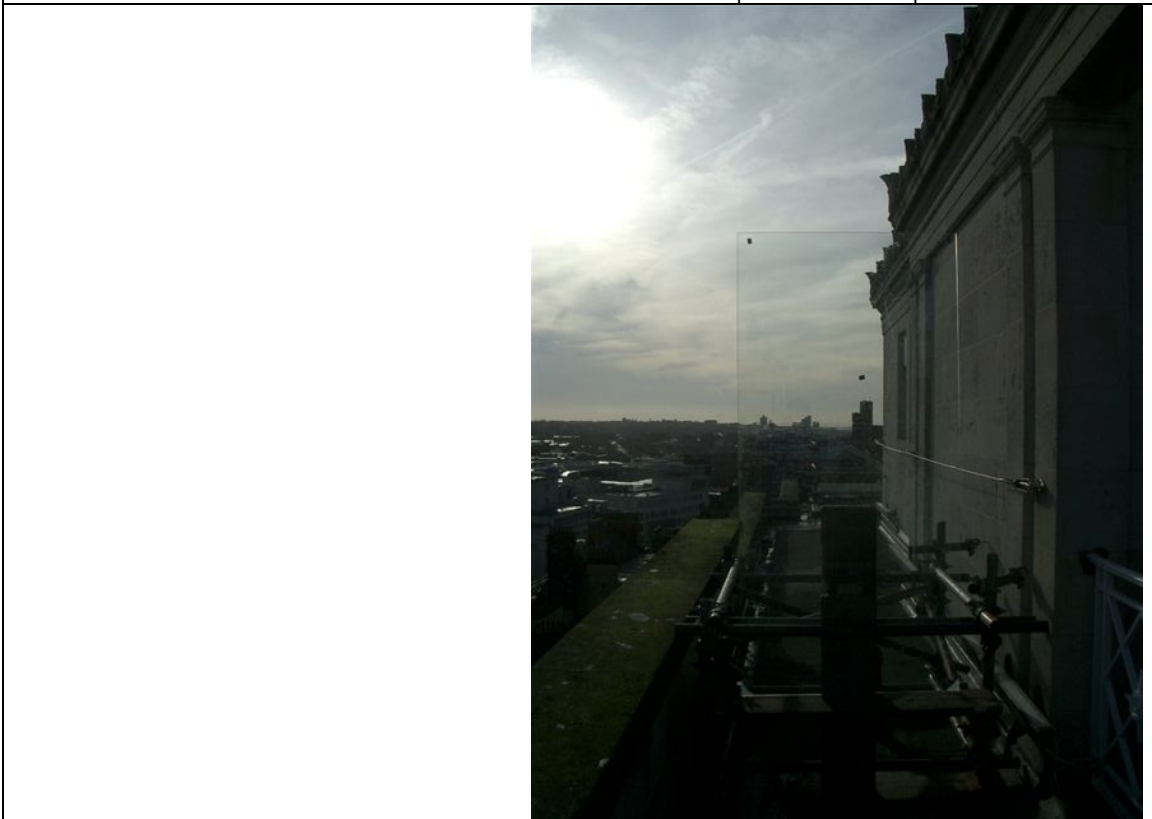
Mock up of centre T panel balustrade



Mock up of centre T panel balustrade



Mock up of centre T panel balustrade



Mock up of end panel balustrade