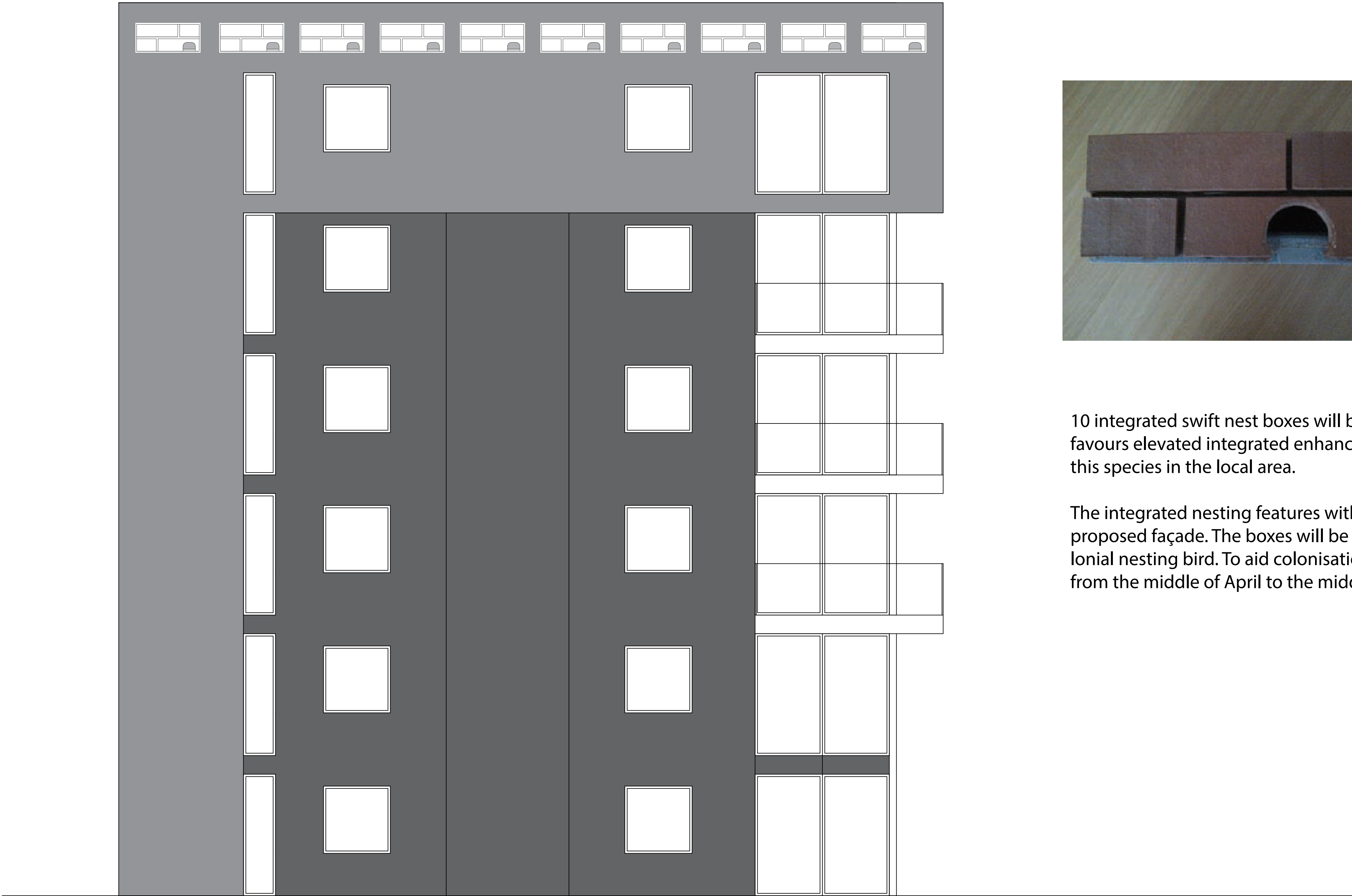


10 no. Integrated Swift Box (Ecosurv or integrated equivalent)



10 integrated swift nest boxes will be provided as part of the development as the proposed development favours elevated integrated enhancements and the local record centre have provided historic records for this species in the local area.

The integrated nesting features within the development will be installed at roof level integrated into the proposed façade. The boxes will be provided together to encourage establishment of Swifts which are a colonial nesting bird. To aid colonisation, calls of the common Swift should be played from the nesting site from the middle of April to the middle of May when Swifts arrive in the UK.