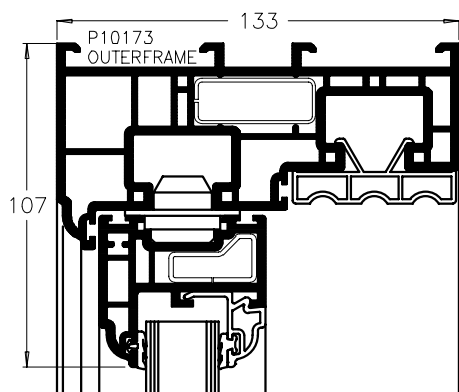
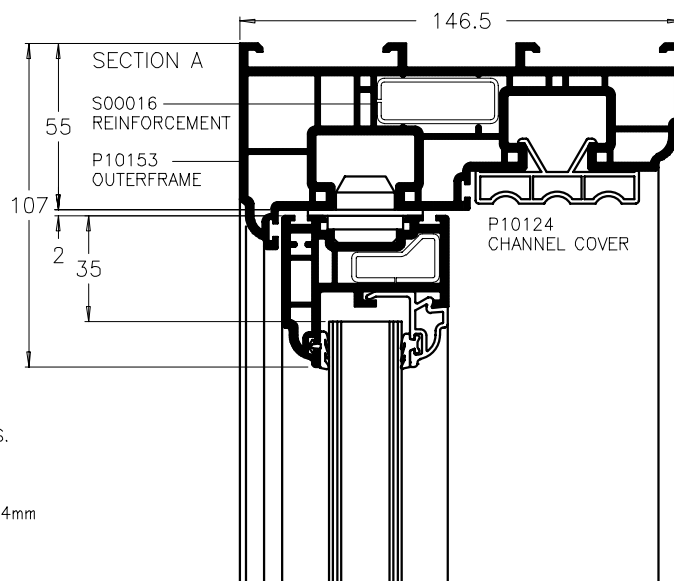


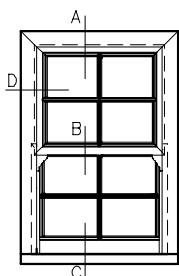
VERTICAL SLIDING WINDOW SMALL AND LARGE SASH EQUAL SPLIT



SECTION A



SECTION A



TO CALCULATE FINISHED SASH HEIGHTS.
TOP & BOTTOM SASH HEIGHT =

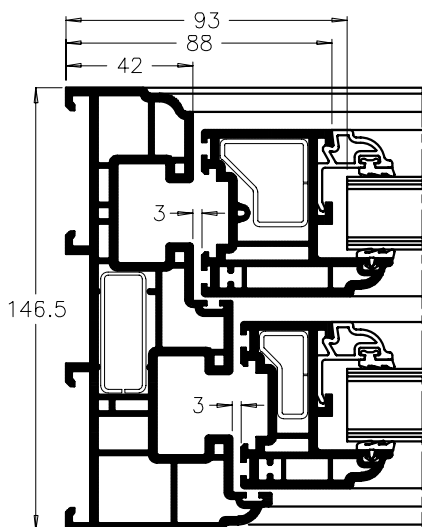
$$\frac{\text{OVERALL FRAME HEIGHT} - 97\text{mm}}{2} + 24\text{mm}$$

TO CALCULATE FINISHED SASH WIDTHS.
TOP SASH WIDTH =

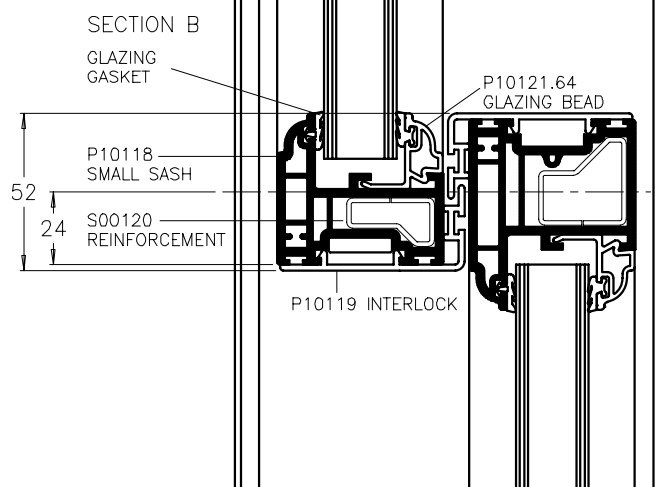
$$\text{OVERALL FRAME WIDTH} - 116\text{mm}$$

BOTTOM SASH WIDTH =

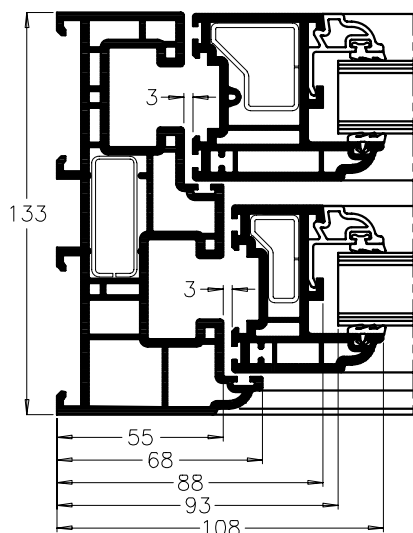
$$\text{OVERALL FRAME WIDTH} - 90\text{mm}$$



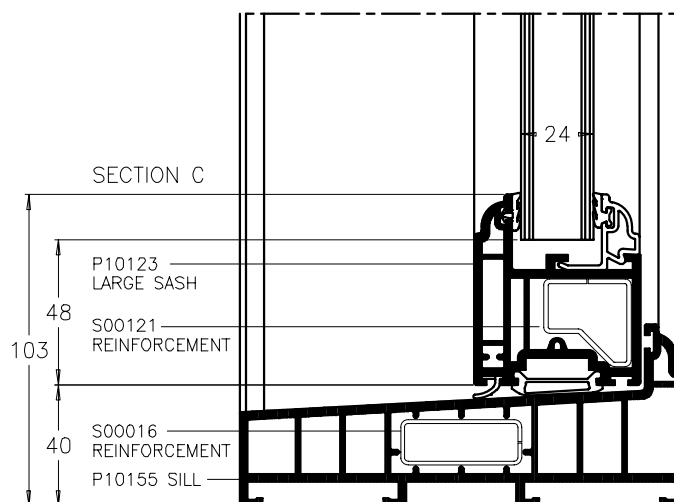
SECTION D
P10153
OUTERFRAME



SECTION B



SECTION D
P10173
OUTERFRAME



SECTION C