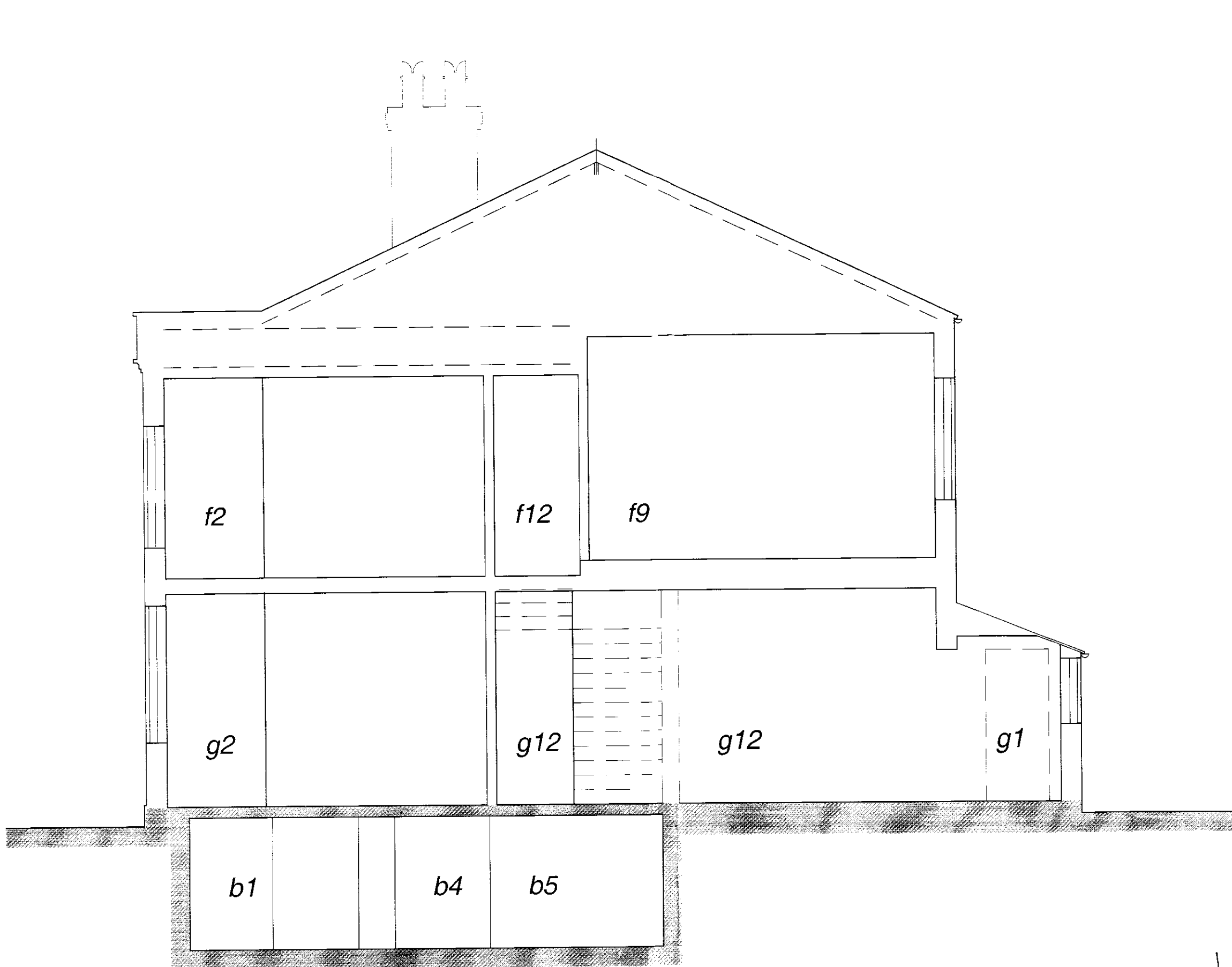
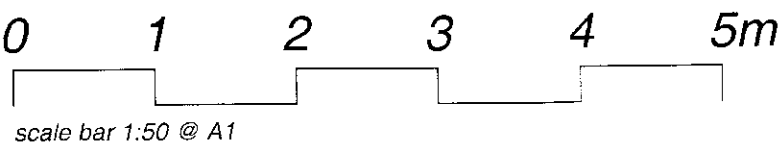


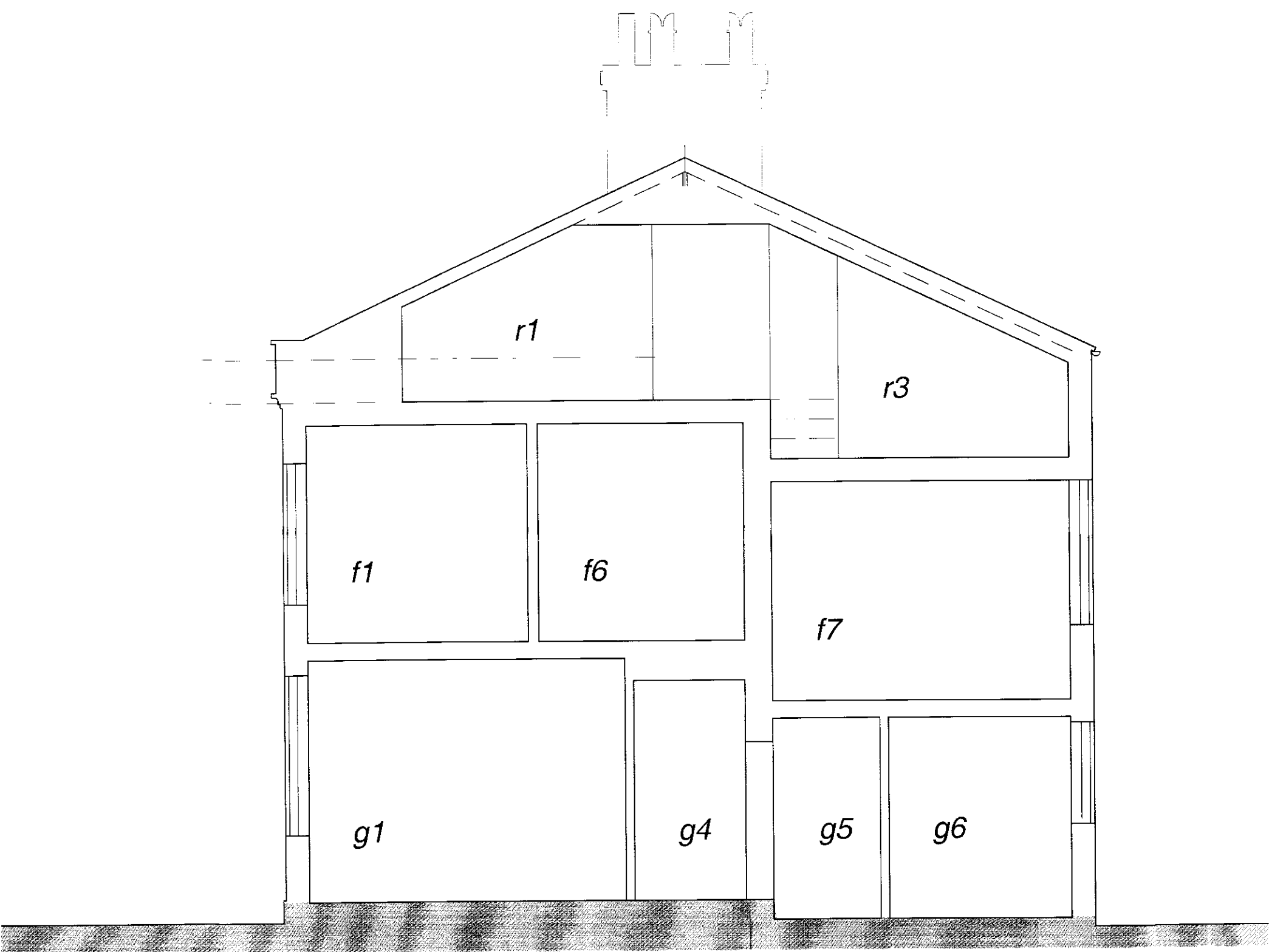
rice house st vincent's school liverpool

This drawing to be read in conjunction with Floor Plans/Elevations



section a - a

16.6 | 0579
26/2/16



section b - b

St Vincent's School Liverpool

Sections as Existing
A - A and B - B

Drwg No: WA 42 - 03 Rev: -
Date: June 2014 Scale: 1:50 @ A1 Checked by: jg

williams architecture
106 Timber Wharf Worsley Street Manchester M15 4LR