



MASTER MHN-FC

MASTER MHN-FC 2000W/740 400V XW UNP

Compact quartz metal halide lamps with double pinch

Product data

• General Characteristics

Cap-Base	Double Ended
Cap-Base Information	Cable
Bulb Finish	Clear
Burning Position	p5 [Parallel +/-5D or Horizontal(HOR)]
Life to 5% failures	7000 hr
Life to 10% failures	8000 hr
Life to 20% failures	9500 hr
Life to 50% failures	14000 hr

• Light Technical Characteristics

Colour Code	740 [CCT of 4000K]
Colour Rendering Index	56 (min), 62 (nom) Ra8
Colour Designation	White
Colour Temperature	4200 K
Colour Temperature Technical	4200 K
Chromaticity Coordinate X	380 -
Chromaticity Coordinate Y	419 -
Lamp Luminous Flux EM	210000 Lm
Lamp Luminous Efficacy EM	102 Lm/W
Lumen Maintenance 2000h	85 %
Lumen Maintenance 5000h	75 %
Lumen Maintenance 10000h	70 %
Average Luminance EM	1500 cd/cm2

Lumen Maintenance 1000h	90 %
Lumen Maintenance 14000h	45 %

• Electrical Characteristics

Lamp Wattage	2000 W
Lamp Wattage EM	2032 W
Voltage	400 V
Lamp Voltage	222 V
Lamp Current EM	10.11 A
Dimmable	no

• Environmental Characteristics

Mercury (Hg) Content	105 mg
----------------------	--------

• UV-related Characteristics

PET (NIOSH)	0.030 h.klx
Damage Factor D/fc	3.6 -
UV A	1823 mW/cm2
UV B	492 mW/cm2
UV C	532 mW/cm2
Specific Eff. Radiant Power	410 mW/klm

• Luminaire Design Requirements

Pinch Temperature	350 (max) C
Bulb Temperature	950 (max) C

MASTER MHN-FC

• Product Dimensions

Base Face to Base Face A	290 mm
Overall Length C	357 (max) mm
Diameter D	25.5 (nom), 33 (max) mm
Light Center Length L	177 mm
Arc Length O	108 mm
Cable Length X	58 mm

• Product Data

Order code	213495 00
Full product code	871150021349500
Full product name	MASTER MHN-FC 2000W/740 400V XW UNP

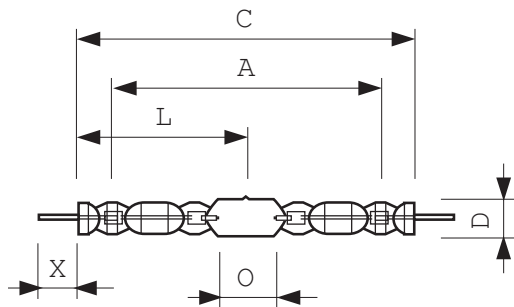
Order product name	MASTER MHN-FC 2000W/740 400V XW UNP
Pieces per pack	1
Packing configuration	1
Packs per outerbox	1
Bar code on pack - EAN1	8711500213495
Bar code on outerbox - EAN3	8711500213495
Logistic code(s) - 12NC	928070405130
ILCOS code	MD-2000/40/2B-H-XW
Net weight per piece	145.000 gr

Warnings and Safety

- Use only in totally enclosed luminaire, even during testing (IEC61167, IEC 62035, IEC60598)

- The luminaire must be able to contain hot lamp parts if the lamp ruptures

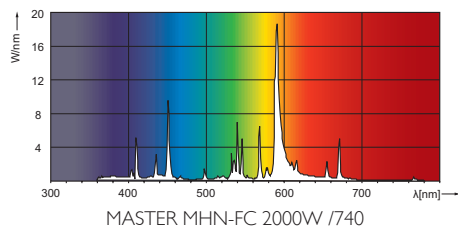
Dimensional drawing



MHN-FC, 1000W/2000W

Product	A (Norm)	C (Max)	D (Norm)	D (Max)	L (Norm)	O (Norm)	X (Norm)
MHN-FC 2000W/740 400V XW	290	357	25.5	33	177	108	58

Photometric data





© 2012 Koninklijke Philips Electronics N.V.
All rights reserved.

Specifications are subject to change without notice. Trademarks are the property of Koninklijke Philips Electronics N.V. or their respective owners.

www.philips.com/lighting

2012, September 10
data subject to change