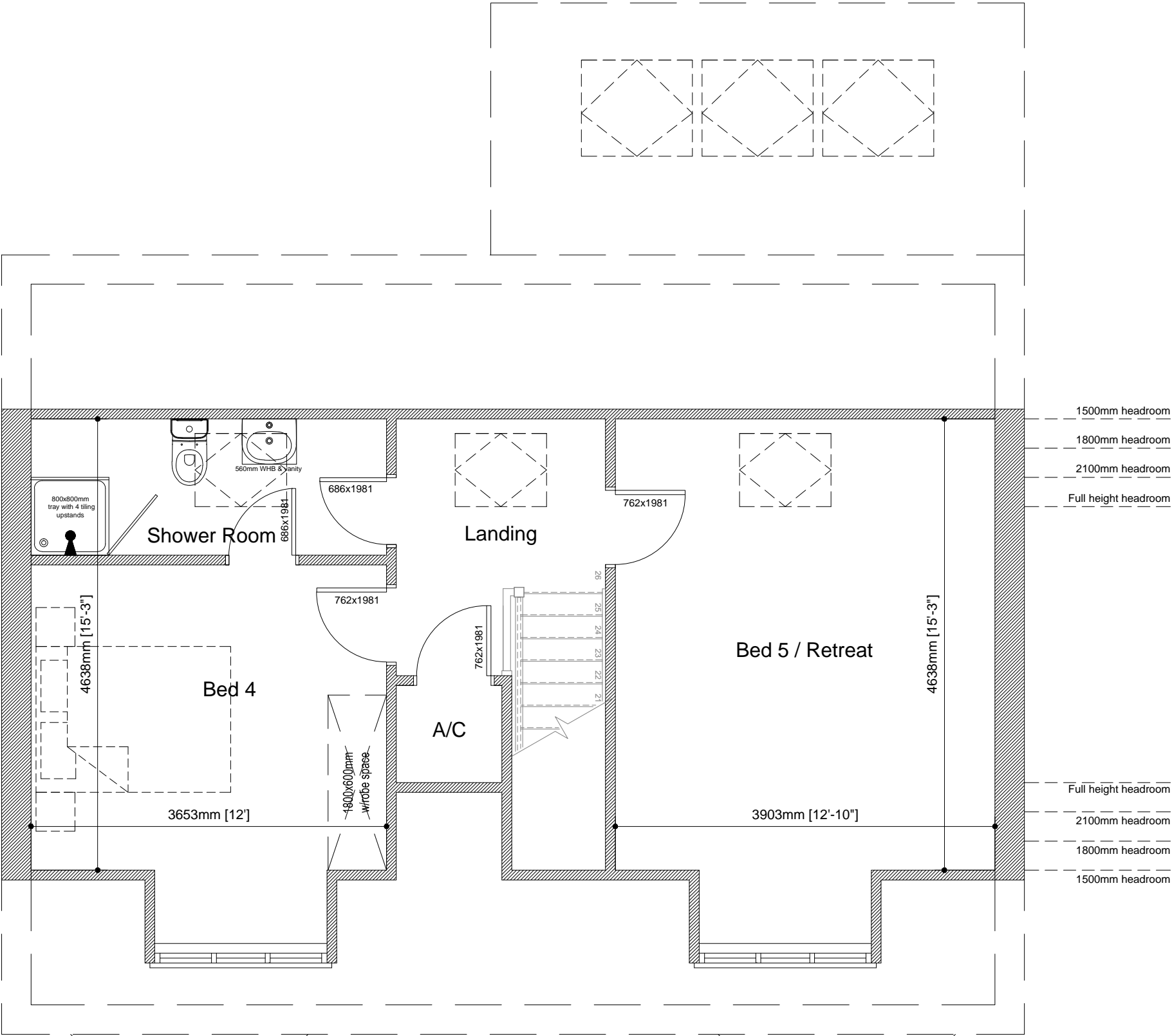


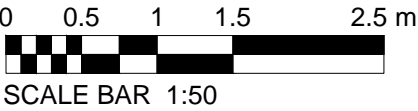
The Regent (Larger Dormer)	
Old Ref :	The Priory
Gross Area :	2244 sqft
Ground Floor :	957 sqft
First Floor :	788 sqft
Second Floor :	499 sqft
Circulation :	300 sqft
Net to Gross	13.60%
All Areas and dimensions are taken to STRUCTURAL FINISH.	



# The Regent

(2244sqft)

Second Floor Plan  
Scale 1:50







**COUNTRYSIDE**  
Places People Love

Countryside Properties (UK) Limited  
Regeneration North  
600 Lakeside Drive  
Centre Park  
Warrington WA1 1RW  
Tel: 01925 248900 Fax: 01925 248901  
www.countryside-properties.com

site: **Countryside Properties  
Regeneration North  
2014 Range**

title: **The Regent  
Second Floor Plan  
(Larger Dormer)**

<b>A</b>	<b>30-01-15</b>	<b>MB</b>	<b>Updated to accord with DCO drawings</b>	
Rev	Date	By	Description	Chk'd
 			drawn by: <b>AC</b>	
			checked:	
			scale: <b>1:50</b> @A3	
			date: <b>Jan 2014</b>	
drawing no: <b>REGNT(14)-03</b>		sheet no: <b>Sheet 1 of 1</b>		revision: <b>A</b>