

FOR APPROVAL ISSUE

Nuair Ltd
Western Ind Estate
Caerphilly
Mid Glamorgan

Tel 02920 858 500
Fax 02920 858 555
Mail enquiries@nuaire.co.uk



DO NOT SCALE

THIS DRAWING IS FOR ILLUSTRATION PURPOSES ONLY. IN PREPARING THIS INFORMATION NUAIRE HAS REFERRED TO RECOMMENDED GUIDELINES SET OUT WITHIN THE BUILDING REGULATIONS AND OTHER RELEVANT ADVISORY DOCUMENTS AND ACKNOWLEDGES THAT THIS DOES NOT IN ANYWAY DEMONSTRATE COMPLIANCE WITH SUCH REGULATIONS.

CLIENT COMMENTS

- Hatching indicates Nuair Thermal Ductmaster.
- Ceiling mounted supply grille (Nuair part number - VS150)
- Ceiling mounted extract grille (Nuair part number - VS150)
- Extract double air brick (Nuair part number - PVC905NS)
- Supply double air brick (Nuair part number - PVC905NS)
- Exhaust & Fresh Air Intake roof cowl (Nuair part number - PVC4411)
- 45 Deg 150mm Dia bend (Nuair part number - PVC691WH)
- T-Piece 150mm Dia (Nuair part number - PVC692M)
- 90 Deg 150mm Dia bend (Nuair part number - PVC690WH)
- 90 Deg 220x90mm horizontal bend (Nuair part number - PVC950WH)
- Fan plenum - 220x90mm to 125mm Ø (Nuair part number - PVC940WH)
- Fan plenum - 220x90mm to 150mm Ø (Nuair part number - PVC961WH)
- 90° Thermal 220x90mm horizontal bend (Nuair part number - NTD-220-90H)
- 45° Thermal 220x90mm horizontal bend (Nuair part number - NTD-220-45H)
- Thermal Fan plenum - 220x90mm to 125mm Ø (Nuair part number - NTD-220-PL)
- Thermal 220x90 T-piece (Nuair part number - NTD-220-TP)
- Semi Rigid Acoustic Duct 150Ø (Nuair part number - SRDI150)
- Condensation Trap 150mmØ (Nuair part number - CONTRAP150)
- 150Ø - 125Ø Reducer (Nuair part number - PVC118WH)
- 150mm Dia Fire damper (Nuair part number - PVC688)
- 220x90mm Fire wrap with fire collar (Nuair part number - FW220x90mm FWS220x90mm)

PLEASE NOTE THAT ALL DUCTWORK WILL BE RIGID PVC UNLESS OTHERWISE STATED. ALL SIZES INDICATE INTERNAL DIMENSIONS. 150MM DIA DUCTWORK WILL HAVE AN EXTERNAL DIA OF 155MM. 220X90MM DUCTWORK WILL HAVE EXTERNAL DIMENSIONS OF 225X95MM.

DUCT SHOULD BE WRAPPED WITH A MATERIAL AT LEAST 25MM THICK IF TO BE INSULATED. PLEASE ENSURE CORE CUTS THROUGH JOISTS ARE SUITABLE TO ACCOMMODATE THE DUCTWORK.

VARIATIONS TO THIS DESIGN RESULTING IN ADDITIONAL DUCTING WILL BE CHARGED AT THE AGREED CONTRACT RATES.

ALL DUCT RUNS ASSUME CLEAR PATHS THROUGH CEILING VOIDS AND HAVE NOT ALLOWED FOR DEVIATION THROUGH JOISTS.

FLEXIBLE DUCTING HAS BEEN ALLOWED FOR THE FINAL UNIT CONNECTION. NO MORE THAN 300MM PER LEG SHOULD BE USED AS PER BPEC GUIDANCE.

ATTENUATION AND FIRE PROTECTION HAS BEEN EXCLUDED AS WE ARE NOT IN RECEIPT OF A FIRE STRATEGY OR ACOUSTIC REPORT AT THIS STAGE.

CONDENSATE DRAIN PIPEWORK WILL BE REQUIRED IN 21.5MM. THIS IS TO BE SUPPLIED BY OTHERS. ALL CONDENSATE PIPEWORK IS TO BE INSULATED WITHIN A COLD SPACE AND HAVE A MINIMUM FALL OF 10 DEGREES.

AN INLINE CONDENSATION TRAP IS REQUIRED ON ALL CONTINUOUS FANS FOR THE EXHAUST LEG THAT RISES VERTICALLY THROUGH THE ROOF.

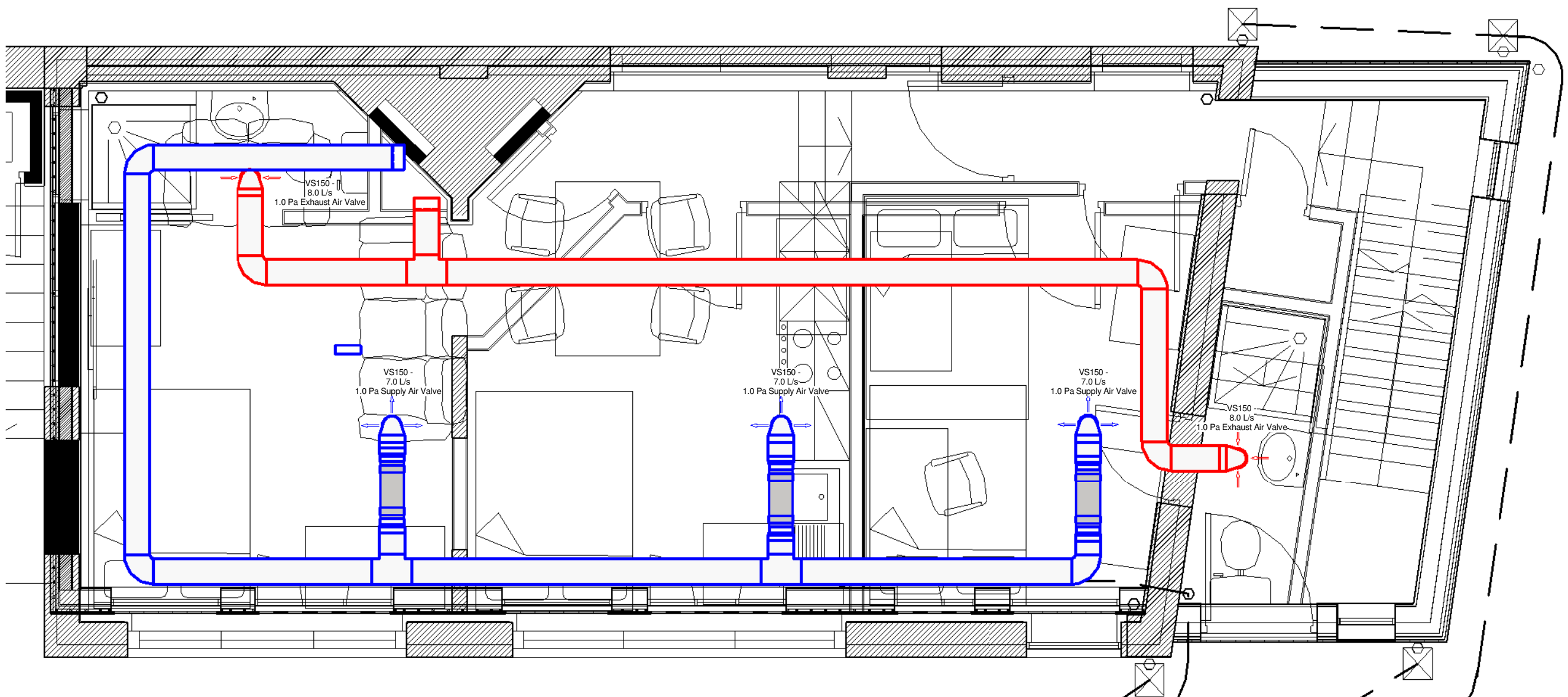
ALL DUCTING WITHIN AN UNHEATED SPACE MUST BE INSULATED IN ACCORDANCE WITH PART F OF THE 2010 BUILDING REGULATIONS. FRESH AIR INTAKE AND EXHAUST AIR LEGS ARE TO BE FULLY INSULATED BACK TO THE UNIT.

TILE VENTILATORS MUST HAVE A 125MM DIA CONNECTION AND AN EQUIVALENT FREE AREA OF AT LEAST 12250 MM². 1000MM MINIMUM IS REQUIRED BETWEEN TILE VENTS. EDGE TO EDGE TO COMPLY WITH CURRENT REGULATIONS.

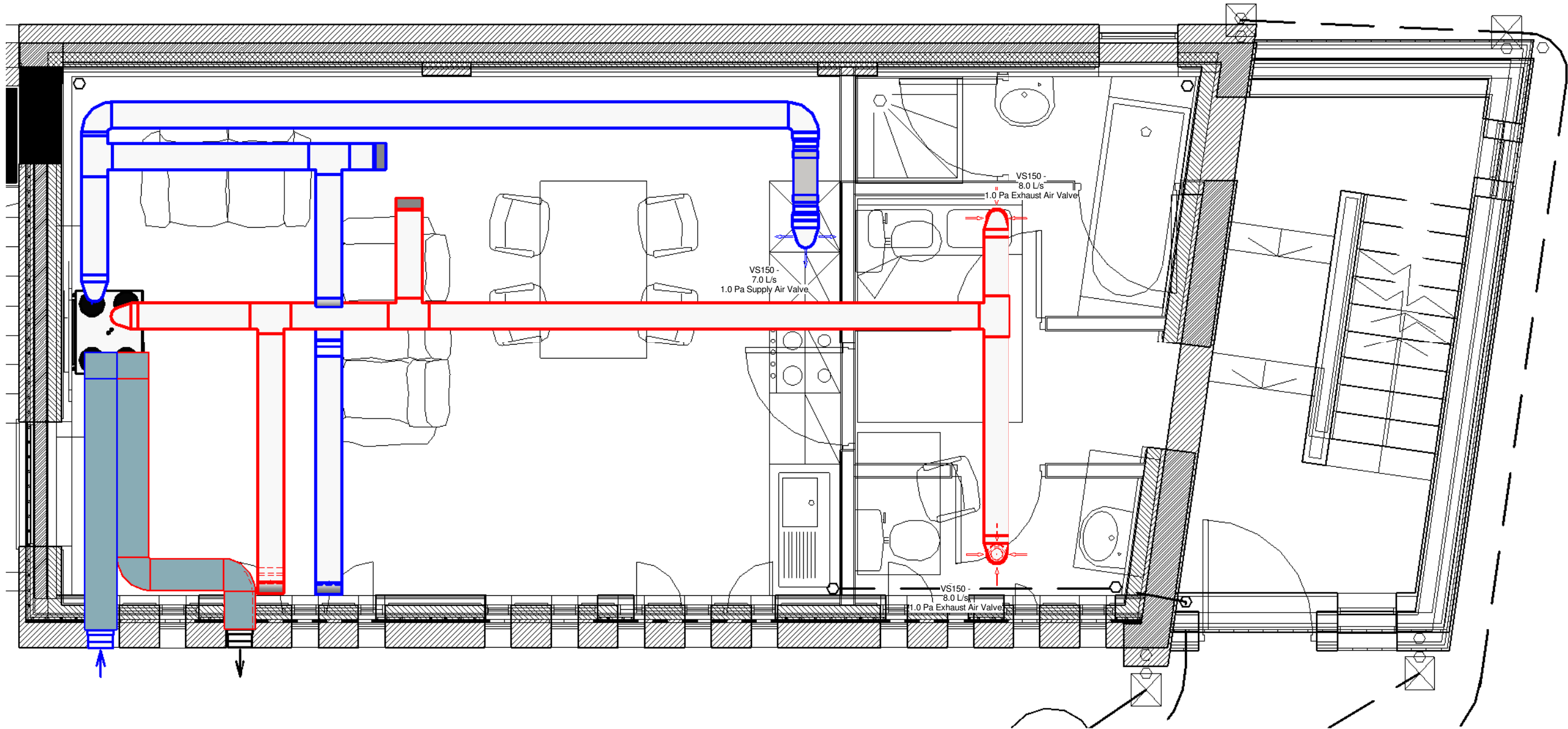
IT HAS BEEN ASSUMED THAT ANY LOFT SPACE IS AN UNHEATED, COLD SPACE.

A MINIMUM DISTANCE OF 500MM IS REQUIRED BETWEEN EACH SPIGOT OFF THE UNIT AND ANY DUCTWORK FITTING. FLEXIBLE DUCT SHOULD BE PULLED TAUGHT WITH SMOOTH BENDS ONLY.

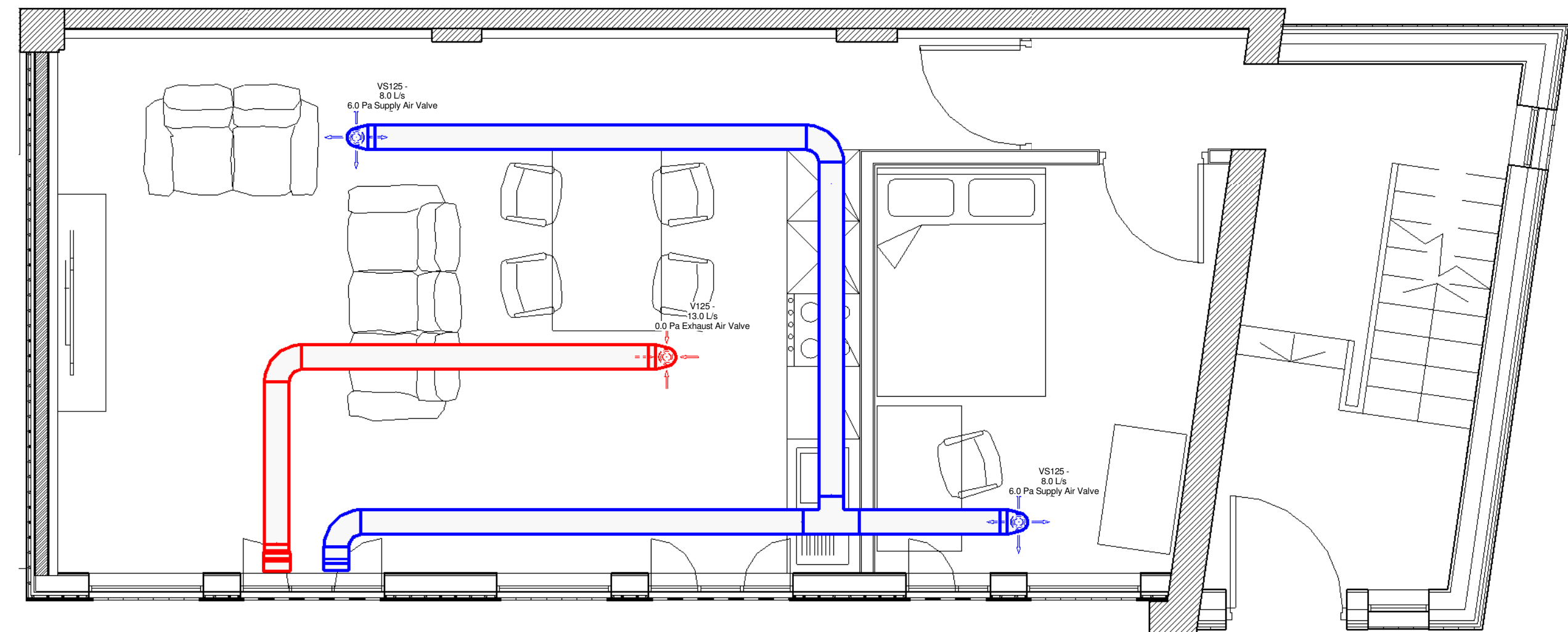
PLEASE NOTE TO COMPLY WITH CURRENT BUILDING REGULATIONS MANUAL BOOST SWITCHES ARE TO BE PROVIDED TO EACH WET AREA. THESE ARE TO BE PROVIDED AND FITTED BY OTHERS.



3 Second Floor
1 : 35



2 First Floor
1 : 35



1 Ground Floor
1 : 35

House Type

Trickle Rate = 59
Boost Rate = 43

<input checked="" type="checkbox"/> FOR APPROVAL	<input type="checkbox"/> ILLUSTRATION ONLY
<input type="checkbox"/> SEE COMMENTS	<input checked="" type="checkbox"/> PROPOSED INSTALLATION

No.	Revision Description	Date
A	ISSUED FOR APPROVAL	09/08/2016

CLIENT:
DENOVO DESIGN LTD

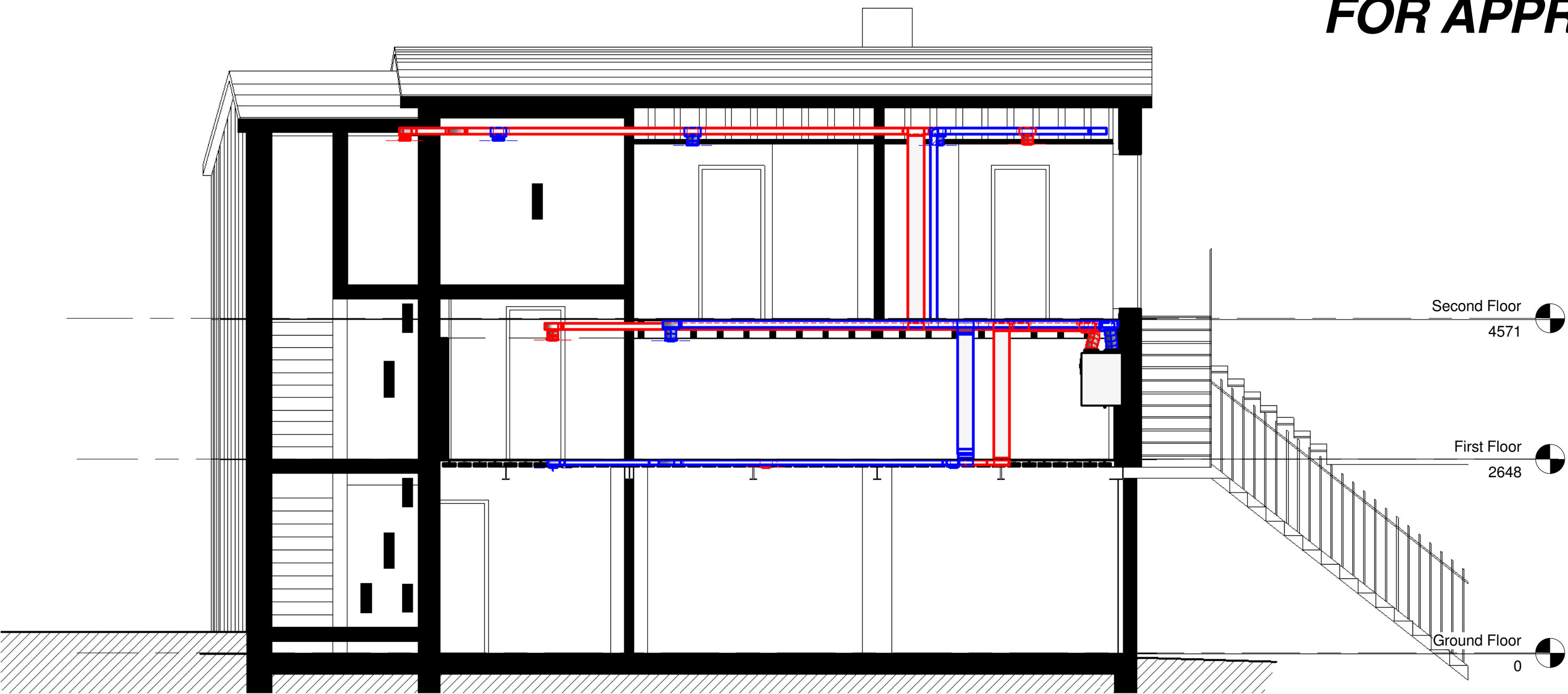
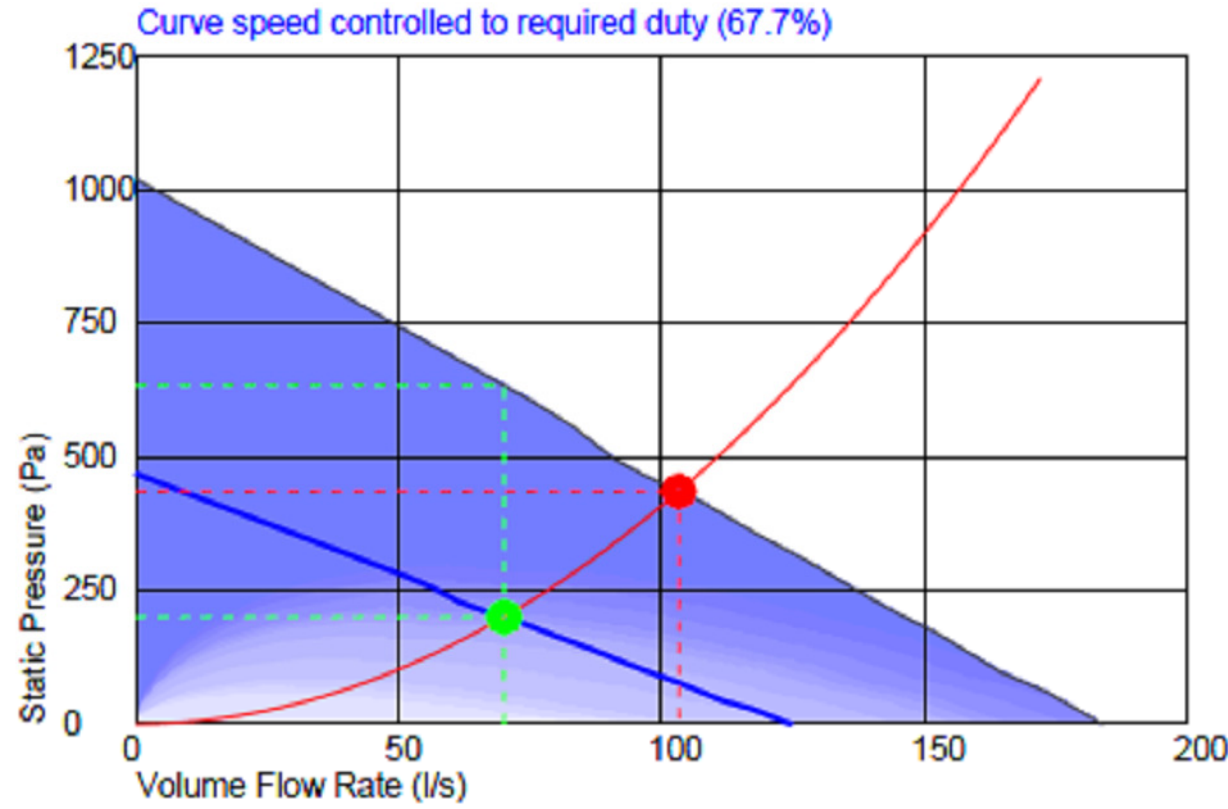
REVIEWED BY CLIENT (SIGNED): Checker	DATE:
---	-------

TITLE:
FORMER PLEASANT STREET SCHOOL

16/16535/RES

FIG. No.: -N01	SCALE: As indicated
DATE: 09/08/2016	AUTHOR: ND
	REVISION: A

Performance Curve



Sample Section

1 : 50

FOR APPROVAL ISSUE

PLEASE NOTE THAT ALL DUCTWORK WILL BE RIGID PVC UNLESS OTHERWISE STATED.
ALL SIZES INDICATE INTERNAL DIMENSIONS.
150MM DIA DUCTWORK WILL HAVE AN EXTERNAL DIA OF 155MM. 220X90MM DUCTWORK WILL HAVE AN EXTERNAL DIMENSIONS OF 225X95MM.

DUCT SHOULD BE WRAPPED WITH A MATERIAL AT LEAST 25MM THICK IF TO BE INSULATED.
PLEASE ENSURE CORE CUTS THROUGH JOISTS ARE SUITABLE TO ACCOMMODATE THE DUCTWORK.

VARIATIONS TO THIS DESIGN RESULTING IN ADDITIONAL DUCTING WILL BE CHARGED AT THE AGREED CONTRACT RATES.

ALL DUCT RUNS ASSUME CLEAR PATHS THROUGH CEILING VOIDS AND HAVE NOT ALLOWED FOR DEVIATION THROUGH JOISTS.

FLEXIBLE DUCTING HAS BEEN ALLOWED FOR THE FINAL UNIT CONNECTION, NO MORE THAN 300MM PER LEG SHOULD BE USED AS PER BPEC GUIDANCE.

ATTENUATION AND FIRE PROTECTION HAS BEEN EXCLUDED AS WE ARE NOT IN RECEIPT OF A FIRE STRATEGY OR ACOUSTIC REPORT AT THIS STAGE.

CONDENSATE DRAIN PIPEWORK WILL BE REQUIRED IN 21.5MM. THIS IS TO BE SUPPLIED BY OTHERS. ALL CONDENSATE PIPEWORK IS TO BE INSULATED WITHIN A COLD SPACE AND HAVE A MINIMUM FALL OF 10 DEGREES.

AN INLINE CONDENSATION TRAP IS REQUIRED ON ALL CONTINUOUS FANS FOR THE EXHAUST LEG THAT RISES VERTICALLY THROUGH THE ROOF.

ALL DUCTING WITHIN AN UNHEATED SPACE MUST BE INSULATED IN ACCORDANCE WITH PART F OF THE 2010 BUILDING REGULATIONS. FRESH AIR INTAKE AND EXHAUST AIR LEGS ARE TO BE FULLY INSULATED BACK TO THE UNIT.

TILE VENTILATORS MUST HAVE A 125MM DIA CONNECTION AND AN EQUIVALENT FREE AREA OF AT LEAST 12250 MM². 1000MM MINIMUM IS REQUIRED BETWEEN TILE VENTS, EDGE TO EDGE TO COMPLY WITH CURRENT REGULATIONS.

IT HAS BEEN ASSUMED THAT ANY LOFT SPACE IS AN UNHEATED, COLD SPACE.

A MINIMUM DISTANCE OF 500MM IS REQUIRED BETWEEN EACH SPIGOT OFF THE UNIT AND ANY DUCTWORK FITTING. FLEXIBLE DUCT SHOULD BE PULLED TAUGHT WITH SMOOTH BENDS ONLY.

PLEASE NOTE TO COMPLY WITH CURRENT BUILDING REGULATIONS MANUAL BOOST SWITCHES ARE TO BE PROVIDED TO EACH WET AREA. THESE ARE TO BE PROVIDED AND FITTED BY OTHERS.

Nuair Ltd
Western Ind Estate
Caerphilly
Mid Glamorgan

Tel 02920 858 500
Fax 02920 858 555
Mail enquiries@nuaire.co.uk



DO NOT SCALE

THIS DRAWING IS FOR ILLUSTRATION PURPOSES ONLY. IN PREPARING THIS INFORMATION NUAIRE HAS REFERRED TO RECOGNISED GUIDELINES SET OUT WITHIN THE BUILDING REGULATIONS AND OTHER RELEVANT ADVISORY DOCUMENTS AND ACKNOWLEDGES THAT THIS DOES NOT IN ANYWAY DEMONSTRATE COMPLIANCE WITH SUCH REGULATIONS.

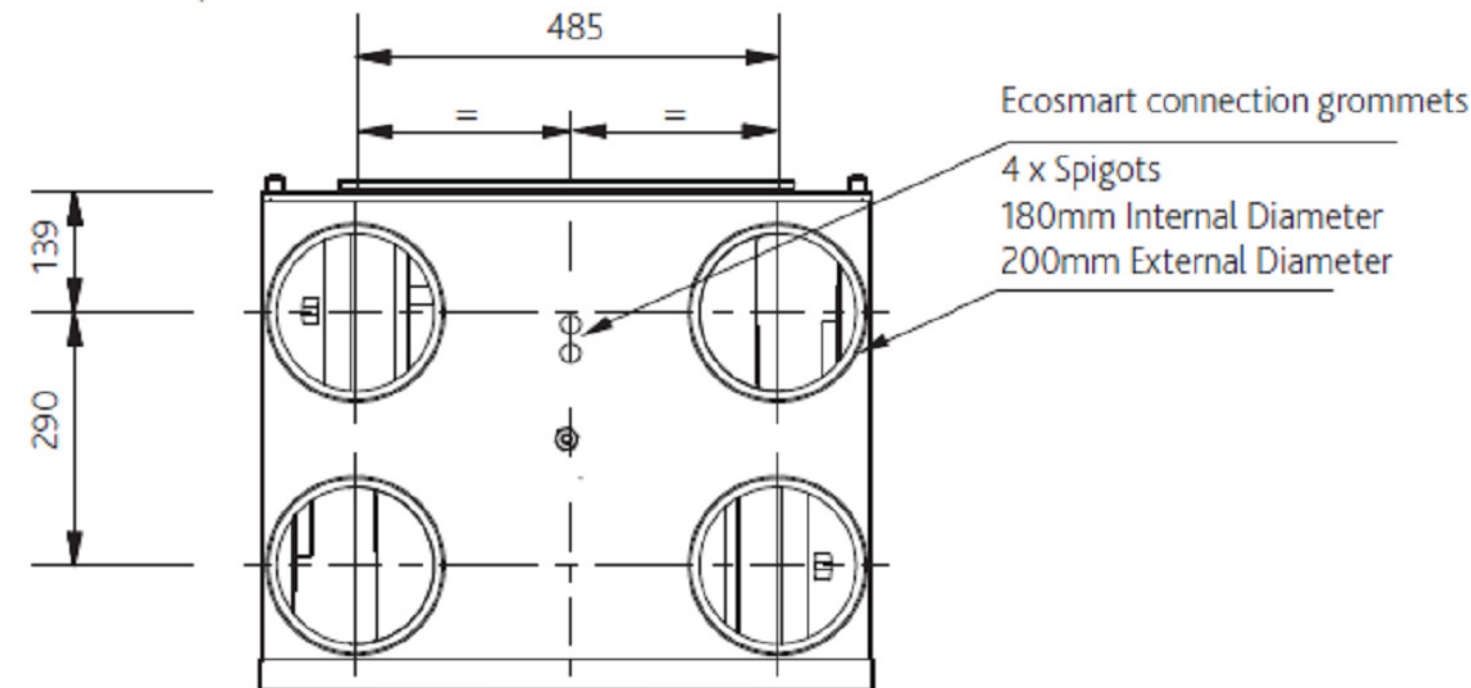
CLIENT COMMENTS

- Hatching indicates Nuair Thermal Ductmaster.
- Ceiling mounted supply grille (Nuair part number - VS150)
- Ceiling mounted extract grille (Nuair part number - VS150)
- Extract double air brick (Nuair part number - PVC905NS)
- Supply double air brick (Nuair part number - PVC905NS)
- Exhaust & Fresh Air Intake roof cowl (Nuair part number - PVC411)
- 45 Deg 150mm Dia bend (Nuair part number - PVC691WH)
- T-Piece 150mm Dia (Nuair part number - PVC692M)
- 90 Deg 150mm Dia bend (Nuair part number - PVC690WH)
- 90 Deg 220x90mm horizontal bend (Nuair part number - PVC950WH)
- Fan plenum - 220x90mm to 125mm Ø (Nuair part number - PVC940WH)
- Fan plenum - 220x90mm to 150mm Ø (Nuair part number - PVC961WH)
- 90° Thermal 220x90mm horizontal bend (Nuair part number - NTD-220-90H)
- 45° Thermal 220x90mm horizontal bend (Nuair part number - NTD-220-45H)
- Thermal Fan plenum - 220x90mm to 125mm Ø (Nuair part number - NTD-220-PL)
- Thermal 220x90 T-piece (Nuair part number - NTD-220-TP)
- Semi Rigid Acoustic Duct 1500 (Nuair part number - SRDI150)
- Condensation Trap 150mmØ (Nuair part number - CONTRAP150)
- 1500 - 1250 Reducer (Nuair part number - PVC118WH)
- 150mm Dia Fire damper (Nuair part number - PVC688)
- 220X90mm Fire wrap with fire collar (Nuair part number - FW220x90mm FWS220x90mm)

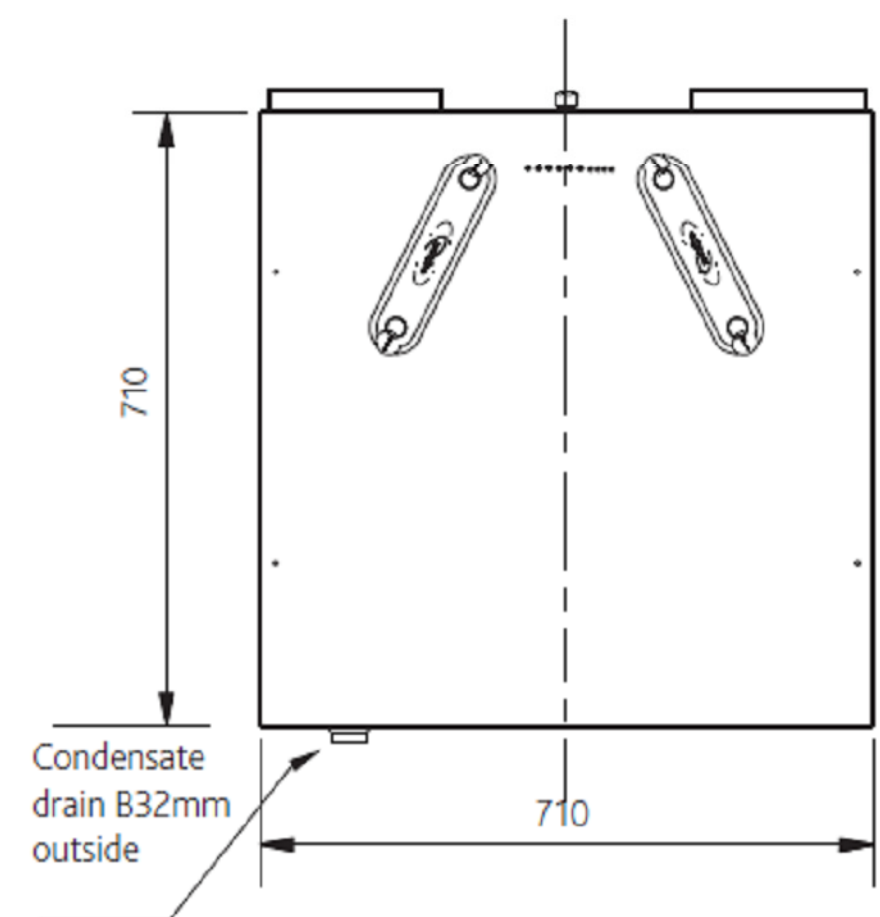
DIMENSIONS (MM)

Weight - 44Kg

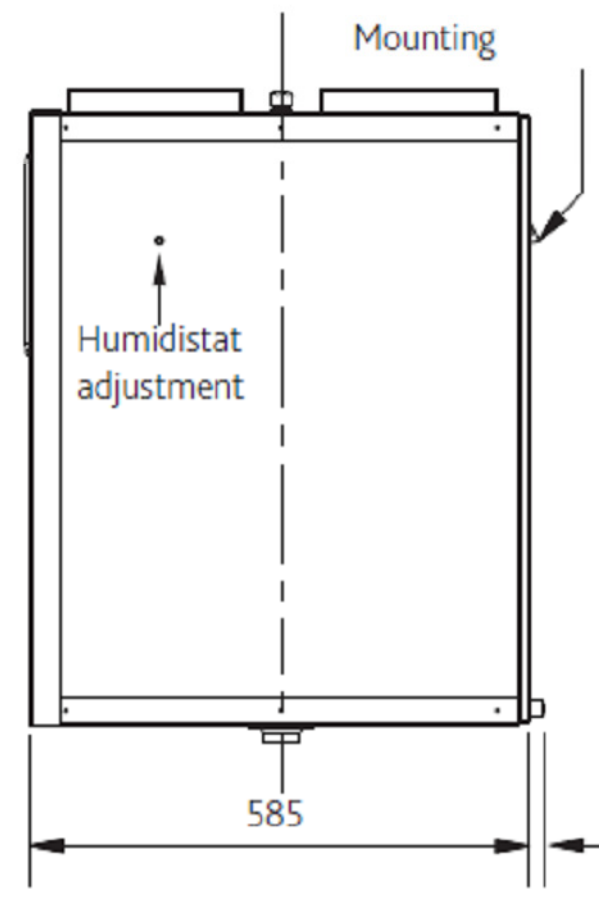
View from top



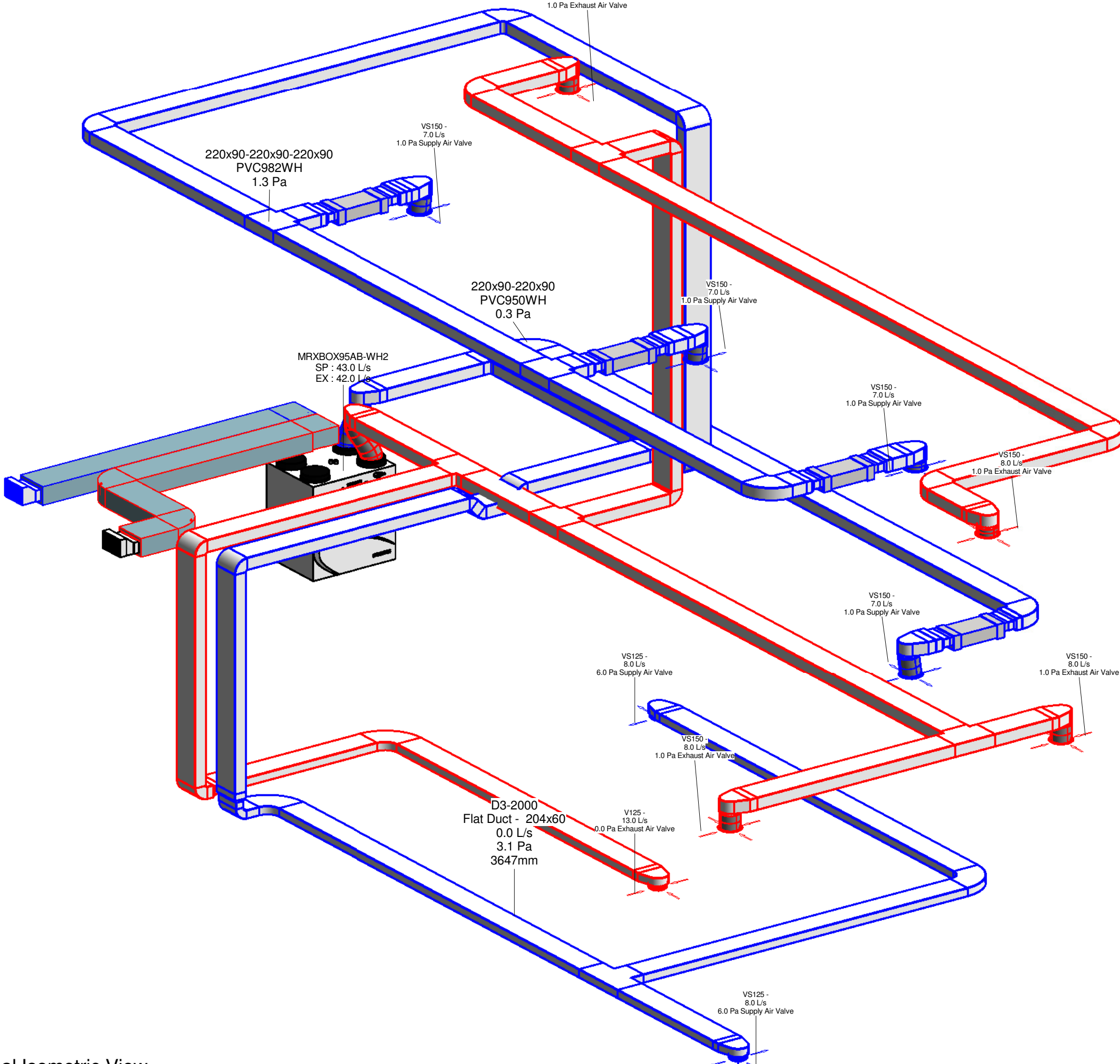
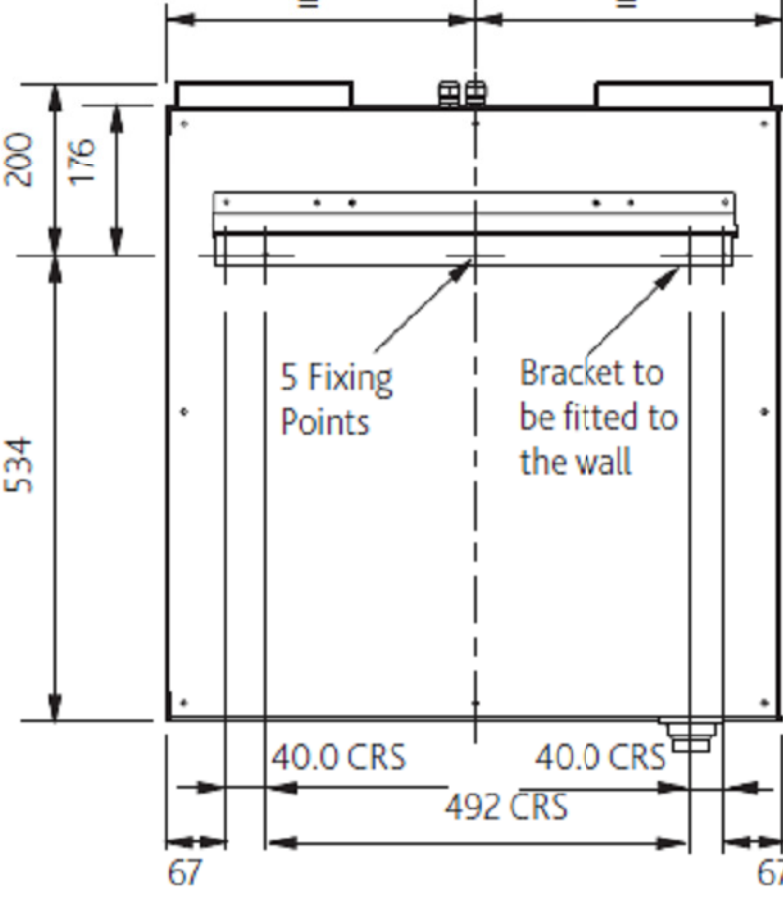
Front view



Side view



Dimensions: Unit wall mounting bracket position (Viewed from back)



Typical Isometric View

1

House Type

Trickle Rate = 59
Boost Rate = 43

☒ FOR APPROVAL ☐ ILLUSTRATION ONLY
☐ SEE COMMENTS ☒ PROPOSED INSTALLATION

No.	Revision Description	Date
A	ISSUED FOR APPROVAL	09/08/2016

CLIENT: DENOVO DESIGN LTD

REVIEWED BY CLIENT (SIGNED):
Checker

TITLE: FORMER PLEASANT STREET SCHOOL

16/16535/RES

SRG No: -NO2	SCALE: 1 : 50
DATE: 09/08/2016	AUTHOR: ND
	REVISION: A