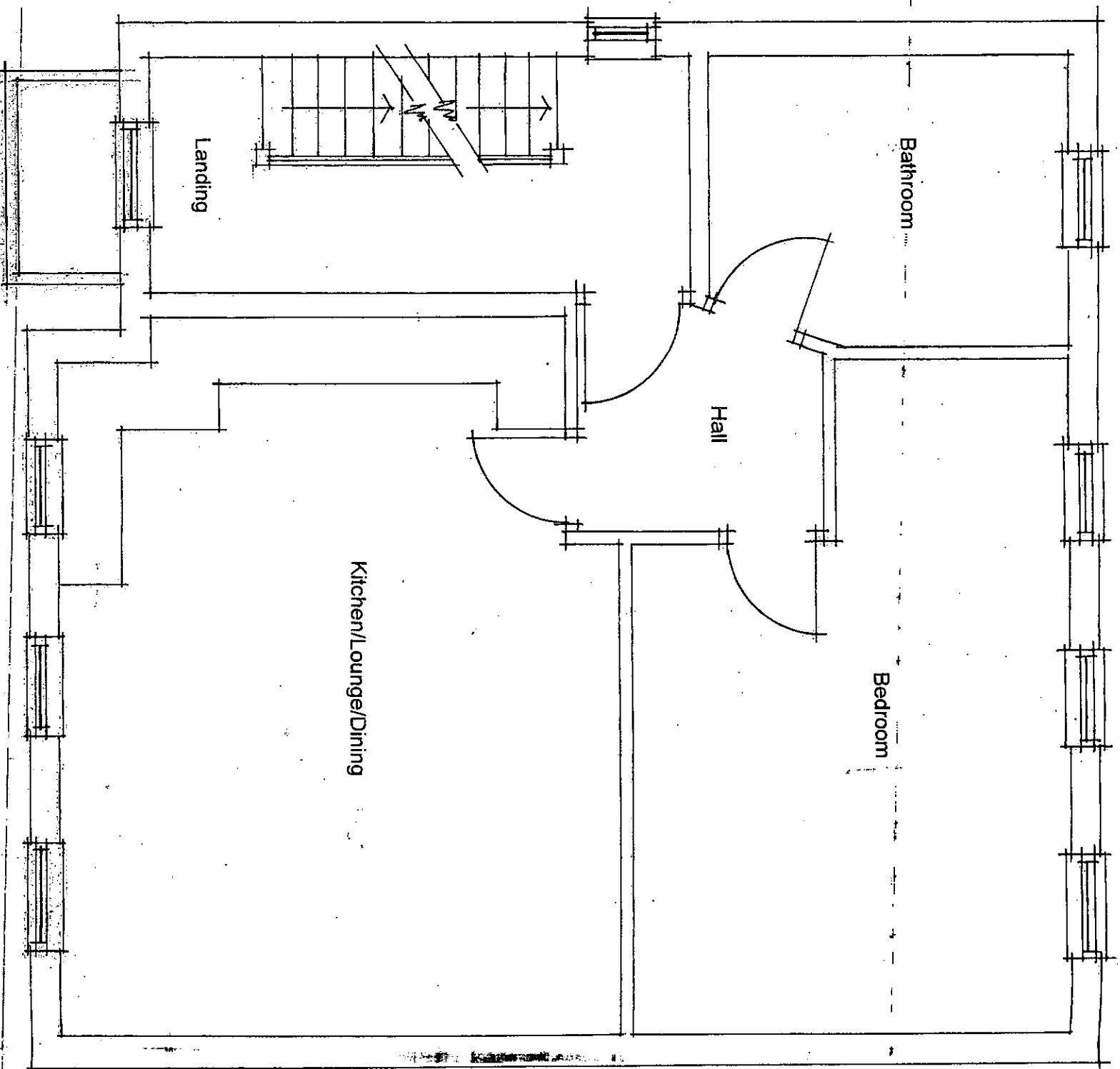


PROPOSED GROUND FLOOR PLAN – APARTMENT ONE (1:50)

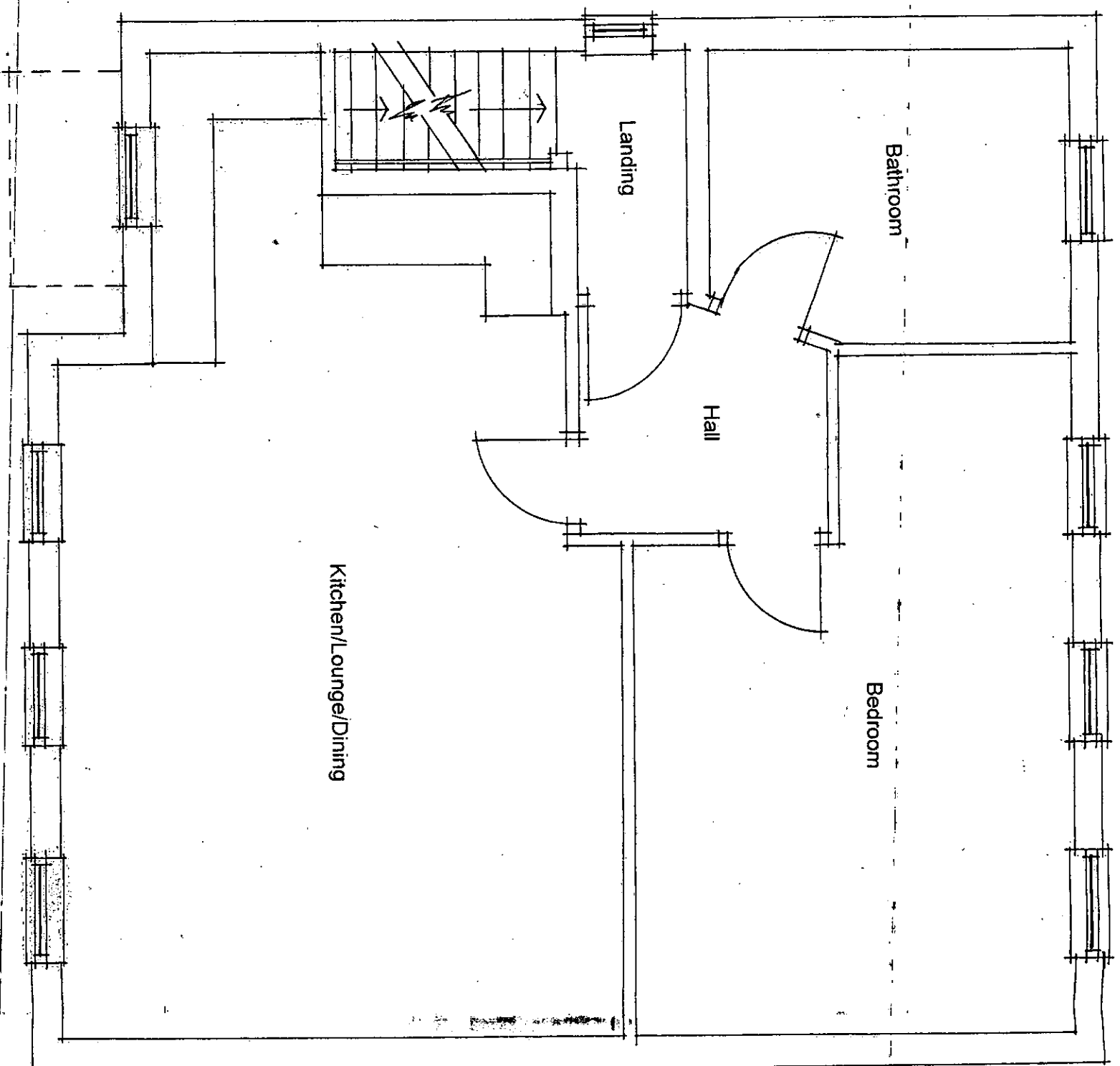
PROPOSED 3 STOREY 1 BED APARTMENTS  
at  
31 Beechwood Road, Aigburth, Liverpool, L19 0LA  
for  
Doyle Developments Limited  
October 2014  
Dwg No 100/04A



PROPOSED FIRST FLOOR PLAN – APARTMENT TWO (1:50)

PROPOSED 3 STOREY 1 BED APARTMENTS  
at  
31 Beechwood Road, Aigburth, Liverpool, L19 0LA  
for  
Doyle Developments Limited  
October 2014

Drwg No 100/05A



PROPOSED SECOND FLOOR PLAN - APARTMENT THREE (1:50)

**PROPOSED 3 STOREY 1 BED APARTMENTS**

at

31 Beechwood Road, Aigburth, Liverpool, L19 0LA

for

Doyle Developments Limited

October 2014

Dwg No 100/06A