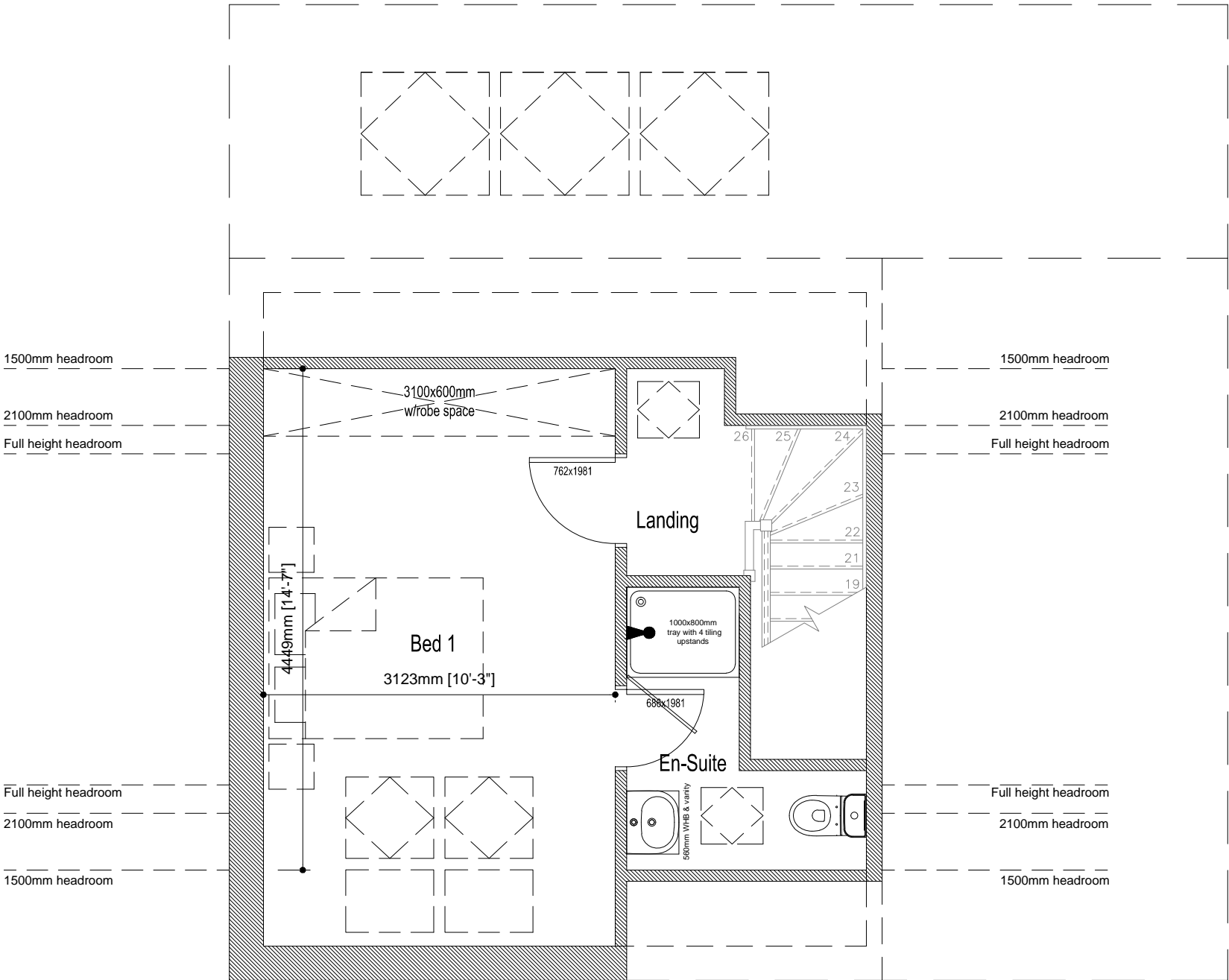
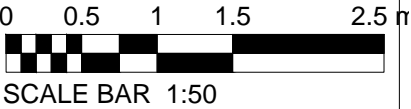


The Pocklington	
Old Ref :	-
Gross Area :	1305 sqft
Ground Floor :	543 sqft
First Floor :	515 sqft
Second Floor :	247 sqft
Circulation :	121 sqft
Net to Gross	9 %
All Areas and dimensions are taken to STRUCTURAL FINISH.	



Second Floor Plan  
Scale 1:50

# The Pocklington

(1305sqft)





**COUNTRYSIDE**  
Places People Love

Countryside Properties (UK) Limited  
Regeneration North  
600 Lakeside Drive  
Centre Park  
Warrington WA1 1RW  
Tel: 01925 248900 Fax: 01925 248901  
www.countryside-properties.com

site: **Countryside Properties  
Regeneration North  
2014 Range**

title: **The Pocklington  
Second Floor Plan**

A	15-12-14	GWP	A/C re-located to first floor. stairwell revised; bedroom dimensions increased accordingly.	
Rev	Date	By	Description	Chk'd
<div><div><p>FS 53054 ISO 9001:2008 EMS 61920 ISO 14001:2004</p></div><div><p>drawn by: <b>GWP</b></p><p>checked: <b>Oct 2013</b></p><p>scale: <b>1:50</b> @A3</p><p>date: <b>-</b></p></div><div><p>drawing no: <b>PKTON(14)-03</b></p><p>sheet no: <b>Sheet 1 of 1</b></p><p>revision: <b>A</b></p></div></div>				