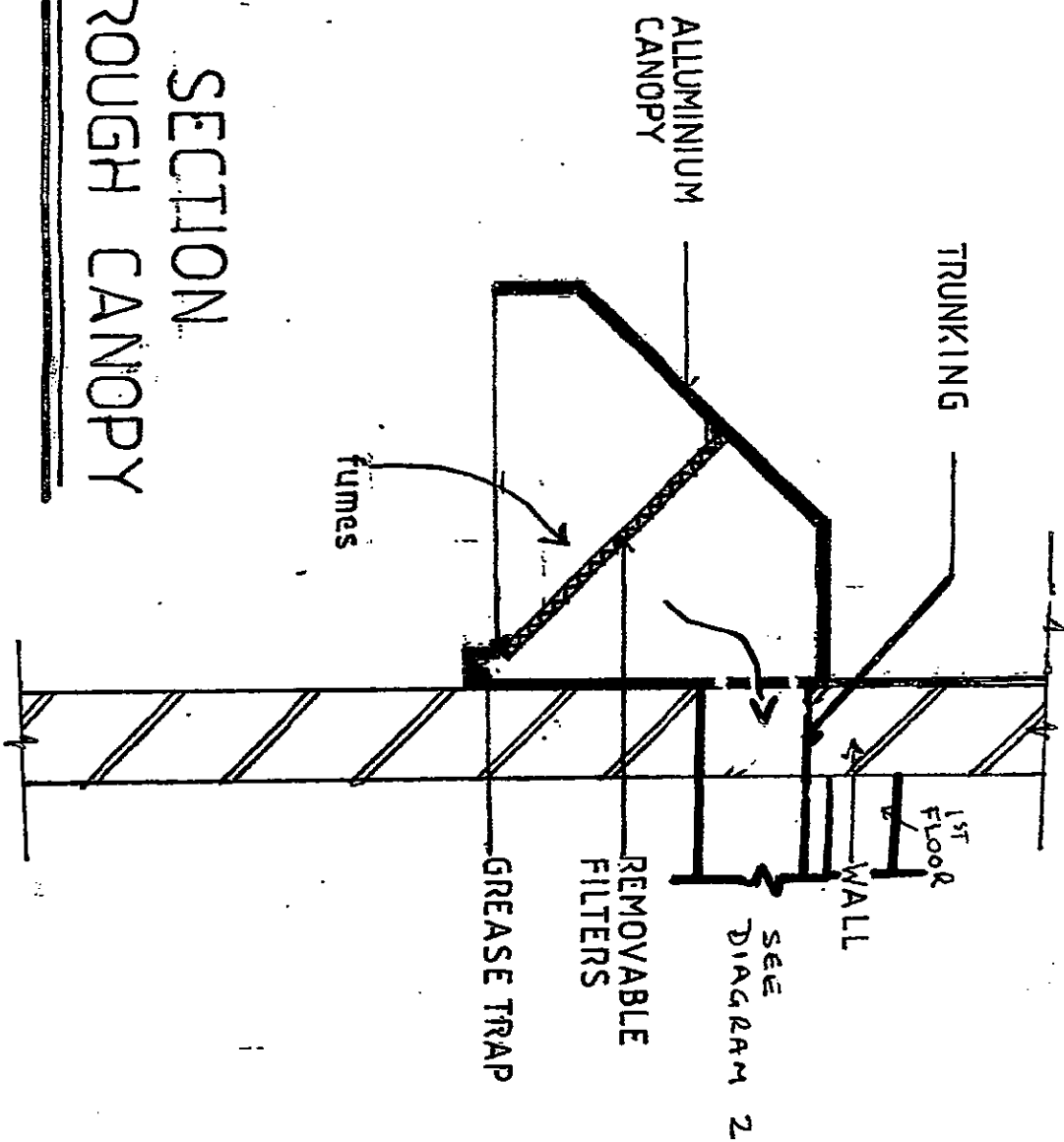


GEO-NEO UK LTD
ARCHITECTURAL Co.
7A ORCHARD GROVE
LIVERPOOL L17-7EY
TEL/FAX: 0151-727 8223

DIAGRAM 2

CANOPY & EXTRACTION DETAILS: n.t.s.

DIAGRAM 1



SECTION THROUGH CANOPY

NOTES

GEO-NEO UK LTD
 ARCHITECTURAL Co.
 7A ORCHARD GROVE
 LIVERPOOL, L17 7BY
 TEL/FAX: 0151-727 8223



7A Orchard Grove
 Liverpool
 L17 7BY
 U.K.

GEO - NEO
 ARCHITECTURAL CO

*Drawings, Constructions
 Consultations*

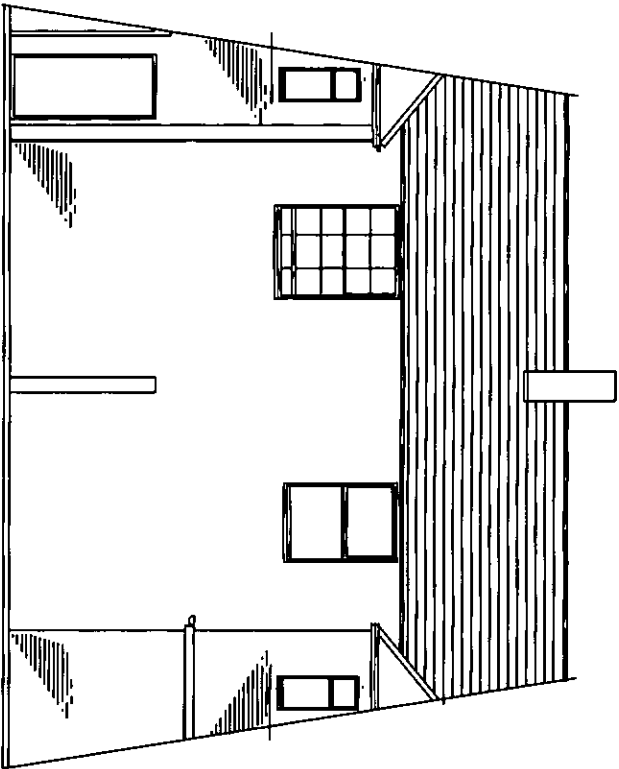


Director:
 George Neophytou
 Architectural Consultant

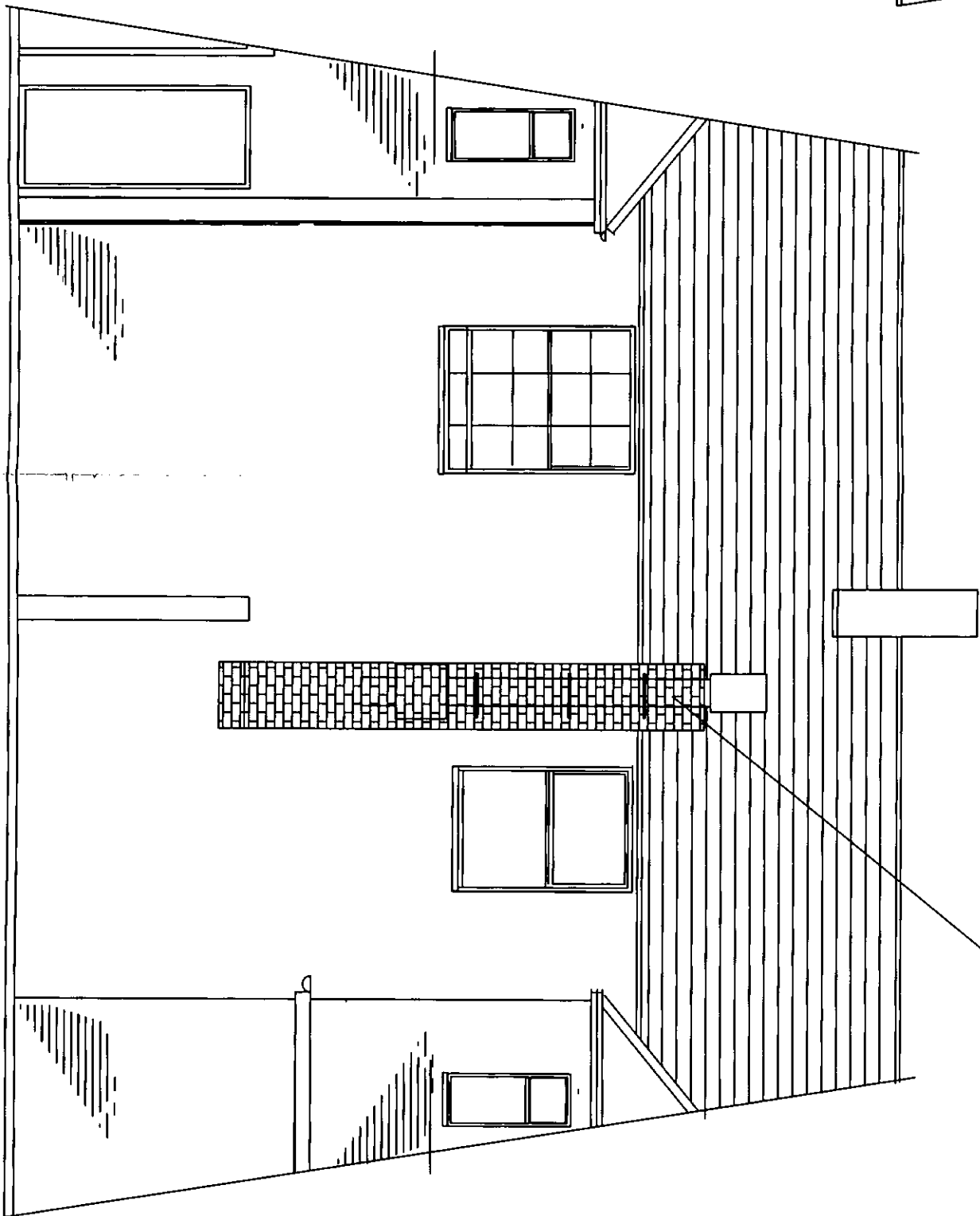
Partners:
 N. Neophytou, Bsc
 C. Neophytou, Engineer



Tel/Fax: 0151 727 8223



EXISTING REAR ELEVATION
Scale 1:100



Ducting to terminate min 1.3m above eaves
of main roof
ducting to be boxed in and covered with
GRP (brick effect)

PROPOSED REAR ELEVATION
Scale 1:50

AMENDED 7/12/12

amendment	date	description

location: 518-520 Mather Avenue
Liverpool

client: Mr Khalid Dugesh
project: Extend existing cafe
into empty shop next
door

drawing: Existing/Proposed
Rear elevations

drawing no:	scale:
W.12/42/011	1:100/1:50
revision/changes	date:
07973931450	December 2012

GEO-NEO UK Ltd Architectural Co.
7a Orchid Grove
Liverpool L17-7EY
Tel/Fax: 0151-727 8223.

e-mail: geoneo@gmail.com

HEPT-45 & HEPT-50 FAN DETAILS



GENERAL DESCRIPTION

FAN
Space saving integration of motor and impeller
Rolled steel casing
Fan guard with integral motor mounting to DIN and UNE standards
Impeller in Polyamide 6 with fibreglass reinforcement
Dynamically balanced to ISO 1940
Zinc phosphate surface treated steel
Epoxy resin anti-corrosive finish, kiln dried at 200°C

MOTOR

Squirrel-cage induction motor
Three-phase dual voltage connection 230/400V 50Hz
Single Phase 230V 50Hz
IP65 dust and hosed water protection
Class F winding insulation with Class B temperature rise
Over-heat protection by self-resetting thermo-contact
Permitted air-stream temperatures:

GEO-NEO UK LTD
ARCHITECTURAL Co.
7A ORCHID GROVE
LIVERPOOL L17-7EY
TEL/FAX: 0151-727 8223

2 pole (2800/min) motors -25°C up to +45°C
4 pole (1400/min) & 6 pole (930/min) motors -25°C up to +60°C

Model	Airflow rate	Speed	Max electrical supply		Input power	Sound level (*)	Weight	Curve	Dimensions (mm)					
	m³/h	rpm	A	400V	W	db(A)	kg		ØA	ØB	ØC	D	ØE	Number of holes
			230V	400V										
HEPT-45-4T/H	7300	1400	-	1.22	470	66	15.5	1	540	500	460	220	12	8
HEPT-45-4M/H	7300	1400	2.35	-	480	66	15.5							
HEPT-45-6T/H	4900	955	-	0.82	210	56	15.5							
HEPT-45-6M/H	4900	955	1.4	-	225	56	15.5	2						
HEPT-50-4T/H	10150	1420	-	1.80	720	69	18.0	3	600	560	514	230	12	12
HEPT-50-4M/H	10150	1380	3.45	-	720	69	18.0							
HEPT-50-6T/H	6150	950	-	0.80	240	59	18.0	4						
HEPT-50-6M/H	6150	950	1.38	-	245	59	18.0							

