

# PERFORATED LATH

## Roller Shutters

Bolton Gate Perforated Lath Roller Shutters are an ideal method of securing premises such as shopfronts whilst maintaining the see-through aspect when the shop is backlit. Used extensively in shopping malls and high street retail premises, perforated lath roller shutters present a most economical method of providing a secure closure to large or small openings. The shutters are robust and have a long life with little maintenance required.

**Bolton Gate** Perforated Lath Roller Shutters have been supplied on many prestigious projects worldwide and come with the technical design and back-up for which the Company is renowned. Shutters can be supplied as standard up to 7000mm wide.

### STANDARD SPECIFICATION

#### **Curtain**

Shutter curtains are constructed from continuously interlocked galvanised perforated steel laths, securely held in place by end locks. Both 51mm flat and 76mm curved profiles are available dependent upon size. Bottom rails are galvanised and roll-formed into a tee section.

#### **Guides**

Vertical guides are formed from rolled steel or fabricated dependent on size and are supplied with suitable angles for fixing to the structure.

#### **Endplates**

Prime painted mild steel of appropriate thickness relative to door size and supplied with angles for fixing to the structure.

#### **Barrel**

The barrel is constructed from seamless steel tube of adequate diameter to resist deflection and held in bearings or cups attached to the endplates.

#### **Finish**

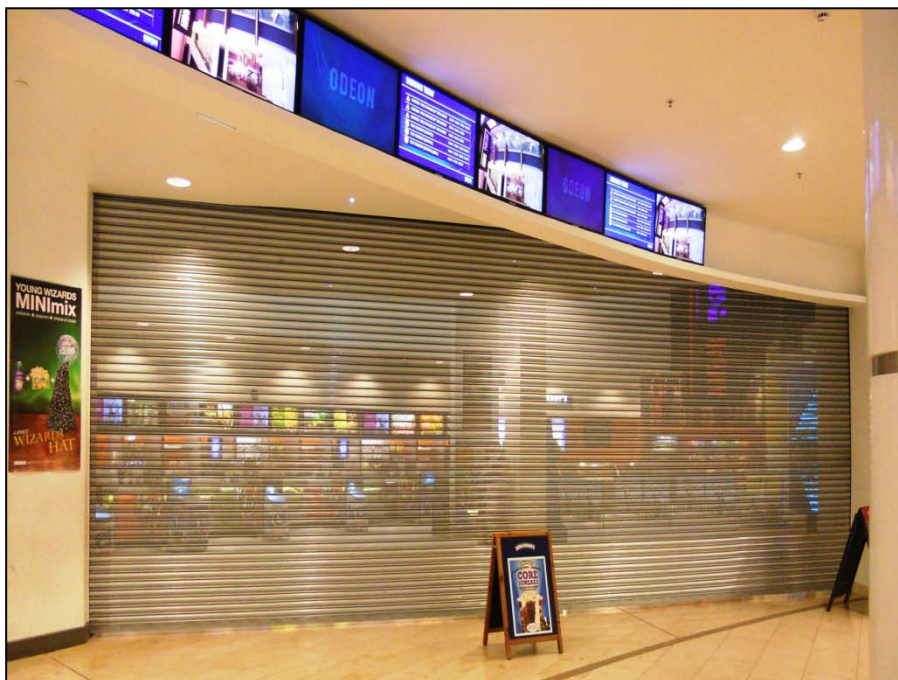
Generally galvanised with non-galvanised parts prime painted.

### MAXIMUM SIZES

7 metres wide x 4 metres high.

### ELECTRIC OPERATION

Electrical operation is by means of a single phase tubular motor. A safety brake is fitted to all shutters where personnel could pass underneath thus meeting all relevant Health & Safety requirements. The client should provide a fused spur within 500mm of the motor



The standard method of control is by means of internal wall-mounted rocker switch. Other types of control including keyswitches and group controls are available at extra cost.

### WEIGHT

Dependent upon size and lath configuration but typically 30kgs per m<sup>2</sup>.

### OPTIONS

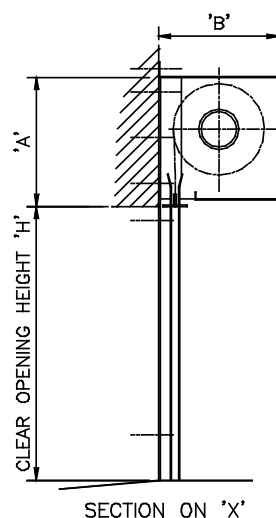
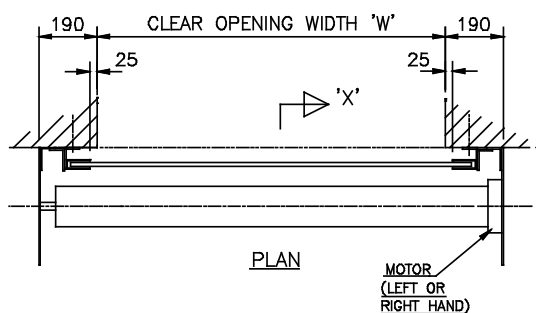
- Keyswitches
- Radio remote control
- Photocells
- Timer closing
- Polyester powder coated finish
- Hoods
- Fascias

# PERFORATED LATH

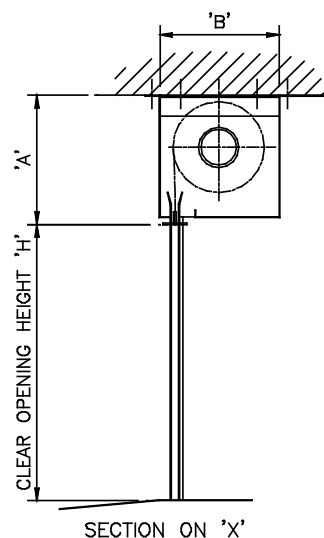
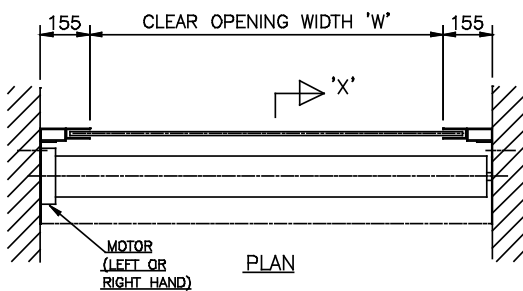
## Roller Shutters

### ELECTRIC (TUBE MOTOR)

#### FACE FIXED



#### BETWEEN FIXED



HEIGHT	ENDPLATE SIZE	
	'A'	'B'
2900	300	300
3600	350	350
4000	400	400
5000	450	450