

Appendix 3: List Entry Description for the Railings and Piers

RAILINGS AND PIERS TO BEVINGTON STREET RECREATION GROUND

List Entry Summary

This building is listed under the Planning (Listed Buildings and Conservation Areas) Act 1990 as amended for its special architectural or historic interest.

Name: RAILINGS AND PIERS TO BEVINGTON STREET RECREATION GROUND

List entry Number: 1252998

Location

RAILINGS AND PIERS TO BEVINGTON STREET RECREATION GROUND,
BEVINGTON STREET

RAILINGS AND PIERS TO BEVINGTON STREET RECREATION GROUND,
LIMEKILN LANE

RAILINGS AND PIERS TO BEVINGTON STREET RECREATION GROUND,
TITCHFIELD STREET

The building may lie within the boundary of more than one authority.

County:

District: Liverpool

District Type: Metropolitan Authority

Parish:

National Park: Not applicable to this List entry.

Grade: II

Date first listed: 24-Sep-1993

Date of most recent amendment: Not applicable to this List entry.

Legacy System Information

The contents of this record have been generated from a legacy data system.

Legacy System: LBS

UID: 436117

Asset Groupings

This list entry does not comprise part of an Asset Grouping. Asset Groupings are not part of the official record but are added later for information.

List entry Description

Summary of Building

Legacy Record - This information may be included in the List Entry Details.

Reasons for Designation

Legacy Record - This information may be included in the List Entry Details.

History

Legacy Record - This information may be included in the List Entry Details.

Details

SJ3491 LIVERPOOL BEVINGTON STREET/ LIMEKILN LANE (North Side)

392-/23/10015 (STREET A-K) Railings and piers to Bevington Street Recreation Ground

GV II

Includes: Railings and Piers to Bevington Street Recreation Ground
TITCHFIELD STREET LIVERPOOL, CITY OF (STREETS L-Z). Piers, gates and railings to play area. c1912, to accompany the Eldon Grove Labourers' Dwellings. Brick and metal, to four sides of rectangular ground bordered by the flats to the north. Bevington Street to the south, Titchfield Street to the west and Limekiln Street to the east.

Selected Sources

Legacy Record - This information may be included in the List Entry Details

National Grid Reference: SJ 34608 91665

Map



© Crown Copyright and database right 2016. All rights reserved. Ordnance Survey Licence number 100024900.
 © British Crown and SeaZone Solutions Limited 2016. All rights reserved. Licence number 102006.006.

The above map is for quick reference purposes only and may not be to scale.
 For a copy of the full scale map, please see the attached PDF - [1252998.pdf](#)
http://gisservices.HistoricEngland.org.uk/printwebservice/hle/StatutoryPrint.svc/231771/HLE_A4L_Grade/HLE_A3L_Grade.pdf

The PDF will be generated from our live systems and may take a few minutes to download depending on how busy our servers are. We apologise for this delay.

This copy shows the entry on 29-Jan-2016 at 09:51:39.

Appendix 4: List Entry Description for the Street Lamps

STREET LAMP BETWEEN ELDON GROVE AND BEVINGTON STREET

List Entry Summary

This building is listed under the Planning (Listed Buildings and Conservation Areas) Act 1990 as amended for its special architectural or historic interest.

Name: STREET LAMP BETWEEN ELDON GROVE AND BEVINGTON STREET

List entry Number: 1063307

Location

STREET LAMP BETWEEN ELDON GROVE AND BEVINGTON STREET, TITCHFIELD STREET

The building may lie within the boundary of more than one authority.

County:

District: Liverpool

District Type: Metropolitan Authority

Parish: Non Civil Parish

National Park: Not applicable to this List entry.

Grade: II

Date first listed: 14-Mar-1975

Date of most recent amendment: Not applicable to this List entry.

Legacy System Information

The contents of this record have been generated from a legacy data system.

Legacy System: LBS

UID: 359610

Asset Groupings

This list entry does not comprise part of an Asset Grouping. Asset Groupings are not part of the official record but are added later for information.

List entry Description

Summary of Building

Legacy Record - This information may be included in the List Entry Details.

Reasons for Designation

Legacy Record - This information may be included in the List Entry Details.

History

Legacy Record - This information may be included in the List Entry Details.

Details

SJ 3491 TITCHFIELD STREET L5

23/1231 Street lamp between Eldon Grove and Bevington Street 14.3.75. - II

Cast iron lamp, probably beginning of C20. Square plinth with Greek key ornament, and formerly with drinking fountain on 2 sides. Lamp stands above this high plinth, with splayed base ornamented with foliage patterns and with corner feet: fluted high column with 2 ornamented arms holding lamp. Now in front of tarmac play area, with similar lamp at opposite side (Limekiln Lane (q.v.)). Built as part of playground in front of Eldon Grove housing, 1911-12.

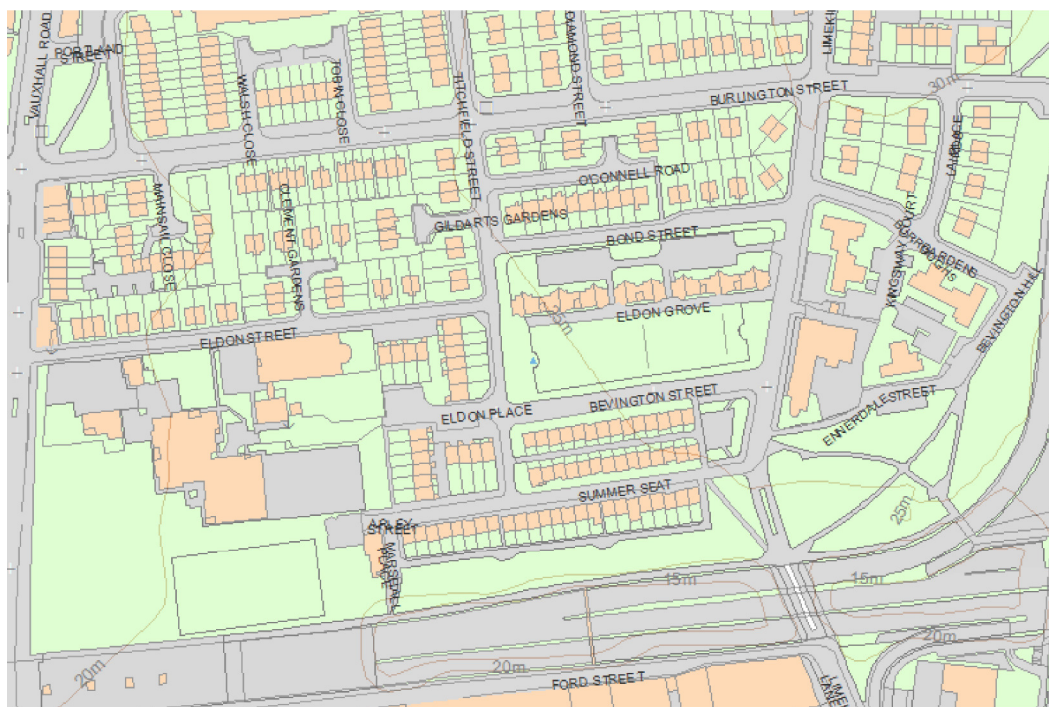
Listing NGR: SJ3455191642

Selected Sources

Legacy Record - This information may be included in the List Entry Details

National Grid Reference: SJ3455191642

Map



© Crown Copyright and database right 2016. All rights reserved. Ordnance Survey Licence number 100024900.
 © British Crown and SeaZone Solutions Limited 2016. All rights reserved. Licence number 102006.006.

The above map is for quick reference purposes only and may not be to scale.
 For a copy of the full scale map, please see the attached PDF - [1063307 .pdf](#)
http://gisservices.HistoricEngland.org.uk/printwebservice/hle/StatutoryPrint.svc/65973/HLE_A4L_Grade|HLE_A3L_Grade.pdf

The PDF will be generated from our live systems and may take a few minutes to download depending on how busy our servers are. We apologise for this delay.

This copy shows the entry on 29-Jan-2016 at 09:50:40.

STREET LAMP BETWEEN ELDON GROVE AND BEVINGTON STREET

List Entry Summary

This building is listed under the Planning (Listed Buildings and Conservation Areas) Act 1990 as amended for its special architectural or historic interest.

Name: STREET LAMP BETWEEN ELDON GROVE AND BEVINGTON STREET

List entry Number: 1346277

Location

STREET LAMP BETWEEN ELDON GROVE AND BEVINGTON STREET, LIMEKILN LANE

The building may lie within the boundary of more than one authority.

County:

District: Liverpool

District Type: Metropolitan Authority

Parish: Non Civil Parish

National Park: Not applicable to this List entry.

Grade: II

Date first listed: 14-Mar-1975

Date of most recent amendment: Not applicable to this List entry.

Legacy System Information

The contents of this record have been generated from a legacy data system.

Legacy System: LBS

UID: 359019

Asset Groupings

This list entry does not comprise part of an Asset Grouping. Asset Groupings are not part of the official record but are added later for information.

List entry Description

Summary of Building

Legacy Record - This information may be included in the List Entry Details.

Reasons for Designation

Legacy Record - This information may be included in the List Entry Details.

History

Legacy Record - This information may be included in the List Entry Details.

Details

SJ 3491 LIMEKILN LANE (west side) L3

23/685 Street lamp between Eldon Grove and Bevington Street 14.3.75. - II

Street lamp. Built as part of playground in front of Eldon Grove Housing 1911/2, probably beginning of C20. Cast iron. Large and high square plinth with Greek key ornament, and formerly with drinking fountain on 2 sides. Lamp stands above this high plinth, with splayed base ornamented with foliage pattern and with corner feet: fluted high columns with two ornamented arms holding lamp. Now in front of tarmac play area, with similar lamp at opposite side (see Titchfield Street).

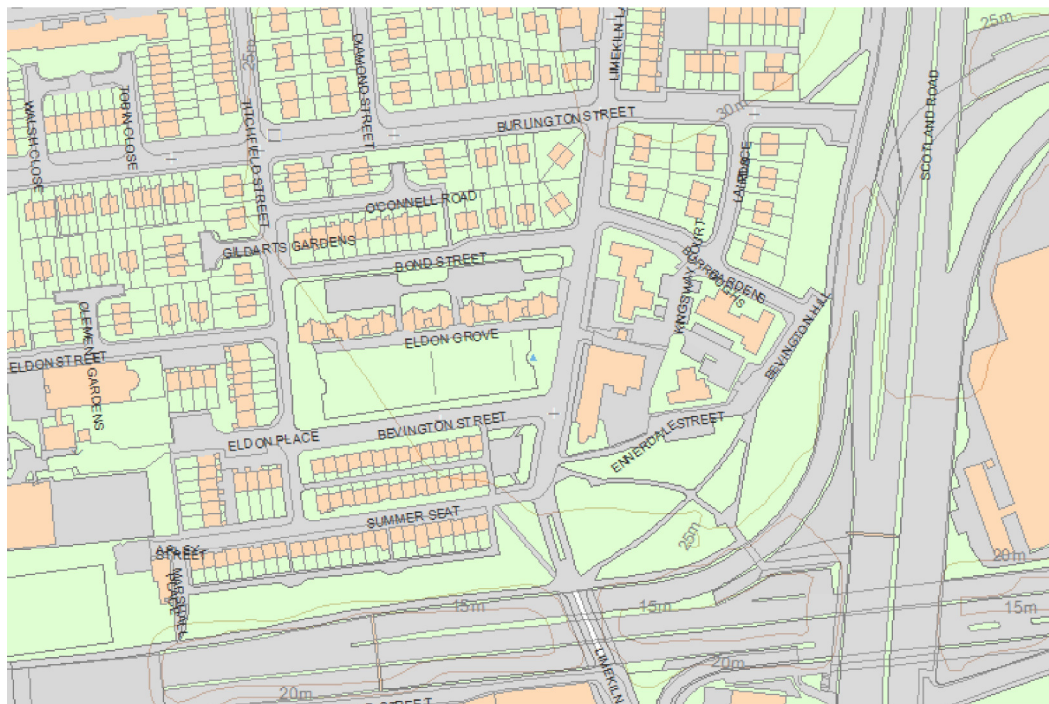
Listing NGR: SJ3465191656

Selected Sources

Legacy Record - This information may be included in the List Entry Details

National Grid Reference: SJ3465191656

Map



© Crown Copyright and database right 2016. All rights reserved. Ordnance Survey Licence number 100024900.
 © British Crown and SeaZone Solutions Limited 2016. All rights reserved. Licence number 102006.006.

The above map is for quick reference purposes only and may not be to scale.
 For a copy of the full scale map, please see the attached PDF - [1346277 .pdf](#)
http://gisservices.HistoricEngland.org.uk/printwebservice/hle/StatutoryPrint.svc/313330/HLE_A4L_Grade/HLE_A3L_Grade.pdf

The PDF will be generated from our live systems and may take a few minutes to download depending on how busy our servers are. We apologise for this delay.

This copy shows the entry on 29-Jan-2016 at 09:50:43.

Appendix 5: List Entry Description for the Roman Catholic Church of Our Lady of Reconciliation of De La Salette

ROMAN CATHOLIC CHURCH OF OUR LADY OF RECONCILIATION OF LA SALETTE

List Entry Summary

This building is listed under the Planning (Listed Buildings and Conservation Areas) Act 1990 as amended for its special architectural or historic interest.

Name: ROMAN CATHOLIC CHURCH OF OUR LADY OF RECONCILIATION OF LA SALETTE

List entry Number: 1068267

Location

ROMAN CATHOLIC CHURCH OF OUR LADY OF RECONCILIATION OF LA SALETTE, ELDON STREET

The building may lie within the boundary of more than one authority.

County:

District: Liverpool

District Type: Metropolitan Authority

Parish:

National Park: Not applicable to this List entry.

Grade: II

Date first listed: 14-Mar-1975

Date of most recent amendment: 19-Jun-1985

Legacy System Information

The contents of this record have been generated from a legacy data system.

Legacy System: LBS

UID: 214067

Asset Groupings

This list entry does not comprise part of an Asset Grouping. Asset Groupings are not part of the official record but are added later for information.

List entry Description

Summary of Building

Legacy Record - This information may be included in the List Entry Details.

Reasons for Designation

Legacy Record - This information may be included in the List Entry Details.

History

Legacy Record - This information may be included in the List Entry Details.

Details

SJ 3590 ELDON STREET L5

23/428 Roman Catholic Church of Our Lady of Reconciliation of La Salette (formerly listed 14.3.75 as Our Lady's Roman Catholic Church) - II

Catholic church. 1859-60. Edward Welby Pugin. Buff stone with red stone dressings, slate roof. Single vessel nave and chancel with rounded E end, aisles under leant-to roofs. Il-bay nave has sexfoil clerestory windows between flat buttresses. West end has shallow C20 porch with large wheel window over and canopied, louvred opening at top of gable. Octagonal bellcote has short spire and cusped lights. Aisle ends have sexfoil windows, other windows are lancets. Entrance at west end of north aisle has segmental head under pointed relieving arch; tympanum contains diocesan arms. Chancel has 9 cusped lancets and flat buttresses. Interior has pointed arcade on round stone columns; high timber roofs. Extensions to east of no interest.

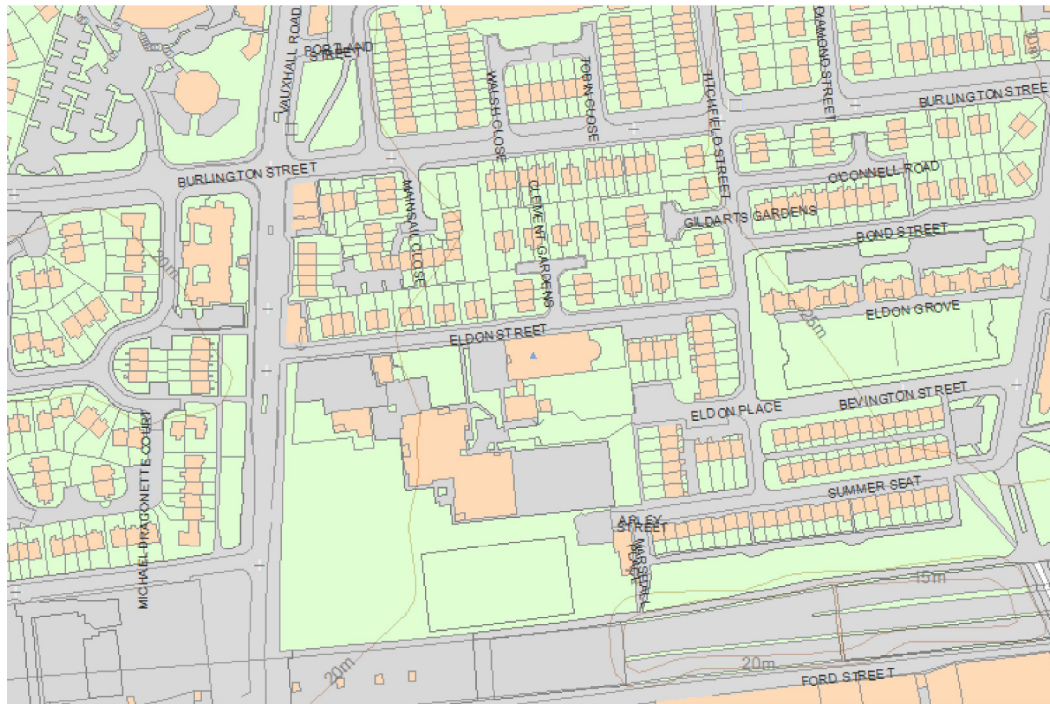
Listing NGR: SJ3443391643

Selected Sources

Legacy Record - This information may be included in the List Entry Details

National Grid Reference: SJ 34433 91643

Map



© Crown Copyright and database right 2016. All rights reserved. Ordnance Survey Licence number 100024900.
 © British Crown and SeaZone Solutions Limited 2016. All rights reserved. Licence number 102006.006.

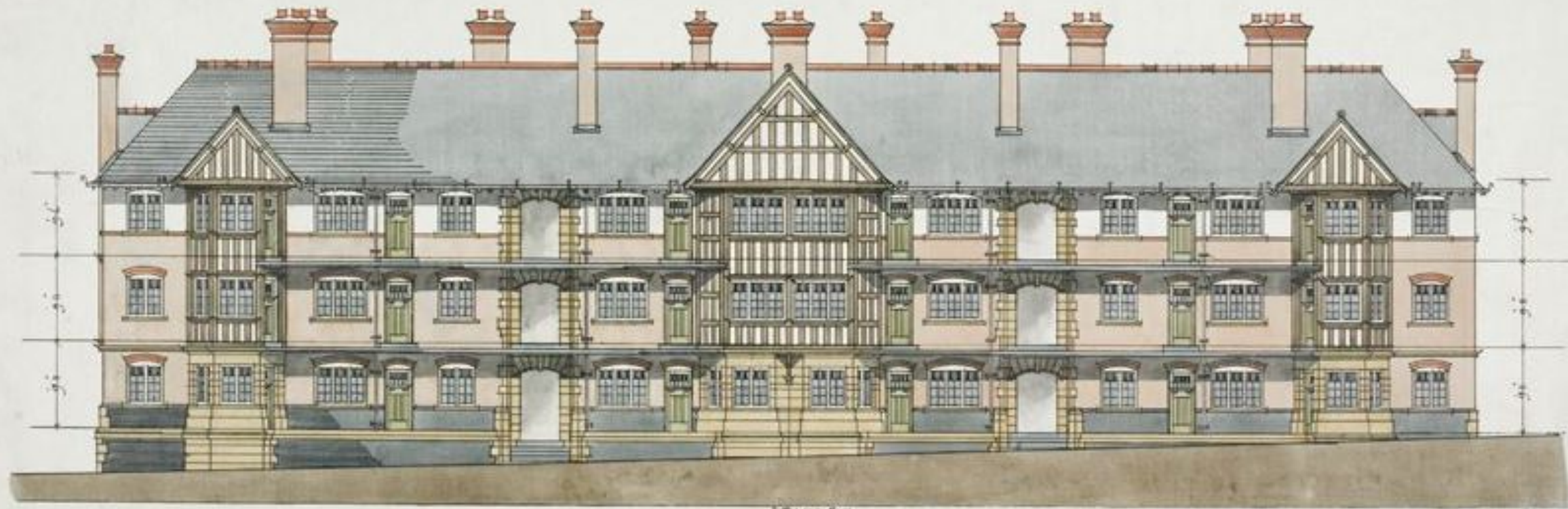
The above map is for quick reference purposes only and may not be to scale.
 For a copy of the full scale map, please see the attached PDF - [1068267 .pdf](#)
http://gisservices.HistoricEngland.org.uk/printwebservice/hle/StatutoryPrint.svc/406157/HLE_A4L_Grade/HLE_A3L_Grade.pdf

The PDF will be generated from our live systems and may take a few minutes to download depending on how busy our servers are. We apologise for this delay.

This copy shows the entry on 29-Jan-2016 at 09:49:57.

Appendix 6: Original Elevations for Eldon Grove

CITY: OF: LIVERPOOL
 DWELLINGS: BEVINGTON: ST: AREA
 BLOCKS: B, D, E & G



Width Line 100 ft

Note: The elevations to Blocks B and D are exactly similar except that the level of gateway is in the opposite direction to the drawing shown here.

FRONT ELEVATION TO BLOCKS "E" AND "G" (See Note above)



SCALE = ONE EIGHTH INCH TO ONE FOOT



