

General Notes:

1. No alteration is to be scaled from this drawing. All Contractors must dimension, and must report in writing or the specifications. The information supplied in this drawing or the specifications. The Contractor shall be responsible for the accuracy of the information supplied in this drawing or the specifications. The Contractor shall be responsible for the accuracy of the information supplied in this drawing or the specifications.
2. This drawing is to be read in conjunction with other related drawings. The Contractor shall be responsible for the accuracy of the information supplied in this drawing or the specifications. The Contractor shall be responsible for the accuracy of the information supplied in this drawing or the specifications.
3. Contractors to advise on suitability of all details and to ensure intended performance.
4. Contractors to ensure that all specified and implied materials, fixtures, manufacturers' recommendations. Contractor is responsible for obtaining all relevant manufacturers data and related information. The Contractor shall obtain further instructions from CBRE prior to proceeding.
5. Contractors to ensure all materials and construction complies with Building Regulations, CDM and CDM Regulations.
6. Contractors to ensure all aspects of the project programme and must provide satisfactory evidence to CBRE prior to proceeding.

**Copyright notice:**  
This drawing is the property of CBRE and all information and concepts both depicted and implied herein are the sole property of CBRE. Reproduction or transmission in any form is strictly forbidden without the prior written permission of CBRE. This drawing is based on the depicted information at any time or location not related to this project is strictly forbidden unless prior permission is obtained in writing from CBRE.

Rev	Date	Revision description	Int.
-----	------	----------------------	------

**CBRE**

CBRE Limited  
St Martins Court 110 Paternoster Row | London | EC4M 7HP  
T: 0207 182 2000 | F: 0207 182 3007 | W: www.cbre.com

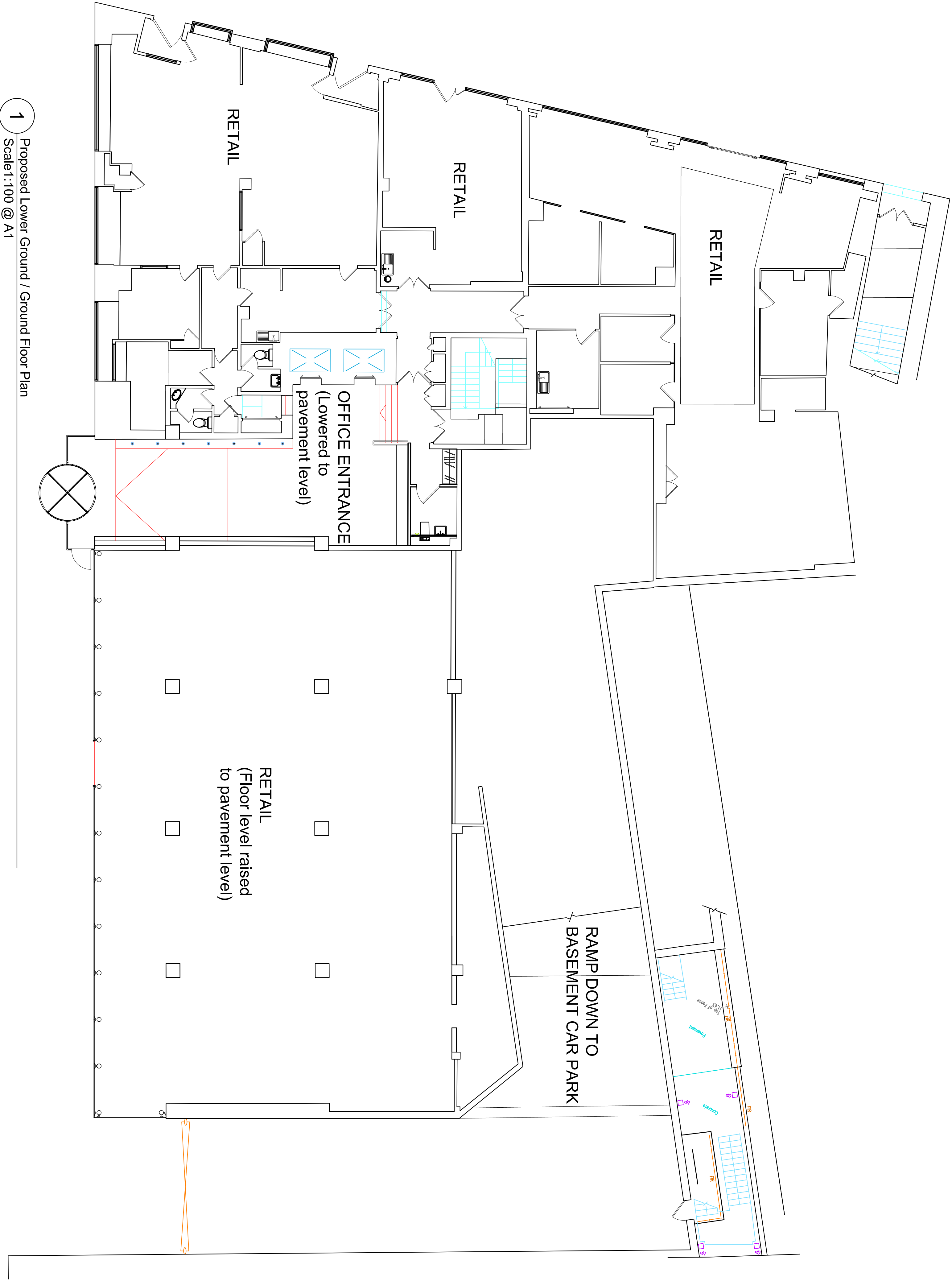
Project:  
**1 Old Hall Street**

Drawing:  
**Proposed  
Lower Ground Floor**

Scale:	Drawn:	Date:
1:100 @ A1	AP	21.12.15
Alternate Scale:	CMd:	Approved:
1:200 @ A3	MP	PTB

Status:  
**Planning**

Project No.:	Drawing No.:
TBA	APL.02



**1** Proposed Lower Ground / Ground Floor Plan  
Scale 1:100 @ A1