

KEY

Planning Application Boundary

SOFTWORKS

Note:
Refer to planting schedule for further information

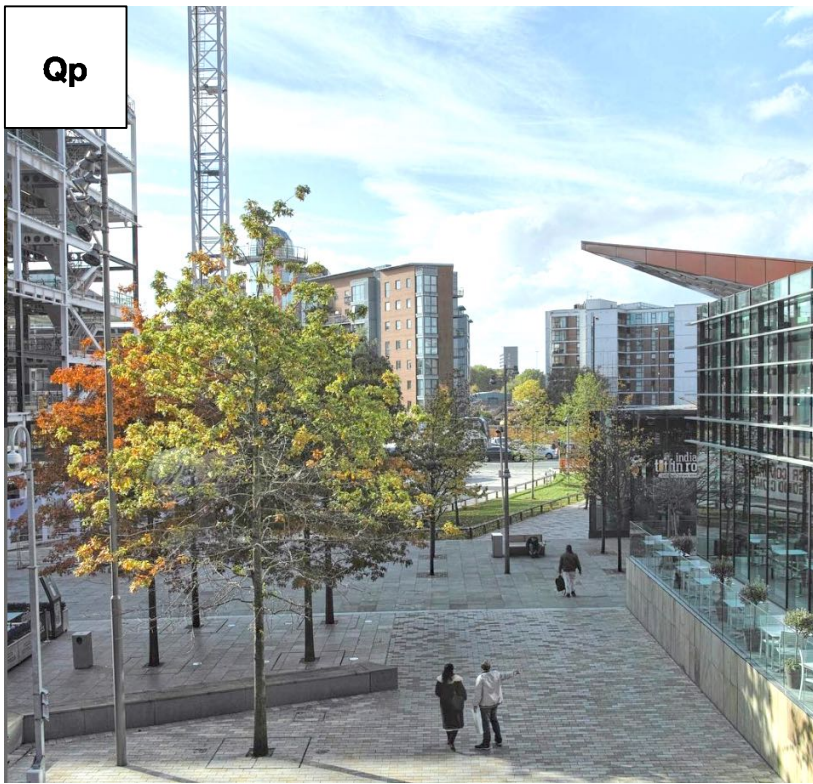
Deciduous Tree - Proposed
- Clearstem & multistem
- Typologies: Street, Ornamental, Feature

Evergreen Tree - Proposed

Planter
- Mix of ornamental, screening, groundcover and bulb species
- Moundings / contouring as shown (levels to be developed)

Hedge
- 1.2m Evergreen hedge to border adoptable footpath and provide screening.

TREES	Abbrev.	Species	Common name	Girth/Spacing	Height	Form	Container	Number	Typology
Evergreen									
	Pn A	Pinus nigra 'Austriaca'	Austrian Pine	n/a	450-500cm	Bushy with strong stems branching from base, leader and laterals, dense uniform canopy	Pot Grown	4	
Deciduous									
	PaT	Platanus acerifolia 'Tremonia'	Plane 'Tremonia'	30-35cm	n/a	Min. 2m Clearstem	Rootballed	3	Street Tree
	Qp	Quercus palustris	Pin Oak	60-65cm	n/a	Min. 2m Clearstem	Rootballed	1	Feature
	SaAI	Salix alba	White Ash	n/a	3.5-4m	Multistem, Min. 5 leaders from base	Pot Grown	2	Multistem
	SoAu	Sorbus aucuparia	Rowan	n/a	3-3.5m	Multistem, Min. 5 leaders from base	Pot Grown	2	Multistem
Hedge									
	Tb	Taxus baccata	English Yew	3/Linear Meter	1.2-1.4m		Rootballed		
ORNAMENTAL PLANTING									
	Species	Common Name	Pot	Density m/2	Number				
	Choisya ternata	Mexican orange	5L	3	X				
	Liriope muscari 'Monroe White'	Lilyturf 'Monroe White'	5L	5	X				
	Liriope muscari 'Royal Purple'	Lilyturf 'Royal Purple'	5L	5	X				
	Miscanthus sinensis 'Gracillimus'	Eulalia grass	5L	3	X				
	Pennisetum setaceum rubrum	Fountain grass	5L	3	X				
	Stipa tenuissima	Mexican feathergrass	5L	3	X				
	Vinca minor gertrude jekyll	Small white periwinkle 'Gertrude Jekyll'	5L	5	X				



THIS DRAWING IS COPYRIGHT PROTECTED AND MAY NOT BE REPRODUCED IN WHOLE OR PART WITHOUT WRITTEN AUTHORITY FROM THE OWNER.

NOTE:

- Do not scale from this drawing. Always work to noted dimensions.
- All dimensions are in millimetres unless otherwise stated.
- All setting out, levels and dimensions to be agreed on site.
- The dimensions of all materials must be checked on site before being laid out.
- This drawing must be read with the relevant specification clauses and detail drawings.
- Order of construction and setting out to be agreed on site.

Plant Intelligent Environments LLP

E: info@plant-ie.com W: plant-ie.com

MANCHESTER
2 Back Grafton St
Altrincham
WA14 1DY
T: 0161 928 9281

LONDON
18 Bowling Green Lane
London
EC1R 0BW
T: 0207 253 5678

Client 122 Old Hall Street Ltd

Project Ovatus One Liverpool

Drg Title Softworks Phase 1

Created on 24.10.16 **Created by** JT **Approved by** MW

Scale 1:200 **Size** A1 **Status** Planning

Drg No. PL1662-GA-120 **ISSUE 01**