

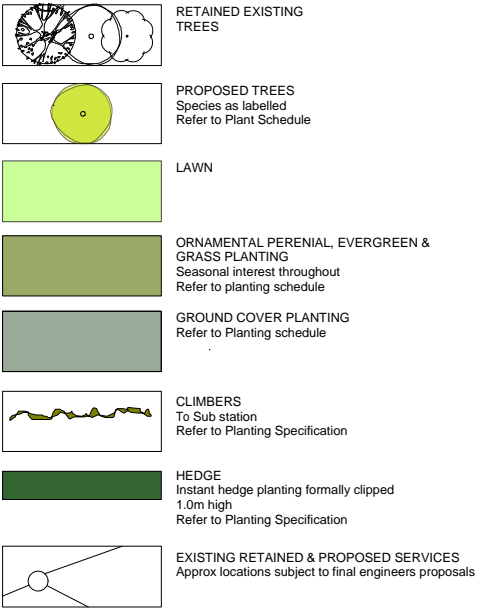
Planting Notes:	
1. Plant handling at the nursery, and during transit up to delivery , shall be in accordance with 'Plant Handling' the booklet published by the Committee for Plant Supply and Establishment (CPSE). The contractor shall comply with clauses 3 & 4 of the above booklet (obtained from the Horticulture Trades Association) which refers to the receipt, unloading and temporary storage of plants.	
2. Plants shall be first class examples of their species or variety, free from all pests and diseases with good fibrous root systems and materially undamaged. (Refer to relevant sections of BS3936 Parts 1-4 'Specification of Nursery Stock')	
3. All planting is to be in general compliance with BS4428: 1989 'Code of Practice for general landscape operations (excluding hard surfaces)'.	
4. All trees are to be staked and secured as followed: i) All semi mature trees are to be underground guyed, detail to be confirmed. ii) All Extra Heavy standard trees are to be double staked to 750mm above ground and secured using a single rubber tie. Detail to be confirmed	
5. One number 80litre bag of tree planting compost (non peat based) is to be incorporated into two EHS tree pits or 4 Sel Std tree pits. Compost must be thoroughly mixed with with excavated (or imported) topsoil. Trees shall be planted in tree pits large enough to accommodate tree roots when fully spread.	
6. Trees planted in grass are to have a 500mm diameter clear zone to the base and are to be mulched to a depth of 50mm with approved medium grade tree bark.	
7. The contractor must ascertain for himself the exact location of any underground services and maintenance points.	
8. All seeding, turfing and planting is to be implemented into ground prepared by the main contractor. All hedgerow whips and understorey whip planting are to be pit planted and backfilled with P4 Water Retaining Polymer and Enmag slow release fertiliser. Rates of application to Manufacturers recommendations.	
9. Water as necessary to ensure the establishment and continued thriving of planted and grassed matter.	
10. Carry out all work when soil and weather conditions are suitable: i) Do not plant during periods of frost or strong winds. Plant only during the following periods - Bare root deciduous trees and shrubs: Late October to late March - Container grown plants: At any time if ground water and weather conditions are favourable. Ensure that adequate watering and weed control is available.	
11. All areas of ornamental shrub planting & hedging are to be mulched to a consolidated depth of 75mm using an approved amenity grade bark mulch.	

Maintenance Notes:	
1. Maintenance is to be carried out on a monthly basis (12nr annual visits) At each visit the following operations are to be carried out: a- Check and firm all planted material including tree stakes and ties. Adjust any ties that are loose or rubbing. Tree stakes are to be removed following the second growing season following establishment. Also check materials after stormy or windy conditions. b- Check for pests and diseases and treat appropriately c- Remove all weeds and unwanted material via a combination of chemical and hand weeding operations to maintain a 1m clear area around each whip. d- Pick up all litter and remove all arisings from site e- Sweep all paths and roadways and dispose off site f- Remove any dead material from site g- Mow all seeded and turfed areas to a height of 50mm for the first cut following sowing and 20mm for each cut thereafter (15 cuts annually - Fortnightly during the growing season. No cuts between Nov - March) h- Water as necessary to ensure the continuing health of all plants and grass	
2. Carry out the following operations every 6 months: a- Apply an approved fertilizer (non residual) to all planted material during spring and autumn b- Apply an approved fertilizer to low maintenance grass areas during spring and autumn c- Clip hedges to achieve the mature height of 1.2m. Leader growth to be left until this height is achieved and then lateral growth promoted.	
3. Carry out the following operations annually: a- During autumn or following flowering prune all shrub material in accordance with good horticultural practice b- Check all tree stock and carry out any necessary pruning (in accordance with good horticultural practice) to remove dead, dying, diseased or dangerous limbs or to achieve a balanced crown. c- Top up all areas of bark mulch to a consolidated depth of 50mm d- Replace any material which has failed over the previous 12 months. All replacements are to be of equal specification as the original and the replacements schedule is to be agreed with the CA prior to implementation. Any deviation from the species list must be agreed with the CA. e- Edge all grassed areas adjacent to hard standing, shrub beds and around trees in grass during spring	


Workmanship and Maintenance Generally	
All works will be subject to the following British Standards :- - B.S. 4428 : 1969 : General Landscape Operations - B.S. 3936 : Part 1 : 1980 : Specification for Trees and Shrubs - B.S. 3936 : Part 10: 1981 : Specification for Ground Covers - B.S. 5837 : 2012 : Trees in Relation to Construction	

THIS DRAWING IS COPYRIGHT PROTECTED AND MAY NOT BE REPRODUCED IN WHOLE OR PART WITHOUT WRITTEN AUTHORITY FROM THE OWNER.

- NOTE:**
- Do not scale from this drawing.
 - Always work to noted dimensions.
 - All dimensions are in millimetres unless otherwise stated.
 - All setting out, levels and dimensions to be agreed on site.
 - The dimensions of all materials must be checked on site before being laid out.
 - This drawing must be read with the relevant specification clauses and detail drawings.
 - Order of construction and setting out to be agreed on site.



Issue	Date	Status	Drawn	Appr'd
06	02/02/16	Planters amend to steps	RM	RM
05	22/01/16	Architects Base updated.	RM	RM
04	26/11/15	Basement access incorporated	RM	RM
03	24/11/15	Cycle lane amended, near cycle store area amended	RM	RM
02	24/07/15	Planting to frontage amended, services overlaid	RM	RM
01	29/06/15	Design Amends	SF	DL
		For Comment	RB	DL



Planit Intelligent Environments LLP

E: info@planit-ie.com W: planit-ie.com

MANCHESTER

2 Back Grafton St
Altrincham
WA14 1DY
T: 0161 928 9281

LONDON

18 Bowling Green Lane
London
EC1R 0BW
T: 0207 253 5678

Client	Jamworks		
Project	Bevington Bush		
Drg Title	Bevington Bush Softwareworks		
Created on	Created by	Approved by	
30/04/2015	RB	DL	
Scale	Size	Status	
1:250	A1	FOR PLANNING	
Drg No.	Issue		
PL1488.GA.003	06		