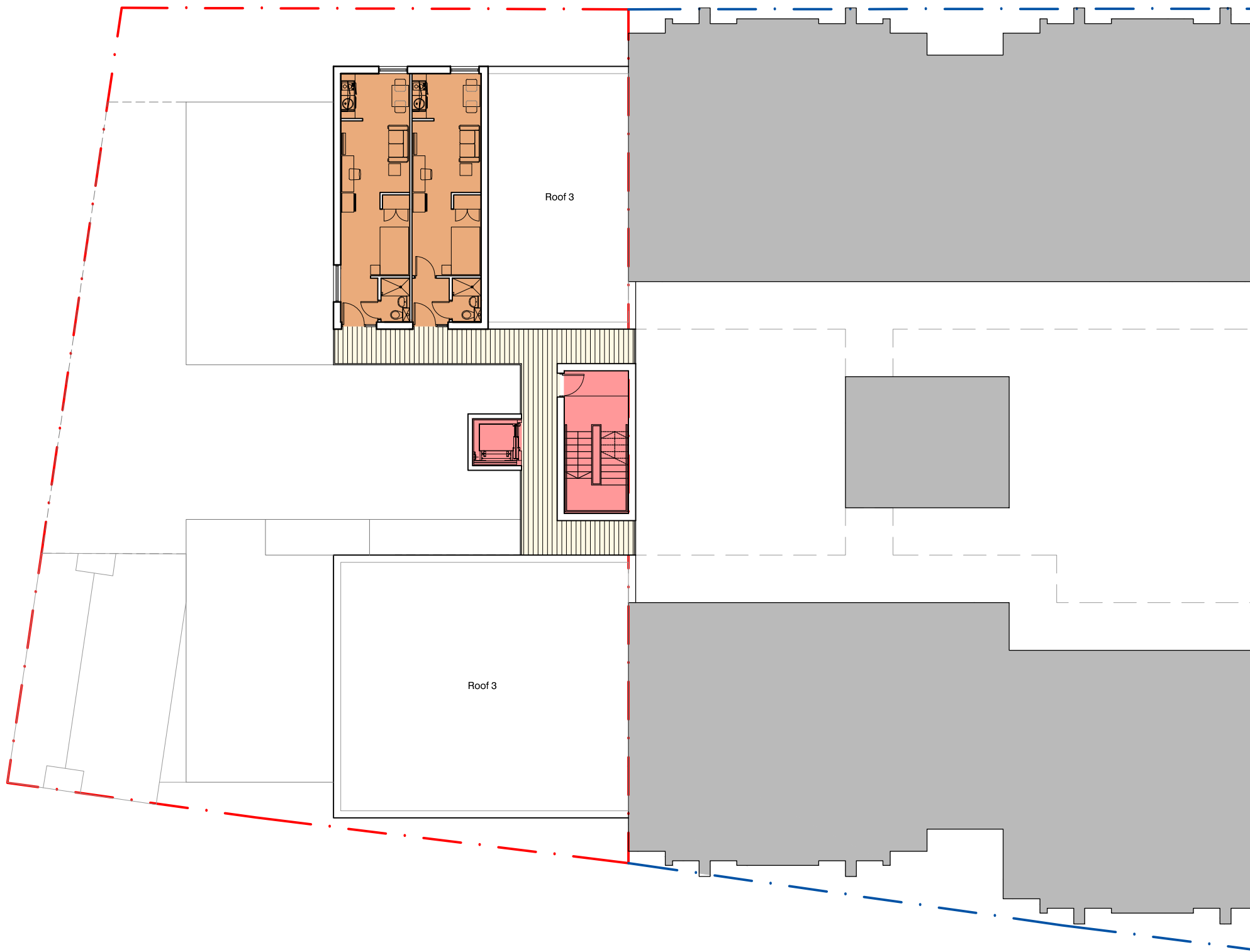




SEVENTH FLOOR PLAN



EIGHTH FLOOR PLAN

KEY

STUDIOS

DECK ACCESS / AMENITY SPACE

CIRCULATION

NOTES

1. This drawing is copyright of BLOK architecture Ltd

2. Do not scale from this drawing

3. Use figured dimensions only

A	22.04.15	Design update. Addition of studios to existing 3 bed clusters.	TL	PJM
rev.	date		dm	aud
drawing status				

PLANNING

Second Floor

Edward Pavilion

Albert Dock

Liverpool

L3 4AF

0151 658 0200

info@blokarchitecture.co.uk

www.blokarchitecture.co.uk

Client

PHD1

Job title

NORFOLK STREET PHASE 3 - CITY SHEDS

Drawing title

SEVENTH AND EIGHTH FLOOR PLANS

Scale	Down	Checked	Date
1:200 @ A1	TL	PJM	27.03.2015
1:500 @ A2	TL	PJM	27.03.2015
1:1000 @ A3	TL	PJM	27.03.2015
1:1500 @ A4	TL	PJM	27.03.2015
1:2000 @ A5	TL	PJM	27.03.2015
1:2500 @ A6	TL	PJM	27.03.2015
1:3000 @ A7	TL	PJM	27.03.2015
1:3500 @ A8	TL	PJM	27.03.2015
1:4000 @ A9	TL	PJM	27.03.2015
1:4500 @ A10	TL	PJM	27.03.2015
1:5000 @ A11	TL	PJM	27.03.2015
1:5500 @ A12	TL	PJM	27.03.2015
1:6000 @ A13	TL	PJM	27.03.2015
1:6500 @ A14	TL	PJM	27.03.2015
1:7000 @ A15	TL	PJM	27.03.2015
1:7500 @ A16	TL	PJM	27.03.2015
1:8000 @ A17	TL	PJM	27.03.2015
1:8500 @ A18	TL	PJM	27.03.2015
1:9000 @ A19	TL	PJM	27.03.2015
1:9500 @ A20	TL	PJM	27.03.2015
1:10000 @ A21	TL	PJM	27.03.2015
1:11000 @ A22	TL	PJM	27.03.2015
1:12000 @ A23	TL	PJM	27.03.2015
1:13000 @ A24	TL	PJM	27.03.2015
1:14000 @ A25	TL	PJM	27.03.2015
1:15000 @ A26	TL	PJM	27.03.2015
1:16000 @ A27	TL	PJM	27.03.2015
1:17000 @ A28	TL	PJM	27.03.2015
1:18000 @ A29	TL	PJM	27.03.2015
1:19000 @ A30	TL	PJM	27.03.2015
1:20000 @ A31	TL	PJM	27.03.2015
1:22000 @ A32	TL	PJM	27.03.2015
1:24000 @ A33	TL	PJM	27.03.2015
1:26000 @ A34	TL	PJM	27.03.2015
1:28000 @ A35	TL	PJM	27.03.2015
1:30000 @ A36	TL	PJM	27.03.2015
1:32000 @ A37	TL	PJM	27.03.2015
1:34000 @ A38	TL	PJM	27.03.2015
1:36000 @ A39	TL	PJM	27.03.2015
1:38000 @ A40	TL	PJM	27.03.2015
1:40000 @ A41	TL	PJM	27.03.2015
1:42000 @ A42	TL	PJM	27.03.2015
1:44000 @ A43	TL	PJM	27.03.2015
1:46000 @ A44	TL	PJM	27.03.2015
1:48000 @ A45	TL	PJM	27.03.2015
1:50000 @ A46	TL	PJM	27.03.2015
1:52000 @ A47	TL	PJM	27.03.2015
1:54000 @ A48	TL	PJM	27.03.2015
1:56000 @ A49	TL	PJM	27.03.2015
1:58000 @ A50	TL	PJM	27.03.2015
1:60000 @ A51	TL	PJM	27.03.2015
1:62000 @ A52	TL	PJM	27.03.2015
1:64000 @ A53	TL	PJM	27.03.2015
1:66000 @ A54	TL	PJM	27.03.2015
1:68000 @ A55	TL	PJM	27.03.2015
1:70000 @ A56	TL	PJM	27.03.2015
1:72000 @ A57	TL	PJM	27.03.2015
1:74000 @ A58	TL	PJM	27.03.2015
1:76000 @ A59	TL	PJM	27.03.2015
1:78000 @ A60	TL	PJM	27.03.2015
1:80000 @ A61	TL	PJM	27.03.2015
1:82000 @ A62	TL	PJM	27.03.2015
1:84000 @ A63	TL	PJM	27.03.2015
1:86000 @ A64	TL	PJM	27.03.2015
1:88000 @ A65	TL	PJM	27.03.2015
1:90000 @ A66	TL	PJM	27.03.2015
1:92000 @ A67	TL	PJM	27.03.2015
1:94000 @ A68	TL	PJM	27.03.2015
1:96000 @ A69	TL	PJM	27.03.2015
1:98000 @ A70	TL	PJM	27.03.2015
1:100000 @ A71	TL	PJM	27.03.2015
1:110000 @ A72	TL	PJM	27.03.2015
1:120000 @ A73	TL	PJM	27.03.2015
1:130000 @ A74	TL	PJM	27.03.2015
1:140000 @ A75	TL	PJM	27.03.2015
1:150000 @ A76	TL	PJM	27.03.2015
1:160000 @ A77	TL	PJM	27.03.2015
1:170000 @ A78	TL	PJM	27.03.2015
1:180000 @ A79	TL	PJM	27.03.2015
1:190000 @ A80	TL	PJM	27.03.2015
1:200000 @ A81	TL	PJM	27.03.2015
1:220000 @ A82	TL	PJM	27.03.2015
1:240000 @ A83	TL	PJM	27.03.2015
1:260000 @ A84	TL	PJM	27.03.2015
1:280000 @ A85	TL	PJM	27.03.2015
1:300000 @ A86	TL	PJM	27.03.2015
1:320000 @ A87	TL	PJM	27.03.2015
1:340000 @ A88	TL	PJM	27.03.2015
1:360000 @ A89	TL	PJM	27.03.2015
1:380000 @ A90	TL	PJM	27.03.2015
1:400000 @ A91	TL	PJM	27.03.2015
1:420000 @ A92	TL	PJM	27.03.2015
1:440000 @ A93	TL	PJM	27.03.2015
1:460000 @ A94	TL	PJM	27.03.2015
1:480000 @ A95	TL	PJM	27.03.2015
1:500000 @ A96	TL	PJM	27.03.2015
1:520000 @ A97	TL	PJM	27.03.2015
1:540000 @ A98	TL	PJM	27.03.2015
1:560000 @ A99	TL	PJM	27.03.2015
1:580000 @ A100	TL	PJM	27.03.2015
1:600000 @ A101	TL	PJM	27.03.2015
1:620000 @ A102	TL	PJM	27.03.2015
1:640000 @ A103	TL	PJM	27.03.2015
1:660000 @ A104	TL	PJM	27.03.2015
1:680000 @ A105	TL	PJM	27.03.2015
1:700000 @ A106	TL	PJM	27.03.2015
1:720000 @ A107	TL	PJM	27.03.2015
1:740000 @ A108	TL	PJM	27.03.2015
1:760000 @ A109	TL	PJM	27.03.2015
1:780000 @ A110	TL	PJM	27.03.2015
1:800000 @ A111	TL	PJM	27.03.2015
1:820000 @ A112	TL	PJM	27.03.2015
1:840000 @ A113	TL	PJM	27.03.2015
1:860000 @ A114	TL	PJM	27.03.2015
1:880000 @ A115	TL	PJM	27.03.2015
1:900000 @ A116	TL	PJM	27.03.2015
1:920000 @ A117	TL	PJM	27.03.2015
1:940000 @ A118	TL	PJM	27.03.2015
1:960000 @ A119	TL	PJM	27.03.2015
1:980000 @ A120	TL	PJM	27.03.2015
1:1000000 @ A121	TL	PJM	27.03.2015
1:1100000 @ A122	TL	PJM	27.03.2015
1:1200000 @ A123	TL	PJM	27.03.2015
1:1300000 @ A124	TL	PJM	27.03.2015
1:1400000 @ A125	TL	PJM	27.03.2015
1:1500000 @ A126	TL	PJM	27.03.2015
1:1600000 @ A127	TL	PJM	27.03.2015
1:1700000 @ A128	TL	PJM	27.03.2015
1:1800000 @ A129	TL	PJM	27.03.2015
1:1900000 @ A130	TL	PJM	27.03.2015
1:2000000 @ A131	TL	PJM	27.03.2015
1:2200000 @ A132	TL	PJM	27.03.2015
1:2400000 @ A133	TL	PJM	27.03.2015
1:2600000 @ A134	TL	PJM	27.03.2015
1:2800000 @ A135	TL	PJM	27.03.2015
1:3000000 @ A136	TL	PJM	27.03.2015
1:3200000 @ A137	TL	PJM	27.03.2015
1:3400000 @ A138	TL	PJM	27.03.2015
1:3600000 @ A139	TL	PJM	27.03.2015
1:3800000 @ A140	TL	PJM	27.03.2015
1:4000000 @ A141	TL	PJM	27.03.2015
1:4200000 @ A142	TL	PJM	27.03.2015
1:4400000 @ A143	TL	PJM	27.03.2015
1:4600000 @ A144	TL	PJM	27.03.2015
1:4800000 @ A145	TL	PJM	27.03.2015
1:5000000 @ A146	TL	PJM	27.03.2015
1:5200000 @ A147	TL	PJM	27.03.2015
1:5400000 @ A148	TL	PJM	27.03.2015
1:5600000 @ A149	TL	PJM	27.03.2015
1:5800000 @ A150	TL	PJM	27.03.2015
1:6000000 @ A151	TL	PJM	27.03.2015
1:6200000 @ A152	TL	PJM	27.03.2015
1:6400000 @ A153	TL	PJM	27.03.2015
1:6600000 @ A154	TL	PJM	27.03.2015
1:6800000 @ A155	TL	PJM	27.03.2015
1:7000000 @ A156	TL	PJM	27.03.2015
1:7200000 @ A157	TL	PJM	27.03.2015
1:7400000 @ A158	TL	PJM	27.03.2015
1:7600000 @ A159	TL	PJM	27.03.2015
1:7800000 @ A160	TL	PJM	27.03.2015
1:8000000 @ A161	TL	PJM	27.03.2015
1:8200000 @ A162	TL	PJM	27.03.2015
1:8400000 @ A163	TL	PJM	27.03.2015
1:8600000 @ A164	TL	PJM	27.03.2015
1:8800000 @ A165	TL	PJM	27.03.2015
1:9000000 @ A166	TL	PJM	27.03.2015
1:9200000 @ A167	TL	PJM	27.03.2015
1:9400000 @ A168	TL	PJM	27.03.2015
1:9600000 @ A169	TL	PJM	27.03.2015
1:9800000 @ A170	TL	PJM	27.03.2015
1:10000000 @ A171	TL	PJM	27.03.2015
1:11000000 @ A172	TL	PJM	27.03.2015
1:12000000 @ A173	TL	PJM	27.03.2015
1:13000000 @ A174	TL	PJM	27.03.2015
1:14000000 @ A175	TL	PJM	27.03.2015
1:15000000 @ A176	TL	PJM	27.03.2015
1:16000000 @ A177	TL	PJM	27.03.2015
1:17000000 @ A178	TL	PJM	27.03.2015
1:18000000 @ A179	TL	PJM	27.03.2015
1:19000000 @ A180	TL	PJM	27.03.2015
1:20000000 @ A181	TL	PJM	27.03.2015
1:22000000 @ A182	TL	PJM	27.03.2015
1:24000000 @ A183	TL	PJM	27.03.2015
1:26000000 @ A184	TL	PJM	27.03.2015
1:28000000 @ A185	TL	PJM	27.03.2015
1:30000000 @ A186	TL	PJM	27.03.2015
1:32000000 @ A187	TL	PJM	27.03.2015
1:34000000 @ A188	TL	PJM	27.03.2015
1:36000000 @ A189	TL	PJM	27.03.2015
1:38000000 @ A190	TL	PJM	27.03.2015
1:40000000 @ A191	TL	PJM	27.03.2015
1:42000000 @ A192	TL	PJM	27.03.2015
1:44000000 @ A193	TL	PJM	27.03.2015
1:46000000 @ A194	TL	PJM	27.03.2015
1:48000000 @ A195	TL	PJM	27.03.2015
1:50000000 @ A196	TL	PJM	27.03.2015
1:52000000 @ A197	TL	PJM	27.03.2015
1:54000000 @ A198	TL	PJM	27.03.2015
1:56000000 @ A199	TL	PJM	27.03.2015
1:58000000 @ A200	TL	PJM	27.03.2015
1:60000000 @ A201	TL	PJM	27.03.2015
1:62000000 @ A202	TL	PJM	27.03.2015
1:64000000 @ A203	TL	PJM	27.03.2015
1:66000000 @ A204	TL	PJM	27.03.2015
1:68000000 @ A205	TL	PJM	27.03.2015
1:70000000 @ A206	TL	PJM	27.03.2015
1:72000000 @ A207	TL	PJM	27.03.2015
1:74000000 @ A208	TL	PJM	27.03.2015
1:76000000 @ A209	TL	PJM	27.03.2015
1:78000000 @ A210	TL	PJM	27.03.2015
1:80000000 @ A211	TL	PJM	27.03.2015
1:82000000 @ A212	TL	PJM	27.03.2015
1:84000000 @ A213	TL	PJM	27.03.2015
1:86000000 @ A214	TL	PJM	27.03.2015
1:88000000 @ A215	TL	PJM	27.03.2015
1:90000000 @ A216	TL	PJM	27.03.2015
1:92000000 @ A217	TL	PJM	27.03.2015
1:94000000 @ A218	TL	PJM	27.03.2015
1:96000000 @ A219	TL	PJM	27.03.2015
1:98000000 @ A220	TL	PJM	27.03.2015
1:100000000 @ A221	TL	PJM	27.03.2015
1:110000000 @ A222	TL	PJM	27.03.2015
1:120000000 @ A223	TL	PJM	27.03.2015
1:130000000 @ A224	TL	PJM	27.03.2015
1:140000000 @ A225	TL	PJM	27.03.2015
1:150000000 @ A226	TL	PJM	27.03.2015
1:160000000 @ A227	TL	PJM	27.03.2015
1:170000000 @ A228	TL	PJM	27.03.2015
1:180000000 @ A229	TL	PJM	27.03.2015
1:190000000 @ A230	TL	PJM	27.03.2015
1:200000000 @ A231	TL	PJM	27.03.2015
1:220000000 @ A232	TL	PJM	27.03.2015
1:240000000 @ A233	TL	PJM	27.03.2015
1:260000000 @ A234	TL	PJM	27.03.2015
1:280000000 @ A235	TL	PJM	27.03.2015
1:300000000 @ A236	TL	PJM	27.03.2015
1:320000000 @ A237	TL	PJM	27.03.2015
1:340000000 @			