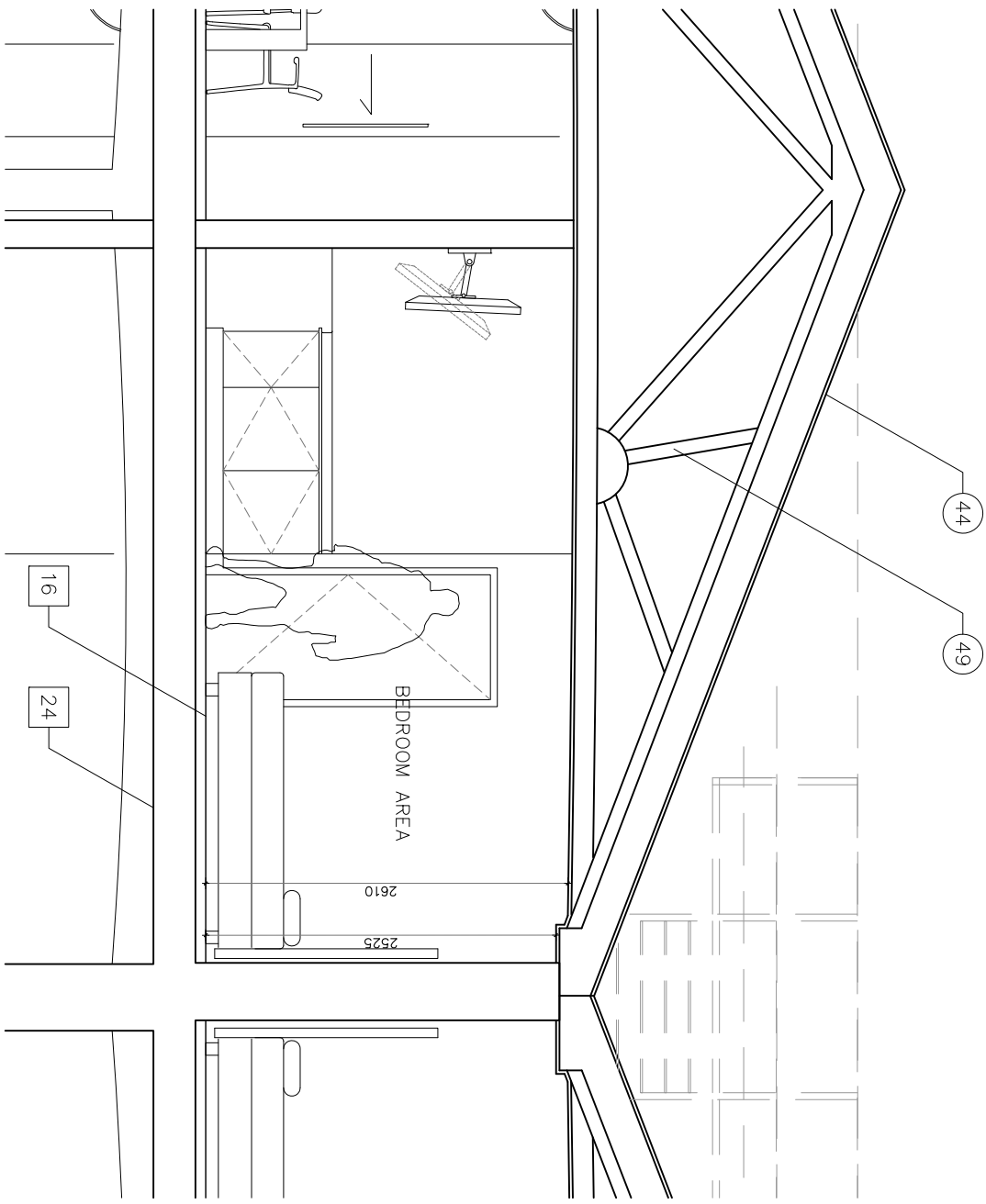
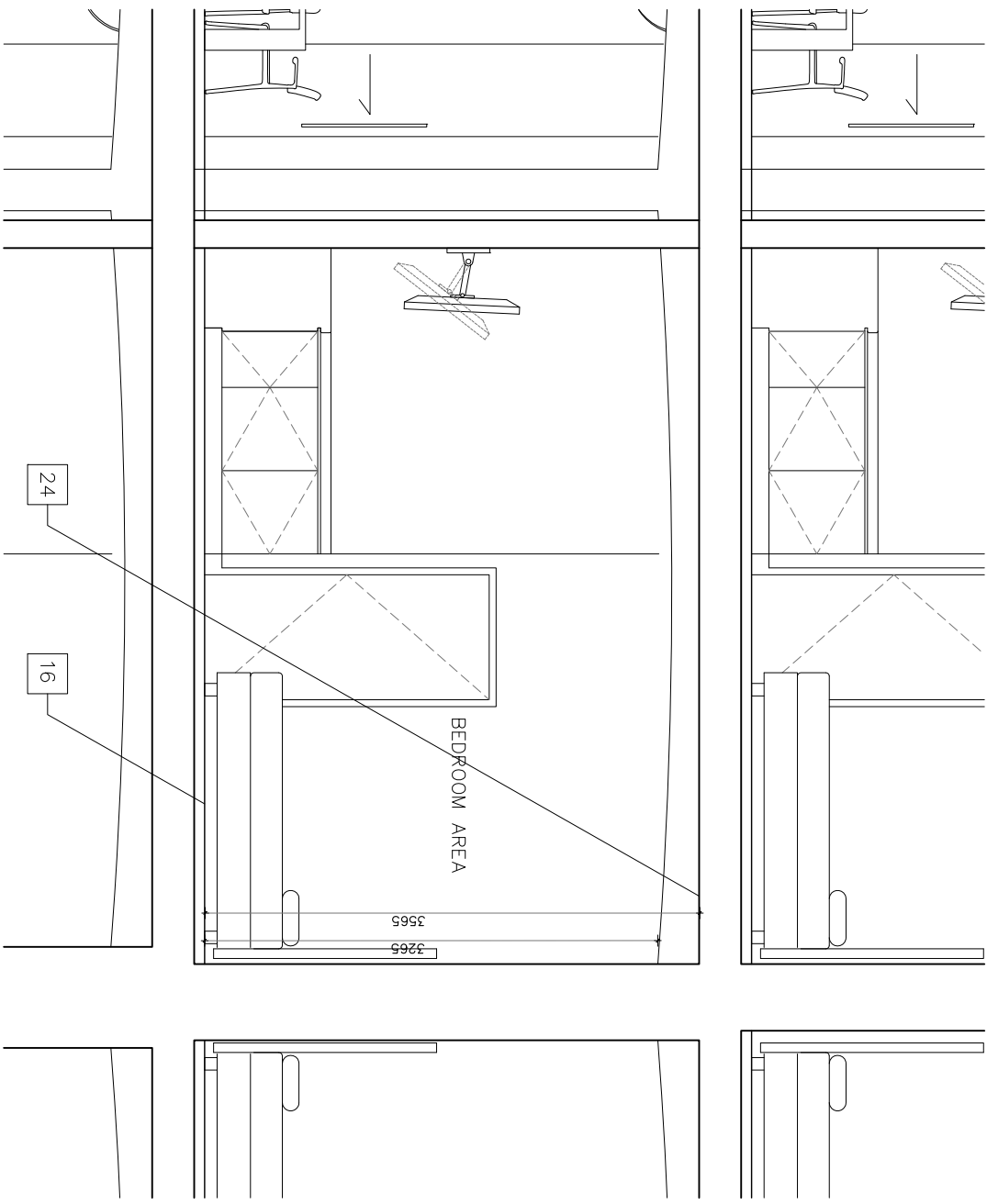


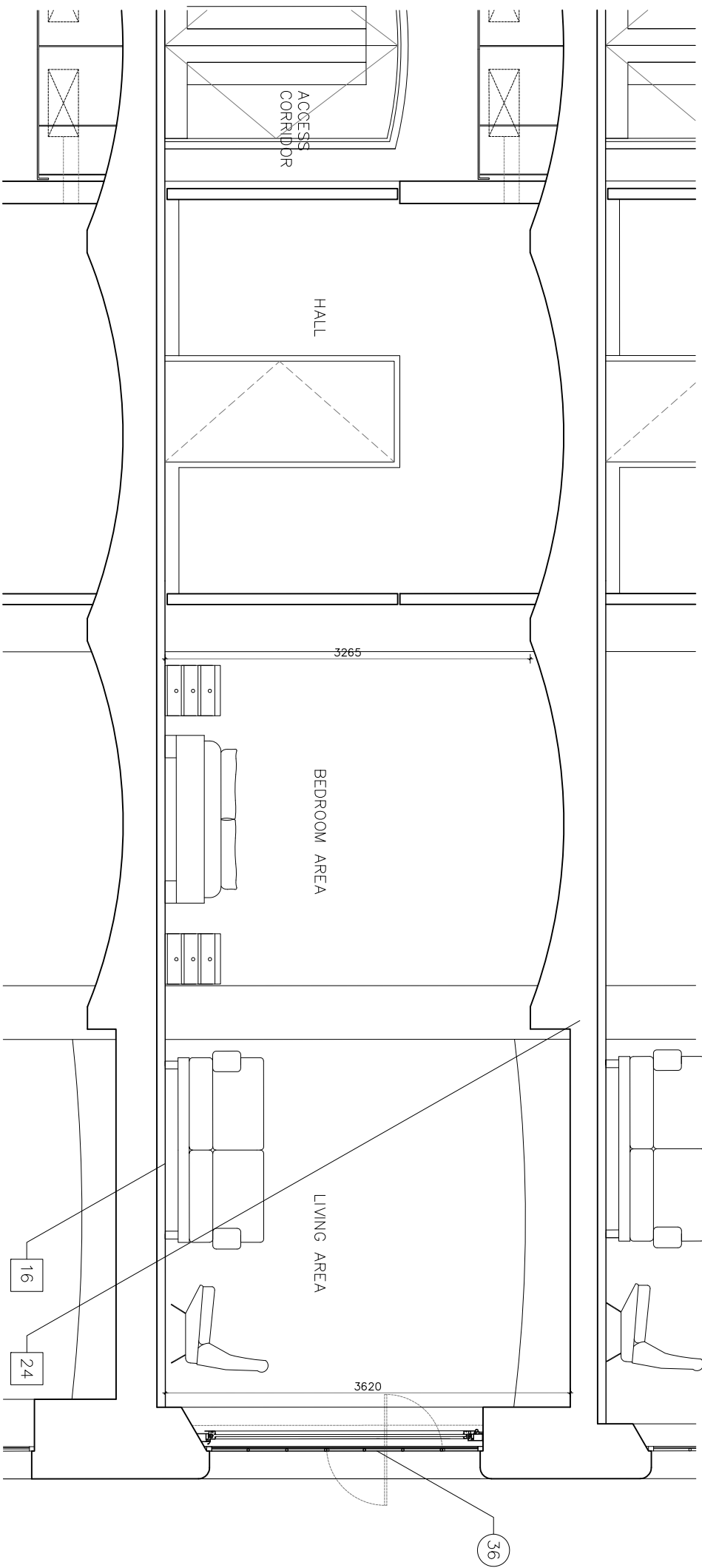
1 Typical Bedroom Type B - plan
PA2-401 1:50



2 Section AA (at fourth level)
PA2-401 1:50



3 Typical Section AA (at first level)
PA2-401 1:50



4 Section BB
PA2-401 1:50

South Warehouse
Typical Hotel Bedroom Type B
Area: 55sqm (592sqft)
Please note that areas will vary depending
on units position within the building

ISSUED FOR PLANNING ONLY, NOT FOR CONSTRUCTION

NOTES:
Do not scale from this drawing.
Any discrepancies found on site
must be reported to Darnody Architects
immediately.
Any discrepancies found on drawings
to be reported to Darnody Architects
immediately.
Refer to engineers drawings
for structural details.
All dimensions sized to blockwork.


Rev.	Description.	Date.	Initials.
XREF'S C/D REF.			

SITE KEY

DRAWING KEY

NORTH POINT

creative innovative flexible



darnody
architecture

91 Townsend Street, Dublin 2
353 1 672 9907
info@darnodyarchitecture.com
darnodyarchitecture.com

Rev. No.

Scale

Date

Dm. By

Cktd. By

Issue

1st

1:50 @ A1

21/10/2015

Nilla Burke

Tim Darnody

PLANNING

Project:
Proposed Works and Minor Amendments to LBC 14L/0253
& PP 14F/0249, South Warehouse, Stanley Dock, Liverpool

Title:
TYPICAL HOTEL ROOM TYPE B
SOUTHERN WAREHOUSE

Client:
Stanley Dock Properties Ltd.

Dwg. No.
PA2-401

Job No.
1031-2