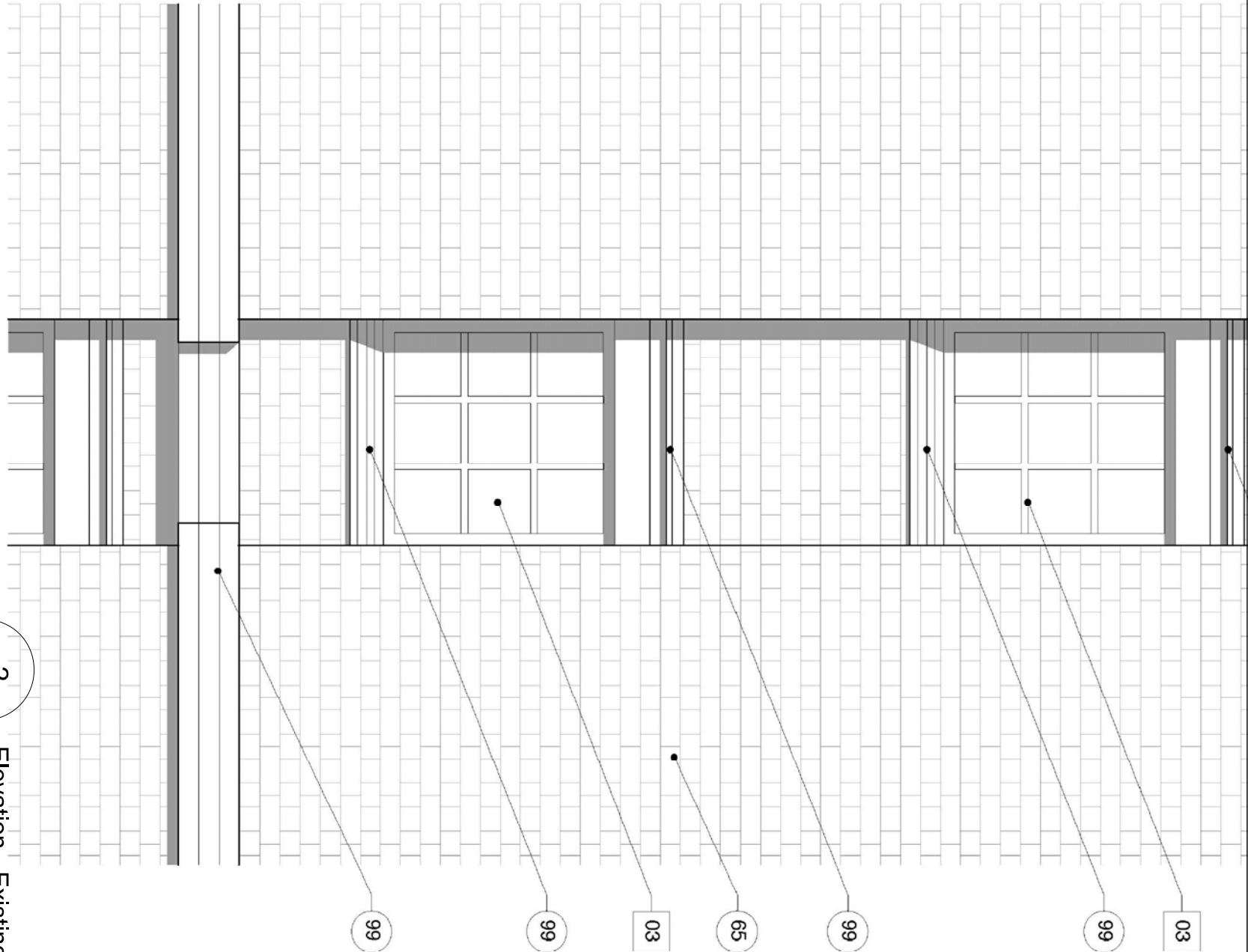
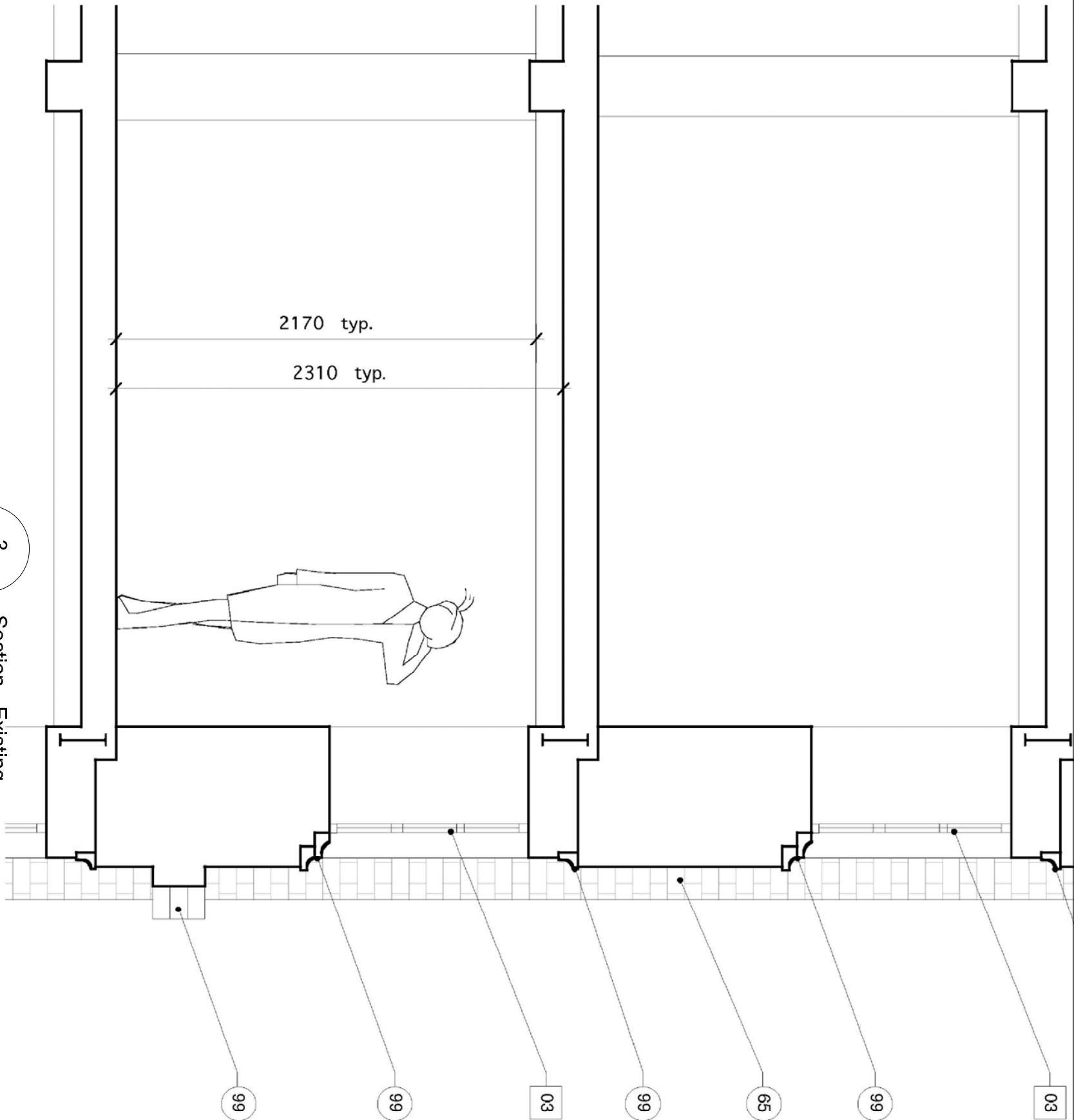


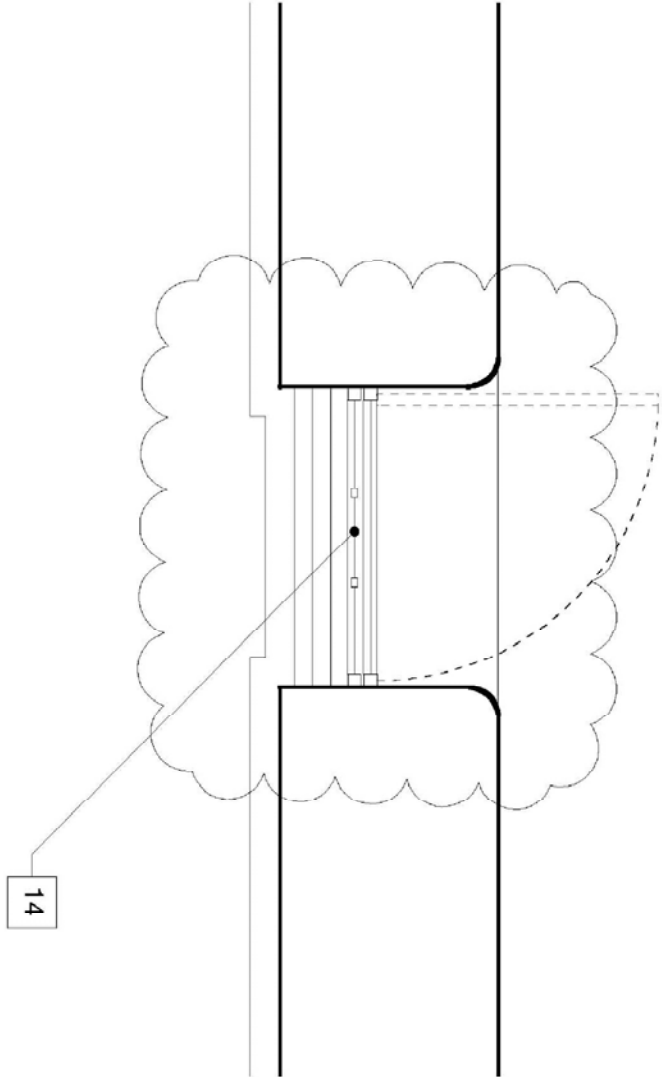
1 Plan - Existing
PA-413 1:25



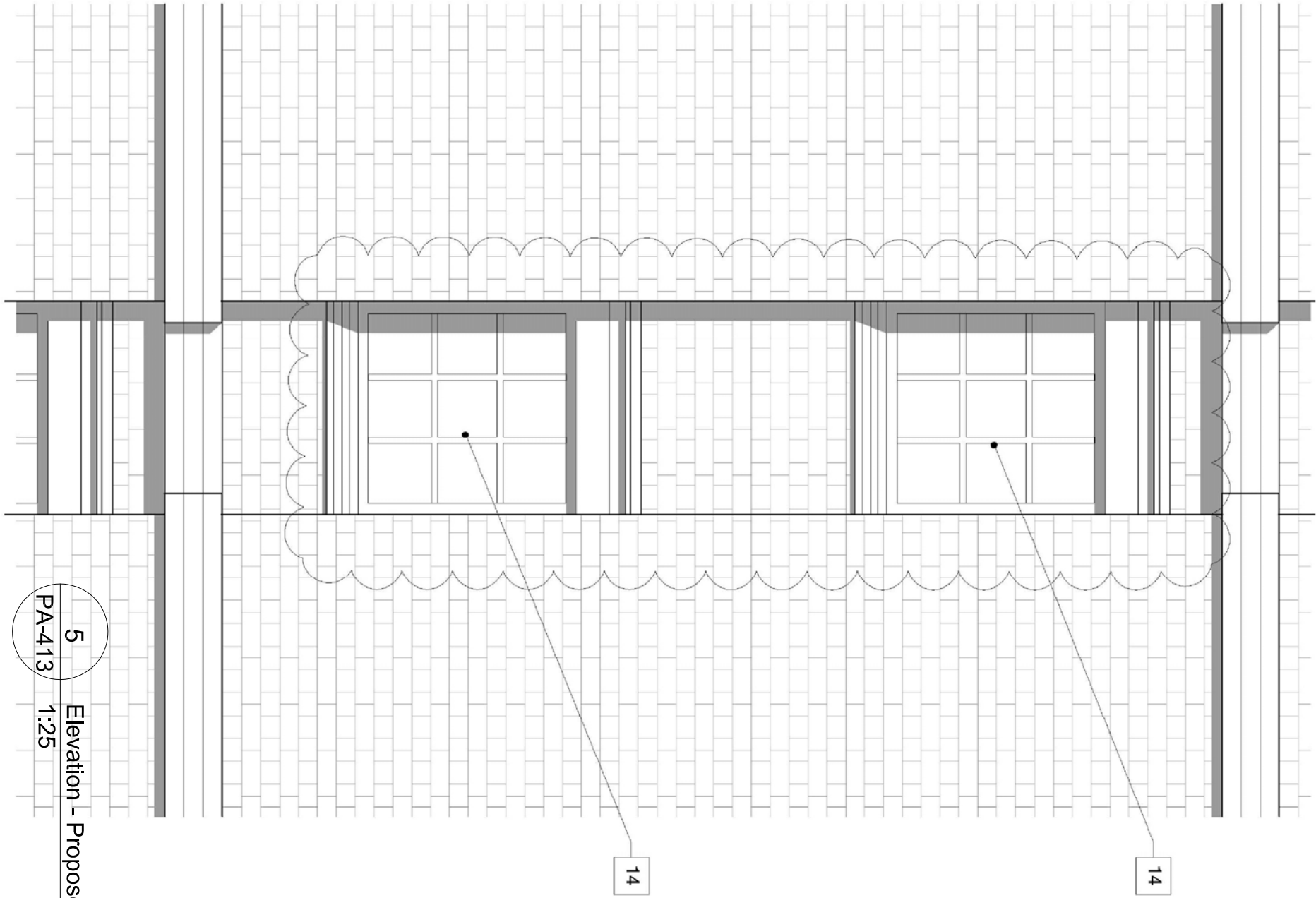
2 Elevation - Existing
PA-413 1:25



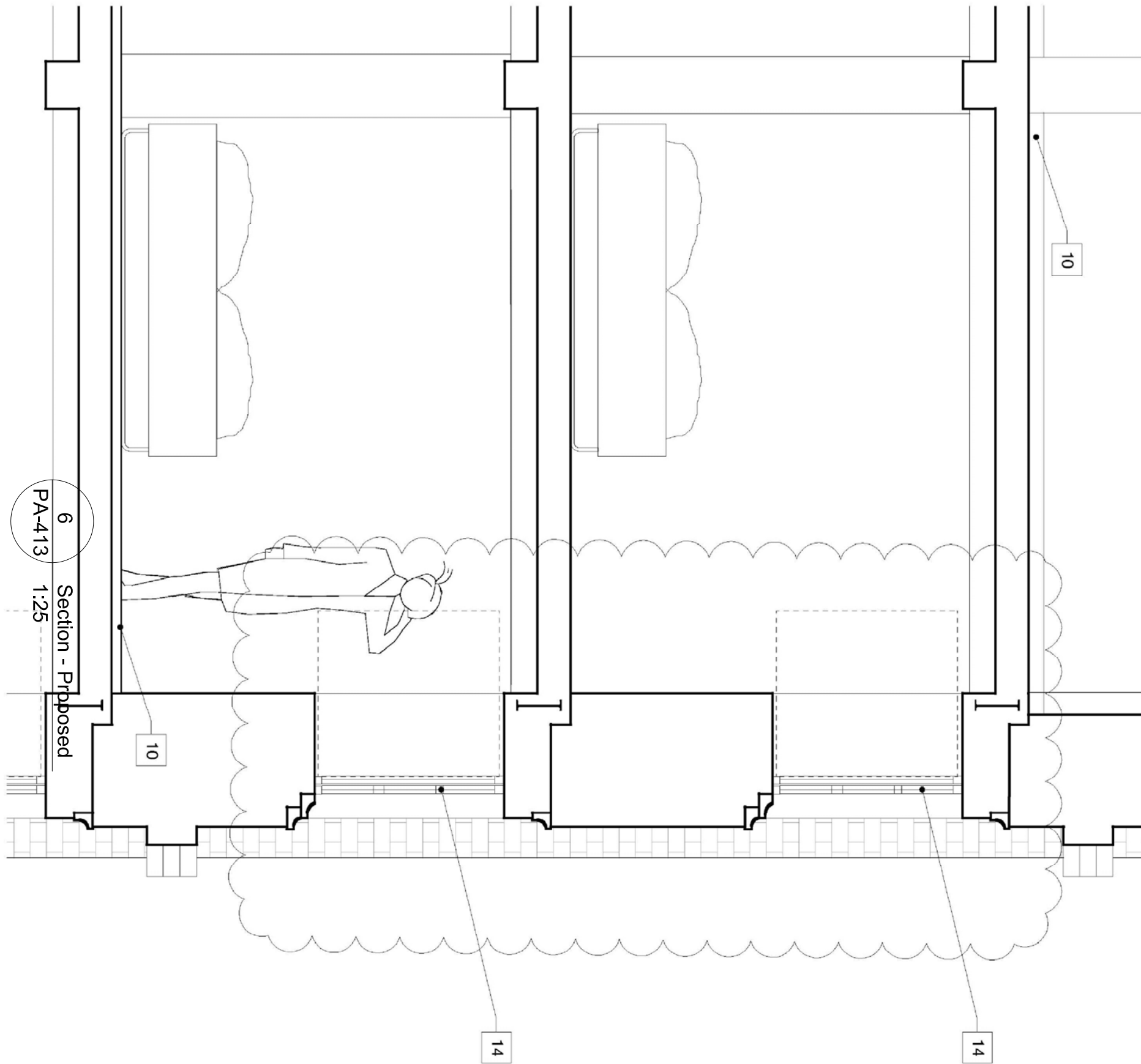
3 Section - Existing
PA-413 1:25



4 Plan - Proposed
PA-413 1:25




5 Elevation - Proposed
PA-413 1:25




6 Section - Proposed
PA-413 1:25


NOTES:
Do not scale from this drawing.
Any discrepancies found on site
to be reported to Darnody Architects
immediately.
Any discrepancies found on drawings
to be reported to Darnody Architects
immediately.
Refer to engineers drawings
for structural details.
All dimensions sized to blockwork.

Rev.	Description.	Date.	Initials.
XREF'S C&D REF.			

 creative innovative flexible

**darnody**
architecture

91 Townsend Street, Dublin 2
353 1 672 3907
info@darnodyarchitecture.com
darnodyarchitecture.com



Project.	Tobacco Warehouse at Stanley dock Stanley Dock, Liverpool	
Title.	WINDOW DETAIL NO. 3	
Client.	Stanley Dock Properties Ltd.	
Dwg. No.	PA-413	Job No. 1523