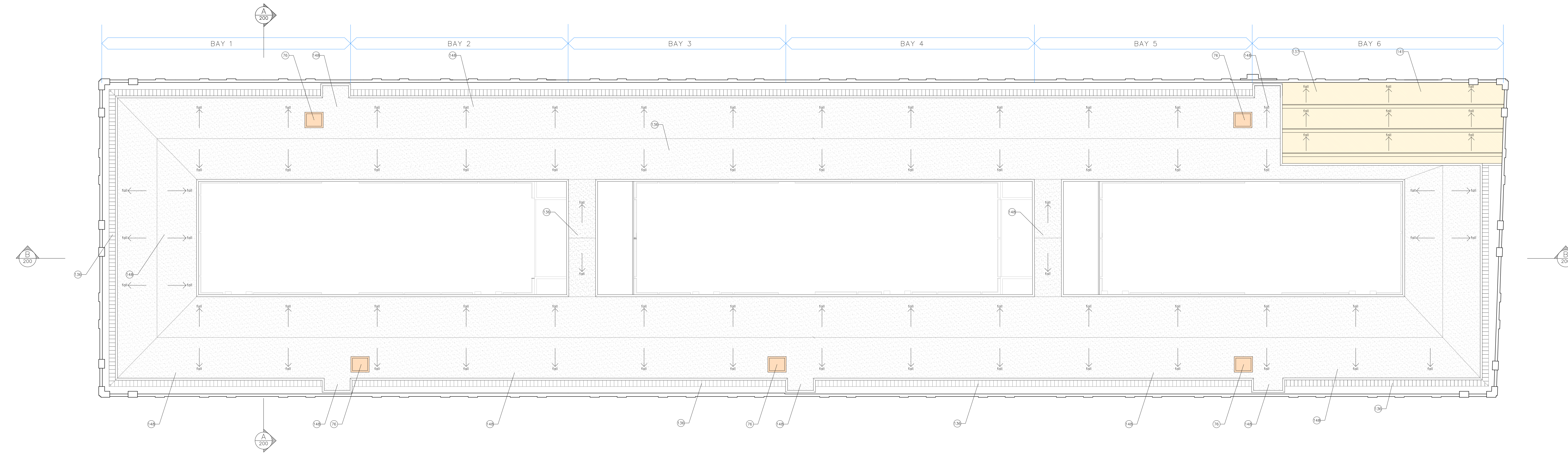


1 Roof Plan - Existing  
PA-114 1:250



2 Roof Plan - Proposed  
PA-114 1:250

ISSUED FOR PLANNING ONLY, NOT FOR CONSTRUCTION

NOTES:

Do not scale from this drawing.

Any discrepancies found on site to be reported to Darmody Architects immediately.

Any discrepancies found on drawings to be reported to Darmody Architects immediately.

Refer to engineers drawings for structural details.

All dimensions sized to blockwork.

Rev.	Description.	Date.	Initials.
A	Exclusion zone for falcon & bat habitat relocated from South-east corner of roof to North-east corner. North-east lift core relocated, and affected apartments reconfigured. Lift cores highlighted in orange, and key/legend added to title sheet.	06/01/16	NB

DRAWING KEY

Existing roof structure to be retained for falcon and bat habitat

Lift cores (5no. total from basement to 13th/penthouse level)

SCALE BAR

0 10 20m

KEY PLAN

TOBACCO WAREHOUSE

TOBACCO WAREHOUSE

TOBACCO WAREHOUSE

NORTH POINT

W N E S

creative innovative flexible

**darmody** architecture

91 Townsend Street, Dublin 2  
353 1 672 9907  
info@darmodyarchitecture.com  
darmodyarchitecture.com

Rev. No.	Scale	Date	Dm. By	Chkd. By	Issue
	1:250 @ A0	11/06/2015	J Lynch	Tim Darmody	PLANNING

Project.	Tobacco Warehouse at Stanley dock Stanley Dock, Liverpool
Title.	Roof Level - Existing & Proposed Plans Tobacco Warehouse
Client.	Stanley Dock Properties Ltd.
Dwg. No.	PA-114
Job No.	1523