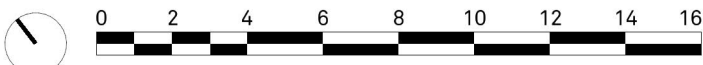
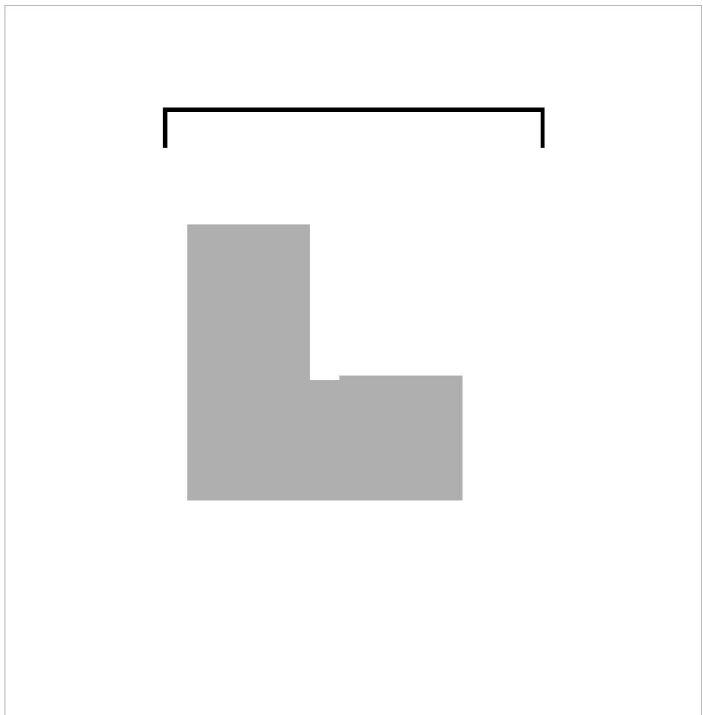


Notes  
This document is © Falconer Chester Hall Limited.  
All drawing measurements shall not be obtained by scaling. Any discrepancies on this document to be immediately reported to the Architect. Verify all dimensions and levels prior to construction. This Document shall be read in conjunction with related documents, specifications and associated models.

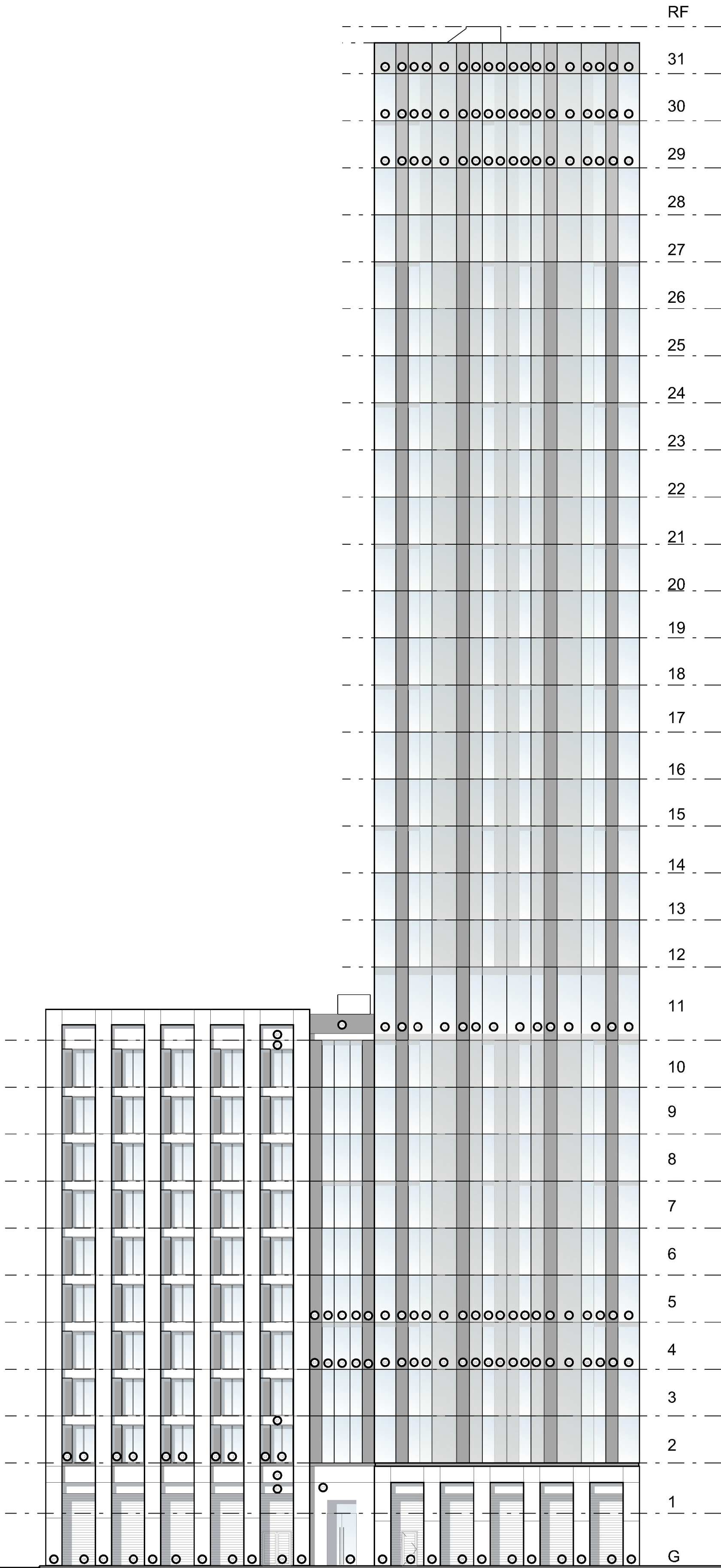


KEY PLAN



Key

- 01 Capless unitised façade system. Clear Glass.
- 02 Capless unitised façade system. Clear Glass with fritting at floor levels if required for fire detailing.
- 03 Capless unitised façade system. Perforated PPC aluminium with solid openable full height door behind.
- 04 Capless unitised façade system. Perforated PPC aluminium with solid openable full height door behind. Lighter shade.
- 05 Capless unitised façade system. Opaque spandrel panel.
- 06 Capless unitised façade system. Opaque spandrel panel Lighter shade.
- 07 Beige re-constituted stone cladding with textured finish.
- 08 PPC aluminium louvres.
- 09 Perforated PPC aluminium
- 10 Capless unitised façade system. Clear Glass with fritting at floor levels / Opaque spandrel panel. Depending on interior fit out.
- 11 Capless unitised façade system. Perforated PPC aluminium.
- 12 Capless unitised façade system. Perforated PPC aluminium. Lighter shade.
- 13 Capped façade system. Clear Glass.



P01 04.05.20 DS MH First Issue  
Rev: | Date: | By: | Chk By: | Rev Note:

**FALCONER  
CHESTER  
HALL**



London | Liverpool | Manchester | [www.fcharchitects.com](http://www.fcharchitects.com) | +44(0)151 243 5800

Project Title  
A06 Princes Dock, Liverpool  
Client  
Peel Land Holdings & Vermont Construction Ltd  
Drawing Title  
East Elevation  
Drawing No.  
P19053-FCH-XX-XX-DR-A-1403  
Status  
S2  
Job No.  
P19-053  
Issue suitable for:  
For Information  
Date  
04.05.20  
Drawing Stage  
PLANNING  
Scale  
1:200 @ A1  
Rev  
P01  
Drawn By  
DS  
Checked By  
MH