

# FALCONER CHESTER HALL



Design intelligence, commercial flair.

# ST JAMES COURT, LIVERPOOL

—  
MIXED USE DEVELOPMENT

—  
CITIPADS

—  
P17-003-02-010

—  
FEBRUARY 2018

FALCONER  
CHESTER  
HALL

---

ST JAMES COURT, LIVERPOOL.

MIXED USE DEVELOPMENT




CITIPADS

FEBRUARY 2018



# ST JAMES COURT

## TYPICAL UPPER FLOOR PLAN

-  - Studio
-  - 1-Bedroom Apartment
-  - 2-Bedroom Apartment



# ST JAMES COURT

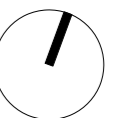
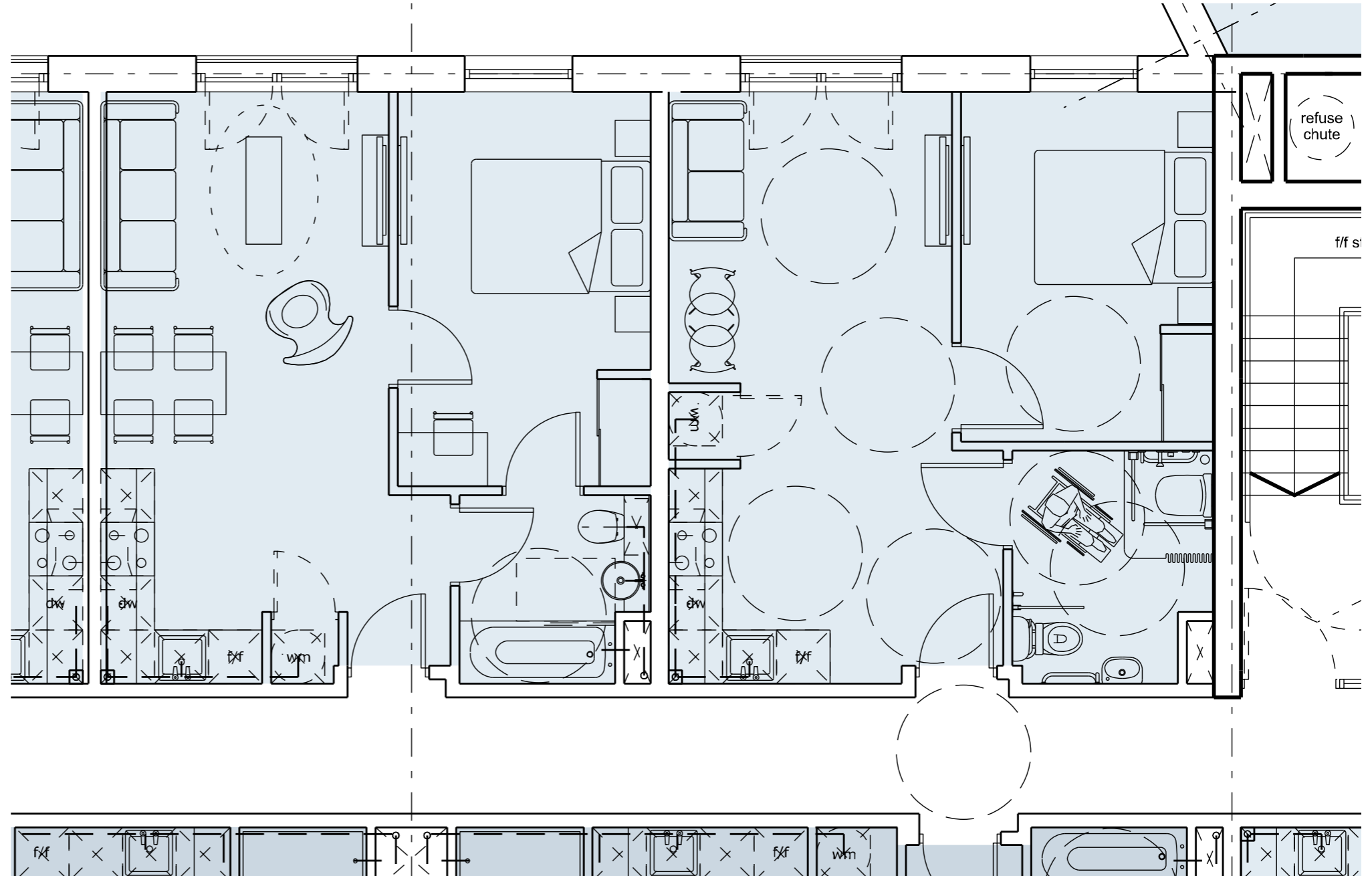
## TYPICAL UPPER FLOOR PLAN 1-7

### DDA Flexible 1 Bed Apartment.

As demonstrated by the plan the standard 1 bedroom apartment can be amended to provide a DDA compliant apartment.

To amend the 1 bedroom apartment to make it DDA compliant a number of small alterations would be required. The bathroom would need to be enlarged to allow for a wet room and the store cupboard relocated.

Two 1 bedroom apartments can be amended on floors upper ground floor-ninth which will provide 20 DDA compliant apartments. This represents 9% of the total apartment number 217.



# CONTACT

---

## Falconer Chester Hall

Nº12 Temple Street  
Liverpool L2 5RH

Telephone +44 (0)151 243 5800

Facsimile +44 (0)151 243 5801

[www.fcharchitects.com](http://www.fcharchitects.com)

FCH

Design intelligence, commercial flair.

---