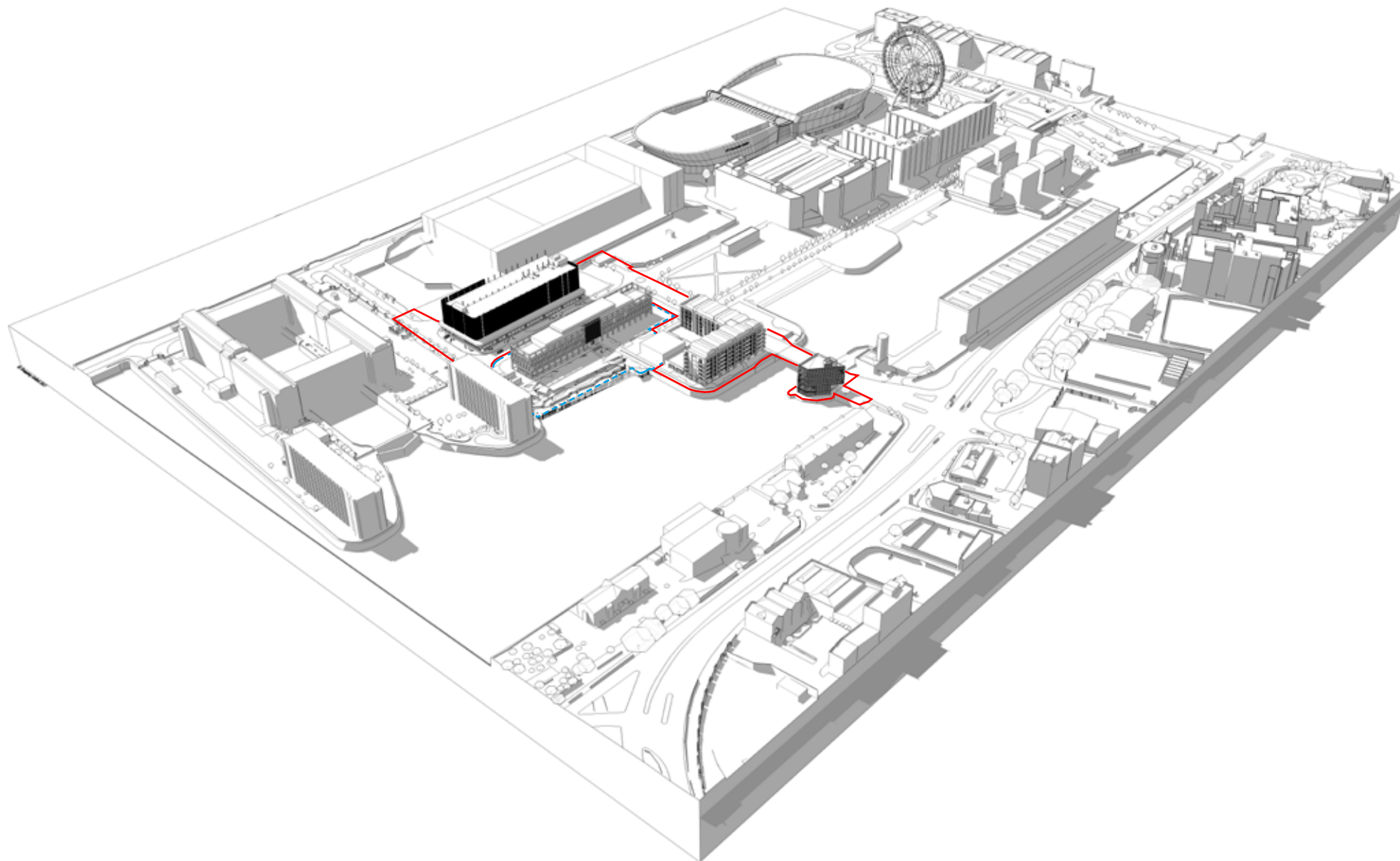


8.0 PUBLIC REALM PROPOSAL.



8.0 PUBLIC REALM PROPOSAL.

8.1 INTRODUCTION.

8.1.1 Introduction..

The key objective of the Landscape Masterplan is to create a high-quality public realm, implemented through a series soft and hard spaces.

Primary destination spaces will encourage foot fall with sub-spaces along the key routes; street scenes will incorporate tree planting, seating and encourage ground floor retail to spill out on the street to activate the public realm.

The key design principles and drivers for the landscape are:

- Creation of a pedestrian friendly streetscape
- Providing human scale by way of furniture and tree planting against the backdrop of the architecture
- Continuity of materials in and around the site in terms of hard and soft landscaping
- Appropriate planting species which are robust enough to withstand the environment and setting
- A series of spatial sequences allowing pedestrians to move, group and gather throughout the key spaces of the scheme
- Links to existing spaces and destinations on the docks
- Creation of a flexible and dynamic site





8.0 PUBLIC REALM PROPOSAL.

8.2 MASTERPLAN PROPOSAL.

8.2.1 Landscaping Design Proposal.



8.0 PUBLIC REALM PROPOSAL.

8.3 MATERIAL PRECEDENTS.



8.0 PUBLIC REALM PROPOSAL. 8.3 MATERIAL PRECEDENTS.




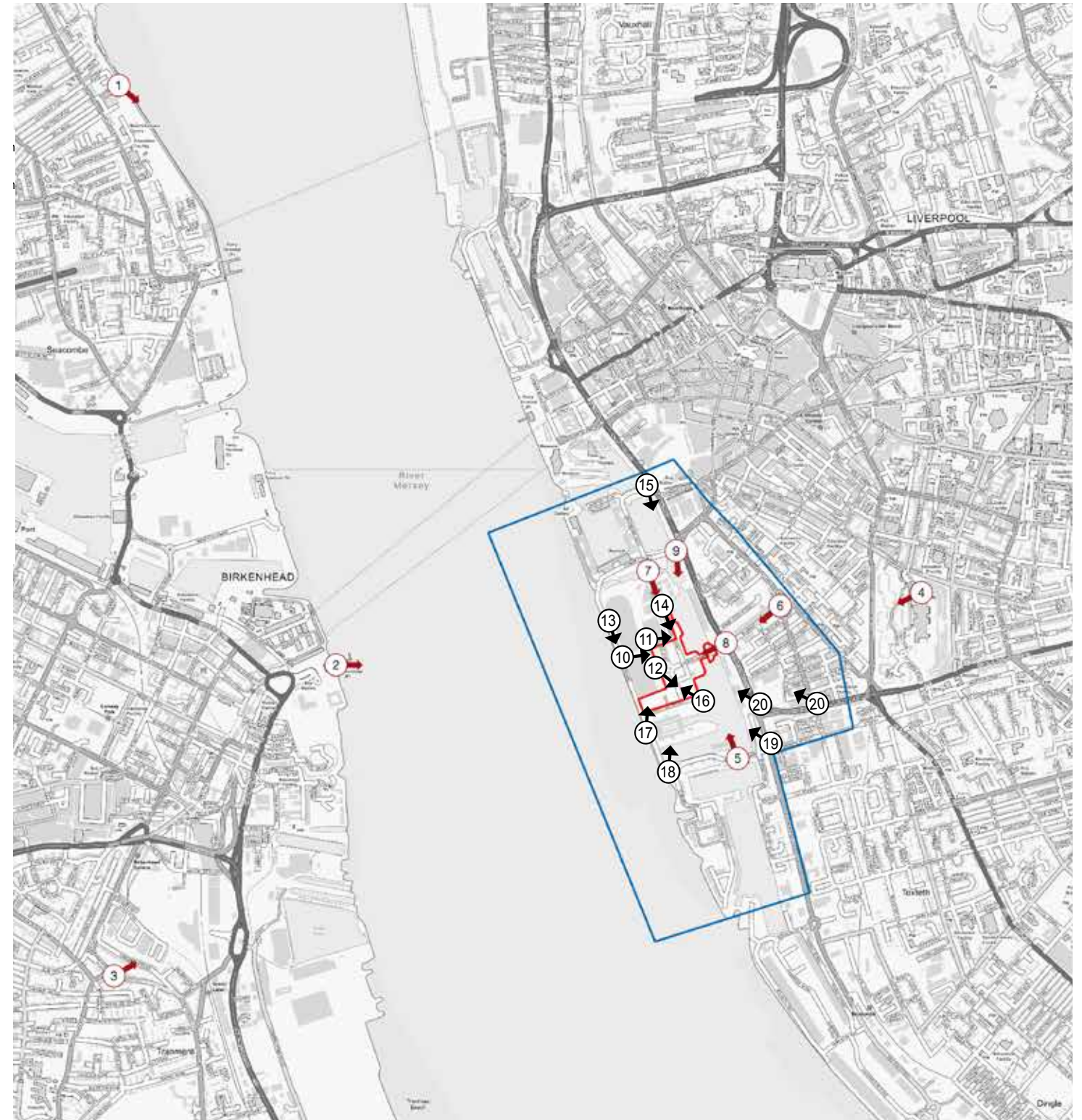
9.0 VISUAL IMPACT ASSESSMENT.

Visual Impact Assessment Viewpoints.

1. View from Wallasey Town Hall.
2. View from Woodside Ferry Terminal.
3. View from Holt Hill.
4. View from the Anglican Cathedral.
5. View from the bridge between Queens Dock and Coburg Dock.
6. View from the junction of Blundell Street and St James Street.
7. View from the pedestrian footbridge across Dukes Dock.
8. View from Wapping.
9. View from Gower Street.
10. View to Anglican Cathedral between ECHO Arena/LCC from Kings Parade.
11. View to Anglican Cathedral between ECHO Arena/LCC from Queens Parade.
12. View from Monarchs Quay.
13. View along Kings Parade.
14. View along Keel Wharf.
15. View from Strand Street.
16. View from waters edge at Queens Dock.
17. View from kings Parade at The Keel.
18. View from Kings Parade at the corner of Queens Branch Dock 01.
19. View from Sefton Street.
20. View from the corner of Parliament Street and Sefton Street.
21. View from Parliament Street and Jamaica Street.

Key.

-  Study Area
-  Application Site
-  Viewpoint Location
-  LCC Agreed Viewpoint Location



9.0 VISUAL IMPACT ASSESSMENT. 9.1 WALLASEY TOWN HALL.



9.0 VISUAL IMPACT ASSESSMENT. 9.2 WOODSIDE FERRY TERMINAL.



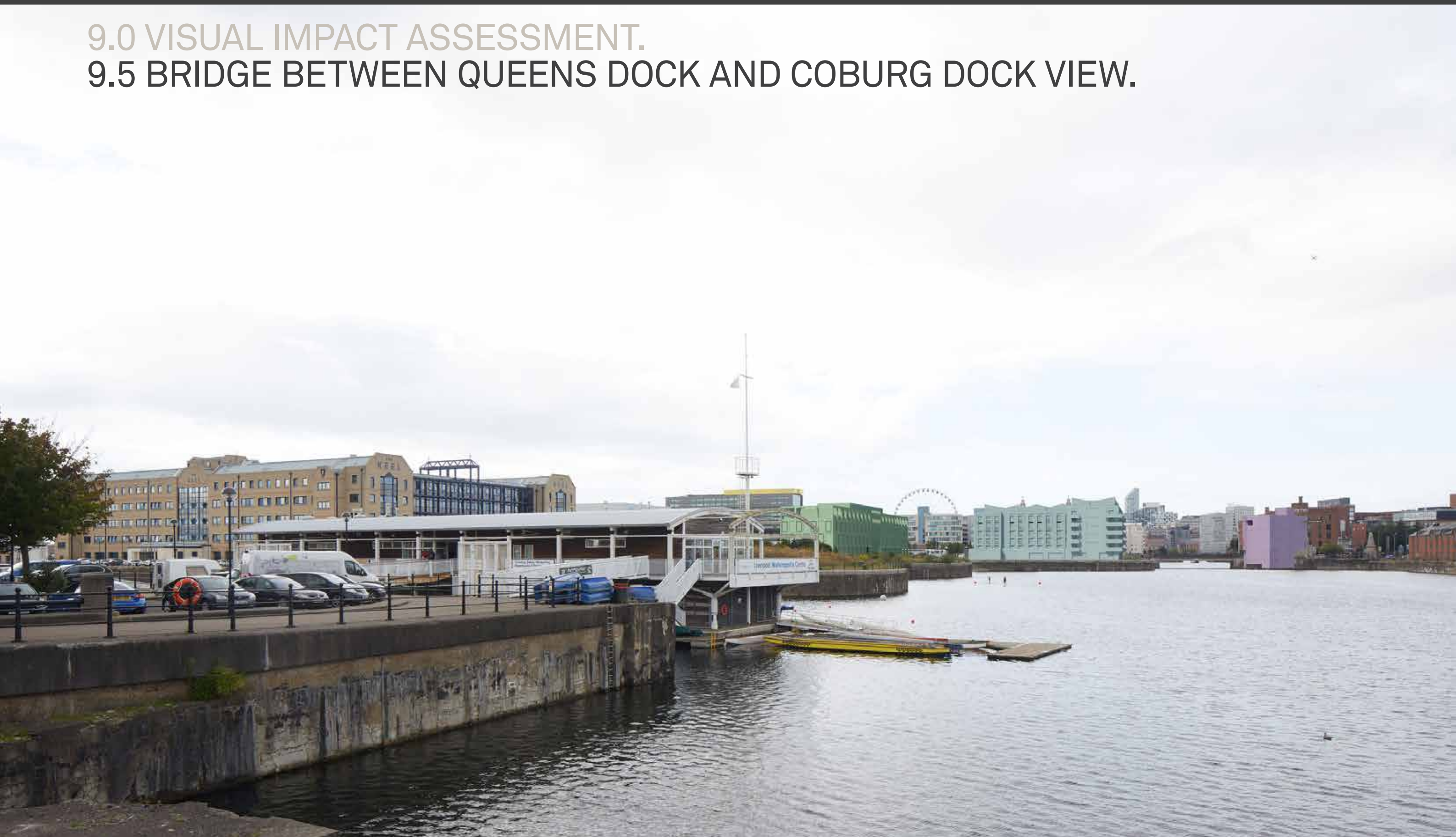
9.0 VISUAL IMPACT ASSESSMENT. 9.3 HOLT HILL VIEW.



9.0 VISUAL IMPACT ASSESSMENT. 9.4 ANGLICAN CATHEDRAL VIEW.



9.0 VISUAL IMPACT ASSESSMENT. 9.5 BRIDGE BETWEEN QUEENS DOCK AND COBURG DOCK VIEW.



9.0 VISUAL IMPACT ASSESSMENT. 9.6 BLUNDELL STREET / ST JAMES STREET VIEW.



9.0 VISUAL IMPACT ASSESSMENT. 9.7 PEDESTRIAN FOOTBRIDGE ACROSS DUKES DOCK.



9.0 VISUAL IMPACT ASSESSMENT. 9.8 WAPPING VIEW.



9.0 VISUAL IMPACT ASSESSMENT. 9.9 GOWER STREET VIEW.



9.0 VISUAL IMPACT ASSESSMENT. 9.10 ANGLICAN CATHEDRAL - KINGS PARADE VIEW.



9.0 VISUAL IMPACT ASSESSMENT. 9.11 ANGLICAN CATHEDRAL - QUEENS PARADE VIEW.



9.0 VISUAL IMPACT ASSESSMENT. 9.12 MONARCHS QUAY VIEW.



9.0 VISUAL IMPACT ASSESSMENT. 9.13 KINGS PARADE VIEW



9.0 VISUAL IMPACT ASSESSMENT. 9.14 KEEL WHARF VII

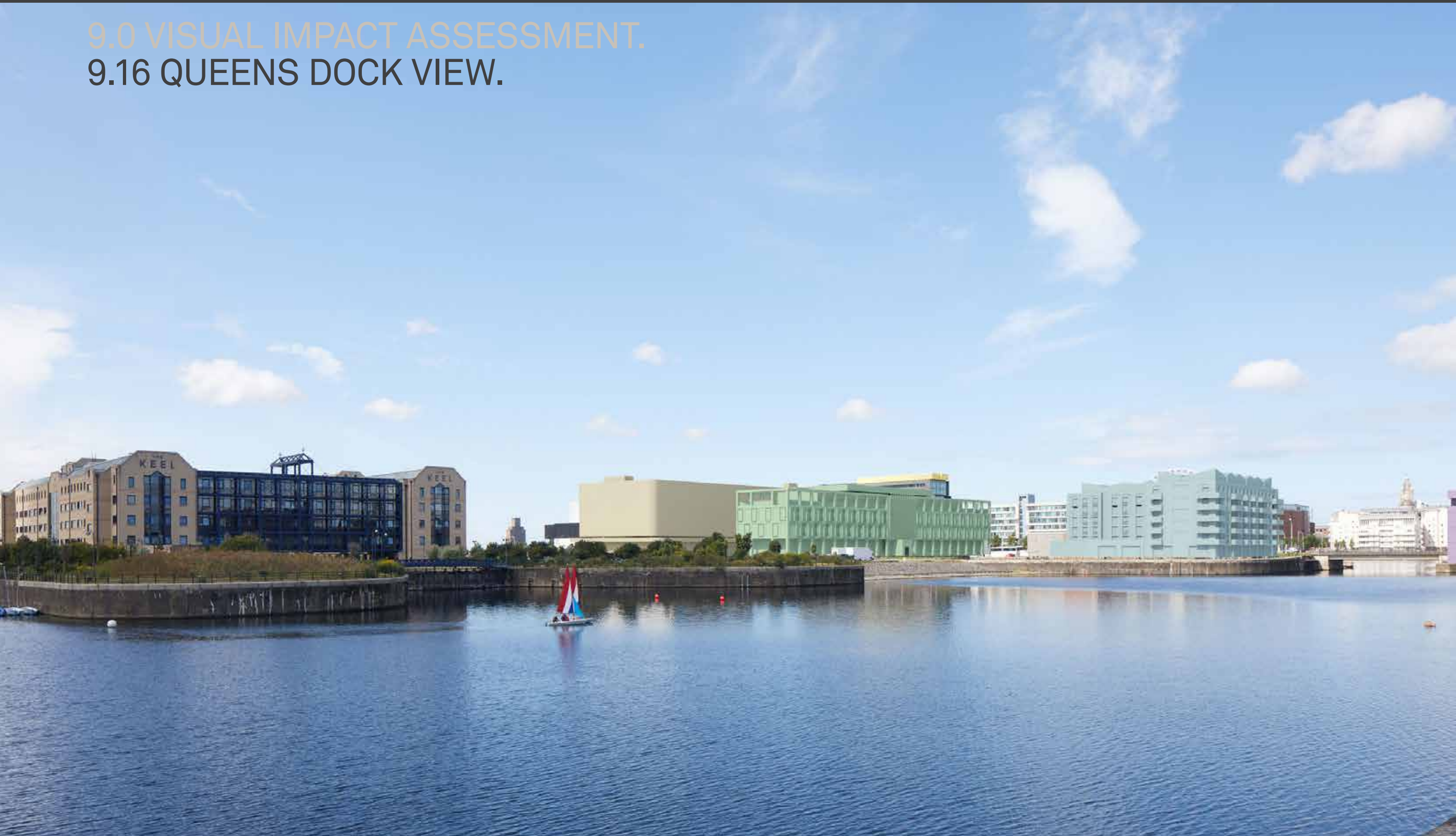


9.0 VISUAL IMPACT ASSESSMENT. 9.15 STRAND STREET VIEW.





9.0 VISUAL IMPACT ASSESSMENT. 9.16 QUEENS DOCK VIEW.



9.0 VISUAL IMPACT ASSESSMENT. 9.17 THE KEEL - KINGS PARADE VIEW.



9.0 VISUAL IMPACT ASSESSMENT.

9.18 QUEENS DOCK BRANCH 01 - KINGS PARADE VIEW.



9.0 VISUAL IMPACT ASSESSMENT. 9.19 SEFTON STREET VIEW.

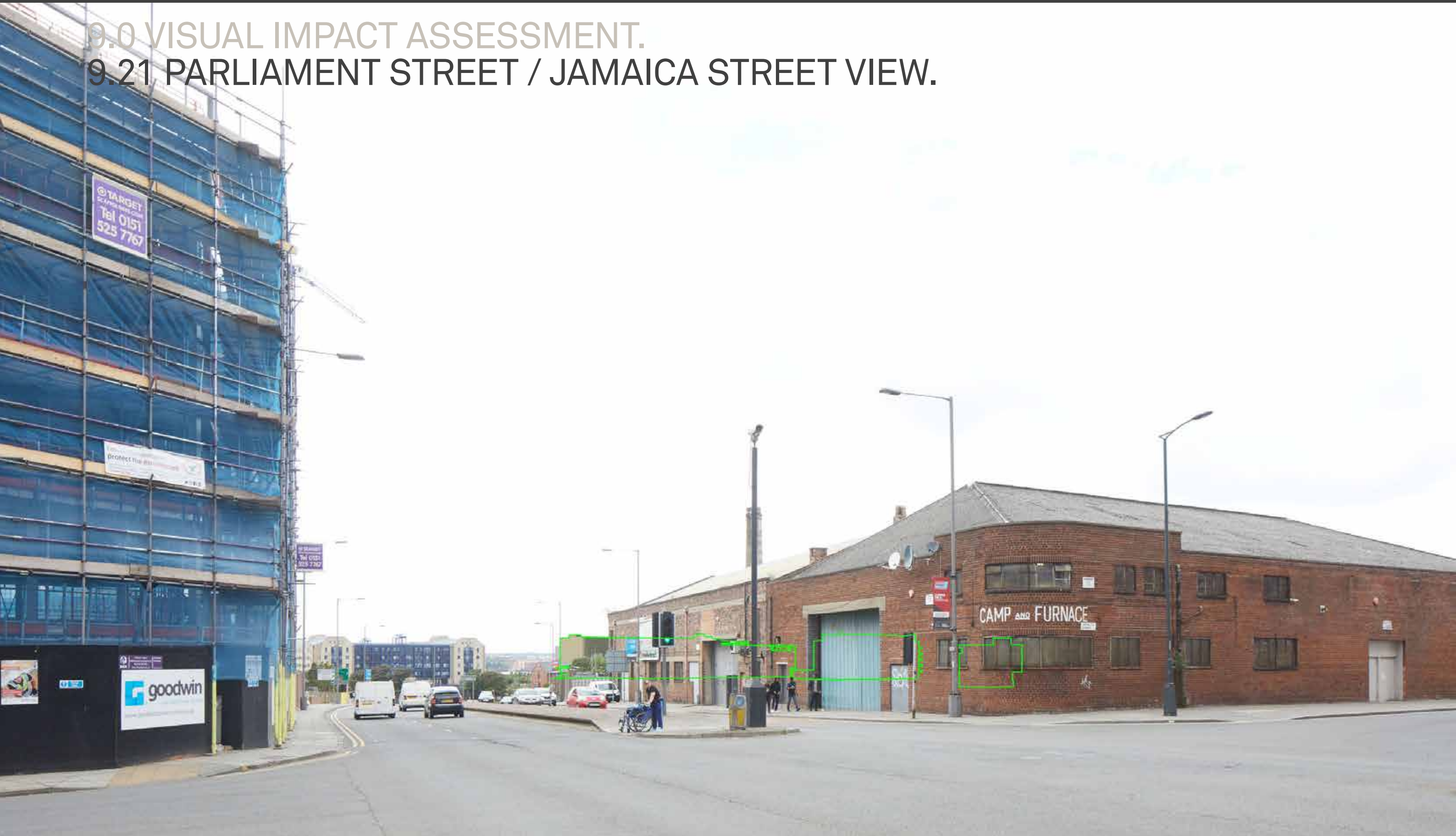


9.0 VISUAL IMPACT ASSESSMENT. 9.20 PARLIAMENT STREET / SEFTON STREET VIEW.



9.0 VISUAL IMPACT ASSESSMENT.

9.21 PARLIAMENT STREET / JAMAICA STREET VIEW.





10.0 DRAWING INDEX.

Drawings submitted as part of this application:

Block B - Interpretation Centre & Office.

05-02-01	Proposed Lower Ground Floor Plan
05-02-02	Proposed Ground Floor Plan
05-02-03	Proposed First & Second Floor Plan
05-02-04	Proposed Third & Roof Plan
05-02-05	Proposed Elevation 1
05-02-06	Proposed Elevation 2 & 3
05-02-07	Proposed Elevation 4

Block C - Multi Storey Car Park.

L1711_DE-100 (F00)	Demolition Plan
L1711_PL-001 (F00)	Site Location Plan
L1711_PL-100 (F04)	Proposed level 0
L1711_PL-101 (F05)	Proposed Level 1 & 2, Typical Level and Level 11 & 12
L1711_PL-201 (F04)	Proposed Section 01 & 02
L1711_PL-301 (F02)	Proposed Elevation 01 & 02
L1711_PL-301 (F00)	Proposed Elevation 03 & 04

Public Realm Proposal.

LYR058.1B_M300 rA	Site Landscape GA
LYR058.1B_M301	Softworks
LYR058.1B_MQ_ID001 rA	Landscape Chapter

Block D - Residential Development.

P16-144-01-01-005B	Existing Site Plan
P16-144-02-02-007B	Proposed Site Plan
P16-144-02-03-D-101	Proposed Ground Floor Plan
P16-144-02-03-D-102A	Proposed 1st Floor Plan
P16-144-02-03-D-103	Proposed 2nd - 5th Floor Plan
P16-144-02-03-D-107A	Proposed 6th Floor Plan
P16-144-02-03-D-008	Proposed Roof Plan
P16-144-02-03-D-001	Proposed Elevation 01
P16-144-02-03-D-002	Proposed Elevation 02
P16-144-02-03-D-003	Proposed Elevation 03
P16-144-02-03-D-004	Proposed Elevation 04
P16-144-02-05-D-101	Proposed Contextual Elevation 01
P16-144-02-05-D-102	Proposed Contextual Elevation 02
P16-144-02-05-D-103A	Proposed Contextual Elevation 03
P16-144-02-05-D-104	Proposed Contextual Elevation 04
P16-144-02-05-D-105A	Proposed Contextual Elevation 05
P16-144-02-05-D-106	Proposed Contextual Elevation 06
P16-144-02-05-D-107	Proposed Contextual Elevation 07
P16-144-02-05-D-108	Proposed Contextual Elevation 08





11.0 CONSULTANTS.

Applicant

YPG Projects Ltd.
Unit 1F
2nd Floor
Colombus Quay
Riverside Drive
Liverpool, L3 4DB
Tel: +44 (0)161 821 1881

Architect

Falconer Chester Hall
12 Temple Street
Liverpool, L2 5RH
Tel: +44 (0)151 243 5800

Potter Holmes Architects
27 Bulwer Street
London, W12 8AR
Tel: +44 (0)20 8749 3123

Planning Consultant

Knight Frank
One Marsden Street
Manchester, M2 1HW
Tel: +44 (0)161 832 0023

Engagement

ICENI
That Space
31 Princess Street
Manchester, M2 4EW
Tel: +44 (0)7817 809594

Landscape Architect

Layer
The Barn
One Hollin Lane
Styal, SK9 4JH
Tel: +44 (0)7711808474

Heritage Consultant

Turley Associates
1 New York Street
Manchester, M1 4HD
Tel: +44 (0)161 233 7676

Noise Impact Assessment

Environmental Noise Solutions
Doncaster Business Innovation Centre,
Ten Pound Walk,
Doncaster, DN4 5HX
Tel: +44 (0)1302 644001

Transport Statement

Vectio Consulting Limited
The Barnhouse
Lutterworth Road
Gilmorton
Leicestershire, LE17 5PN

Ecology

Smeeden Foreman
Somerset House, Low Moor Lane,
Scotton, Knaresborough
North Yorkshire, HG5 9JB
Tel: +44 (0)1423 863369

Microclimate Assessment

Urban Microclimate
Urban Microclimate Ltd.
16 Torrington Gardens
Perivale
Middlesex UB6 7EN
Tel: +44 (0) 79 9097 2510

Flood Risk and Drainage

Enzygo Ltd
Stag House
The Chipping
Wotton under Edge, GL12 7AD
Tel: +44 (0)114 321 5151

Phase 1 Contamination Desk Study / Coal Mining Risk Assessment

E3P,
Heliport Business Park,
Liverpool Road,
Eccles, Manchester, M30 7RU
Tel: +44 (0)161 707 9612

Air Quality

Wardell Armstrong
76 King Street
Manchester, M2 4NH
Tel: +44 (0)161 817 5038

Archaeology

Salford Archaeology
LG19, Peel Building,
University of Salford,
The Crescent, Salford,
Greater Manchester, M5 4WT
Tel: +44 (0)161 295 3825

Daylight, Sunlight + Overshadowing

Delva Patman Redler
Tharries Inn House
3-4 Holborn Circus
EC1N 2HA
Tel: +44 (0)207 936 3668

