

William Jessop Way

Rev E - 05.07.2017 - General update.  
Rev D - 10.01.2017 - Apartment 3 Bed + Study Indicated.  
Rev C - 10.01.2017 - Floor plan now ranges from levels 27-33.  
Rev B - 22.09.2016 - External envelope developed, apartment layouts indicated.  
Rev A - 02.08.2016 - Amendments to core.

Project Title  
Princes Reach, Princes Dock, Liverpool

Drawing Title  
Level 33

Client  
MODA Living (Princes Dock) Ltd, Tower One Property Company Ltd, Peel Land (Intermediate) Ltd

Drawn By  
MH

Date  
May 2016

Scale  
1:200 @ A3

Project No.  
P15-111

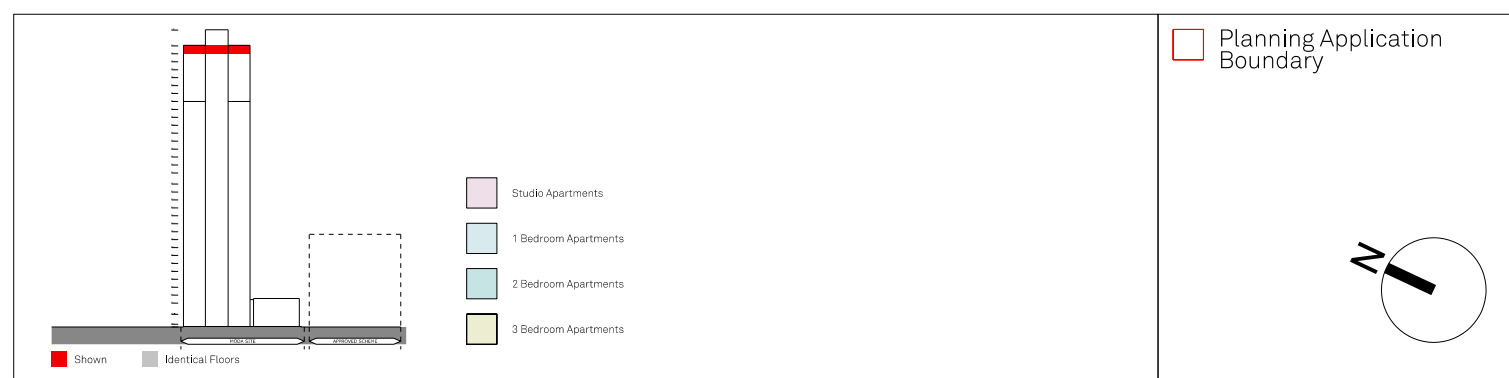
Drawing No.  
02-03-033E

# FALCONER CHESTER HALL



London | Liverpool | Kuala Lumpur | Telephone +44(0)151 243 5800

www.fcharchitects.com  
© F.C.H.



PLEASE NOTE THAT CERTAIN DRAWINGS WERE RECEIVED FROM A THIRD PARTY AND WE CANNOT CONFIRM THEIR ACCURACY. WE WOULD ADVISE THAT ALL DRAWINGS / DIMENSIONS ARE CHECKED ON SITE.