

William Jessop Way

Rev D - 05.07.2017 - General update.  
Rev C - 21.02.2017 - Building footprint reduced; duplicate floor plans between level 03-13 (previously 03-09)  
Rev B - 22.09.2016 - External envelope developed, apartment layouts indicated.  
Rev A - 02.08.2016 - Amendments to core.

Project Title  
Princes Reach, Princes Dock, Liverpool

Drawing Title  
Level 03-13

Client  
MODA Living (Princes Dock) Ltd, Tower One Property Company Ltd, Peel Land (Intermediate) Ltd

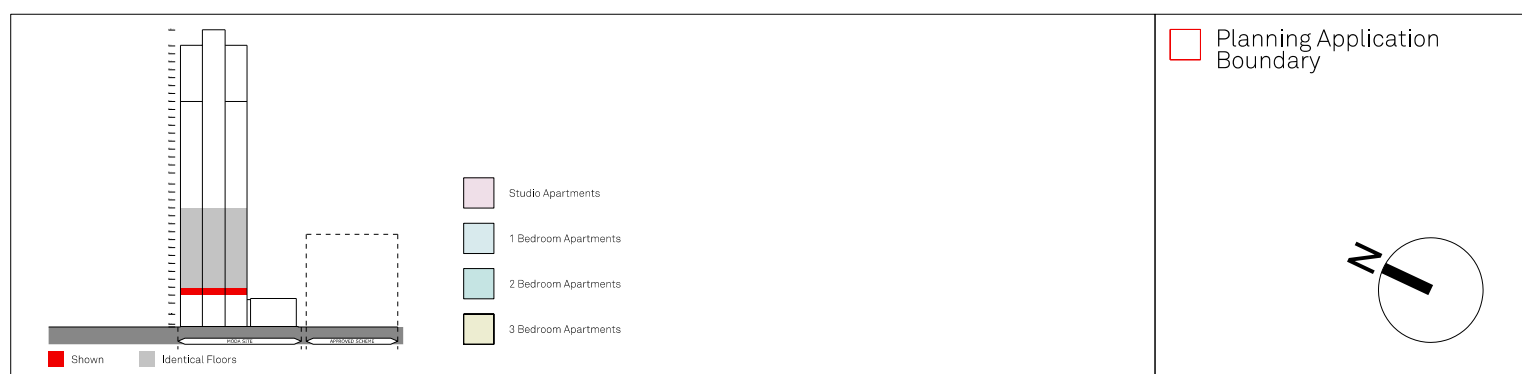
Drawn By  
MH

Date  
May 2016

Project No.  
P15-111

Scale  
1:200 @ A3

Drawing No.  
02-03-003D



PLEASE NOTE THAT CERTAIN DRAWINGS WERE RECEIVED FROM A THIRD PARTY AND WE CANNOT CONFIRM THEIR ACCURACY. WE WOULD ADVISE THAT ALL DRAWINGS / DIMENSIONS ARE CHECKED ON SITE.

# FALCONER CHESTER HALL



London | Liverpool | Kuala Lumpur | Telephone +44(0)151 243 5800

www.fcharchitects.com  
© F.C.H.