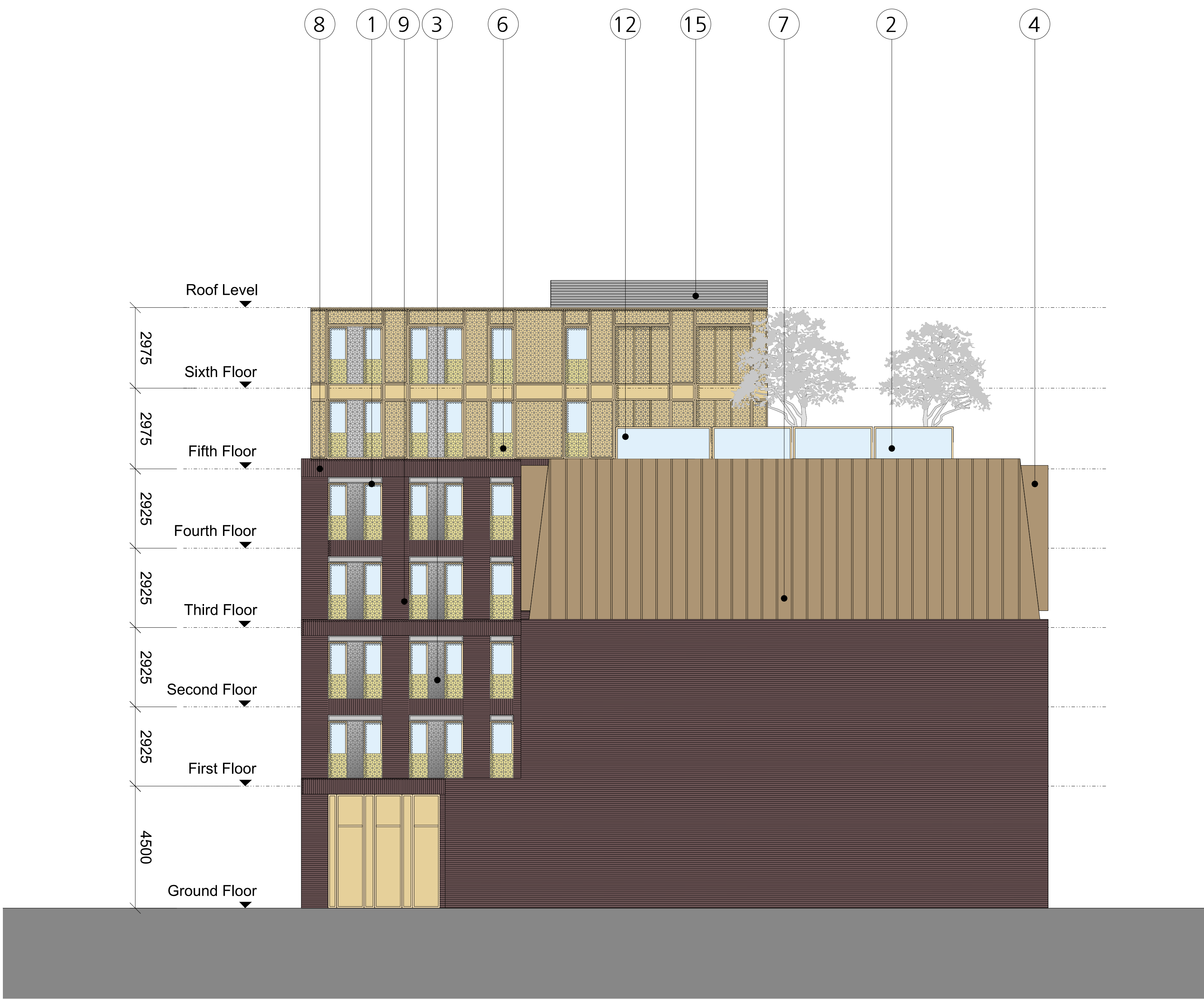


- MATERIALS KEY
- 1. Anodised aluminium windows: (Colour: Anolok 543)
 - 2. Glass balustrade with anodised aluminium frame (Colour: Anolok 453)
 - 3. Patternated concrete column
 - 4. Projecting dormer - Copper cladding by Arubis (Nordic Brown Light) or similar approved
 - 5. Perforated panel - Brass cladding by Arubis (Nordic Brass Weathered) or similar approved
 - 6. Perforated balcony - Brass cladding by Arubis (Nordic Weathered) or similar approved
 - 7. Standing seam copper cladding by Arubis (Nordic Brown Light) or similar approved
 - 8. Brickwork soldier course
 - 9. Brickwork
 - 10. Feature concrete lintel
 - 11. Opaque glass
 - 12. Patternated and perforated panel - Brass cladding by Arubis (Nordic Brass Weather) or similar approved
 - 13. Frameless glass balustrade
 - 14. Recess brickwork to plinth
 - 15. Aluminium louvers



FALCONER
CHESTER
HALL



London | Liverpool | Kuala Lumpur | Telephone +44(0)151 243 5800

Project Title		Seel Street, Liverpool
Drawing Title		Elevation 02
Client		Wolstenhome Square Developments Ltd.
Drawn By	Date	Project No.
JC	MAR 2016	P15-098
Scale		Drawing No.
1:100 @ A1		02-05-002A

www.fcharchitects.com
© F.C.H.