

# FALCONER CHESTER HALL



Design intelligence, commercial flair.

## SEEL STREET, LIVERPOOL

PROPOSED APART HOTEL DEVELOPMENT

—  
PLANNING APPLICATION DRAWINGS

—  
ELLIOT GROUP

—  
P15-098-02-002

—  
03.2016

# SEEL STREET, LIVERPOOL

## SITE LOCATION PLAN

---





# FALCONER CHESTER HALL



Telephone +44(0)151 243 5800  
London | Liverpool | Kuala Lumpur

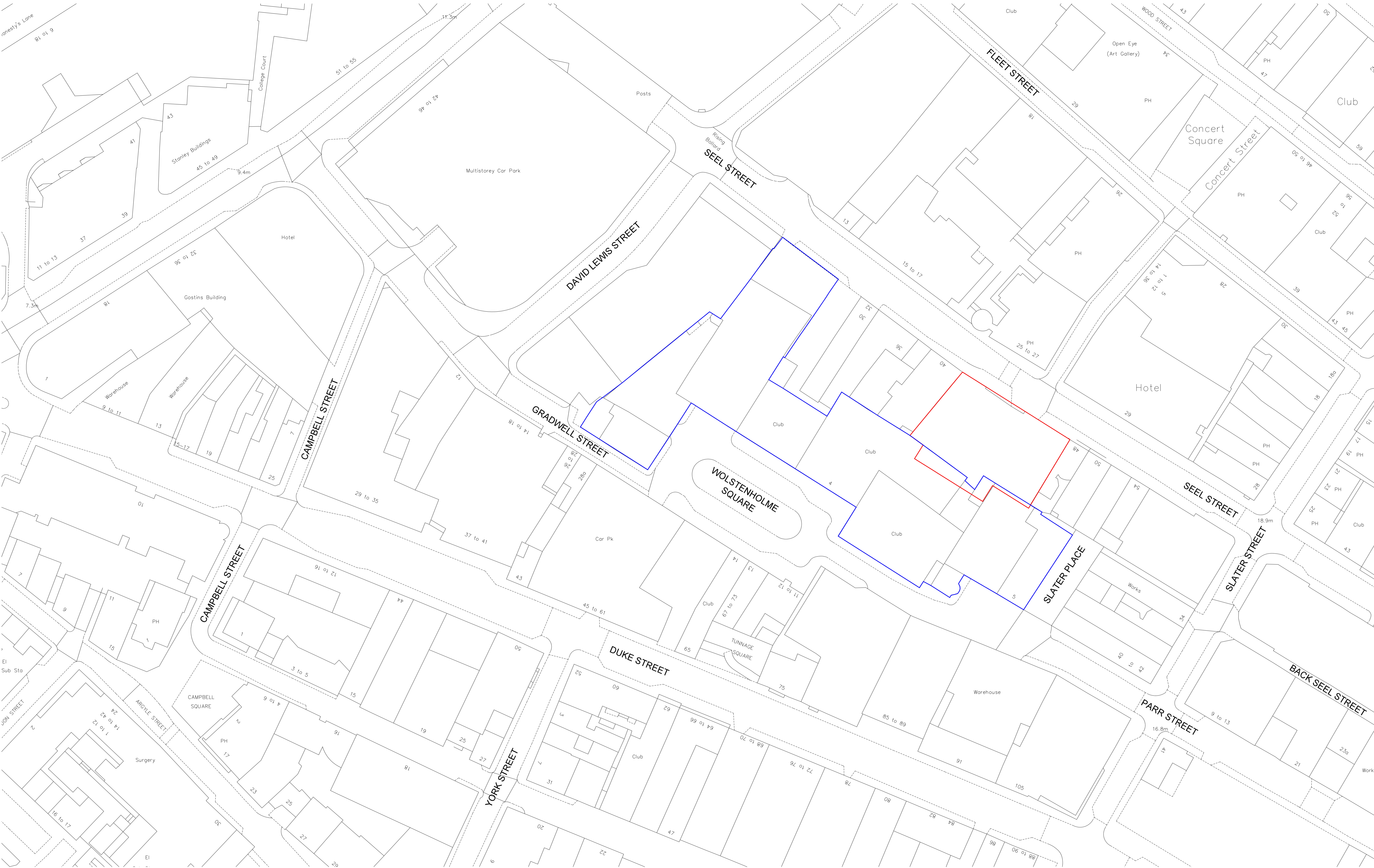
Project Title		Project No.
42 Seel Street		
Drawing Title		Drawing No.
Location Plan		
Client		Scale
Elliot Group		
Drawn By	Date	02-02-001
AG	SEP 2015	
Scale		www.fcharchitects.com © F.C.H.
1:500@A3		

# SEEL STREET, LIVERPOOL

## EXISTING SITE PLAN

---





— Wolstenholme Square Ownership  
— Seel Street Planning Boundary

FALCONER  
CHESTER  
HALL



London | Liverpool | Kuala Lumpur | Telephone +44(0)151 243 5800

Project Title  
42 Seel Street, Liverpool  
Drawing Title  
Site Layout Plan  
Client  
Elliot Group  
Drawn By  
JC  
Scale  
1:500 @ A1  
Date  
MAR 2016  
Project No.  
P15-098  
Drawing No.  
02-02-001

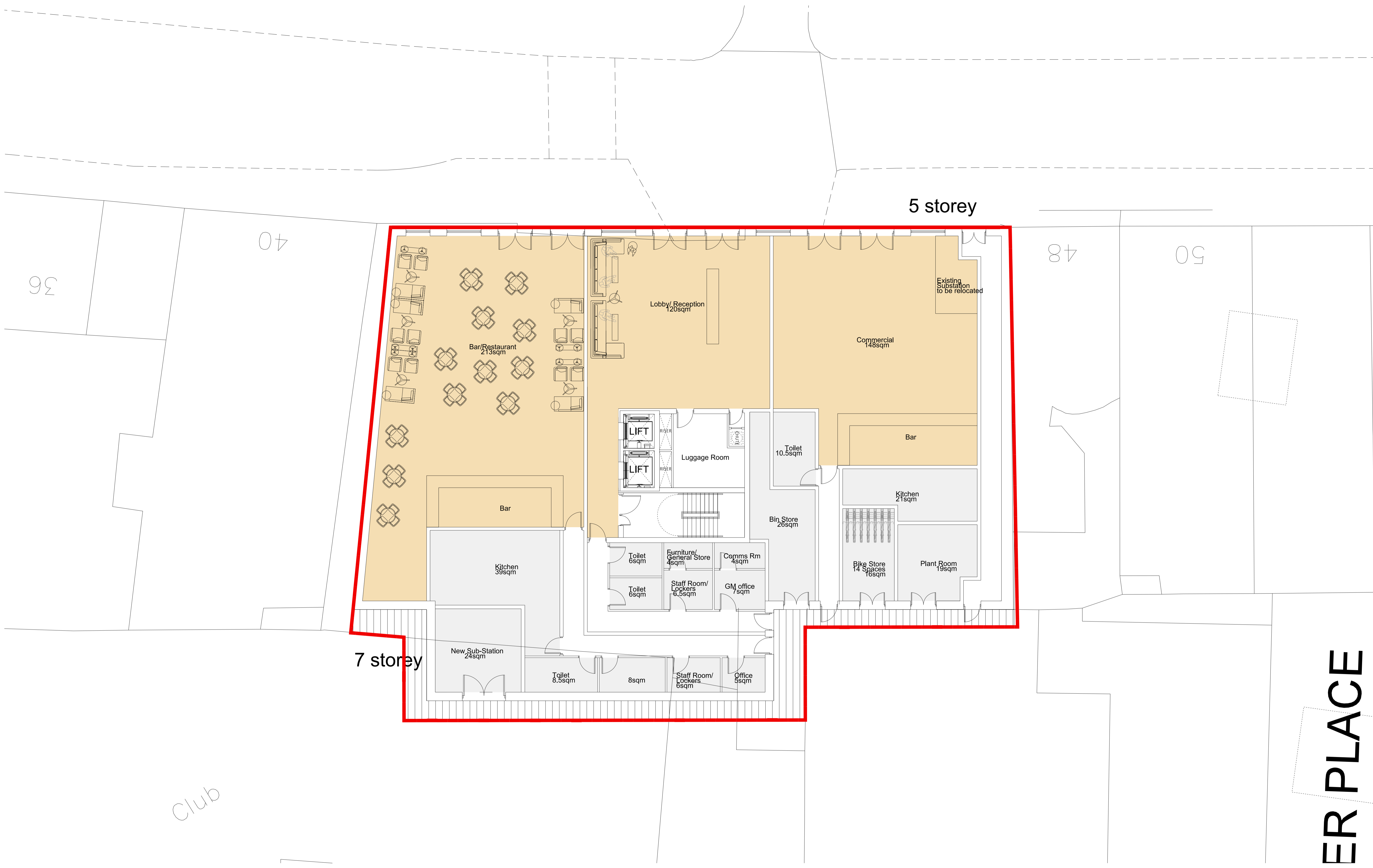
www.fcharchitects.com  
© F.C.H.

# SEEL STREET, LIVERPOOL

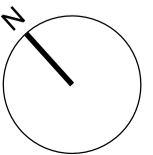
## PROPOSED PLANS

---





ER PLACE



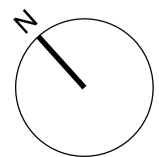
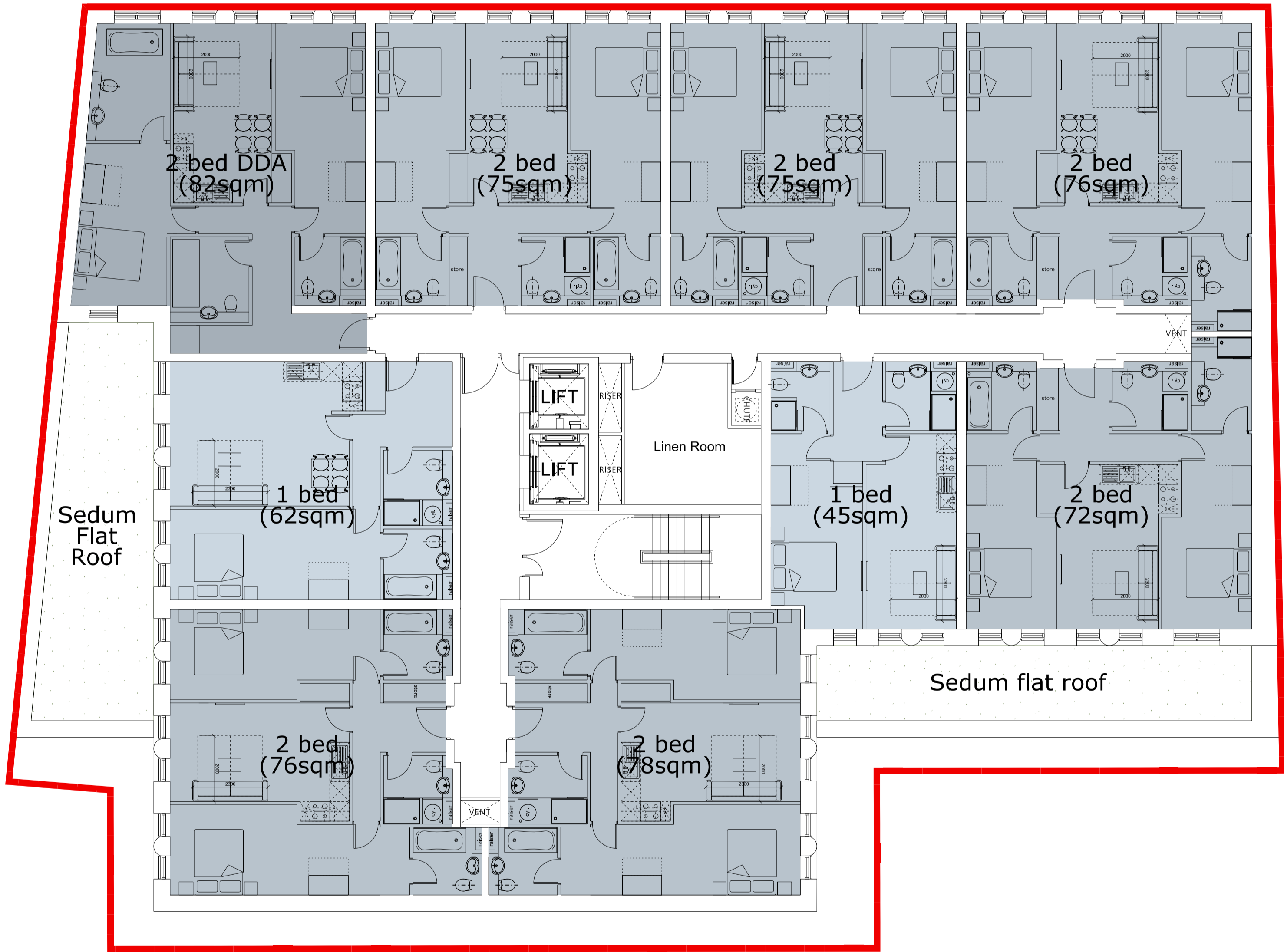
FALCONER  
CHESTER  
HALL



London | Liverpool | Kuala Lumpur | Telephone +44(0)151 243 5800

Project Title Seel Street, Liverpool		Project No. P15-098
Drawing Title Ground floor plan		Drawing No. 02-03-001C
Client Wolstenhome Square Developments Ltd.		
Drawn By JC	Date MAR 2016	
Scale 1:100 @ A1		

www.fcharchitects.com  
© F.C.H.

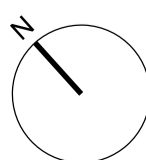


**FALCONER  
CHESTER  
HALL**



London | Liverpool | Kuala Lumpur | Telephone +44(0)151 243 5800

Project Title  
Seel Street, Liverpool  
Drawing Title  
Typical Upper Floor Plan  
Client  
Wolstenhome Square Developments Ltd.  
Drawn By  
JC  
Scale  
1:100 @ A1  
Date  
MAR 2016  
Project No.  
P15-098  
Drawing No.  
02-03-002A  
www.fcharchitects.com  
© F.C.H.

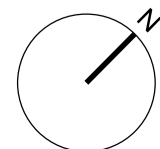


FALCONER  
CHESTER  
HALL



London | Liverpool | Kuala Lumpur | Telephone +44(0)151 243 5800

Project Title		Project No. P15-098
Seel Street, Liverpool		
.....		
Drawing Title		
Third Floor Plan		
Client		Drawing No. 02-03-004
Wolstenhome Square Developments Ltd.		
Drawn By	Date	
JC	MAR 2016	
.....		
Scale		
1:100 @ A1		
.....		



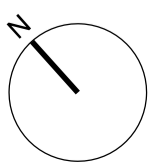
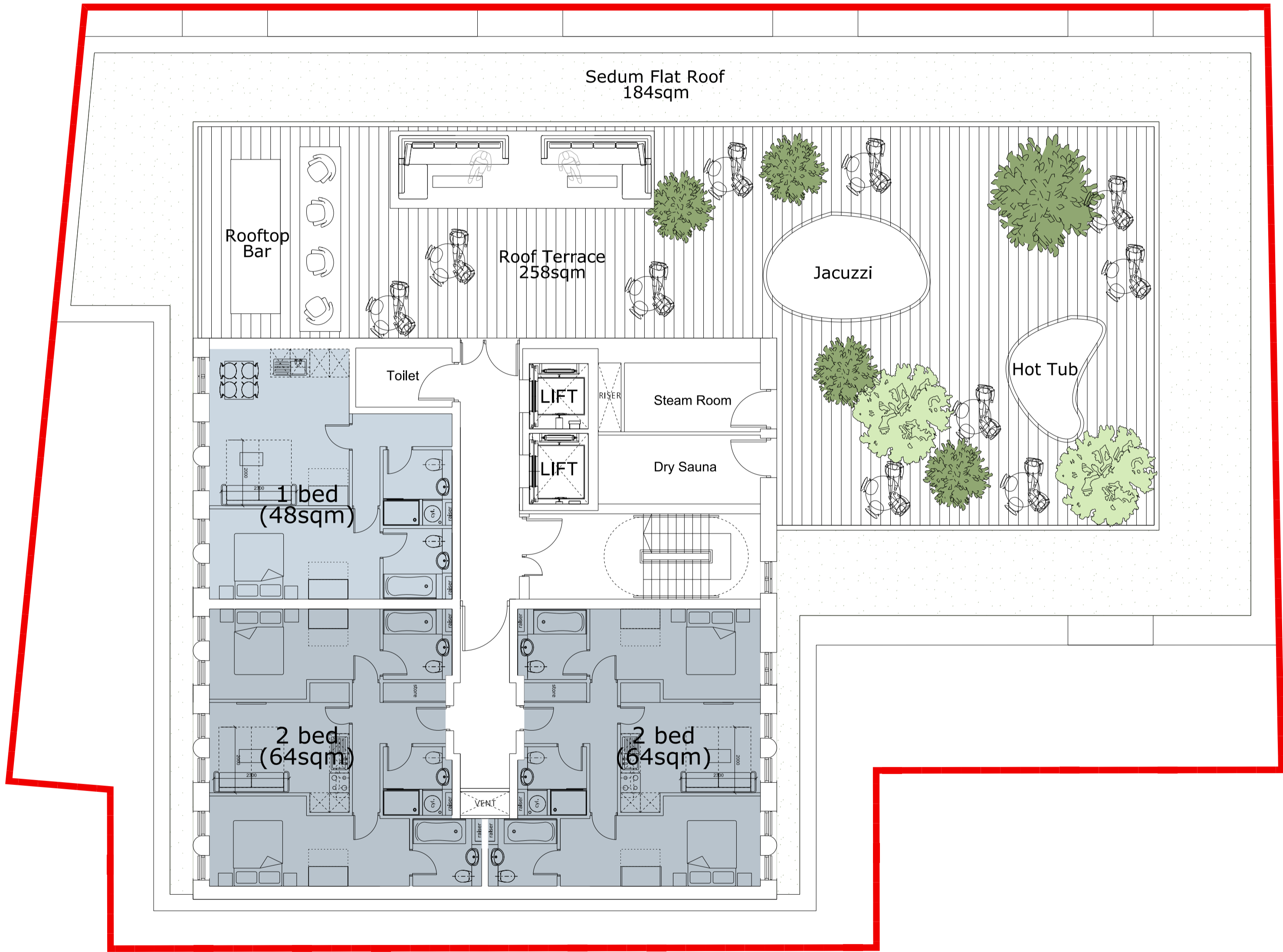
**FALCONER  
CHESTER  
HALL**



London | Liverpool | Kuala Lumpur | Telephone +44(0)151 243 5800

Project Title  
Seel Street, Liverpool  
Drawing Title  
Fourth Floor Plan  
Client  
Wolstenhome Square Developments Ltd.  
Drawn By  
JC  
Scale  
1:100 @ A1  
Date  
MAR 2016  
Project No.  
P15-098  
Drawing No.  
02-03-005

www.fcharchitects.com  
© F.C.H.

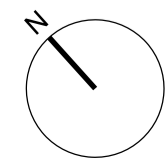
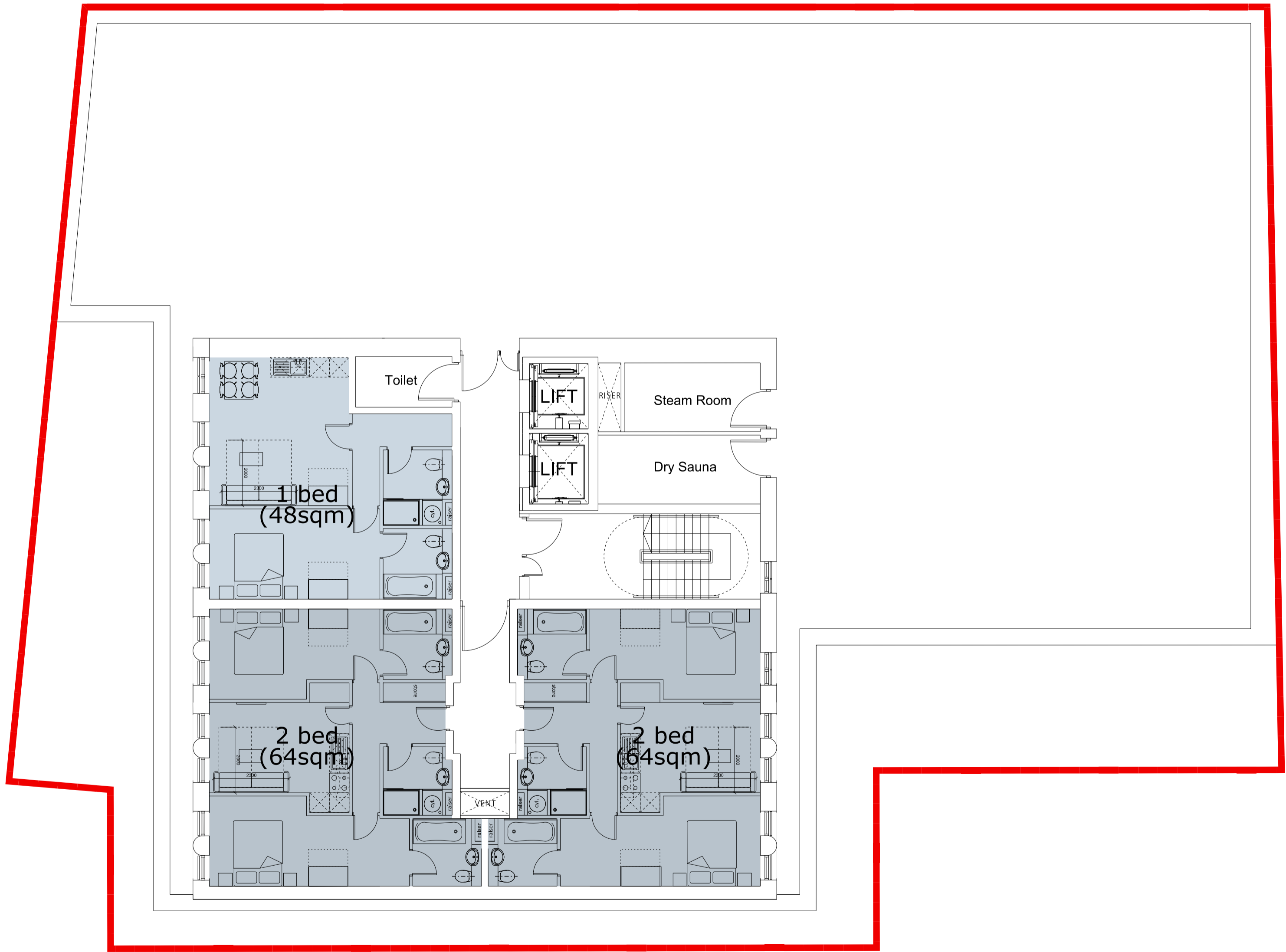


**FALCONER  
CHESTER  
HALL**



London | Liverpool | Kuala Lumpur | Telephone +44(0)151 243 5800

Project Title  
Seel Street, Liverpool  
Drawing Title  
Typical Upper Floor Plan  
Client  
Wolstenhome Square Developments Ltd.  
Drawn By  
JC  
Scale  
1:100 @ A1  
Date  
FEB 2016  
Project No.  
P15-098  
Drawing No.  
02-03-006  
www.fcharchitects.com  
© F.C.H.



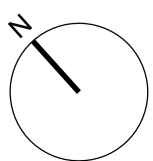
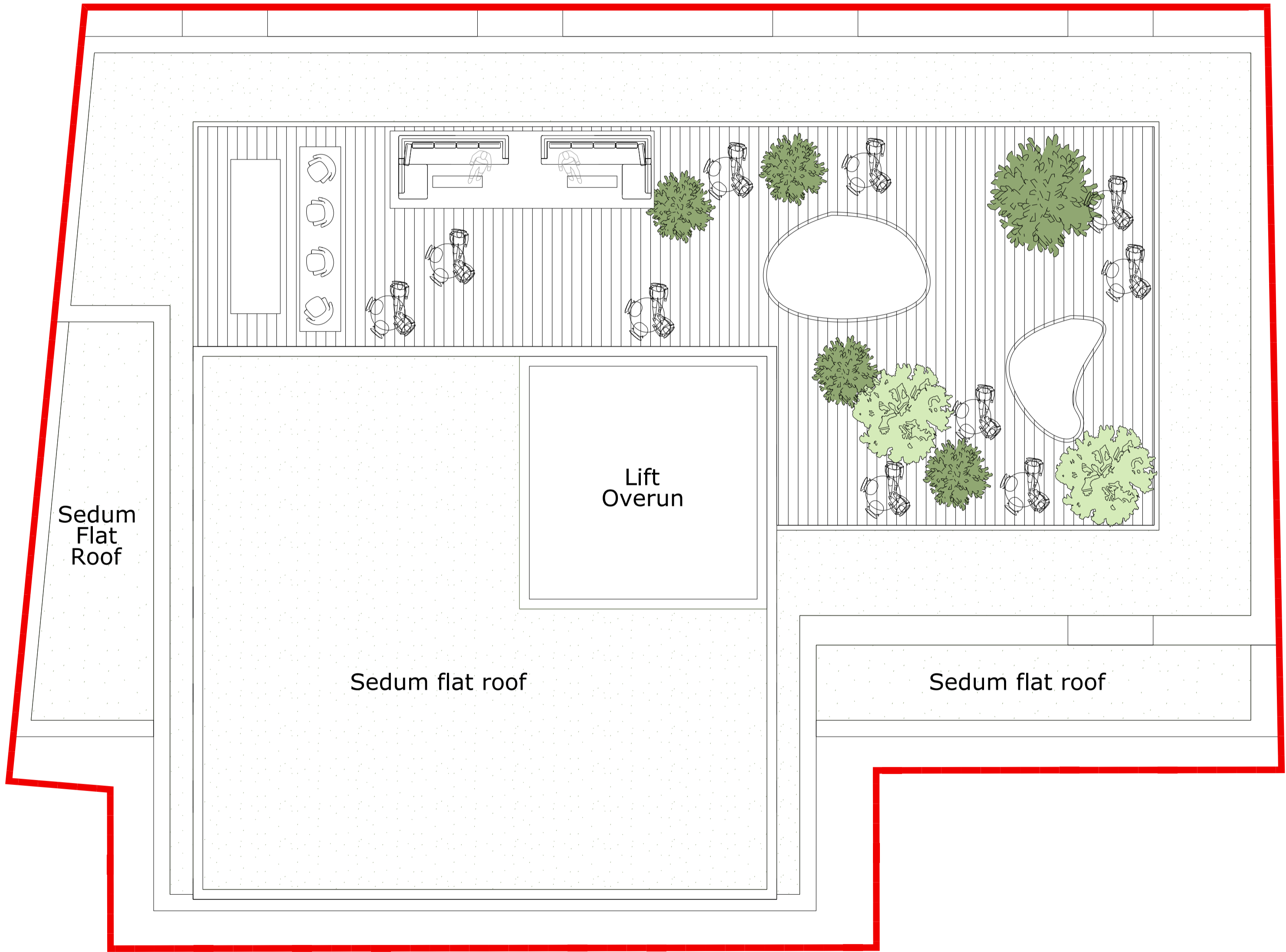
**FALCONER  
CHESTER  
HALL**



London | Liverpool | Kuala Lumpur | Telephone +44(0)151 243 5800

Project Title  
Seel Street, Liverpool  
Drawing Title  
Sixth Floor Plan  
Client  
Wolstenhome Square Developments Ltd.  
Drawn By  
JC  
Scale  
1:100 @ A1  
Date  
MAR 2016  
Project No.  
P15-098  
Drawing No.  
02-03-007

www.fcharchitects.com  
© F.C.H.



**FALCONER  
CHESTER  
HALL**



London | Liverpool | Kuala Lumpur | Telephone +44(0)151 243 5800

Project Title  
Seel Street, Liverpool  
Drawing Title  
Roof Plan  
Client  
Wolstenhome Square Developments Ltd.  
Drawn By  
JC  
Scale  
1:100 @ A1  
Date  
MAR 2016  
Project No.  
P15-098  
Drawing No.  
02-03-008  
www.fcharchitects.com  
© F.C.H.

# SEEL STREET, LIVERPOOL

## PROPOSED ELEVATIONS

---



- MATERIALS KEY
- 1. Anodised aluminium windows: (Colour: Anolok 543)
  - 2. Glass balustrade with anodised aluminium frame (Colour: Anolok 453)
  - 3. Patternated concrete column
  - 4. Projecting dormer - Copper cladding by Arubis (Nordic Brown Light) or similar approved
  - 5. Perforated panel - Brass cladding by Arubis (Nordic Brass Weathered) or similar approved
  - 6. Perforated balcony - Brass cladding by Arubis (Nordic Weathered) or similar approved
  - 7. Standing seam copper cladding by Arubis (Nordic Brown Light) or similar approved
  - 8. Brickwork soldier course
  - 9. Brickwork
  - 10. Feature concrete lintel
  - 11. Opaque glass
  - 12. Patternated and perforated panel - Brass cladding by Arubis (Nordic Brass Weather) or similar approved
  - 13. Frameless glass balustrade
  - 14. Recess brickwork to plinth
  - 15. Aluminium louvers



FALCONER  
CHESTER  
HALL

FCH

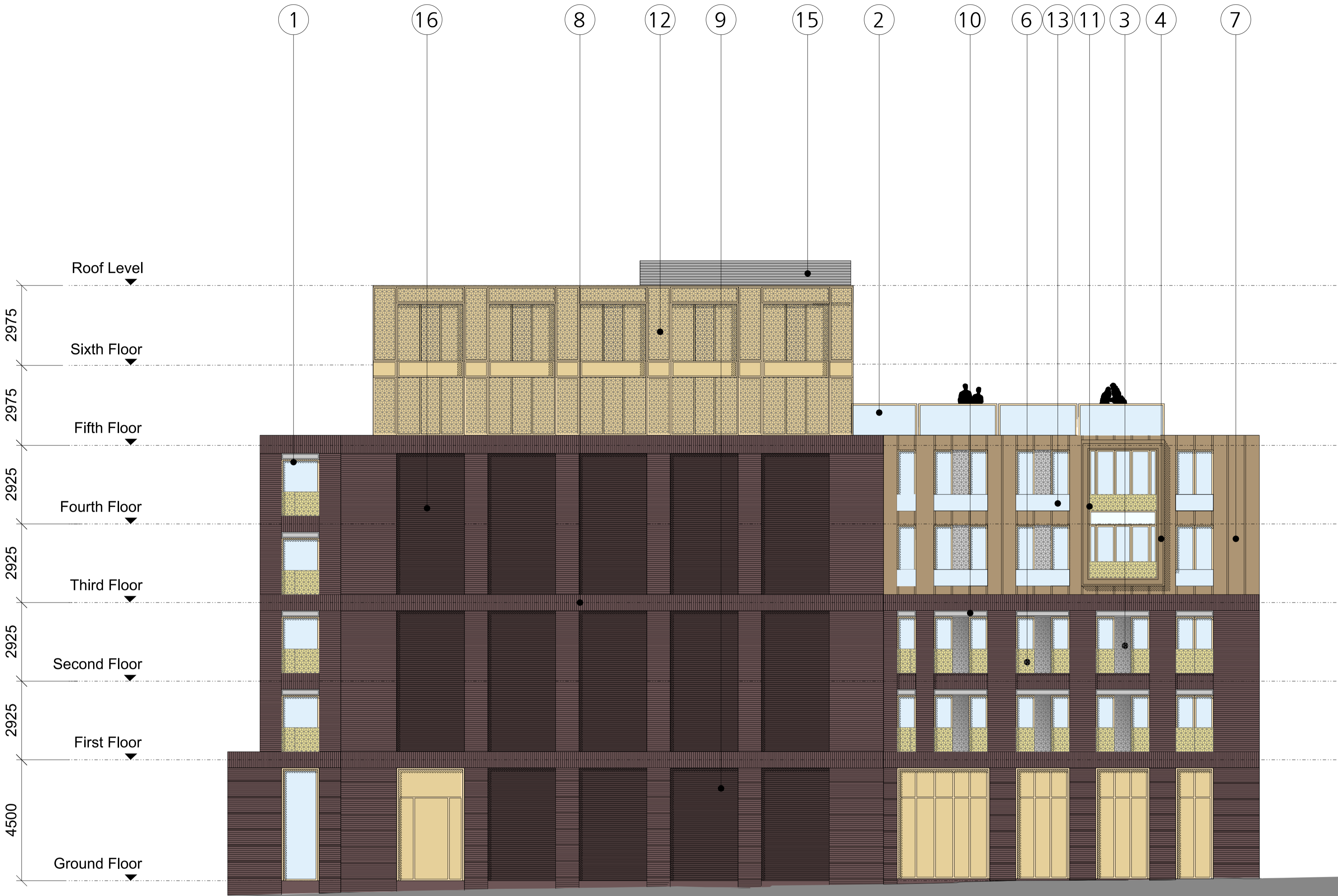
London | Liverpool | Kuala Lumpur | Telephone +44(0)151 243 5800

RevB - 03.03.2016 - Sixth floor changes  
RevA - 05.02.2016 - Fourth floor changes

Project Title  
Seel Street, Liverpool  
Drawing Title  
Elevation 01  
Client  
Wolstenhome Square Developments Ltd.  
Drawn By  
JC  
Date  
MAR 2016  
Project No.  
P15-098  
Drawing No.  
02-05-001B

www.fcharchitects.com  
© F.C.H.

- MATERIALS KEY
1. Anodised aluminium windows: (Colour: Anolok 543)
  2. Glass balustrade with anodised aluminium frame (Colour: Anolok 453)
  3. Patternated concrete column
  4. Projecting dormer - Copper cladding by Arubis (Nordic Brown Light) or similar approved
  5. Perforated panel - Brass cladding by Arubis (Nordic Brass Weathered) or similar approved
  6. Perforated balcony - Brass cladding by Arubis (Nordic Weathered) or similar approved
  7. Standing seam copper cladding by Arubis (Nordic Brown Light) or similar approved
  8. Brickwork soldier course
  9. Brickwork
  10. Feature concrete lintel
  11. Opaque glass
  12. Patternated and perforated panel - Brass cladding by Arubis (Nordic Brass Weather) or similar approved
  13. Frameless glass balustrade
  14. Recess brickwork to plinth
  15. Aluminium louvers
  16. Recess brickwork with different bonding



FALCONER  
CHESTER  
HALL



London | Liverpool | Kuala Lumpur | Telephone +44(0)151 243 5800

Project Title  
Seel Street, Liverpool  
Drawing Title  
Elevation 04  
Client  
Wolstenhome Square Developments Ltd.  
Drawn By  
JC  
Date  
MAR 2016  
Scale  
1:100 @ A1  
Project No.  
P15-098  
Drawing No.  
02-05-004B

www.fcharchitects.com  
© F.C.H.



- MATERIALS KEY
1. Anodised aluminium windows: (Colour: Anolok 543)
  2. Glass balustrade with anodised aluminium frame (Colour: Anolok 453)
  3. Patternated concrete column
  4. Projecting dormer - Copper cladding by Arubis (Nordic Brown Light) or similar approved
  5. Perforated panel - Brass cladding by Arubis (Nordic Brass Weathered) or similar approved
  6. Perforated balcony - Brass cladding by Arubis (Nordic Weathered) or similar approved
  7. Standing seam copper cladding by Arubis (Nordic Brown Light) or similar approved
  8. Brickwork soldier course
  9. Brickwork
  10. Feature concrete lintel
  11. Opaque glass
  12. Patternated and perforated panel - Brass cladding by Arubis (Nordic Brass Weather) or similar approved
  13. Frameless glass balustrade
  14. Recess brickwork to plinth
  15. Aluminium louvers

FALCONER  
CHESTER  
HALL

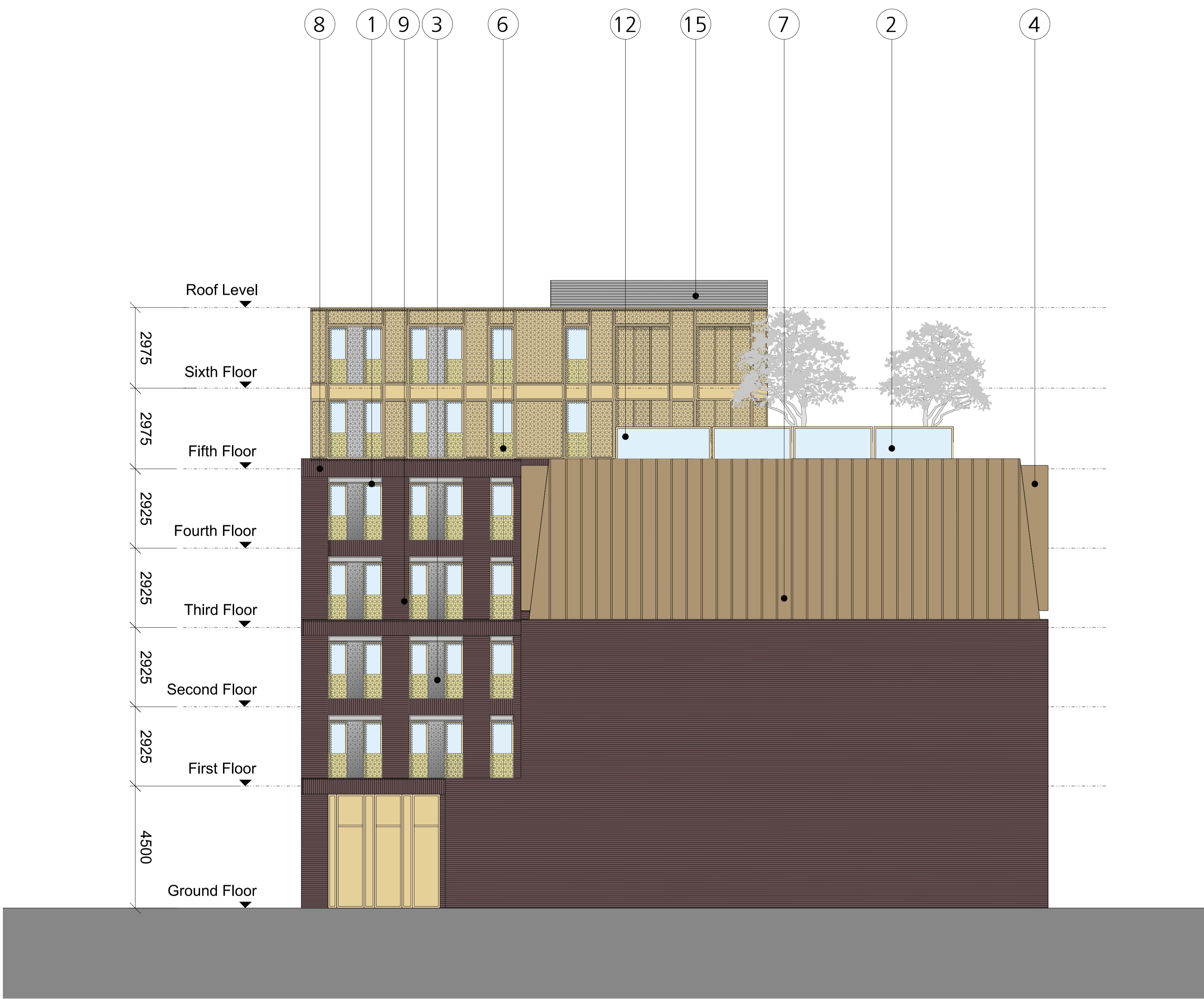


London | Liverpool | Kuala Lumpur | Telephone +44(0)151 243 5800

Project Title  
Seel Street, Liverpool  
Drawing Title  
Elevation 03  
Client  
Wolstenhome Square Developments Ltd.  
Drawn By  
JC  
Date  
MAR 2016  
Scale  
1:100 @ A1  
Project No.  
P15-098  
Drawing No.  
02-05-003A

www.fcharchitects.com  
© F.C.H.

- MATERIALS KEY
- 1. Anodised aluminium windows: (Colour: Anolok 543)
  - 2. Glass balustrade with anodised aluminium frame (Colour: Anolok 453)
  - 3. Patternated concrete column
  - 4. Projecting dormer - Copper cladding by Arubis (Nordic Brown Light) or similar approved
  - 5. Perforated panel - Brass cladding by Arubis (Nordic Brass Weathered) or similar approved
  - 6. Perforated balcony - Brass cladding by Arubis (Nordic Weathered) or similar approved
  - 7. Standing seam copper cladding by Arubis (Nordic Brown Light) or similar approved
  - 8. Brickwork soldier course
  - 9. Brickwork
  - 10. Feature concrete lintel
  - 11. Opaque glass
  - 12. Patternated and perforated panel - Brass cladding by Arubis (Nordic Brass Weather) or similar approved
  - 13. Frameless glass balustrade
  - 14. Recess brickwork to plinth
  - 15. Aluminium louvers



FALCONER  
CHESTER  
HALL



London | Liverpool | Kuala Lumpur | Telephone +44(0)151 243 5800

Project Title		Seel Street, Liverpool
Drawing Title		Elevation 02
Client		Wolstenhome Square Developments Ltd.
Drawn By	Date	Project No.
JC	MAR 2016	P15-098
Scale		Drawing No.
1:100 @ A1		02-05-002A

www.fcharchitects.com  
© F.C.H.

# CONTACT

---

## Falconer Chester Hall

Nº12 Temple Street  
Liverpool L2 5RH

Telephone +44 (0)151 243 5800

Facsimile +44 (0)151 243 5801

[www.fcharchitects.com](http://www.fcharchitects.com)



Design intelligence, commercial flair.

---