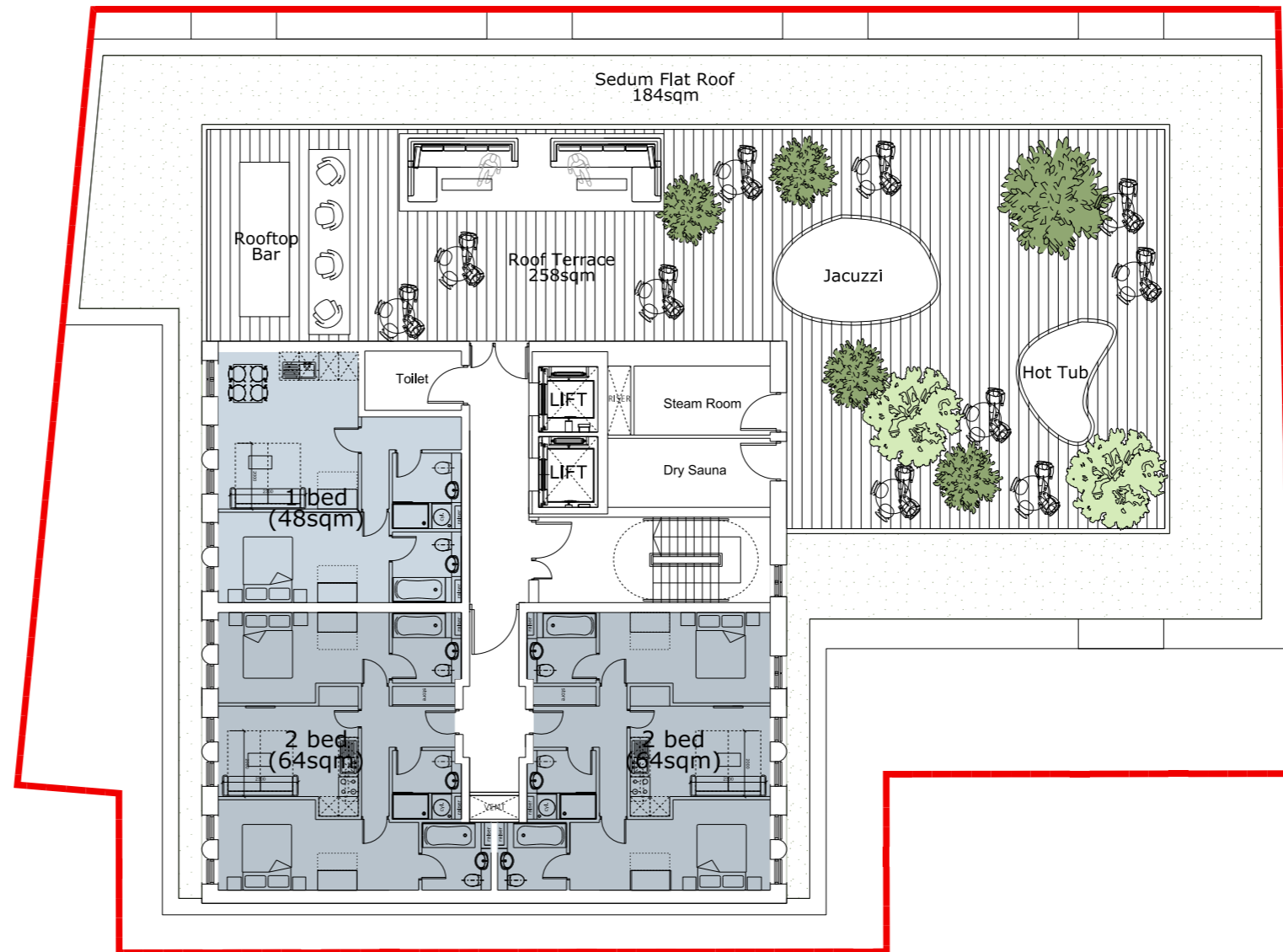


11.0 BUILDING ACCESS STRATEGY

11.3 ROOF TERRACE ACCESS

On the fifth floor there is a roof terrace (258.5sqm) accessible to residents of the hotel. On the terrace there is:

- Jacuzzi
- Steam Room
- Dry Sauna
- Seating area
- Planting
- Rooftop Bar



12.0 ACCESSIBILITY

12.1 LEVEL ACCESS INTO BUILDING

An access strategy has been developed in accordance with Liverpool City Council - Design for Access for All, Supplementary Planning Document.

KEY:

- • • • • Accessible pathways, clear from obstructions with path edges defined.
- ➔ Level access



13.0 FIRE STRATEGY

13.1 EMERGENCY PROVISIONS & MEANS OF ESCAPE



14.0 SCHEDULES

14.1 SCHEDULE OF ACCOMMODATION

Ground Floor:		
Commercial Unit		
Apart Hotel lobby		
Plant room		
Cycle Store		
Hotel/commercial amenities		
First & Second Floor:		
5 x 2 Bedroom apartments (1 DDA apartment)		
2 x 1 Bedroom apartments		
Total: 7 (1 DDA) no. of units per floor		
Third & Fourth Floor:		
5 x 2 Bedroom apartments		
2 x 1 Bedroom apartments		
Total: 7 no of unit per floor		
Fifth & Sixth Floor:		
3 x 2 Bedroom apartments		
1 x 1 Bedroom apartment		
Total: 4 no of unit per floor		
Total		
10 x 1 bed	(24%)	
32 x 2 bed	(76%)	
Total: 42 no of apartments (2 DDA apartments)		

15.0 APPENDIX

15.1 DRAWING SCHEDULE

All drawings submitted as part of the planning application:

P15-098-02-02-001	Site Layout
P15-098-02-03-001	Ground Floor Plan
P15-098-02-03-002	First & Second Floor Plan
P15-098-02-03-004	Third Floor Plan
P15-098-02-03-005	Fourth Floor Plan
P15-098-02-03-006	Fifth Floor Plan
P15-098-02-03-007	Sixth Floor Plan
P15-098-02-03-008	Roof Plan
P15-098-02-05-001	Elevation 01
P15-098-02-05-002	Elevation 02
P15-098-02-05-003	Elevation 03
P15-098-02-05-004	Elevation 04



CONTACT

Falconer Chester Hall

Nº12 Temple Street
Liverpool L2 5RH

Telephone +44 (0)151 243 5800

Facsimile +44 (0)151 243 5801

www.fcharchitects.com



Design intelligence, commercial flair.
