

# 7.0 FACADE DESIGN DEVELOPMENT

## 7.2 ELEVATION DESIGN - PROPOSED DESIGN

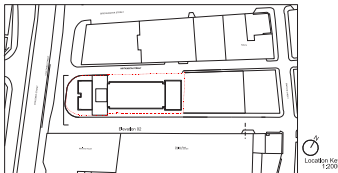
### Proposed West Elevation 02

The west elevation of this scheme employs the use of Corten Steel Frames which Clad the adjacent apartments; giving a strong high quality identity from across the river. The Corten Frame is recessed and holds projecting balconies in order to maximise on views across the River and towards the City centre, create a dynamic frontage when approached from Chaloner Street.

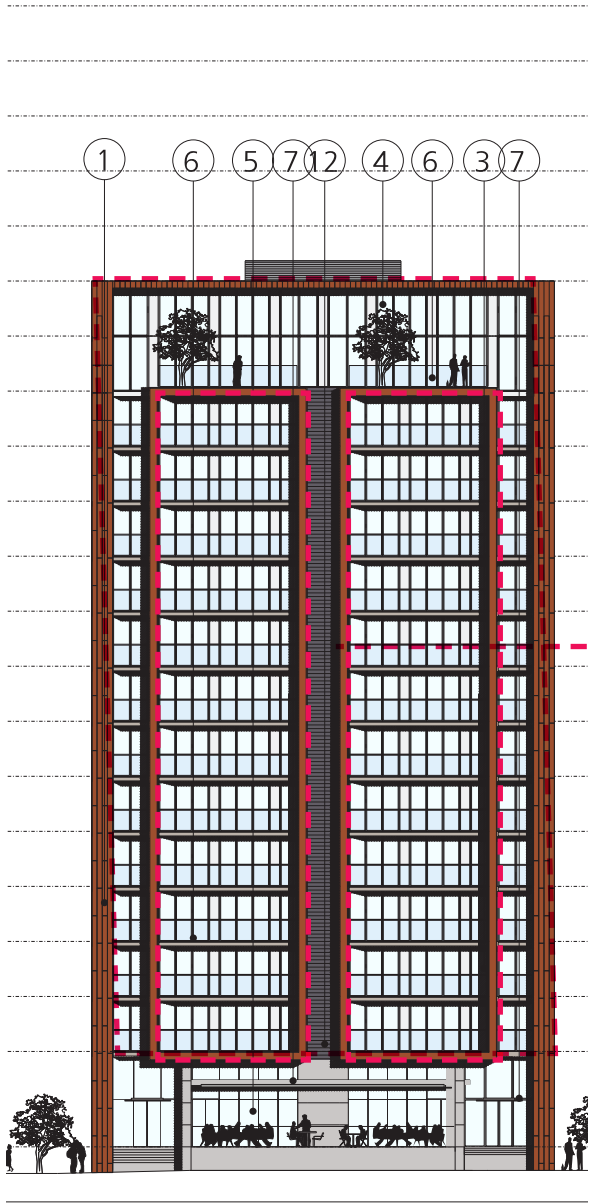
The layout of the glazed balconies will form a “chequered” effect, whereby every other balcony’s balustrade will be etched onto, creating a uniquely-patterned surface.

This layering of textured, etched panelling and smooth glazed balcony doors will provide an aesthetically-pleasing juxtaposition on this main facade, whilst creating a unique visual addition to the infrastructure of the Baltic area.

KEY PLAN



Design intelligence, commercial flair.



A selection of precedent images to illustrate the potential materiality and aesthetic of the corten frame:

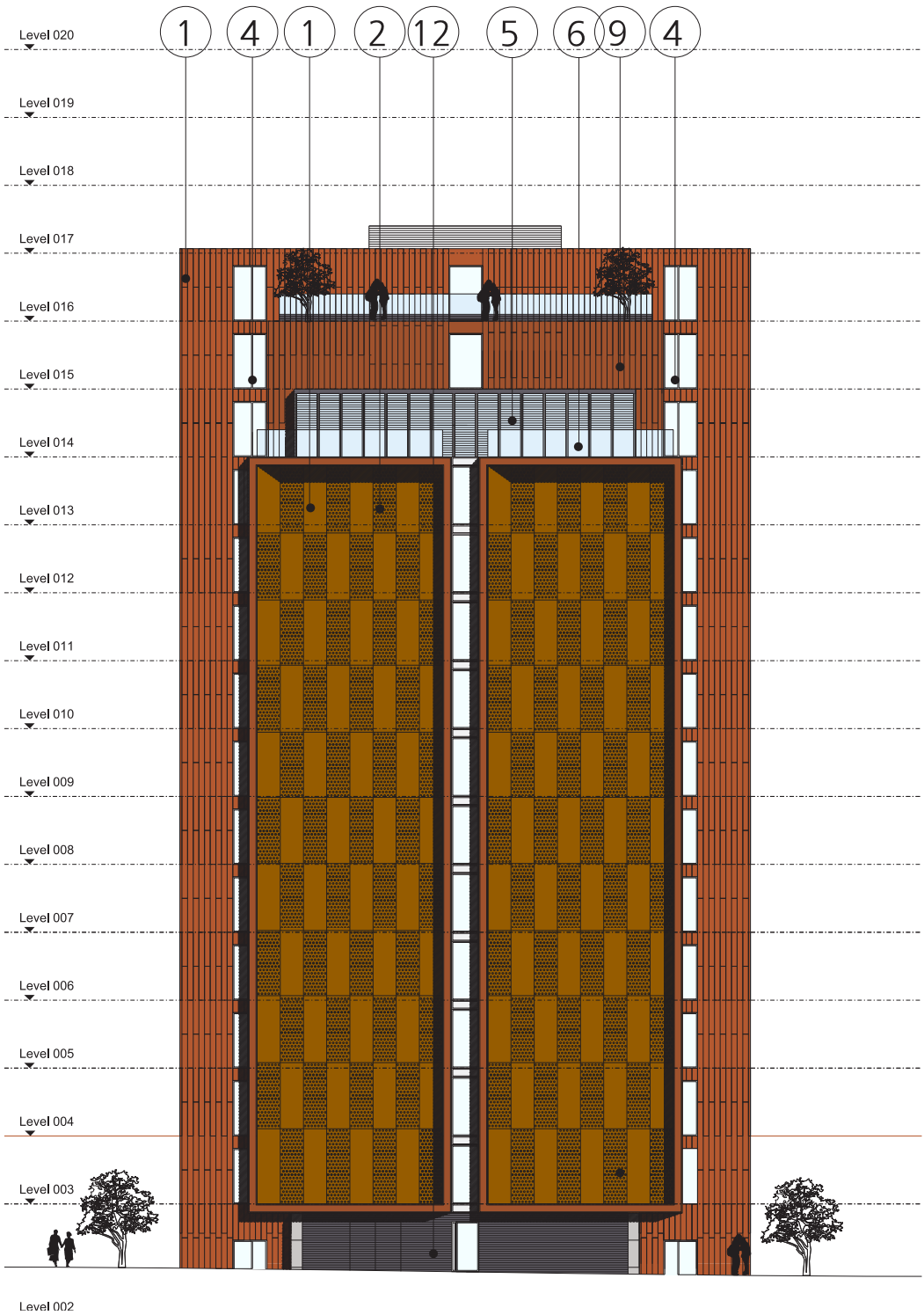
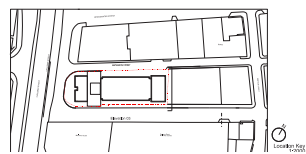
# 7.0 FACADE DESIGN DEVELOPMENT

## 7.2 ELEVATION DESIGN - PROPOSED DESIGN

Proposed East Elevation 02

MATERIALS KEY:

- 1. Corten Steel Cladding
- 2. Perforated Corten Steel Cladding or similar approved
- 3. Shutter Concrete
- 4. Aluminium Windows
- 5. Curtain Walling
- 6. Glass Balustrade
- 7. Glass and steel canopy
- 8. Nordic Brown Light Copper Cladding or similar approved
- 9. Nordic Brown Copper Cladding or similar approved
- 10. Nordic Brass Weather Cladding or similar approved
- 11. Perforated Nordic Brass Weather Cladding or similar approved



# 7.0 FACADE DESIGN DEVELOPMENT

## 7.2 ELEVATION DESIGN - PROPOSED DESIGN

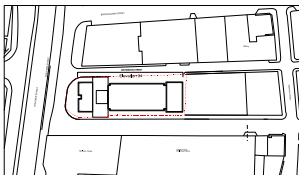
### Proposed North Elevation 04

Structure's form and height has been staggered to break up the roof line when the scheme is viewed from ground level. Where the building steps-back at upper levels provide space for roof terraces for the residents.

A staggered roof line will soften the new structure into the existing landscape of warehouses, whilst the resulting terrace offers views out across the Baltic area.

MATERIALS KEY:

- 1. Corten Steel Cladding
- 2. Perforated Corten Steel Cladding or similar approved
- 3. Shutter Concrete
- 4. Aluminium Windows
- 5. Curtain Walling
- 6. Glass Balustrade
- 7. Glass and steel canopy
- 8. Nordic Brown Light Copper Cladding or similar approved
- 9. Nordic Brown Copper Cladding or similar approved
- 10. Nordic Brass Weather Cladding or similar approved
- 11. Perforated Nordic Brass Weather Cladding or similar approved



Design intelligence, commercial flair.

