

7.0 FACADE DESIGN DEVELOPMENT

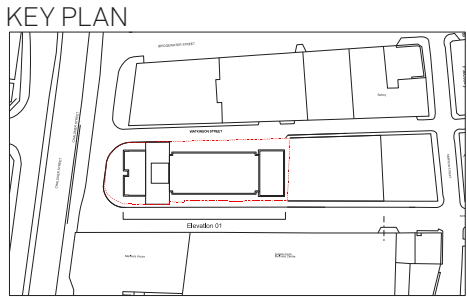
7.2 ELEVATION DESIGN - PROPOSED DESIGN

Proposed South Elevation 01

The adjacent drawings and images, illustrate the idea of the window bays which are applied throughout the project.



A selection of precedent images to illustrate the potential materiality and aesthetic detail each window bay:



7.0 FACADE DESIGN DEVELOPMENT

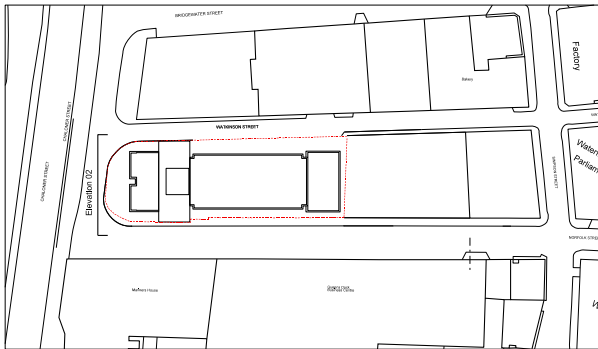
7.2 ELEVATION DESIGN - PROPOSED DESIGN

Proposed West Elevation 02
The Elevation facing Chaloner Street.

MATERIALS KEY:

- 1 Corten Steel
- 2 Zinc/ Aluminium Cladding
- 3 Concrete
- 4 Aluminium Windows
- 5 Curtain Walling
- 6 Glass Balustrade

KEY PLAN



Design intelligence, commercial flair.

