

# 6.0 DESIGN PROPOSAL

## 6.5 PROPOSED ELEVATIONS

6.5.4 - PROPOSED ELEVATION 02



01: Husingore  
Handmade Bricks



02: Perforated bronze  
colour aluminium panels



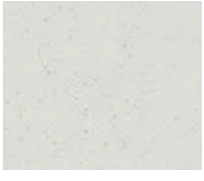
03: Frameless glass  
balustrade



04: Anodised Aluminium  
windows.



05: Precast concrete  
cladding.



06: Sand blasted  
pattern fibre  
reinforced concrete  
panel.



## 6.0 DESIGN PROPOSAL

### 6.6 3D IMAGE IN CONTEXT

The form of this building is unapologetically contemporary but its detailing has drawn its inspiration and influences from the different eras that comprise the area's heritage. The base sets the tone for residential use with a warm, hand-made brick, with a traditional horizontal bonding redolent of the terraced housing that came to the area first. Above, the industrial history of the area is evoked in a mixture of grey and brown, plain and patterned concrete cladding with a vertical emphasis.

The balconies that wrap around the elevations will give the whole building a softer expression and a degree of animation, especially when inhabitants occupy the balconies. They will also restore a degree of horizontality, tempered by a texture generated by perforated metal detailing in the screens.



FCH

Design intelligence, commercial flair.