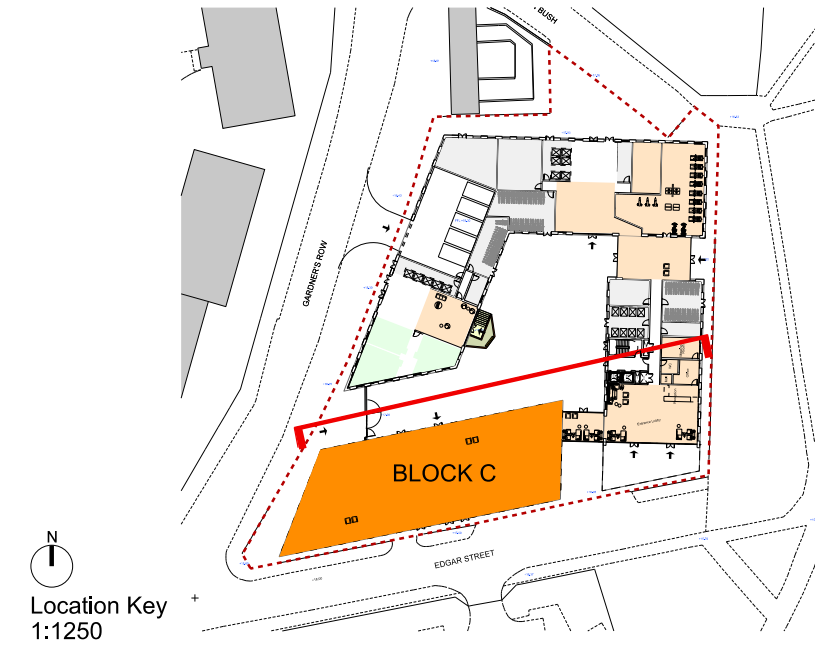


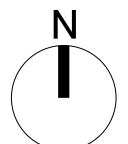
- MATERIALS KEY**
1. Brickwork - stretcher bond (Colour: Silber-Grau)
 2. Brickwork - soldier coarse (Colour: Silber-Grau)
 3. Perforated brickwork (Colour: Gold-White)
 4. Anodised aluminium (Colour: Anolok 545)
 5. Profiled anodised aluminium panel (Colour: Anolok 545)
 6. Anodised aluminium windows (Colour: Anolok 545)
 7. Glazed juliet balcony balustrade
 8. Opaque glass infill panel
 9. Aluminium brise soleil (Colour: Anolok 545)
 10. Aluminium ventilation louvres
 11. Aluminium surround (Colour: Anolok 541)
 12. Aluminium door (Colour: Anolok 541)
 13. Concrete cladding
 14. Frameless glass balustrade
 15. Perforated aluminium balcony
 16. Glazed curtain walling



Reception Lobby

Ground Floor

FALCONER CHESTER HALL



Rev.C - 15.02.2016 - Elevation amended
Rev.B - 11.02.2016 - Elevation amended
Rev.A - 12.01.2016 - Elevation amended
Project Title
Bevington Bush/ Gardner's Row, Liverpool
Drawing Title
Elevation 02 - Block C
Client
Jamworks
Drawn By
JC
Date
FEB 2016
Scale
1:100 @ A1
No 12 Temple Street, Liverpool, L2 5RH Telephone +44(0)151 243 5800
5th Floor, 22 Soho Square, London, W1D 4NS Telephone +44(0) 203 137 7393
Project No.
P14-092
Drawing No.
02-05-C-002C
www.fcharchitects.com
© F.C.H.