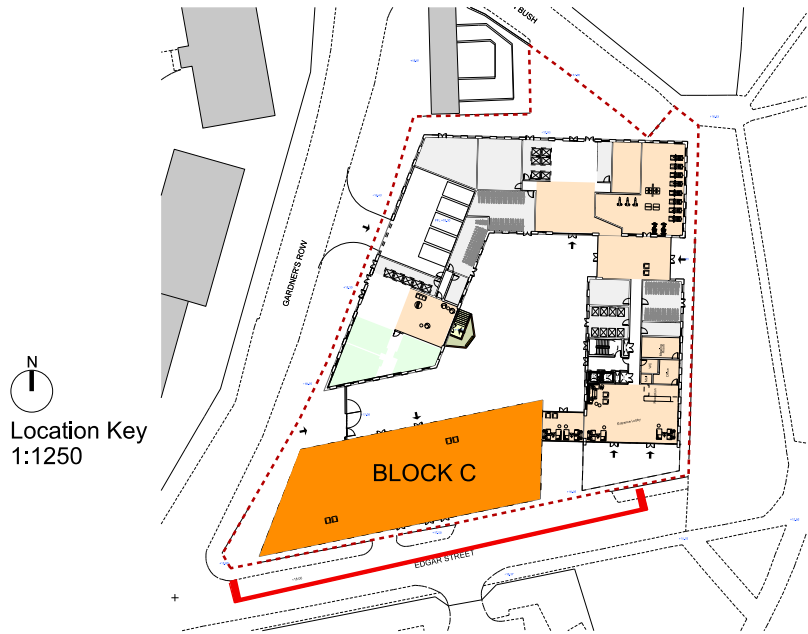


- MATERIALS KEY
- 1. Brickwork - stretcher bond (Colour: Silber-Grau)
  - 2. Brickwork - soldier coarse (Colour: Silber-Grau)
  - 3. Perforated brickwork (Colour: Gold-White)
  - 4. Anodised aluminium (Colour: Anolok 545)
  - 5. Profiled anodised aluminium panel (Colour: Anolok 545)
  - 6. Anodised aluminium windows (Colour: Anolok 545)
  - 7. Glazed juliet balcony balustrade
  - 8. Opaque glass infill panel
  - 9. Aluminium brise soleil (Colour: Anolok 545)
  - 10. Aluminium ventilation louvres
  - 11. Aluminium surround (Colour: Anolok 541)
  - 12. Aluminium door (Colour: Anolok 541)
  - 13. Concrete cladding
  - 14. Frameless glass balustrade
  - 15. Perforated aluminium balcony
  - 16. Glazed curtain walling



Rev C - 15.02.2016 - Elevation amended  
Rev B - 11.02.2016 - Elevation amended  
Rev A - 12.01.2016 - Elevation amended

Project Title  
Bevington Bush/ Gardner's Row, Liverpool

Drawing Title  
Elevation 01 - Block C

Client  
Jamworks

Drawn By  
JC

Date  
FEB 2016

Scale  
1:100 @ A1

No 12 Temple Street, Liverpool, L2 5RH Telephone +44(0)151 243 5800  
5th Floor, 22 Soho Square, London, W1D 4NS Telephone +44(0) 203 137 7393

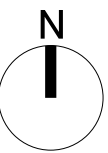
Project No.  
P14-092

Drawing No.  
02-05-C-001C

www.fcharchitects.com  
© F.C.H.

FALCONER  
CHESTER  
HALL

FCH



12

10

16