

1 2 4 5 6 11 12 7 9 13 10

- MATERIALS KEY
- 1. Brickwork - stretcher bond (Colour: Gold-White)
 - 2. Brickwork - soldier coarse (Colour: Gold-White)
 - 3. Perforated brickwork (Colour: Gold-White)
 - 4. Anodised aluminium (Colour: Anolok 545)
 - 5. Profiled anodised aluminium panel (Colour: Anolok 545)
 - 6. Anodised aluminium windows (Colour: Anolok 545)
 - 7. Glazed juliet balcony balustrade
 - 8. Opaque glass infill panel
 - 9. Aluminium brise soleil (Colour: Anolok 545)
 - 10. Aluminium ventilation louvres
 - 11. Aluminium surround (Colour: Anolok 541)
 - 12. Aluminium door (Colour: Anolok 541)
 - 13. Concrete cladding
 - 14. Frameless glass balustrade
 - 15. Perforated aluminium balcony
 - 16. Glazed curtain walling

Roof Level

Thirteenth Floor

Twelfth Floor

Eleventh Floor

Tenth Floor

Ninth Floor

Eight Floor

Seventh Floor

Sixth Floor

Fifth Floor

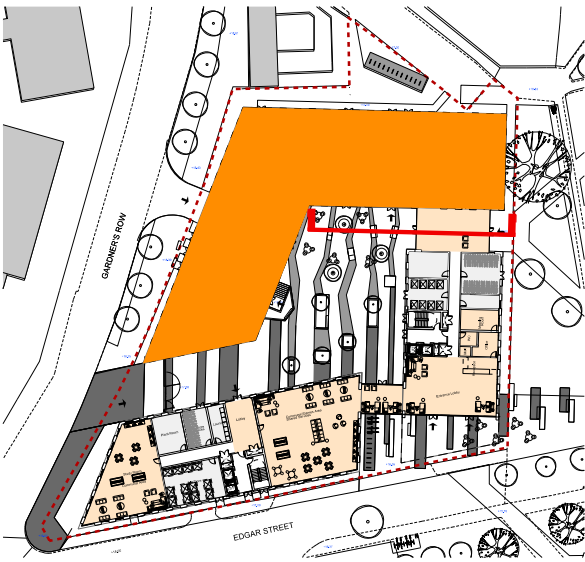
Fourth Floor

Third Floor

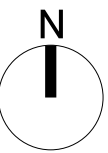
Second Floor

First Floor

Ground Floor



FALCONER
CHESTER
HALL



No 12 Temple Street, Liverpool, L2 5RH Telephone +44(0)151 243 5800
5th Floor, 22 Soho Square, London, W1D 4NS Telephone +44(0) 203 137 7393

Project Title
Bevington Bush/ Gardner's Row, Liverpool
Drawing Title
Elevation 04 - Block A
Client
Jamworks
Drawn By
JC
Date
14.08.2015
Scale
1:100 @ A1
Project No.
P14-092
Drawing No.
02-05-A-004
www.fcharchitects.com
© F.C.H.