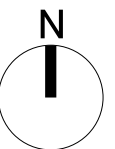




- MATERIALS KEY**
- 1. Brickwork - stretcher bond (Colour: Gold-White)
 - 2. Brickwork - soldier coarse (Colour: Gold-White)
 - 3. Perforated brickwork (Colour: Gold-White)
 - 4. Anodised aluminium (Colour: Anolok 545)
 - 5. Profiled anodised aluminium panel (Colour: Anolok 545)
 - 6. Anodised aluminium windows (Colour: Anolok 545)
 - 7. Glazed Juliet balcony balustrade
 - 8. Opaque glass infill panel
 - 9. Aluminium brise soleil (Colour: Anolok 545)
 - 10. Aluminium ventilation louvres
 - 11. Aluminium surround (Colour: Anolok 541)
 - 12. Aluminium door (Colour: Anolok 541)
 - 13. Concrete cladding
 - 14. Frameless glass balustrade
 - 15. Perforated aluminium balcony
 - 16. Glazed curtain walling



**FALCONER
CHESTER
HALL**



No 12 Temple Street, Liverpool, L2 5RH Telephone +44(0)151 243 5800
5th Floor, 22 Soho Square, London, W1D 4NS Telephone +44(0) 203 137 7393

Project Title
Bevington Bush/ Gardner's Row, Liverpool
Drawing Title
Elevation 02 - Block A
Client
Jamworks
Drawn By
JC
Date
14.08.2015
Scale
1:100 @ A1

Project No.
P14-092
Drawing No.
02-05-A-002
www.fcharchitects.com
© F.C.H.