

9.0 BUILDING ACCESS STRATEGY

9.3 SERVICING & REFUSE STRATEGY



10.0 ACCESSIBILITY

10.1 LEVEL ACCESS INTO BUILDING

An access strategy has been developed in accordance with Liverpool City Council - Design for Access for All, Supplementary Planning Document.

KEY:
..... Accessible pathways, clear from obstructions with path edges defined.



11.0 SCHEDULES

11.1 ACCOMMODATION SCHEDULE

Block A

Ground Floor Level

3 Studio Apartments

Entrance Lobby / Foyer X 2

Gym

Laundry X 2

Bin Store X 2

1. Bike Store - 66 Spaces

2. Bike Store - 36 Spaces

Parking - 5 Spaces

Plant

Sub Station

1st Floor Level

21 Studio Apartments

3 1-Bedroom Apartments

2nd Floor Level

21 Studio Apartments

3 1-Bedroom Apartments

3rd Floor Level

21 Studio Apartments

3 1-Bedroom Apartments

4th Floor Level

21 Studio Apartments

3 1-Bedroom Apartments

5th Floor Level

21 Studio Apartments

3 1-Bedroom Apartments

6th Floor Level

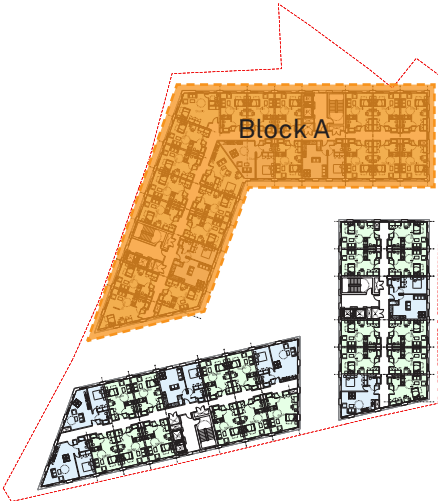
21 Studio Apartments

3 1-Bedroom Apartments

TOTAL

- Approximately 129 no. Studio Apartments (c. 30sq.m./ 322 sq.ft.)
- Approximately 18 no. Suites (50 sq.m./ 538 sq.ft)
- Approximately 147 Apartments

Note: All figures/areas are approximate and subject to measured survey, planning/building regulations approval and detailed design.



11.0 SCHEDULES

11.2 ACCOMMODATION SCHEDULE

Block B

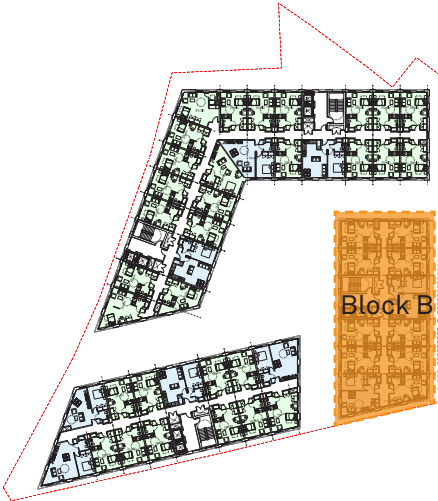
- Ground Floor Level
- Entrance Lobby / Foyer
- Meeting Room / Office
- Laundry
- Bin Store
- Bike Store - 56 Spaces
- Plant
- 1st Floor Level
- 8 Studio Apartments
- 1 1-Bedroom Apartments
- 2nd Floor Level
- 9 Studio Apartments
- 2 1-Bedroom Apartments
- 3rd Floor Level
- 9 Studio Apartments
- 2 1-Bedroom Apartments
- 4th Floor Level
- 9 Studio Apartments
- 2 1-Bedroom Apartments
- 5th Floor Level
- 9 Studio Apartments
- 2 1-Bedroom Apartments
- 6th Floor Level
- 9 Studio Apartments
- 2 1-Bedroom Apartments
- 7th Floor Level
- 9 Studio Apartments
- 2 1-Bedroom Apartments
- 8th Floor Level
- 4 Studio Apartments
- 1 1-Bedroom Apartments
- Communal Lounge
- 9th Floor Level
- 9 Studio Apartments
- 2 1-Bedroom Apartments

- 10th Floor Level
- 9 Studio Apartments
- 2 1-Bedroom Apartments
- 11th Floor Level
- 9 Studio Apartments
- 2 1-Bedroom Apartments
- 12th Floor Level
- 9 Studio Apartments
- 2 1-Bedroom Apartments
- 11th Floor Level
- 6 Studio Apartments
- 1 1-Bedroom Apartments
- Roof Terrace

TOTAL

- Approximately 108 no. Studio Apartments (c. 30sq.m./ 322 sq.ft.)
- Approximately 23 no. Suites (50 sq.m./ 538 sq.ft)
- Approximately 131 Apartments

Note: All figures/areas are approximate and subject to measured survey, planning/building regulations approval and detailed design.



11.0 SCHEDULES

11.3 ACCOMMODATION SCHEDULE

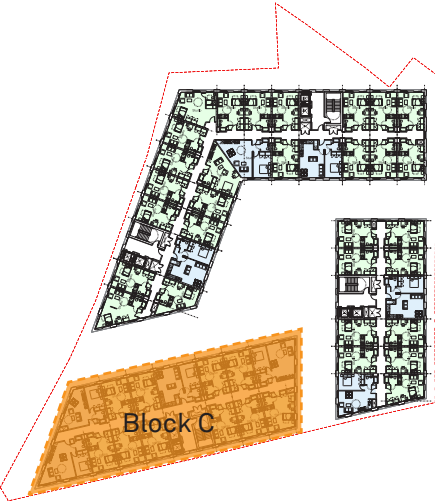
Block C

- Ground Floor Level
- Entrance Lobby / Foyer
- Communal / Games Area
- Laundry
- Bin Store
- Bike Store - 30 Spaces
- Plant
- 1st Floor Level
- 10 Studio Apartments
- 4 1-Bedroom Apartments
- 2nd Floor Level
- 10 Studio Apartments
- 4 1-Bedroom Apartments
- 3rd Floor Level
- 10 Studio Apartments
- 4 1-Bedroom Apartments
- 4th Floor Level
- 10 Studio Apartments
- 4 1-Bedroom Apartments
- 5th Floor Level
- 10 Studio Apartments
- 4 1-Bedroom Apartments
- 6th Floor Level
- 10 Studio Apartments
- 4 1-Bedroom Apartments
- 7th Floor Level
- 8 Studio Apartments
- 4 1-Bedroom Apartments
- Roof Terrace
- 8th Floor Level
- 2 Studio Apartments
- 1 1-Bedroom Apartments
- Roof Terrace

TOTAL

- Approximately 70 no. Studio Apartments (c. 30sq.m./ 322 sq.ft.)
- Approximately 29 no. Suites (50 sq.m./ 538 sq.ft)
- Approximately 99 Apartments

Note: All figures/areas are approximate and subject to measured survey, planning/building regulations approval and detailed design.



11.0 SCHEDULES

11.4 ACCOMMODATION SCHEDULE

Block A

TOTAL

- Approximately 129 no. Studio Apartments (c. 30sq.m./ 322 sq.ft.)
- Approximately 18 no. Suites (50 sq.m./ 538 sq.ft)
- Approximately 147 Apartments

Block B

TOTAL

- Approximately 108 no. Studio Apartments (c. 30sq.m./ 322 sq.ft.)
- Approximately 23 no. Suites (50 sq.m./ 538 sq.ft)
- Approximately 131 Apartments

Block C

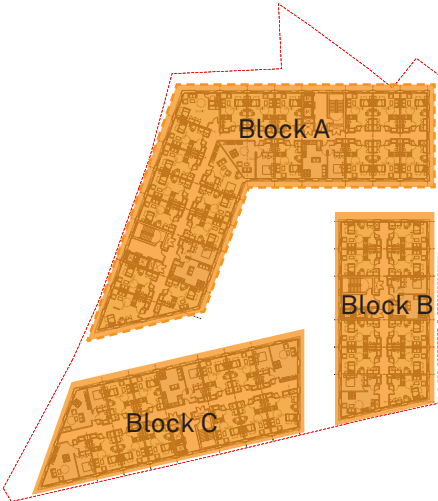
TOTAL

- Approximately 70 no. Studio Apartments (c. 30sq.m./ 322 sq.ft.)
- Approximately 29 no. Suites (50 sq.m./ 538 sq.ft)
- Approximately 99 Apartments

All Blocks

- Approximately 307 no. Studio Apartments (c. 30sq.m./ 322 sq.ft.)
- Approximately 70 no. Suites (50 sq.m./ 538 sq.ft)
- Approximately 377 Apartments

Note: All figures/areas are approximate and subject to measured survey, planning/building regulations approval and detailed design.



12.0 APPENDIX

12.1 LANDSCAPE CONCEPT



[PL1488-ID-001-01]
[Initial response]

BEVINGTON BUSH
DESIGN APPROACH

