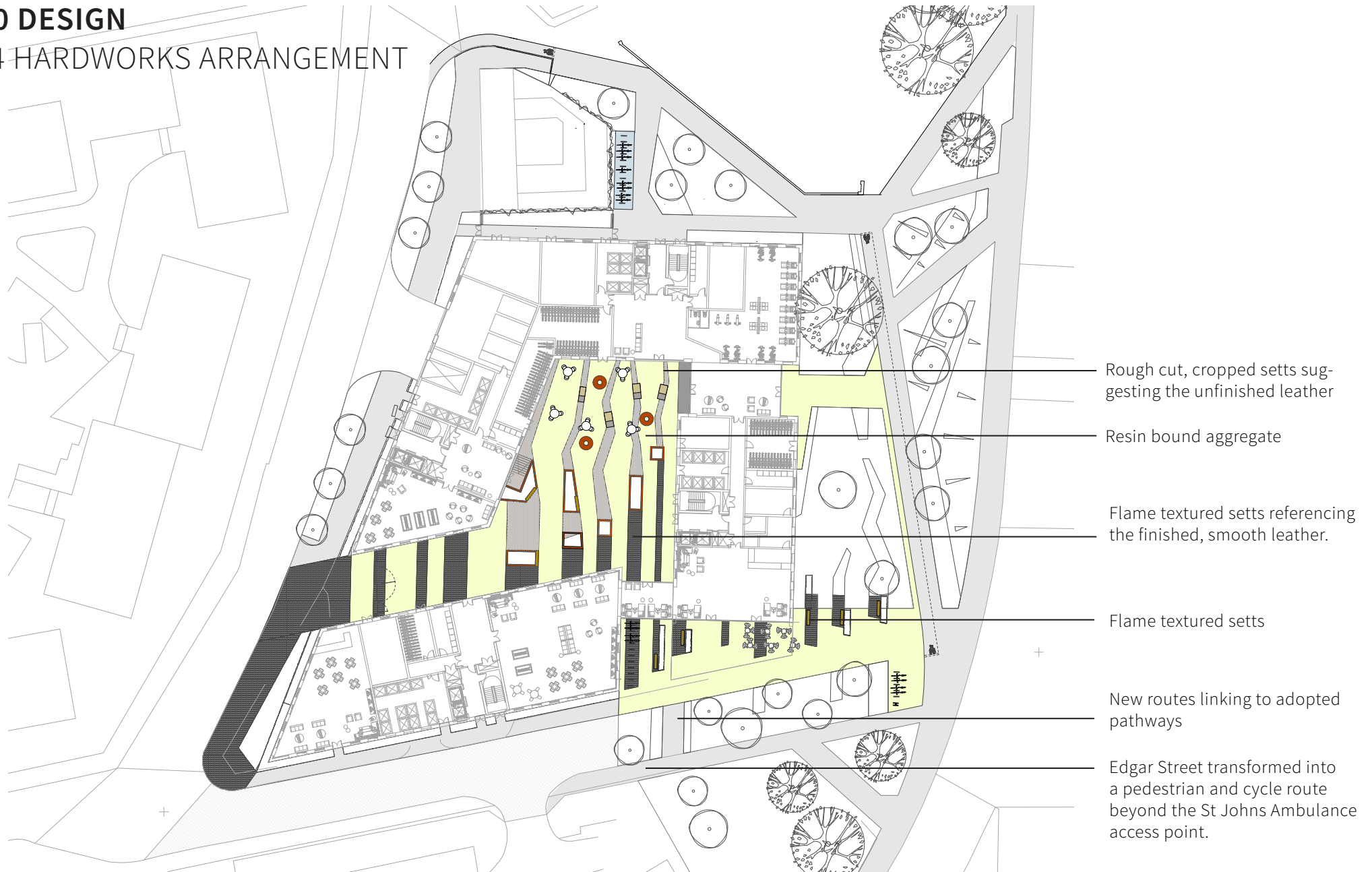


3.0 DESIGN

3.4 HARDWORKS ARRANGEMENT



3.0 DESIGN

3.5 HARDWORKS MATERIAL PALLETTE



Formal Smooth Granite
setts



Resin bound surfacing



Informal Cropped Granite
setts

3.0 DESIGN

3.6 SOFTWORKS ARRANGEMENT



3.0 DESIGN

3.7 PLANT SPECIES



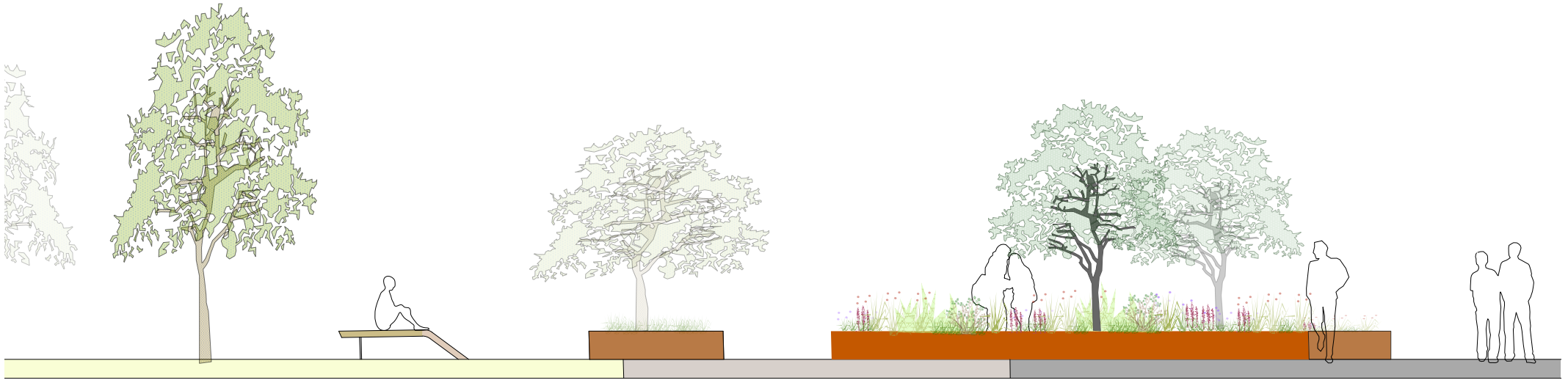
A strong base of evergreen planting is proposed within the courtyard for year round structure and presence. Colour is injected through the seasons with spring and summer flowering plants, further animating the space.



Evergreen tree planting is being considered to create some year round screening from Scotland Road.

3.0 DESIGN

3.8 THE COURTYARD



Seating clusters sit within the banding. Differing material finishes highlight the concept of the unprocessed rough leather and the processed smooth output.

The seating elements relate directly to the bands and lift up from the surface



3.0 DESIGN

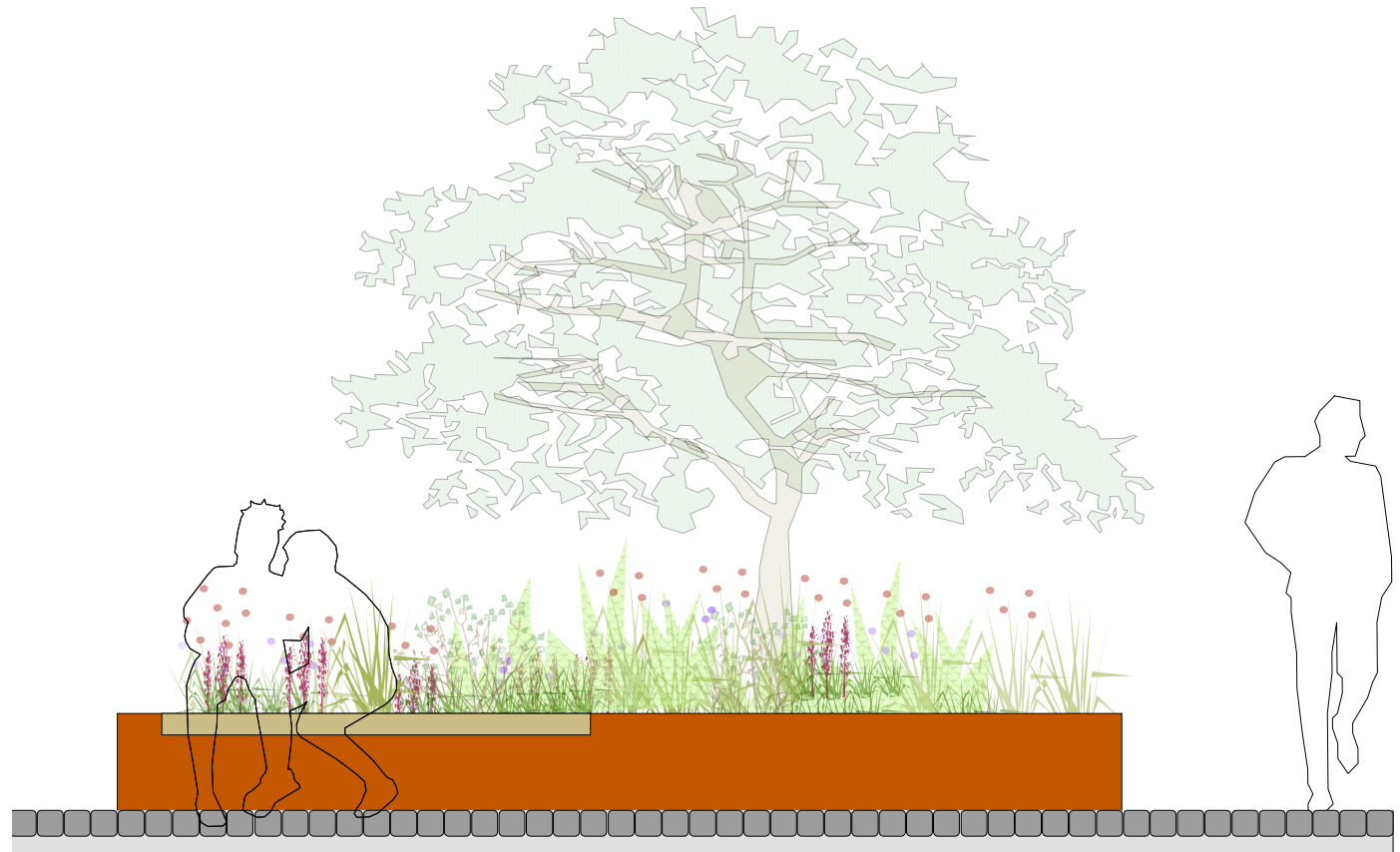
3.9 RAISED PLANTING ELEMENTS



Corten is considered as a material- relating back to the industrial character of the sites past.

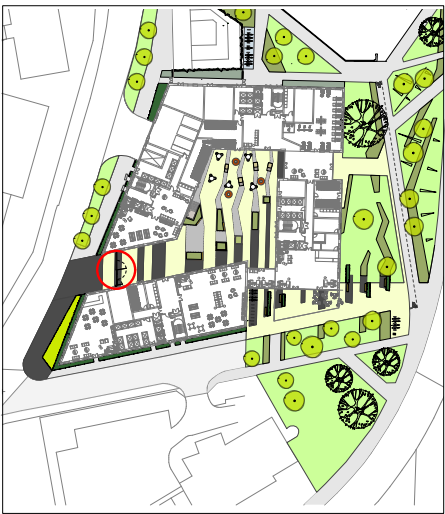


Planter edging and seating element.

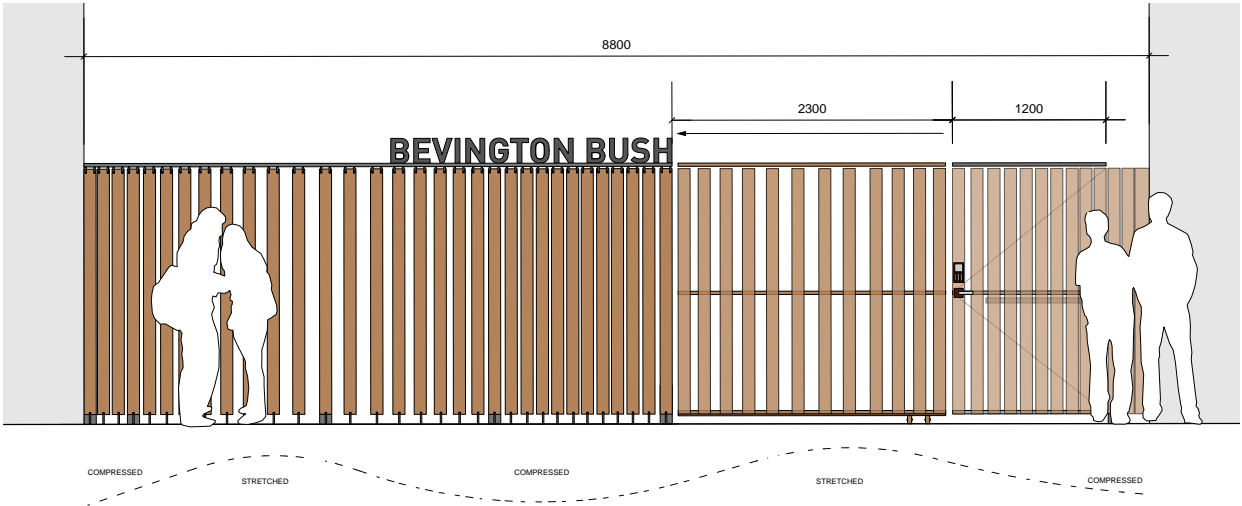


3.0 DESIGN

3.10 BOUNDARY TREATMENT



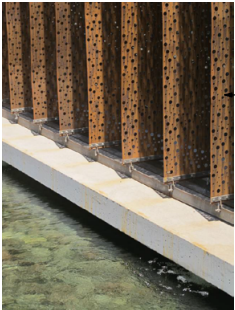
Elevation



Scale and Massing
Elevation. 1:100



PRECEDENT: FORM



Dangling sheets to
resemble drying leather

Scatches, cuts and marks on leather
reflected in design

