



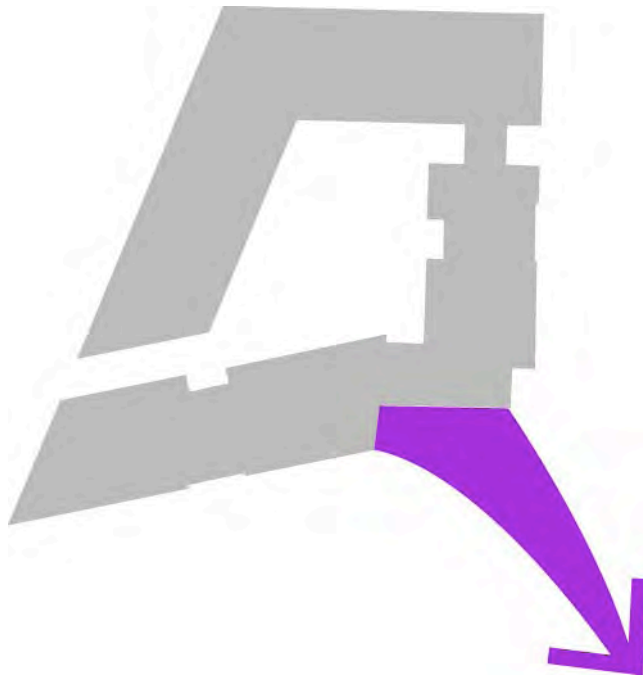
# 1.0

## ANALYSIS

UNDERSTANDING THE SITE

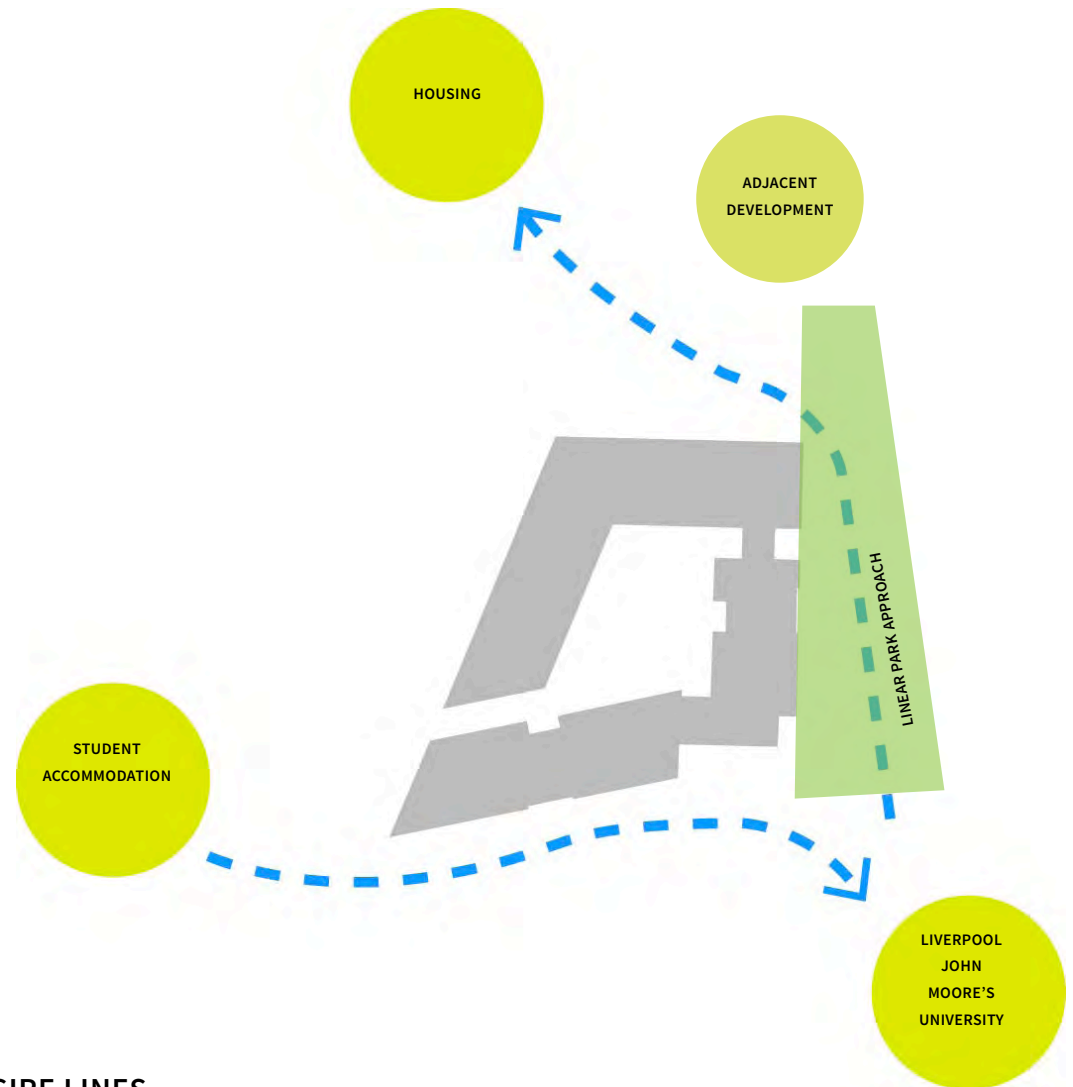
# 1.0 ANALYSIS

## 1.1 SPATIAL ANALYSIS



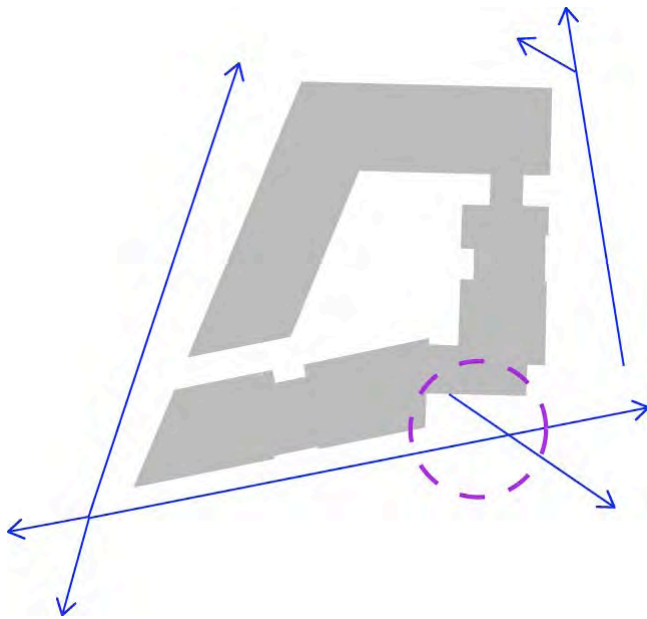
### UNIVERSITY LINK

The existing strong link to the University must be enhanced and considered within the design.



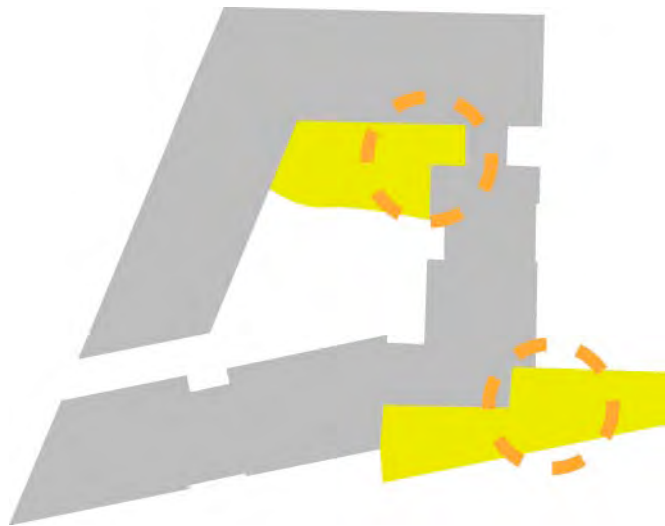
### DESIRE LINES

Students and nearby residents, currently cut through Edgar street and across the green by Scotland Road to get to and from Liverpool John Moore's University campus. Although these desire lines are outside the site boundary, initial considerations look at creating better links and enhancing the public realm as part of the wider street scene improvements



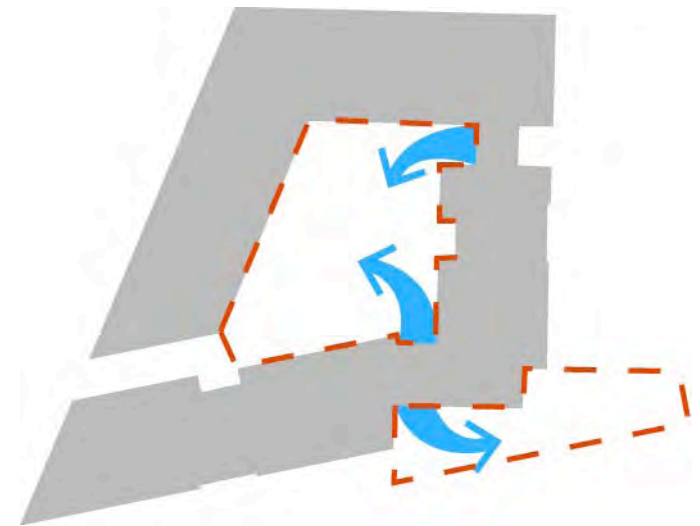
### EXTERNAL IMPROVEMENTS

Responding to the existing desire lines through and around the site it is possible to better integrate the scheme into the wider public realm.



### SUN SPOTS

Due to the height of the buildings the areas that receive the most sun should be the most flexible, ensuring their use and popularity in warm weather.



### SPILL OUT SPACES

The two spill out spaces on site are the internal courtyard as well as the small plaza space outside the main entrance.



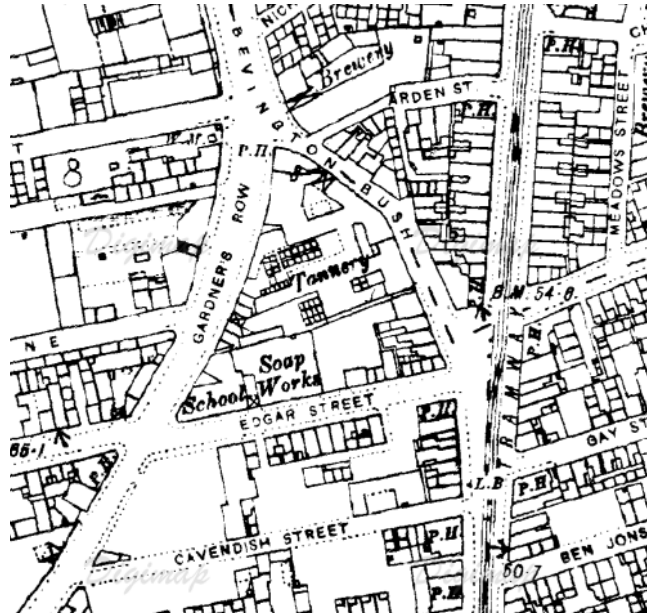
# 1.0 ANALYSIS

## 1.2 HISTORY

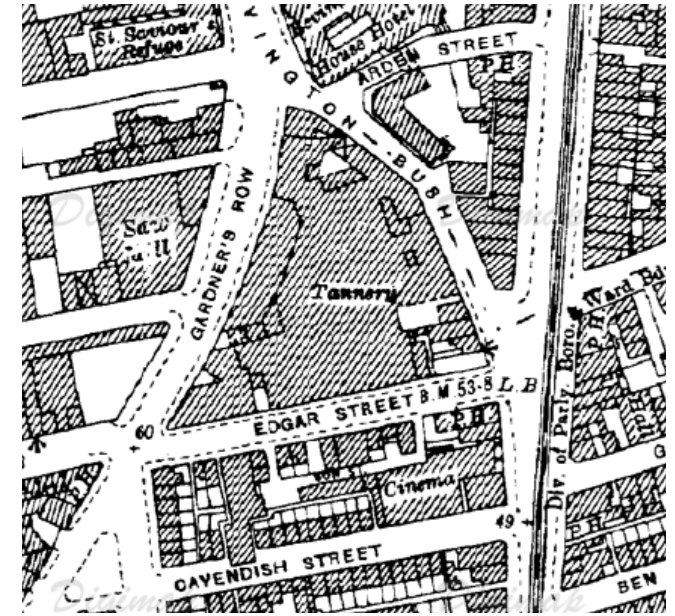
1890-1970

Historic maps of the site show that over the past century the site has been used predominately as a tannery, where animal hides are treated and processed into leather. In 1890 the site was also home to a school and a soap works however these establishments were soon dissolved by the expansion of the tannery. In 1960 the site was still used for industrial purposes but it is less clear what these purposes were.

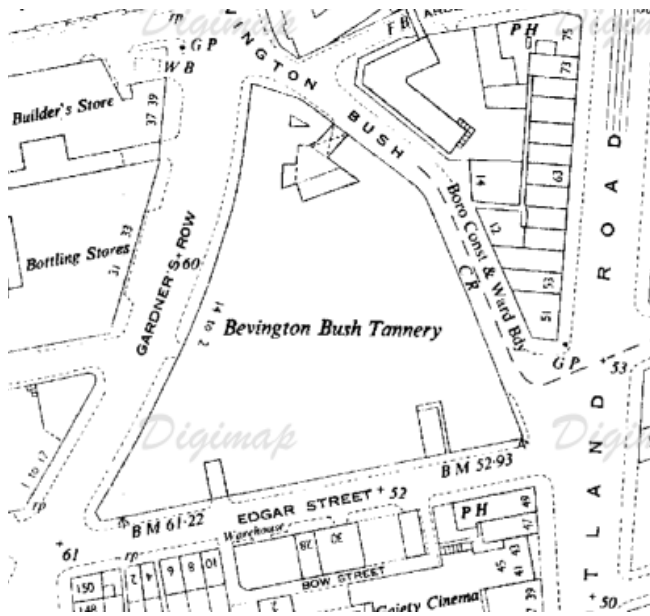
The new courtyard design will pull inspiration from the past, taking into consideration the predominately industrial use of the site over time, and incorporating this character into the landscape.



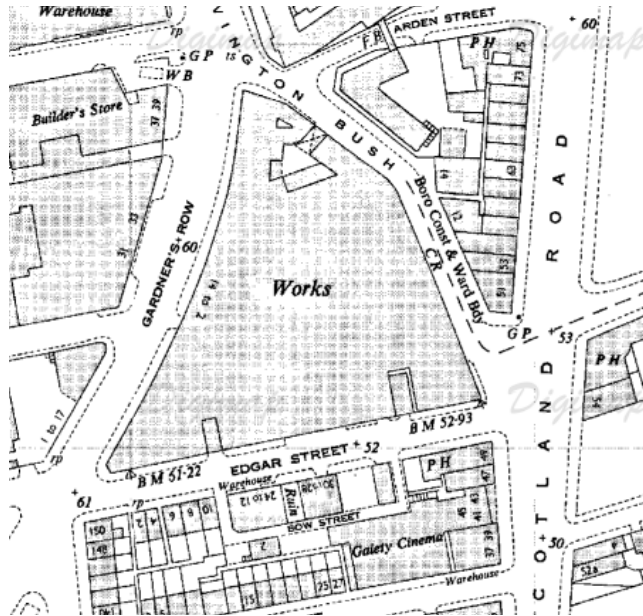
1890



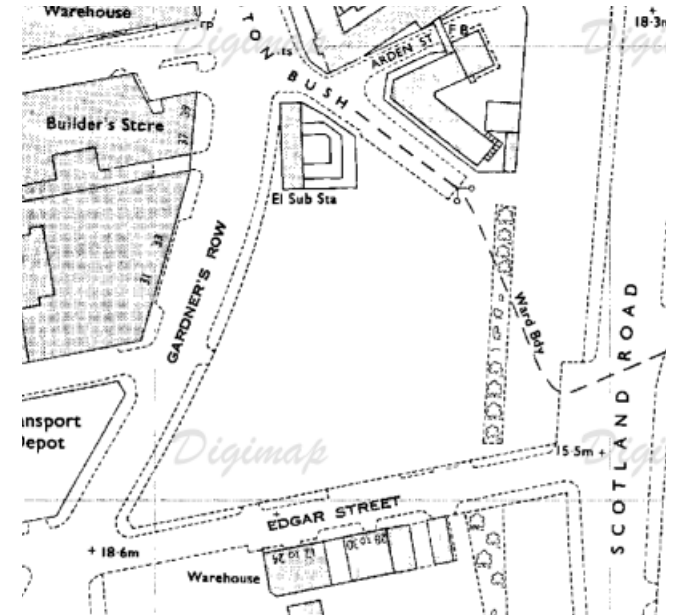
1920



1950



1960



1970

## 1.0 ANALYSIS

### 1.3 HISTORIC PROCESS



#### LEATHER

Tanneries take raw animal hides and transform them into leather, a popular and versatile material. The design concept is taken from the process of formalising this material into a product; going from the wild rugged animal hide to the softer more supple leather. This process of transforming the leather from raw to managed or informal to formal is the main driver behind the design.

# 2.0

## CONCEPT

### CONTEXTUAL DESIGN

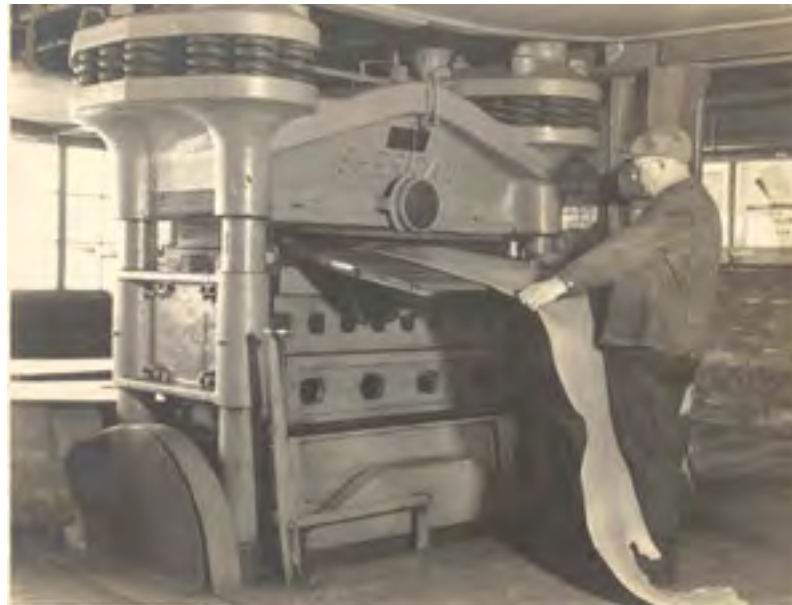


## 2.0 DESIGN CONCEPT

### 2.1 CONCEPT

#### PULLING FROM THE PAST

The process of treating leather contains many different stages and equipment, in particular whringing, where the leather was rolled between two cylinders to flatten and smooth it.

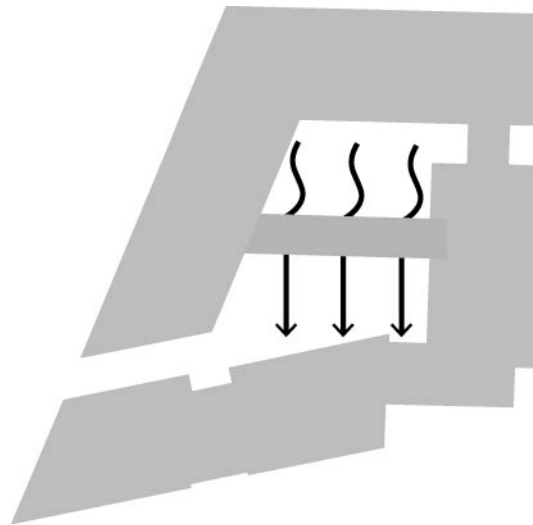


## 2.0 DESIGN CONCEPT

### 2.2 APPROACH

#### PULLING FROM THE PAST

The process of whringing leather has informed our design arrangement, the untreated leather creates rough and irregular edges, repeated in the geometries of the courtyard. As the leather is treated it becomes smoother, straighter and more uniform. This approach is reflected as you move through the courtyard. The geometries become straighter and parallel with each other, creating more regular forms and a more formal space.



**INFORMAL SPACE**

**FORMAL SPACE**



# 3.0

## **SITE PROPOSALS**

### THE EMERGING MASTERPLAN



## 3.0 DESIGN

### 3.1 WIDER MASTERPLAN



## 3.0 DESIGN

### 3.2 GENERAL ARRANGEMENT

Gardners Row to provide a consistent streetscape approach between both developments

Combined approach to the 'Parkland Edge' to tie in with adjacent development.

Informal space with loose furniture

Formal space with corten planters and shade tolerant planting

Spill out space from the communal areas

Adopted landscape tying into the rest of the masterplan





## 3.0 DESIGN

### 3.3 INSPIRATION



**Arboretum Klinikum-**

An effective courtyard design which centres on contrasting materials and linear geometries



**Floor Works-**

A beautiful garden space with strong linear design, integrating industrial materials with soft planting to form a modern courtyard design



**Mathildeplein- Mixed planting**

Colourful and verdant planting with year round interest.



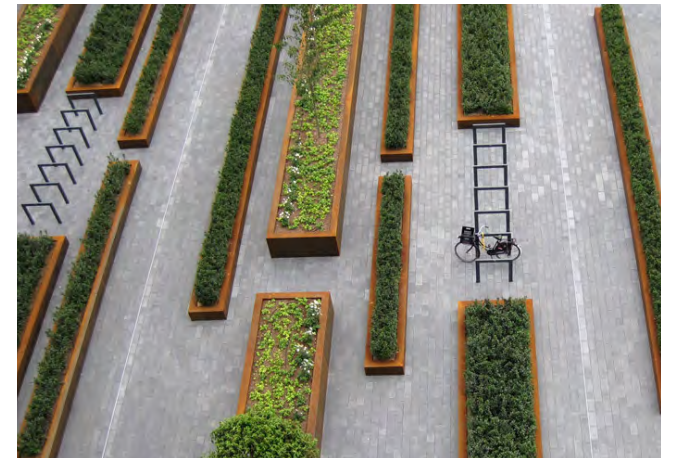
**High Line-**

Elegant feature seating that emerges from the landscape



**Treasury Courtyard-**

Informal and movable seating gives flexibility to the space and its uses



**Mathildeplein- Raised Steel planters**

Strong axes formed through bespoke corten raised planters