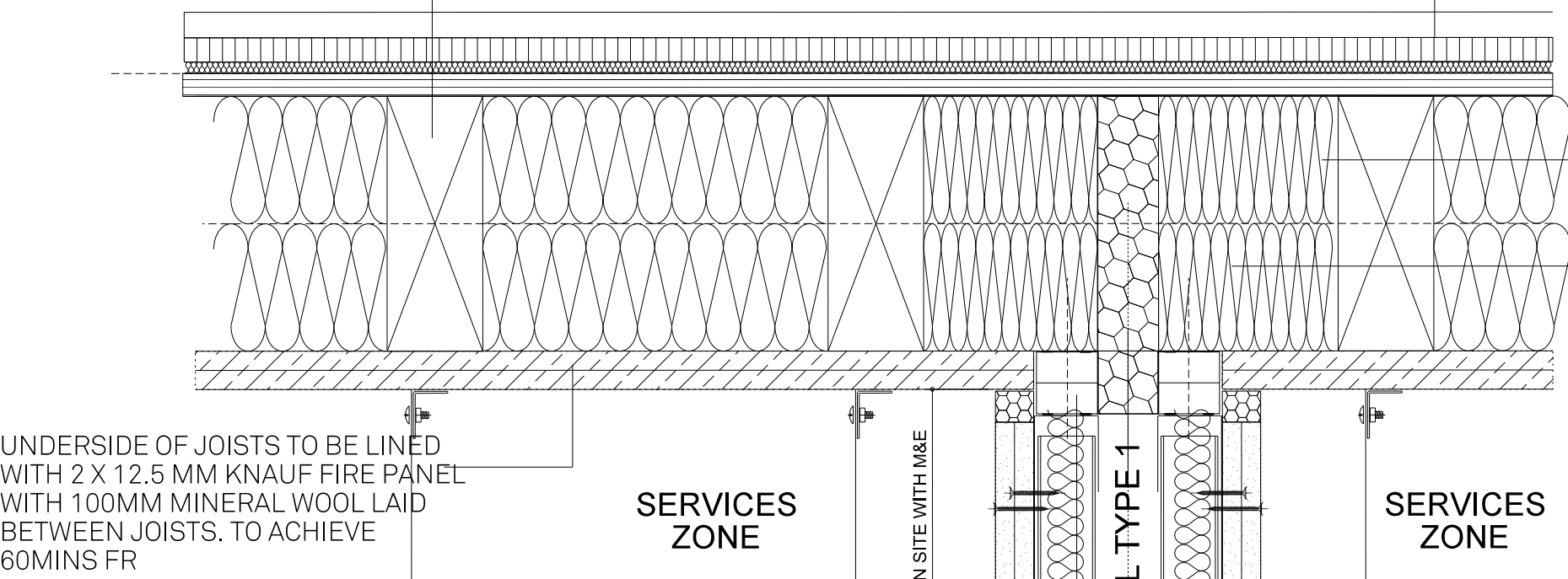


NEW AND EXISTING RAFTERS TO ENGINEERS DRAWINGS ABOVE CEILING LINE. CONDITION, DIRECTION OF SPAN AND CENTRES OF EXISTING JOISTS TBC

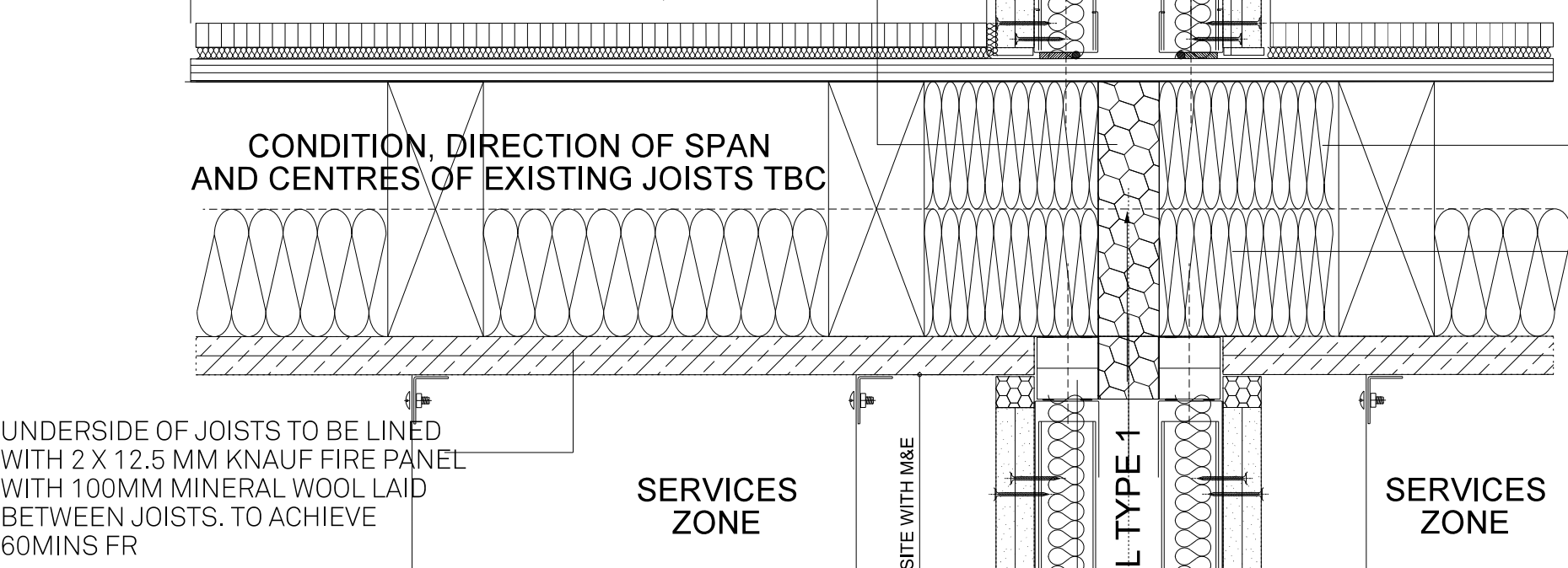


UNDERSIDE OF JOISTS TO BE LINED WITH 2 X 12.5 MM KNAUF FIRE PANEL WITH 100MM MINERAL WOOL LAID BETWEEN JOISTS. TO ACHIEVE 60MINS FR

TYPICAL EXISTING FLOOR DETAILS - WALL TYPE 1 TYPICAL HEAD

NOTE: WHEN FORMING BATHROOMS AND EN-SUITES MOISTURE RESISTANT BOARDS ARE TO BE USED, TAPE AND SEALL ALL JOINTS

EXISTING FLOOR DECK WITH NEW LININGS TO ENSURE ALL EXISTING FLOORS ARE LEVEL WITH 18MM OSB BOARD TO BE OVERLAID WITH EITHER: -  
1. REGIPOL ON NEW OSB BOARD  
OR  
2. 28MM THK KNAUF BRIO 18WF DRY SCREED RESILIENT FLOOR SURFACE WITH FINISHES AS SCHEDULE (C20MM). KNAUF BRIO 10MM FLANKING EDGE STRIP TO PERIMETER WITH 5MM FLOOR FOAM BENEATH SKIRTING BOARD. CONFIRMATION OF SPECIFICATION TBC BY ACCOUSTIC REPORT



SECONDARY CEILING OF ACOUSTIC HANGERS FIXED TO ANGLE AT 90 DEGREES TO U/S OF BOARDS TO JOISTS WITH FIXINGS INTO JOISTS. FILL AND SCRIM JOINTS READY FOR 3MM SKIM AND PAINT FINISH. CENTRES & CONSTRUCTION ALL IN STRICT ACCORDANCE WITH MANUFACTURERS DETAILS AND RECOMMENDATIONS

TYPICAL EXISTING FLOOR DETAILS - WALL TYPE 1 TYPICAL HEAD AND BASE

NEW NOGGING FUL DEPTH OF TIMBER FLOOR JOIST FOR BOTH HEAD AND BASE OF PARTY WALLS

FULL ACCOUSTIC INSULATION TO FULL FLOOR ZONE BELOW ALL PARTY WALLS

2 X 15MM KNAUF FIRE PANEL HEAD TRACK EACH SIDE WITH 20MM DEFLECTION (SUBJECT TO ENGINEERS CONFIRMATION)

WALL TYPE 1 REFER TO NBS. 2 X 15MM KNAUF SOUNDSHIELD PLUS TO EACH SIDE AND 2 X 25MM KNAUF INSULATION ACOUSTIC PARTITION ROLL WITH ECOSE TECHNOLOGY

WALL TYPE 1 REFER TO NBS. 2 X 15MM KNAUF SOUNDSHIELD PLUS TO EACH SIDEAND 2 X 25MM KNAUF INSULATION ACOUSTIC PARTITION ROLL WITH ECOSE TECHNOLOGY

CONTINUOUS BEAD OF KNAUF SEALANT FOR OPTIMUM SOUND INSULATION

KNJAF JOINTING MATERIAL (BULK FILL) FOR OPTIMISING PERFORMANCE

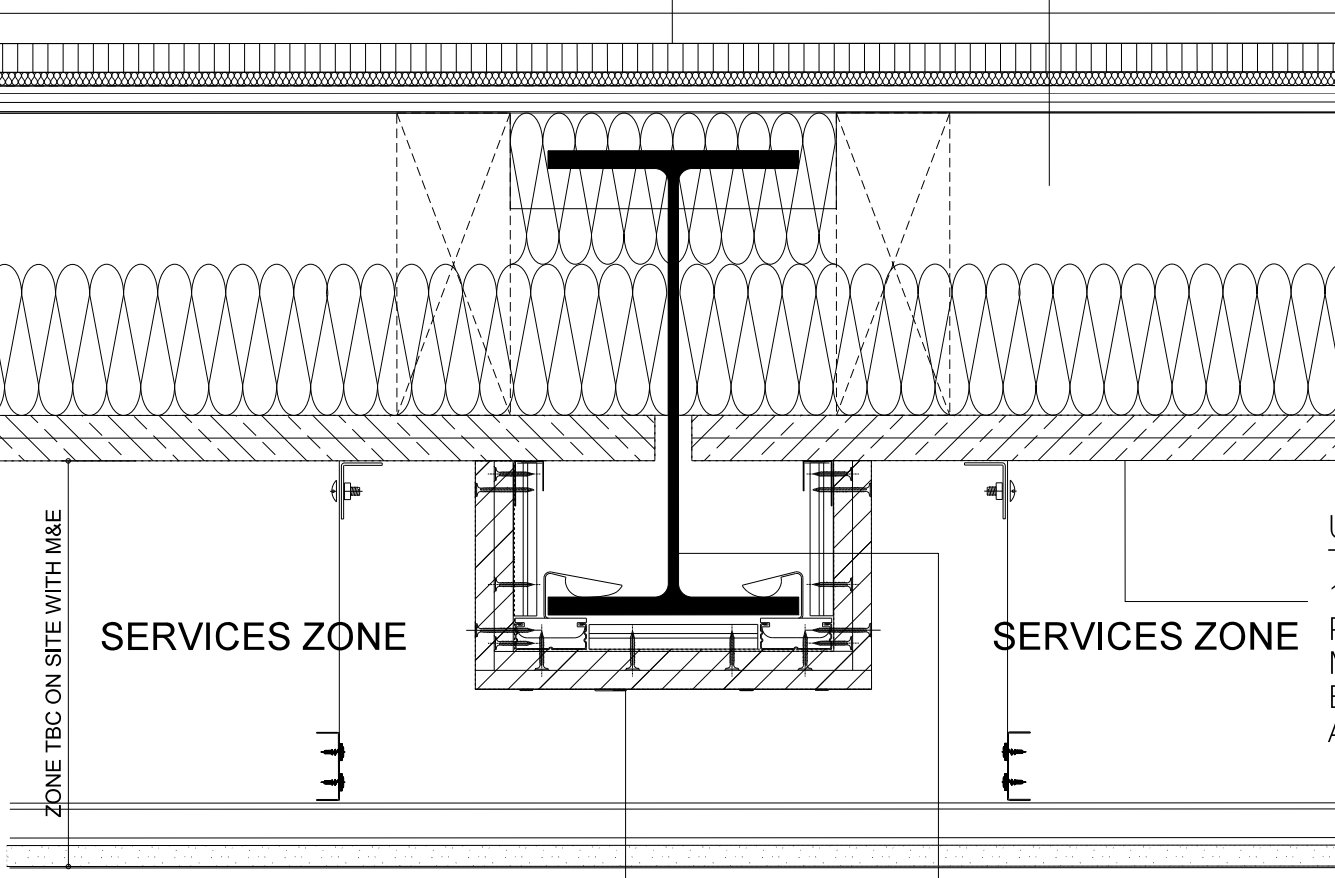
NEW NOGGING FUL DEPTH OF TIMBER FLOOR JOIST FOR BOTH HEAD AND BASE OF PARTY WALLS

FULL ACCOUSTIC INSULATION TO FULL FLOOR ZONE BELOW ALL PARTY WALLS

2 X 15MM KNAUF FIRE PANEL HEAD TRACK EACH SIDE WITH 20MM DEFLECTION (SUBJECT TO ENGINEERS CONFIRMATION)

WALL TYPE 1 REFER TO NBS. 2 X 15MM KNAUF SOUNDSHIELD PLUS TO EACH SIDE AND 2 X 25MM KNAUF INSULATION ACOUSTIC PARTITION ROLL WITH ECOSE TECHNOLOGY

NEW FLOOR DECK WITH NEW LININGS TO ENSURE ALL EXISTING FLOORS ARE LEVEL WITH 18MM OSB BOARD TO BE OVERLAID WITH EITHER: -  
1. REGIPOL ON NEW OSB BOARD  
OR  
2. 28MM THK KNAUF BRIO 18WF DRY SCREED RESILIENT FLOOR SURFACE WITH FINISHES AS SCHEDULE (C20MM). KNAUF BRIO 10MM FLANKING EDGE STRIP TO PERIMETER WITH 5MM FLOOR FOAM BENEATH SKIRTING BOARD. CONFIRMATION OF SPECIFICATION TBC BY ACCOUSTIC REPORT



ALL BEAMS TO BE LINED WITH 2 X 12.5 MM KNAUF FIRE PANEL WITH 100MM MINERAL WOOL LAID BETWEEN JOISTS. TO ACHIEVE 60MINS FIRE RATING. NOTE THE CONTUAL BOARD IS REQUIRED FOR ACCOUSTICS

NOTE: WHEN FORMING BATHROOMS AND EN- SUITES MOISTURE RESISTANT BOARDS ARE TO BE USED, TAPE AND SEALL ALL JOINTS

APARTMENT 18 bedroom 3

NEW AND EXISTING RAFTERS TO ENGINEERS DRAWINGS ABOVE CEILING LINE. CONDITION, DIRECTION OF SPAN AND CENTRES OF EXISTING JOISTS TBC

APARTMENT 2

TYPICAL STEEL BEAM DETAIL

FOR CONSTRUCTION

FALCONER  
CHESTER  
HALL

FCH

No 12 Temple Street, Liverpool, L2 5RH Telephone +44(0)151 243 5800  
5th Floor, 22 Soho Square, London, W1D 4NS Telephone +44(0) 203 137 7393

Project Title  
Chancery House, Liverpool

Drawing Title  
Apartment 2 - Show Apartment

Client  
Chancery House (Liverpool) LLP

Drawn By  
SLF

Date  
25.01.2016

Scale  
1:100 @ A1

Project No.  
P13-063

Drawing No.  
04-70-008

www.fcharchitects.com  
© F.C.H.