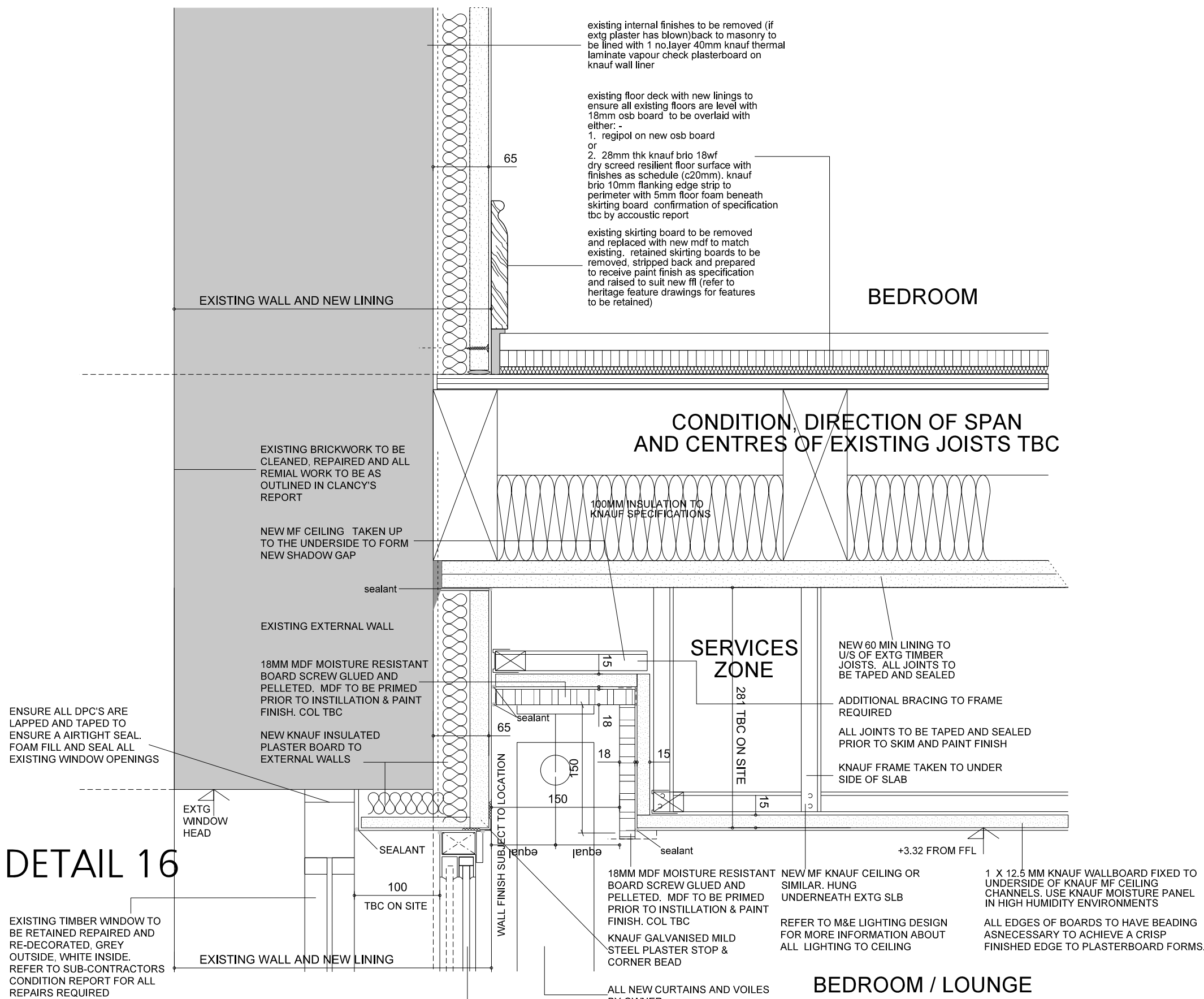
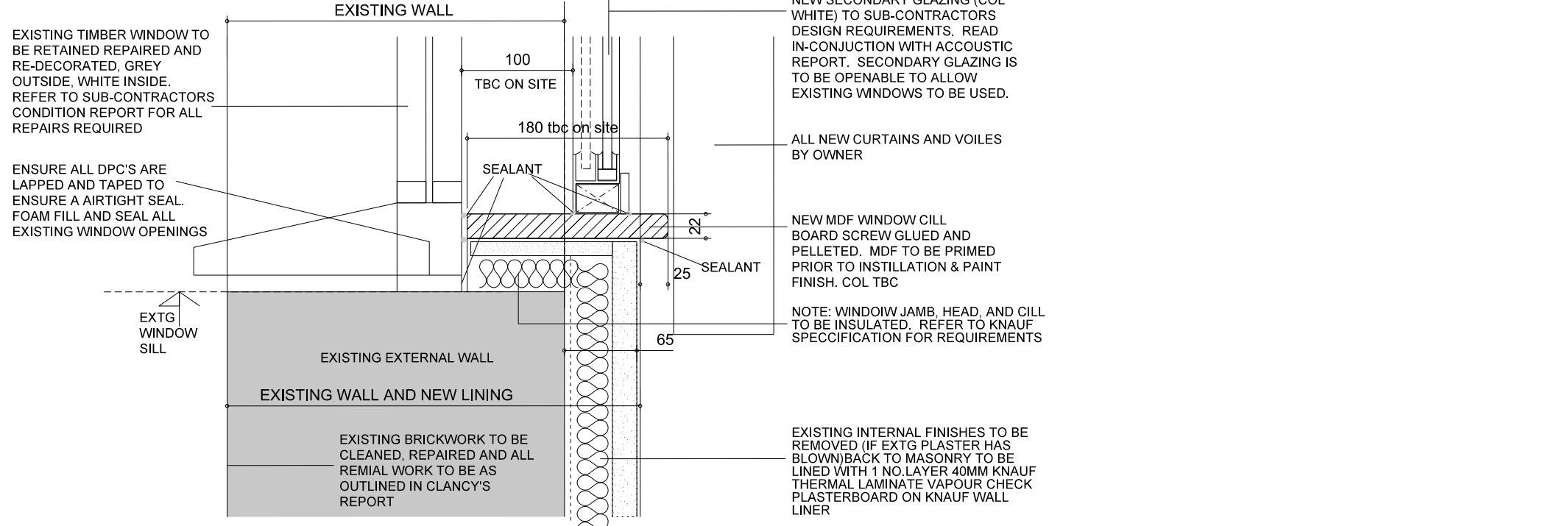


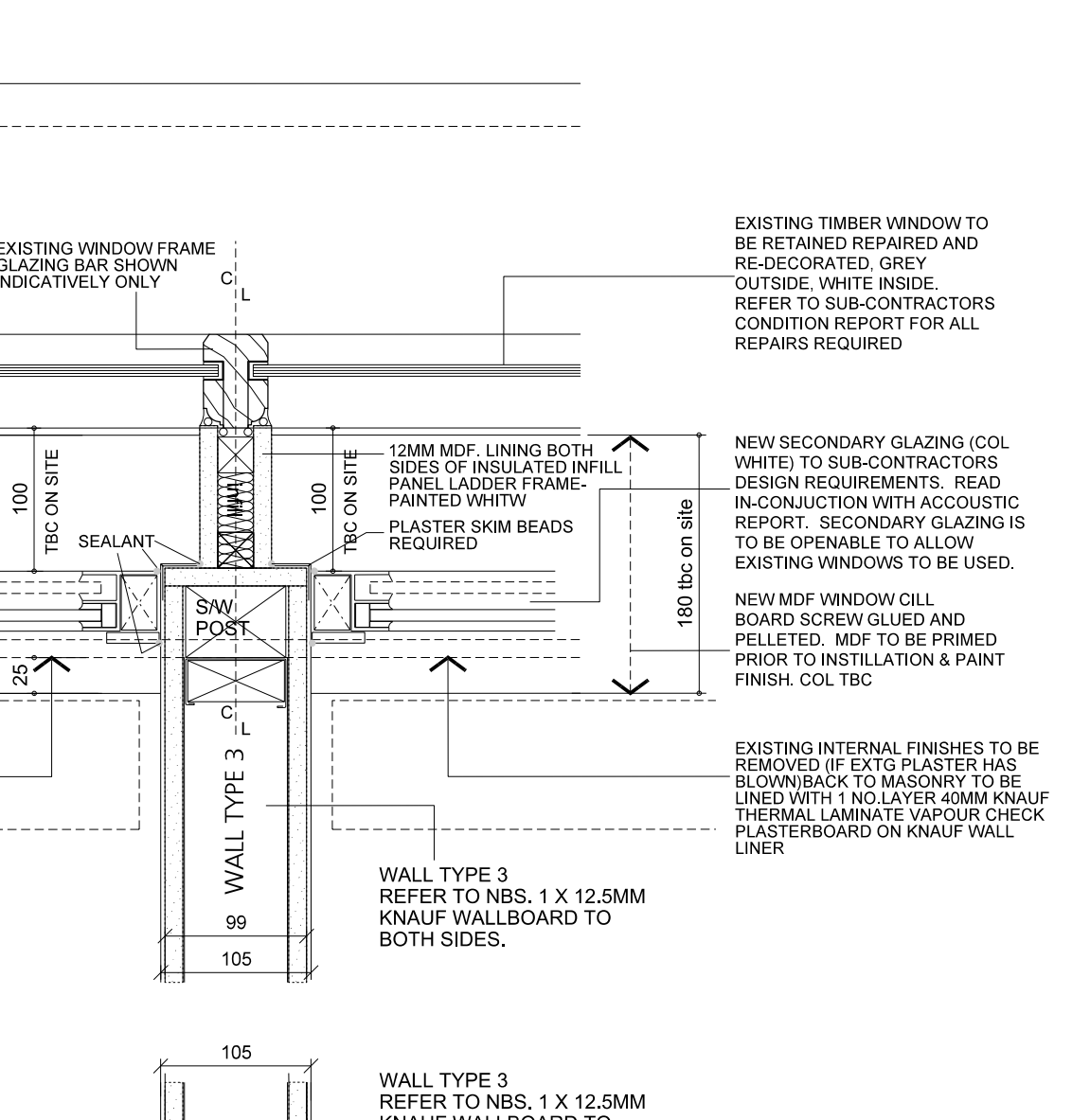
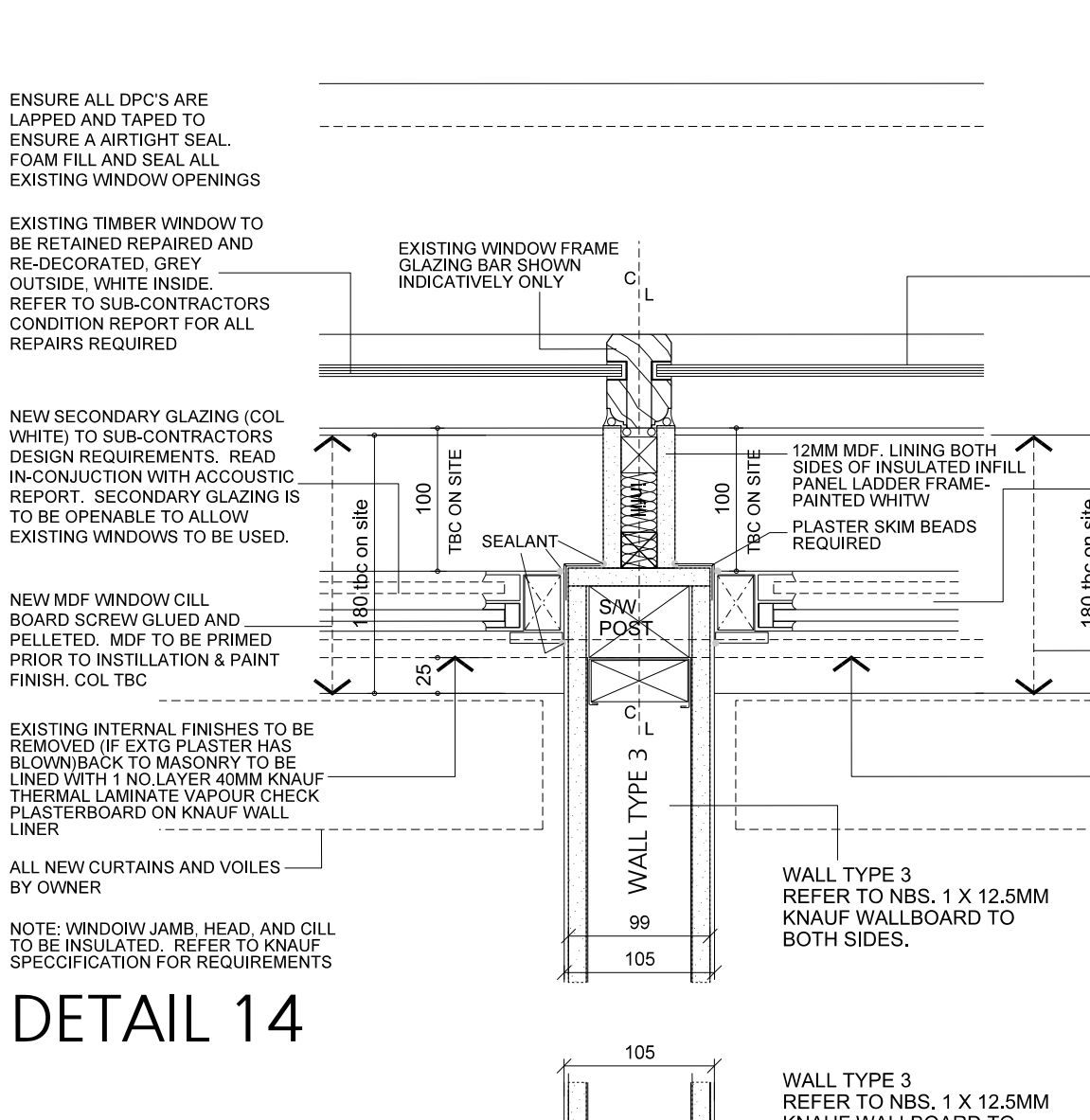
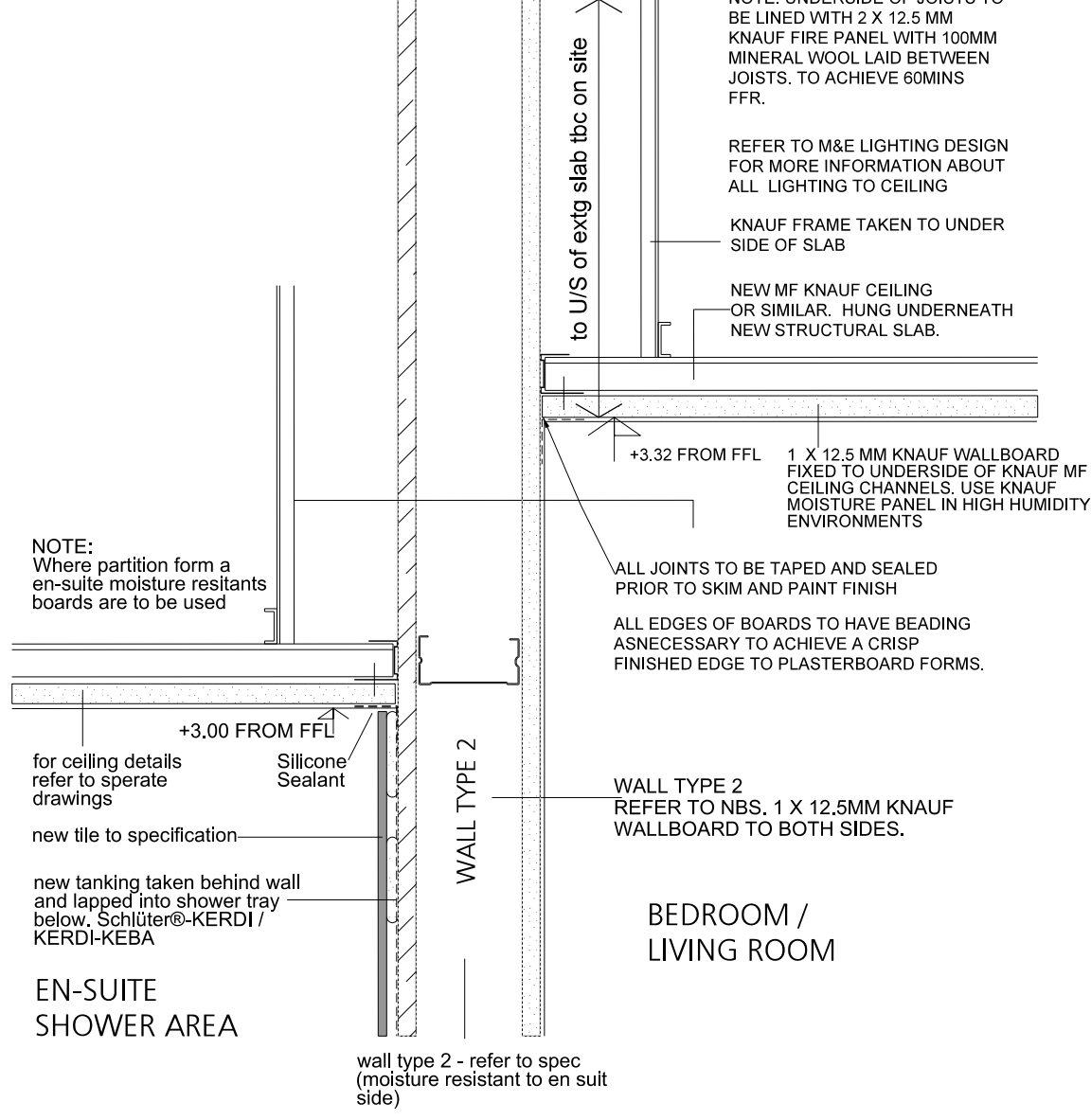
DETAIL 17



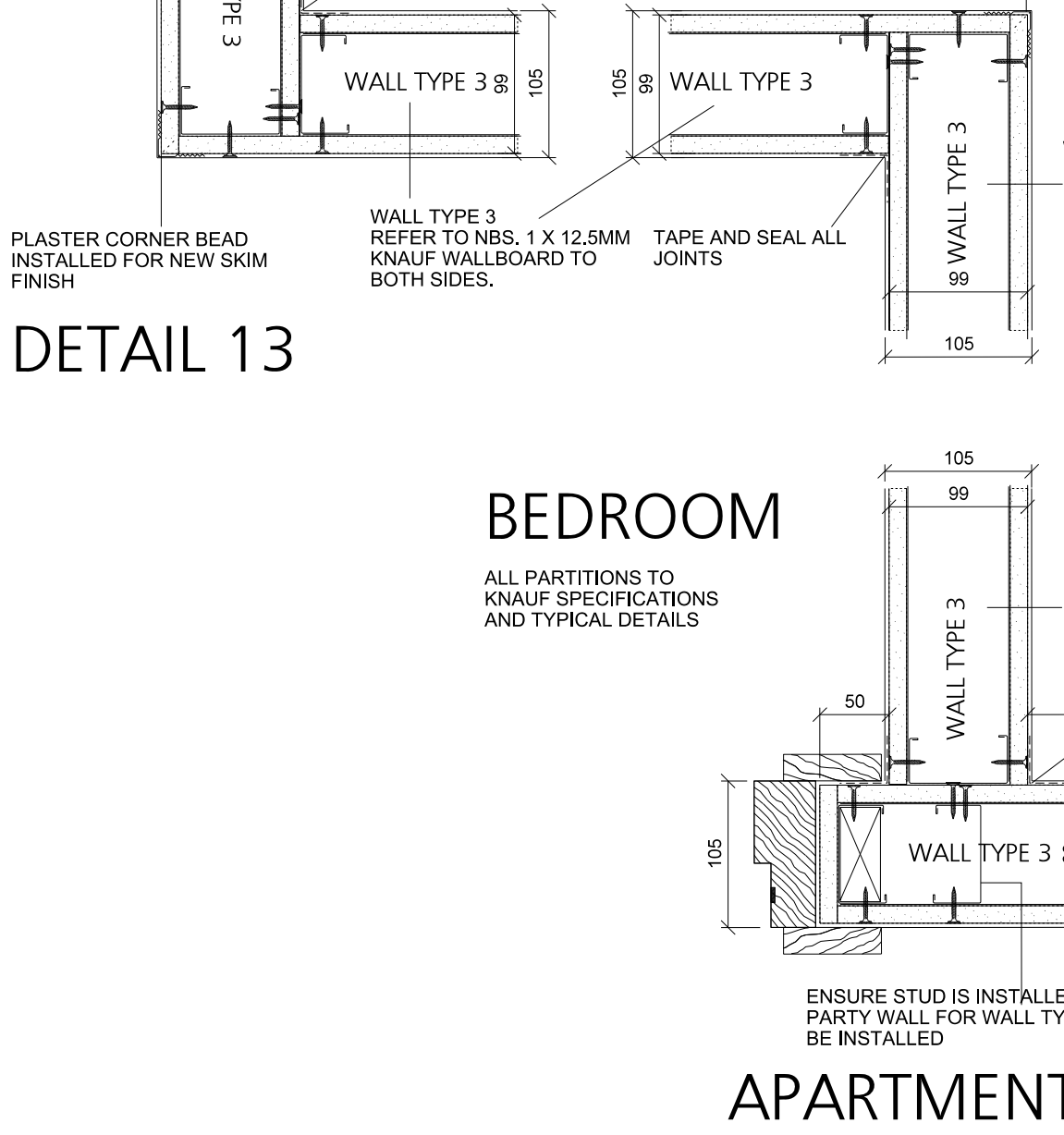
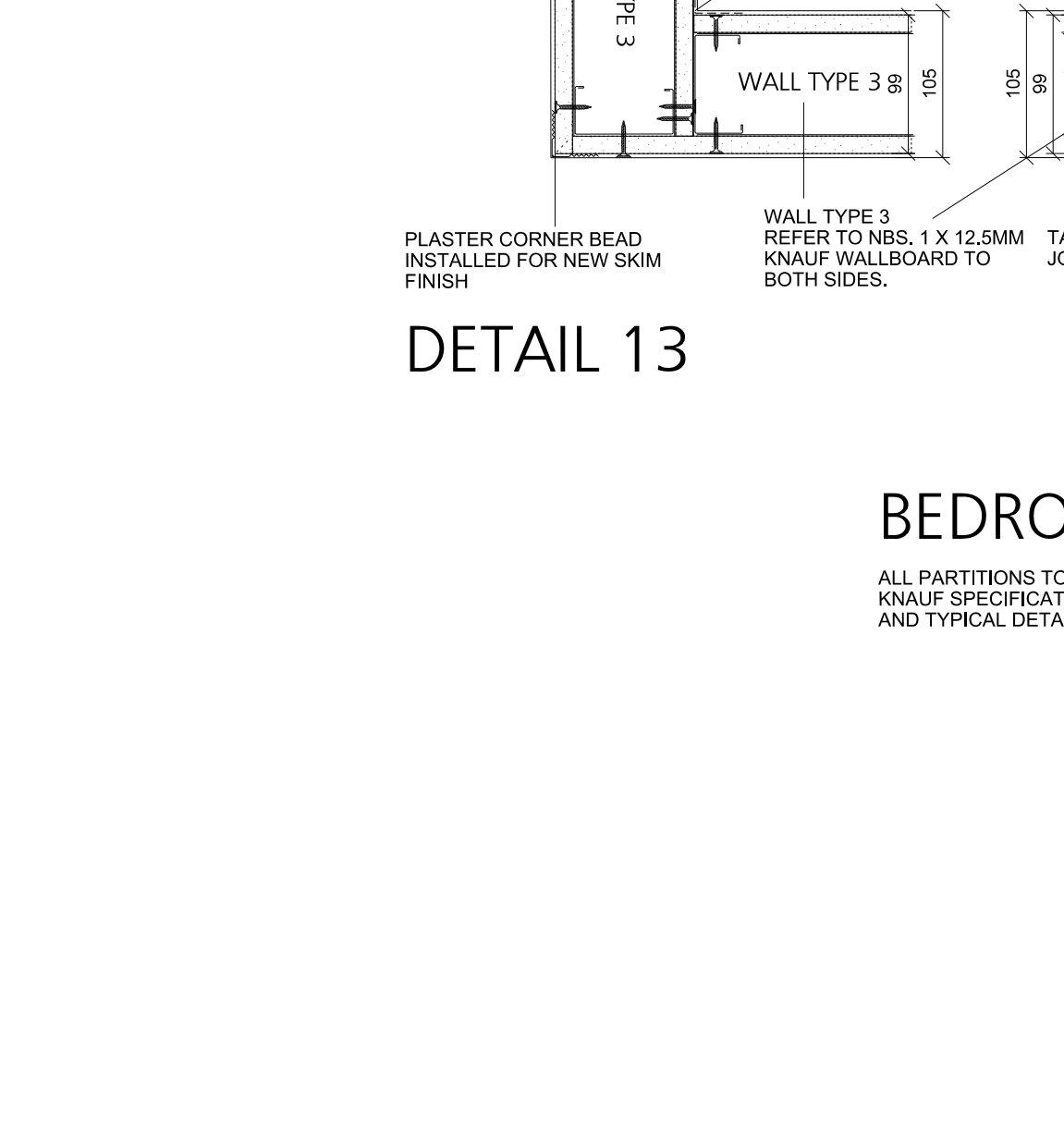
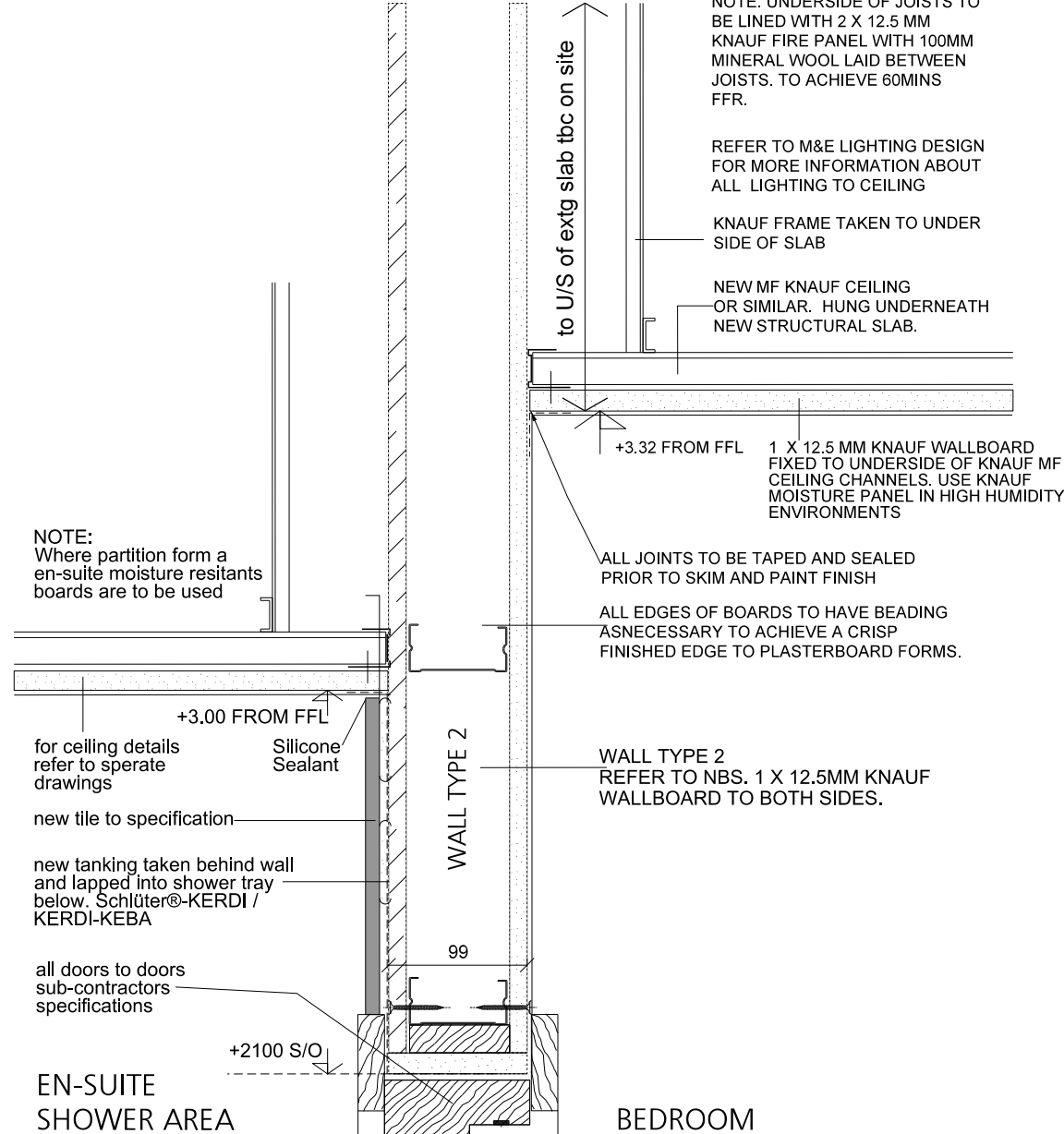
DETAIL 16



DETAIL 15



DETAIL 12



DETAIL 9



DETAIL 6



DETAIL 3

NOTES:

THIS DRAWING IS TO BE READ IN CONJUNCTION WITH ALL RELEVANT ARCHITECTS, ENGINEERS' AND SUBCONTRACTOR'S DRAWINGS AND SPECIFICATIONS.

DO NOT SCALE OF THIS DRAWING. ALL DETAILS AND DIMENSIONS ARE TO BE CHECKED BY THE CONTRACTOR / FABRICATOR PRIOR TO COMMENCEMENT OF CONSTRUCTION / FABRICATION. ANY DISCREPANCIES ARE TO BE REPORTED TO THE CONTRACTOR.

ALL DIMENSIONS TO BE CHECKED ON SITE PRIOR TO MANUFACTURE. ANY DISCREPANCIES NOTICED BETWEEN SCHEDULE AND DETAILS TO BE REPORTED TO THE ARCHITECT IMMEDIATELY. ALL DIMENSIONS ARE IN MILLIMETERS UNLESS NOTED OTHERWISE.

ANY EXISTING DIMENSIONS NOTED ON THIS DRAWING ARE TO BE CHECKED BY THE CONTRACTOR PRIOR TO THE COMMENCEMENT OF THE WORKS.

ALL MATERIALS AND COMPONENTS TO COMPLY WITH THE CURRENT BRITISH STANDARDS AND ALL WORK IN ACCORDANCE WITH CODES OF PRACTICE AND CURRENT BUILDING REGULATIONS.

READ IN CONJUNCTION WITH PARTITION TYPE DRAWING PLANS AND ALL KNAUF SPECIFICATIONS RECOMMENDATIONS AND DETAILS.

CONTRACTOR TO ALLOW FOR ALL EDGE BEADS, CORNER BEADS AND TILING SQUARE BRUSHED STAINLESS STEEL BEADS. ALL EDGES OF BOARDS TO HAVE BEADING AS NECESSARY TO ACHIEVE A CRISP FINISHED EDGE TO PLASTERBOARD FORMS.

FOR ALL PATTERESSING REFER TO FF&E ELEVATIONAL DRAWINGS FOR REQUIREMENTS

ALL DEFLECTION HEADS TO BE 20MM. REFER TO KNAUF SPEC FOR DEFLECTION HEAD REQUIREMENTS

ALL STEELWORK TO BE 60MINS FIRE RATED