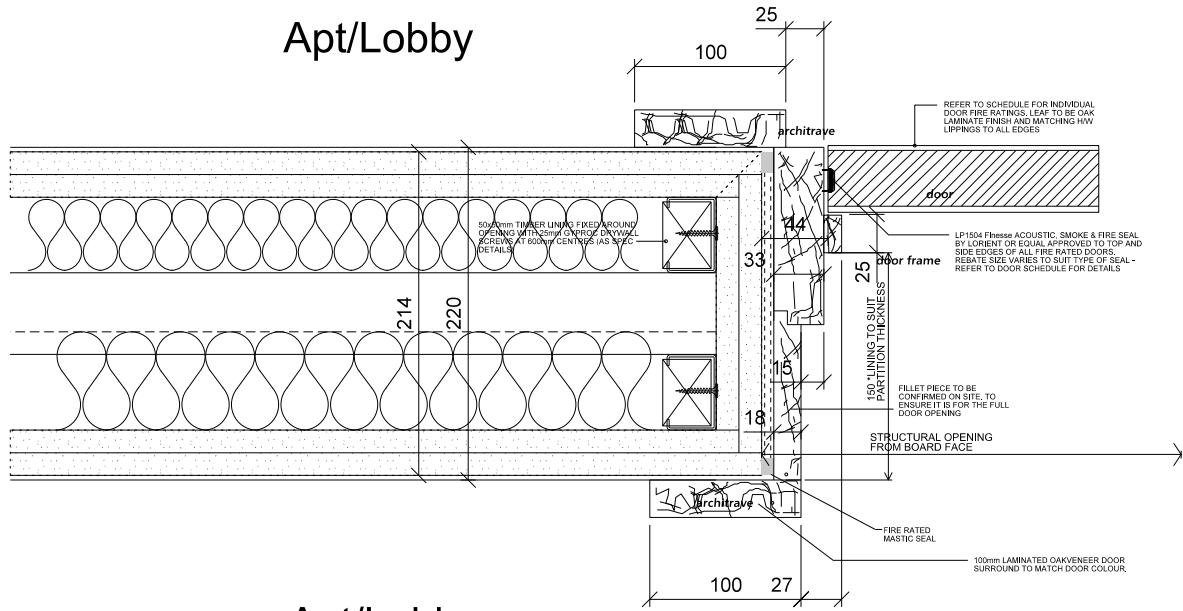
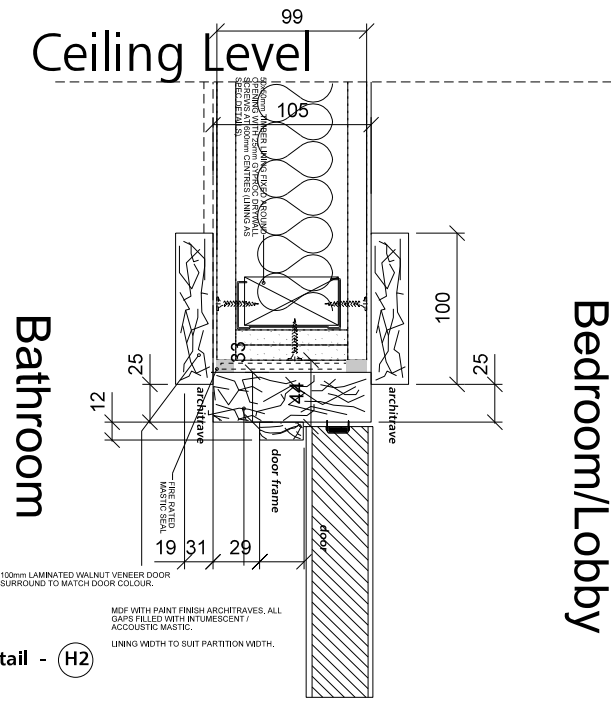


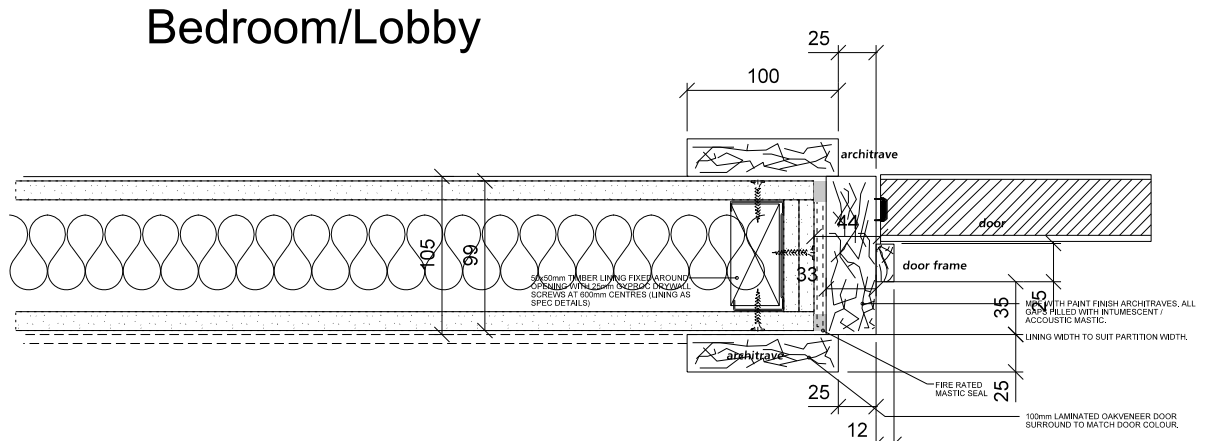
Door head Detail - (H1)



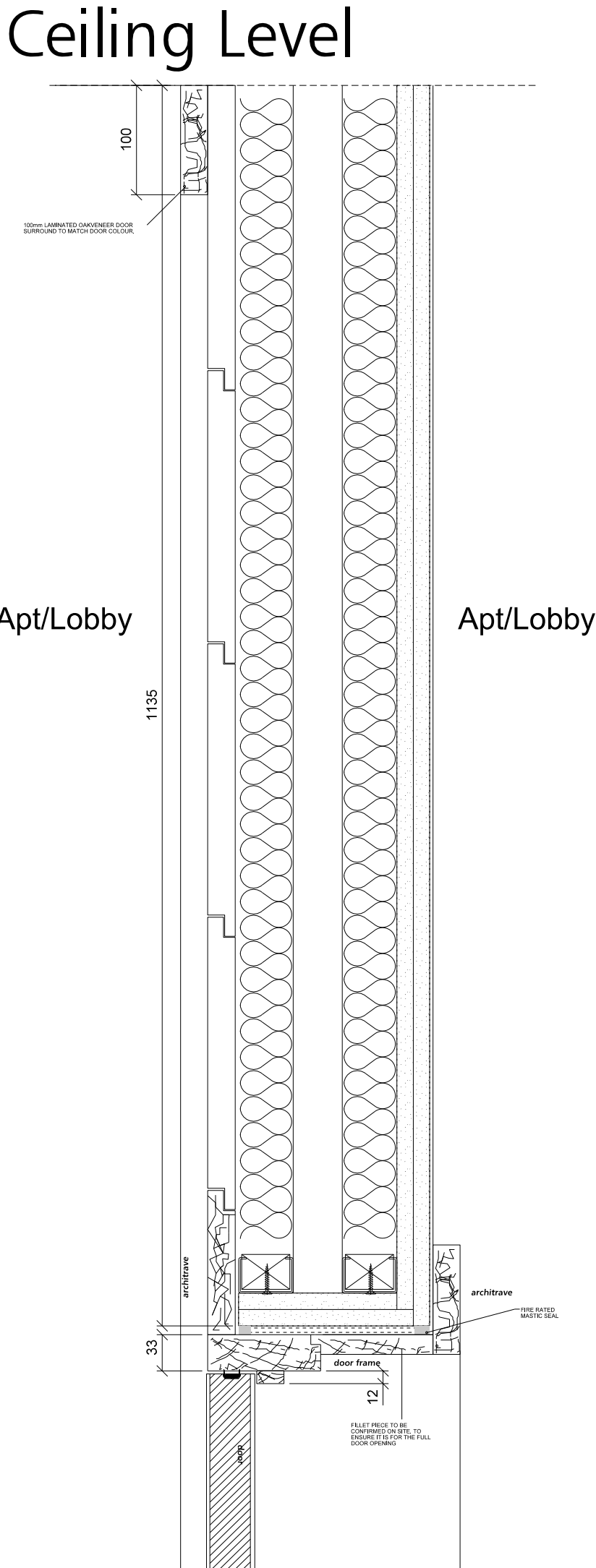
Door Jamb Detail - (J1) Door head Detail - (H1)



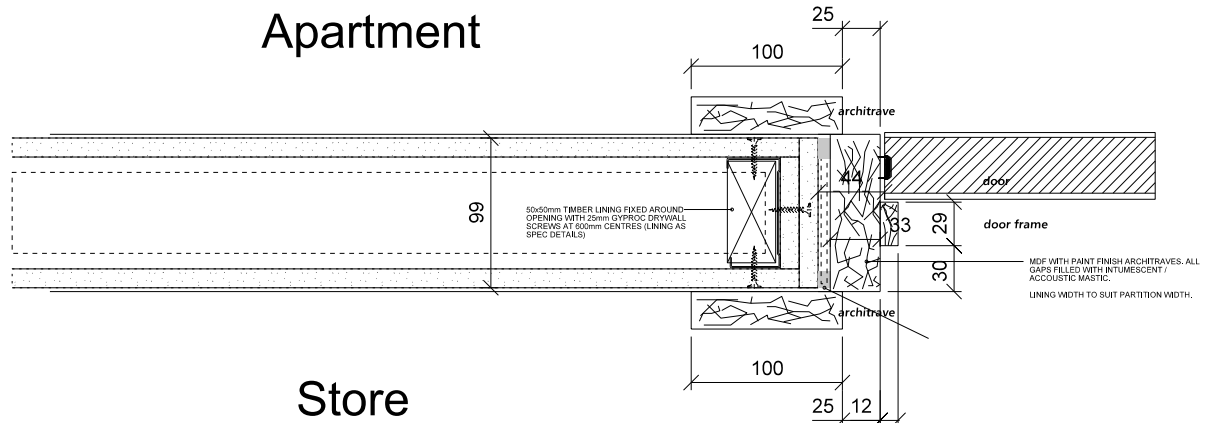
Door head Detail - (H2)



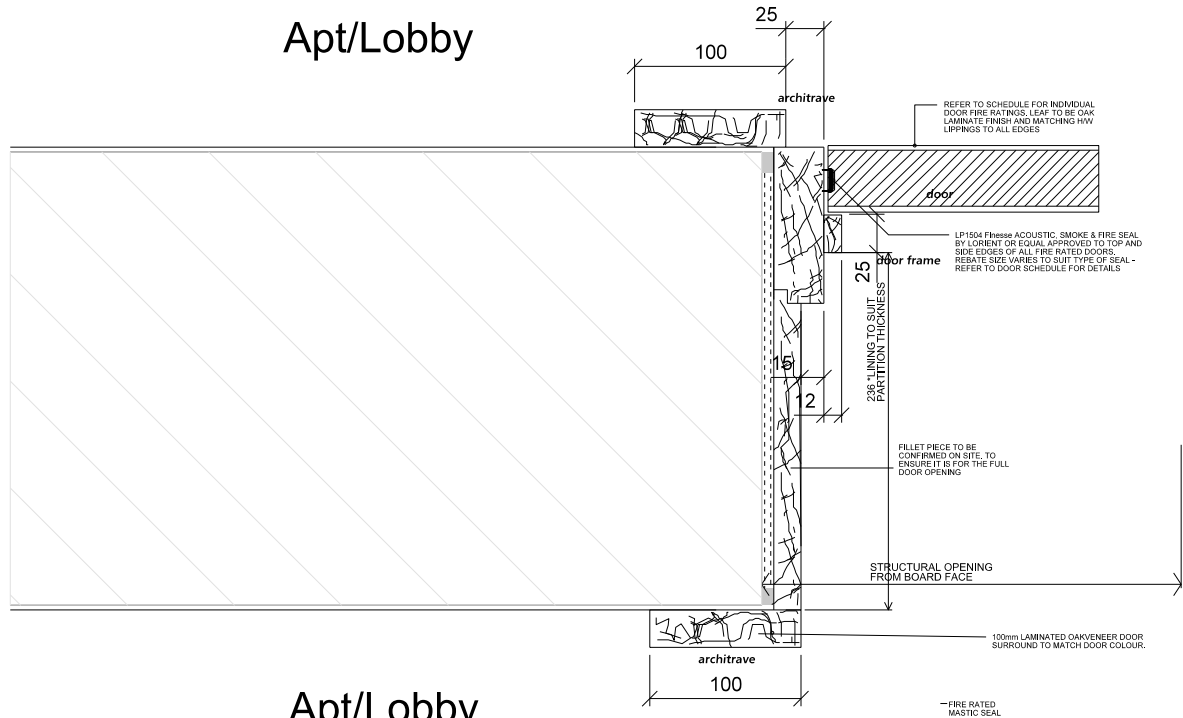
Door Jamb Detail - (J2) Door head Detail - (H2)



Door head Detail - (H5)



Door Jamb Detail - (J3) Door head Detail - (H3)



Door Jamb Detail - (J4) Door head Detail - (H4)

DOOR SCHEDULE: IMPORTANT NOTES

This Drawing is to be read in conjunction with door & finishes schedule and door details and specialist ironmongery schedule

Fire Doors to be fitted with sealmaster or similar intumescent strips and smoke seals, these are to be rebated within frames and meeting stiles (radius leading edge of stiles)

Doorsets to have current fire certificate and be installed in accordance with BS:8214. External door frames to be H/W treated for paint finish.

All extg openings to be measured on site prior to manufacture

FALCONER CHESTER HALL



Telephone +44(0)151 243 5800
London | Liverpool | Kuala Lumpur

Project Title
Chancery House, Liverpool
Drawing Title
Head & Jamb Details
Client
Chancery House (Liverpool) LLP
Drawn By
MW
Date
24.11.2015
Scale
1:5@A2

Project No.
P13-063
Drawing No.
04-32-007

www.fcharchitects.com
© F.C.H.