

ELEVATION 05



EXISTING WINDOW WIE.26
(TYPE 22)
42 pane single glazed window with timber frame and bulkhead internally.
Two, bottom opening light (side hung) with cockspur handle and window stay.
Cord operated blinds.
Frame generally OK.



EXISTING WINDOW WIE.27
(TYPE 20)
56 pane single glazed window with timber frame and bulkhead internally.
Two, bottom opening light (side hung) with cockspur handle and window stay.
Cord operated blinds.
Some sash not to frame.



EXISTING WINDOW WIE.28
(TYPE 20)
56 pane single glazed window with timber frame and bulkhead internally.
Two, top opening light (top hung) with sashcode eyepiece and restriction.
Two, bottom opening light (side hung) with cockspur handle and window stay.
Cord operated blinds.
Visible not to frame.



EXISTING WINDOW WIE.29
(TYPE 31)
Single glazed timber framed window with obscured glass.
Frame generally OK.



EXISTING WINDOW WIE.30
(TYPE 32)
Single glazed timber framed window with obscured glass, cockspur handle and window stay.
Frame generally OK.



EXISTING WINDOW WIE.31
(TYPE 23)
Single glazed timber framed window with obscured glass, cockspur handle and window stay.
Frame generally OK.



EXISTING WINDOW WIE.32
(TYPE 25)
12 pane single glazed window with timber frame.
Two, opening light (side hung) with cockspur handle and window stay.
Cord operated blinds.
Frame generally OK.



EXISTING WINDOW WIE.33
(TYPE 36)
4 pane single glazed opening window with timber frame, cockspur handle and window stay.
Cord operated blinds.
Frame generally OK.



EXISTING WINDOW WIE.34
(TYPE 21)
30 pane single glazed window with timber frame & bulkhead internally.
Two, bottom opening light (side hung) with cockspur handle and window stay.
Cord operated blinds.
Visible not to frame.

ELEVATION 06



EXISTING WINDOW WIE.35 & WIE.36
(TYPE 36)
4 pane single glazed window with timber frame.
Two, opening light (WIE.36) with cockspur handle, existing window stay detached.
Cord operated blinds.
Extensive not to frame.

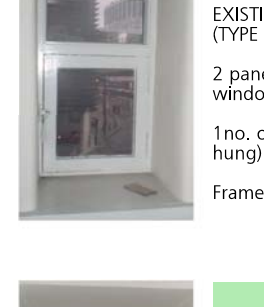


EXISTING WINDOW WIE.37
(TYPE 36)
4 pane single glazed window with timber frame.
Two, opening light (WIE.38) with cockspur handle & window stay.
Cord operated blinds.
Visible not to frame.

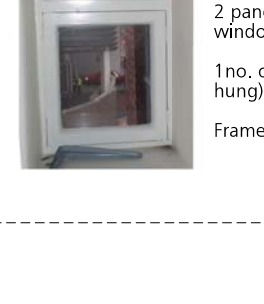
ELEVATION 07



EXISTING WINDOW WIE.39
(TYPE 34)
2 pane single glazed window with timber frame.
Two, opening light (side hung) with cockspur handle.
Frame generally OK.



EXISTING WINDOW WIE.40
(TYPE 34)
2 pane single glazed window with timber frame.
Two, opening light (side hung) with cockspur handle.
Frame generally OK.



EXISTING WINDOW WIE.41
(TYPE 34)
2 pane single glazed window with timber frame.
Two, opening light (side hung) with cockspur handle.
Frame generally OK.

ELEVATION 04



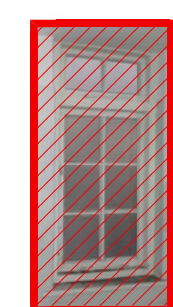
EXISTING WINDOW WIE.25
(TYPE 20)
56 pane single glazed window with timber frame and bulkhead internally.
Two, top opening light (top hung) with sashcode eyepiece and restriction.
Two, bottom opening light (side hung) with cockspur handle and window stay.
Cord operated blinds.
Frame generally OK.



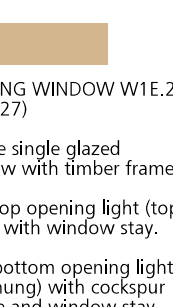
EXISTING WINDOW WIE.24
(TYPE 29)
Single glazed timber framed window with obscured glass.
Two, top opening light (top hung) with window stay.
Some sash not to frame.



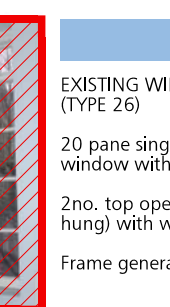
EXISTING WINDOW WIE.23
(TYPE 23)
8 pane single glazed window with timber frame.
Two, top opening light (top hung) with window stay.
Frame generally OK.



EXISTING WINDOW WIE.22
(TYPE 23)
8 pane single glazed window with timber frame.
Two, top opening light (top hung) with window stay.
Two, bottom opening light (side hung) with cockspur handle and window stay.
Some sash not to frame.



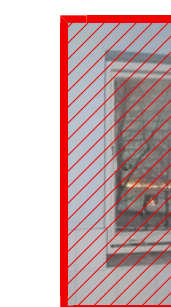
EXISTING WINDOW WIE.21
(TYPE 20)
20 pane single glazed window with timber frame.
Two, top opening light (top hung) with window stay.
Frame generally OK.



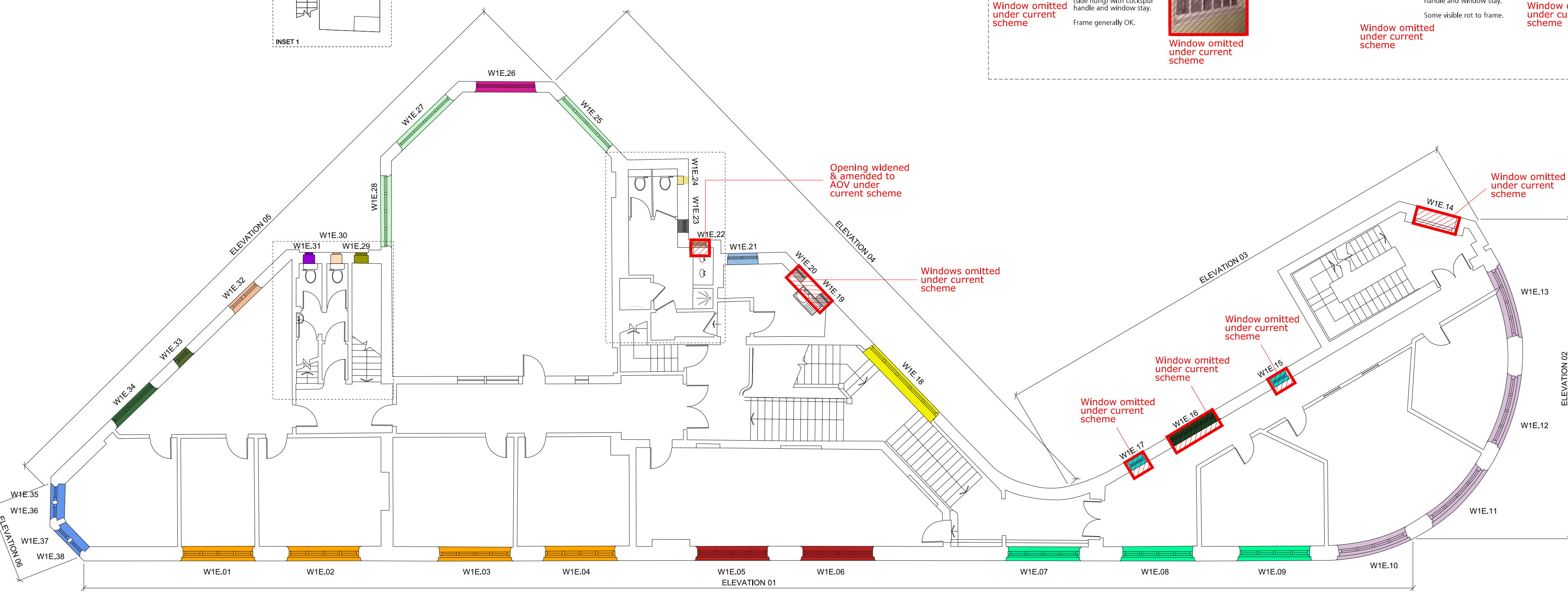
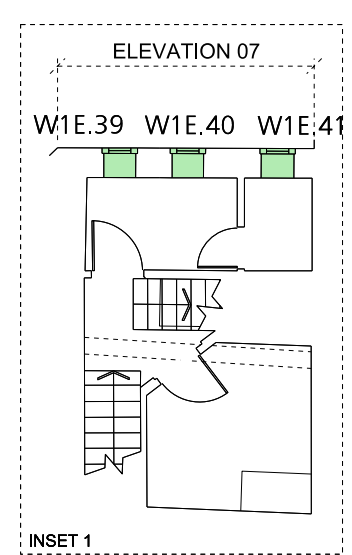
EXISTING WINDOW WIE.20
(TYPE 20)
Single glazed timber framed opening window with cockspur handle and window stay.
Frame generally OK.



EXISTING WINDOW WIE.19
(TYPE 20)
Single glazed timber framed opening window with cockspur handle and window stay.
Frame generally OK.



EXISTING WINDOW WIE.18
(TYPE 20)
80 pane single glazed window with timber frame.
Two, top opening light (top hung) with window stay.
Frame generally OK.



ELEVATION 01



EXISTING WINDOW WIE.01
(TYPE 18)
56 pane single glazed window with timber frame & bulkhead internally.
Two, bottom opening light (side hung) with cockspur handle and window stay.
Cord operated blinds.
Visible not to frame.



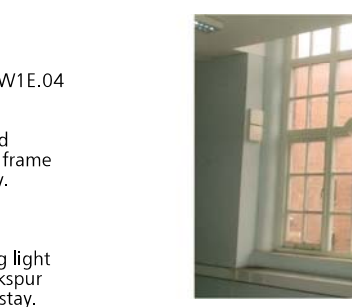
EXISTING WINDOW WIE.02
(TYPE 18)
56 pane single glazed window with timber frame & bulkhead internally.
Two, bottom opening light (side hung) with cockspur handle and window stay.
Cord operated blinds.
Visible not to frame.



EXISTING WINDOW WIE.03
(TYPE 18)
56 pane single glazed window with timber frame & bulkhead internally.
Two, bottom opening light (side hung) with cockspur handle and window stay.
Cord operated blinds.
Visible not to frame.



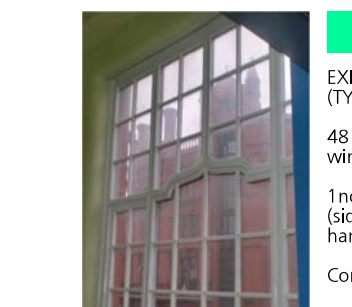
EXISTING WINDOW WIE.04
(TYPE 18)
56 pane single glazed window with timber frame & bulkhead internally.
Two, bottom opening light (side hung) with cockspur handle and window stay.
Cord operated blinds.
Visible not to frame.



EXISTING WINDOW WIE.05
(TYPE 18)
56 pane single glazed window with timber frame & bulkhead internally.
Two, bottom opening light (side hung) with cockspur handle and window stay.
Cord operated blinds.
Visible not to frame.



EXISTING WINDOW WIE.06
(TYPE 18)
56 pane single glazed window with timber frame & bulkhead internally.
Two, top opening light (side hung) with cockspur handle and window stay.
Two, bottom opening light (side hung) with cockspur handle and window stay.
Cord operated blinds.
Visible not to frame.



EXISTING WINDOW WIE.07
(TYPE 20)
48 pane single glazed window with timber frame & bulkhead internally.
Two, top opening light (side hung) with cockspur handle and window stay.
Cord operated blinds.
Frame generally OK.



EXISTING WINDOW WIE.08
(TYPE 20)
48 pane single glazed window with timber frame & bulkhead internally.
Two, bottom opening light (side hung) with cockspur handle and window stay.
Cord operated blinds.
Some sash not to frame.

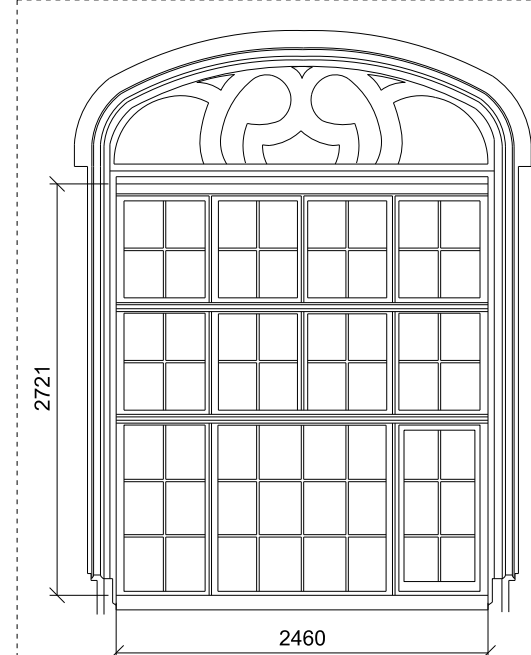


EXISTING WINDOW WIE.09
(TYPE 20)
48 pane single glazed window with timber frame & bulkhead internally.
Two, bottom opening light (side hung) with cockspur handle and window stay.
Cord operated blinds.
Some sash not to frame.

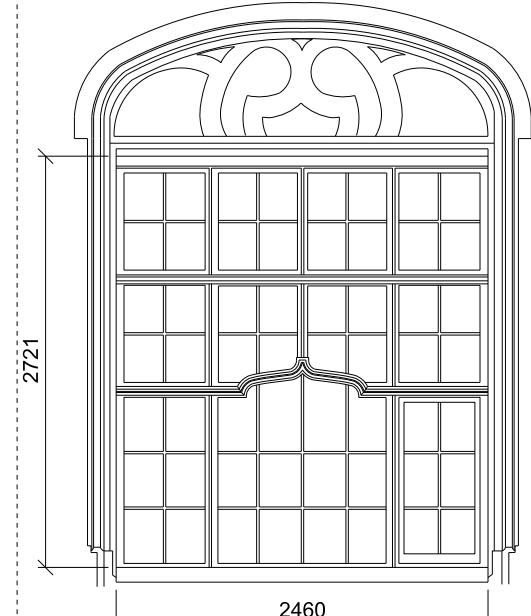


EXISTING WINDOW WIE.10
(TYPE 21)
48 pane single glazed window with timber frame & bulkhead internally.
Two, bottom opening light (side hung) with cockspur handle and window stay.
Cord operated blinds.
Some sash not to frame.

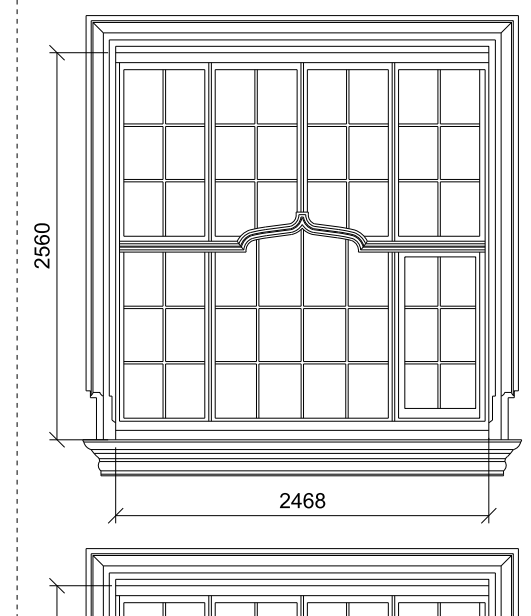
EXISTING WINDOW TYPES



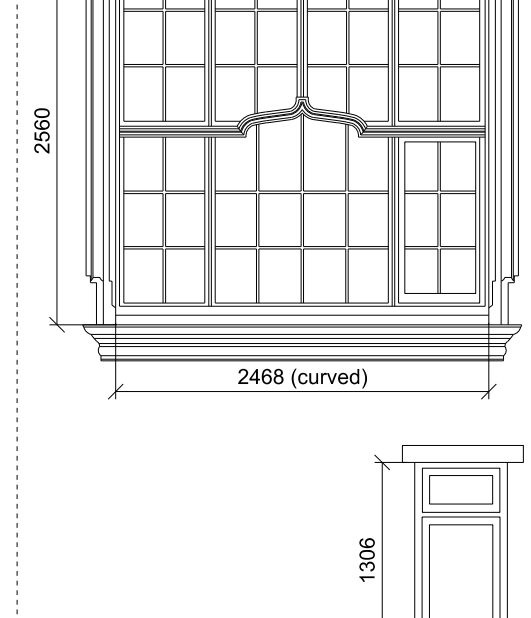
WINDOW TYPE 18
Large timber window
Window refs:
WIE.01-04



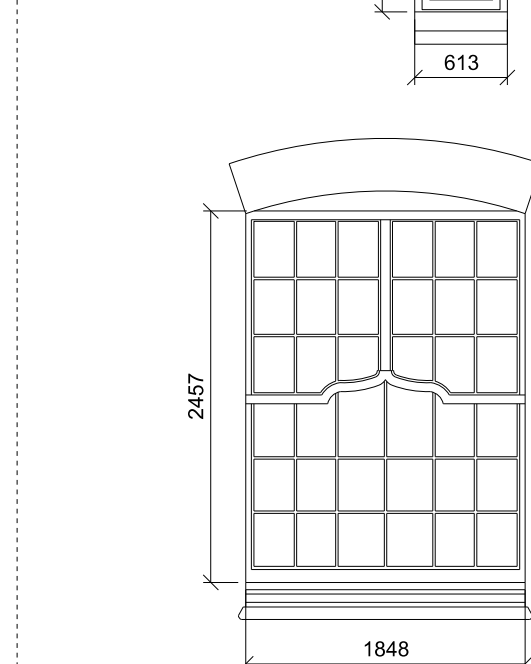
WINDOW TYPE 19
Large timber window
Window refs:
WIE.05-06



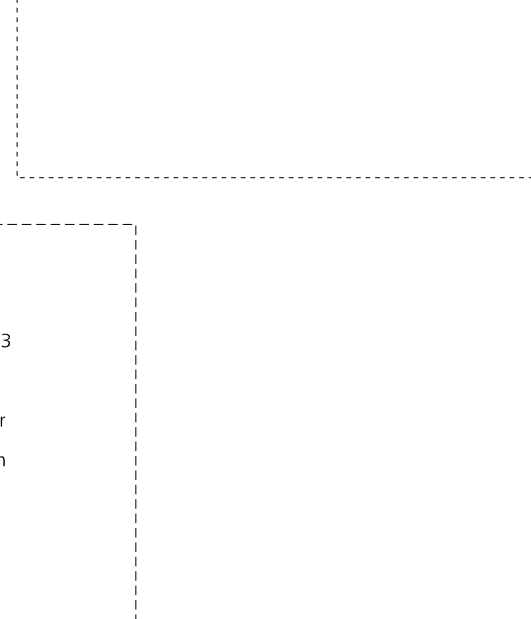
WINDOW TYPE 23
Large timber window
Window refs:
WIE.07 - 09



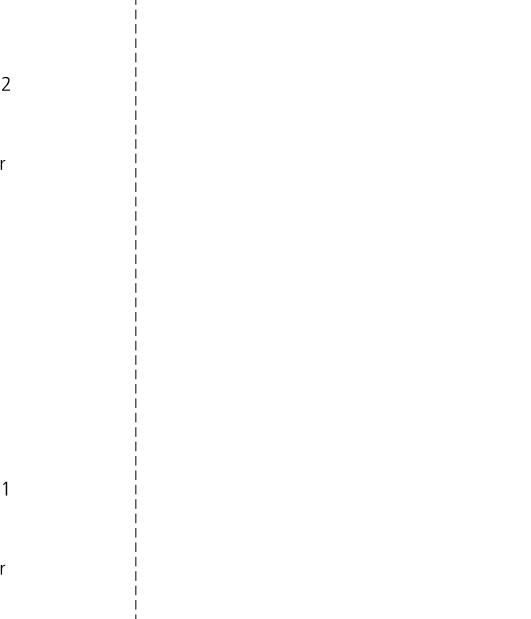
WINDOW TYPE 21
Large timber window
Curved.
Window refs:
WIE.10 - 13



WINDOW TYPE 22
Slot timber window
Window refs:
WIE.15 & WIE.17



WINDOW TYPE 23
Timber window
Window refs:
WIE.16



EXISTING WINDOW WIE.13
(TYPE 21)
48 pane single glazed window with curved timber frame and bulkhead internally.
Two, bottom opening light (side hung) with cockspur handle and window stay.
Cord operated blinds.
Some sash not to frame.



EXISTING WINDOW WIE.12
(TYPE 21)
48 pane single glazed window with curved timber frame and bulkhead internally.
Two, bottom opening light (side hung) with cockspur handle and window stay.
Cord operated blinds.
Some sash not to frame.



EXISTING WINDOW WIE.11
(TYPE 21)
48 pane single glazed window with curved timber frame and bulkhead internally.
Two, bottom opening light (side hung) with cockspur handle and window stay.
Cord operated blinds.
Some sash not to frame.

N.B. ALL WINDOW DIMENSIONS INDICATIVE, SUBJECT TO DETAILED SURVEY

NOTES

ALL WINDOW OPENINGS TO BE MEASURED BY APPOINTED WINDOW SUB-CONTRACTOR BEFORE FABRICATION.
ALTERATION WORKS OF ALL WINDOW OPENINGS TO BE CARRIED OUT IN STRICT ACCORDANCE WITH APPROVED METHOD STATEMENT.
ALL NEW WINDOWS TO BE INSTALLED IN STRICT ACCORDANCE WITH MANUFACTURERS PROPOSED DETAILS.
ALL EXISTING WINDOWS TO BE REPERFISHED IN STRICT ACCORDANCE WITH SPECIALIST RECOMMENDATIONS AND DETAILS.

FOR CONSTRUCTION

**FALCONER
CHESTER
HALL**



Project Title
Chancery House, Liverpool

Drawing Title
First Floor Plan - Existing Window Survey

Client
Chancery House (Liverpool) LLP

Drawn By
EO

Date
Nov 2015

Scale
1:100 / 1:50 @ A0

Project No.
P13-063

Drawing No.
04-31-003

No 12 Temple Street, Liverpool, L2 5RH Telephone +44(0)151 243 5800

5th Floor, 22 Soho Square, London, W1D 4NS Telephone +44(0)203 137 7393

www.falconerchestrer.com

© F.C.H.

Windows to be omitted