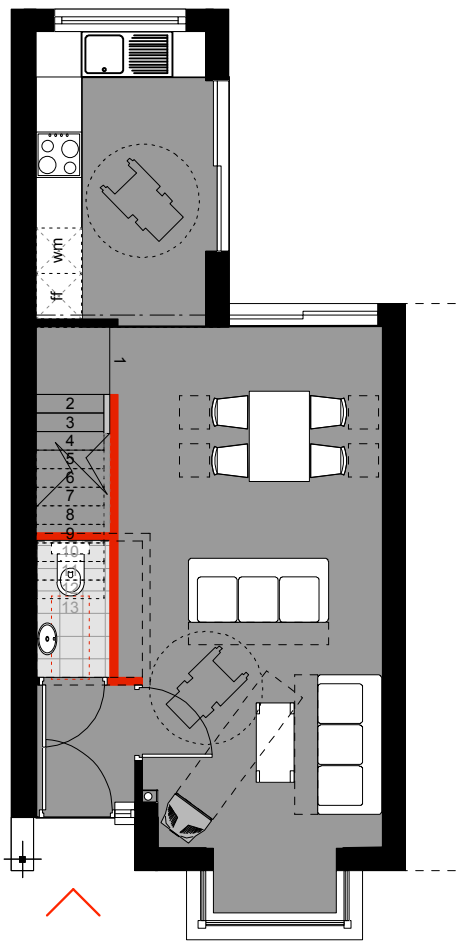


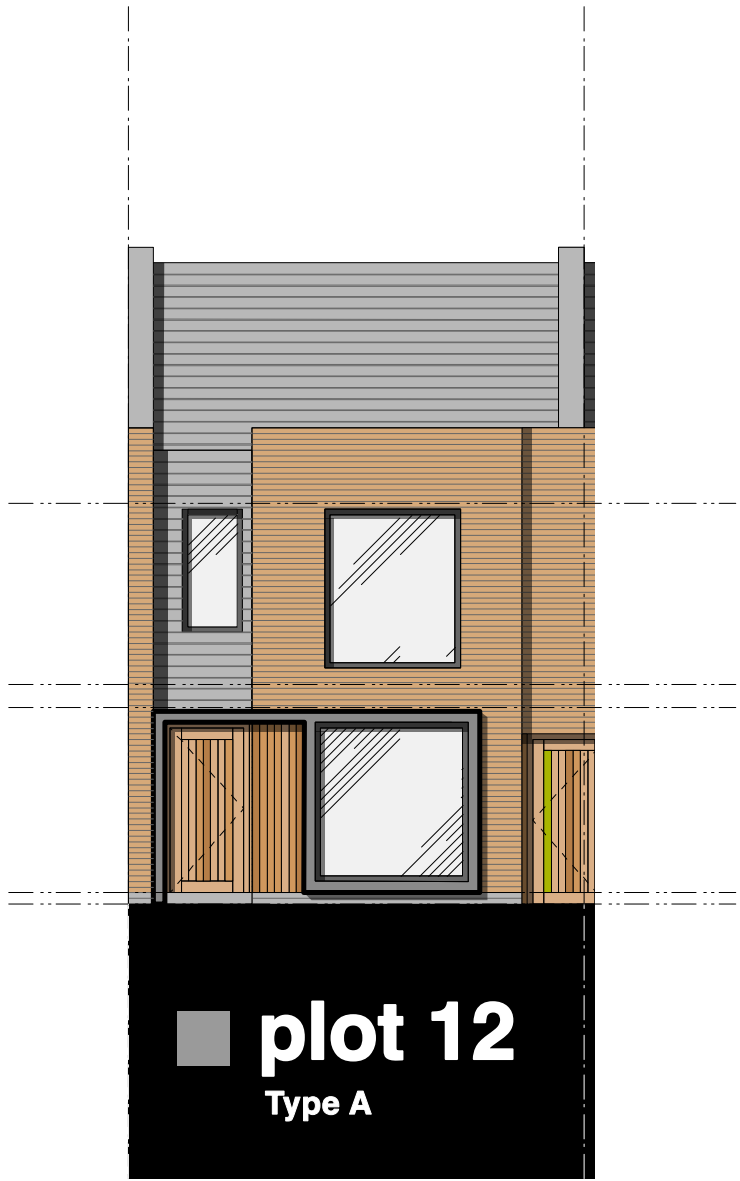
First floor



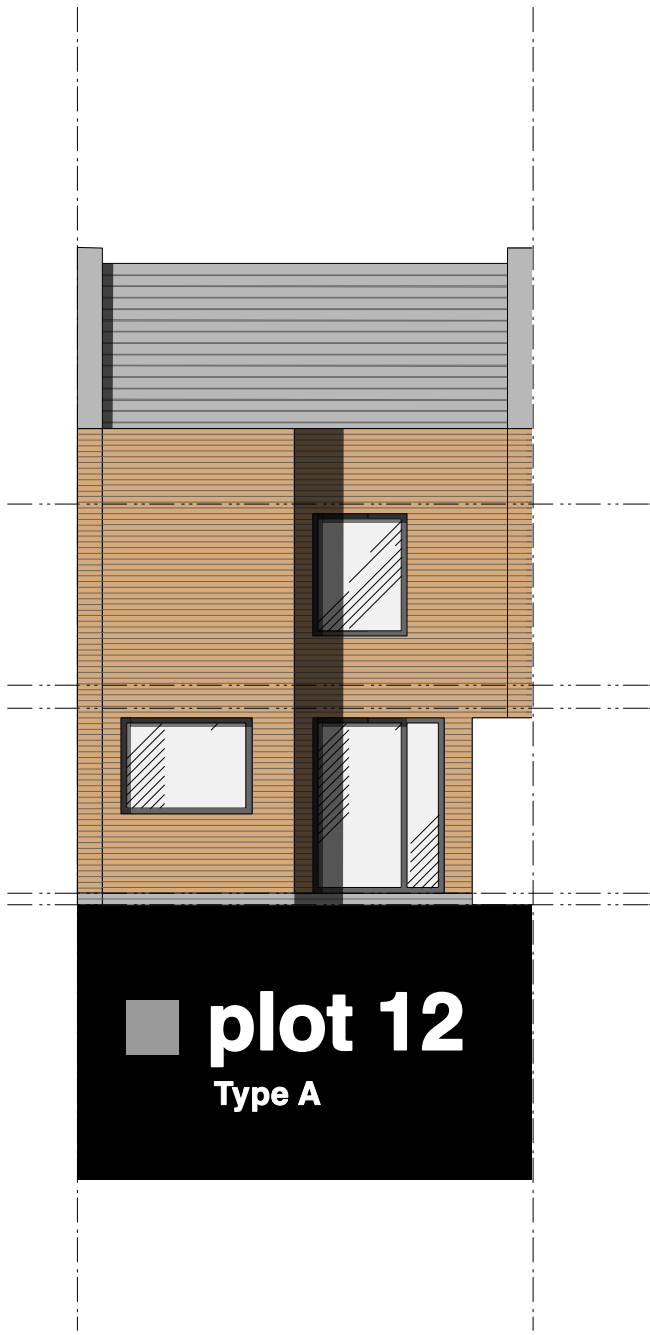
Ground Floor

TYPE A

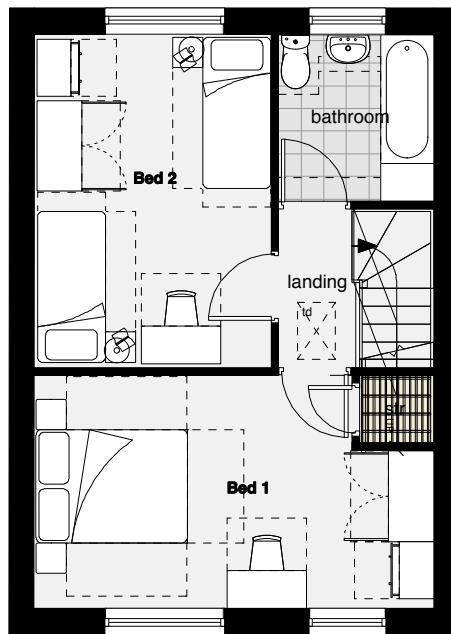
Note : House type has an alternative upper floor bay window option - see street scene



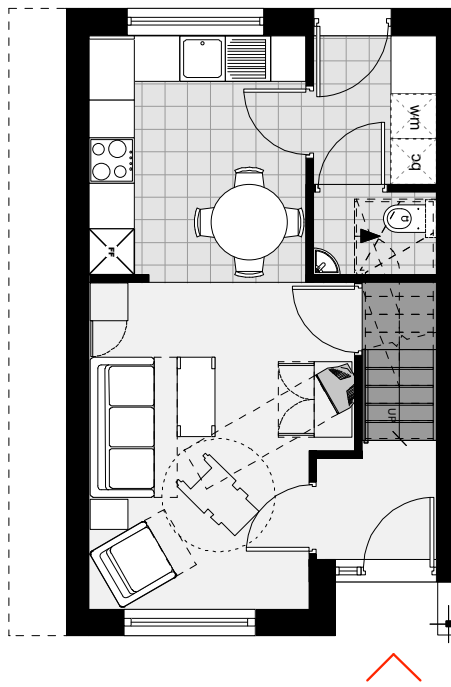
Front elevation



Rear elevation



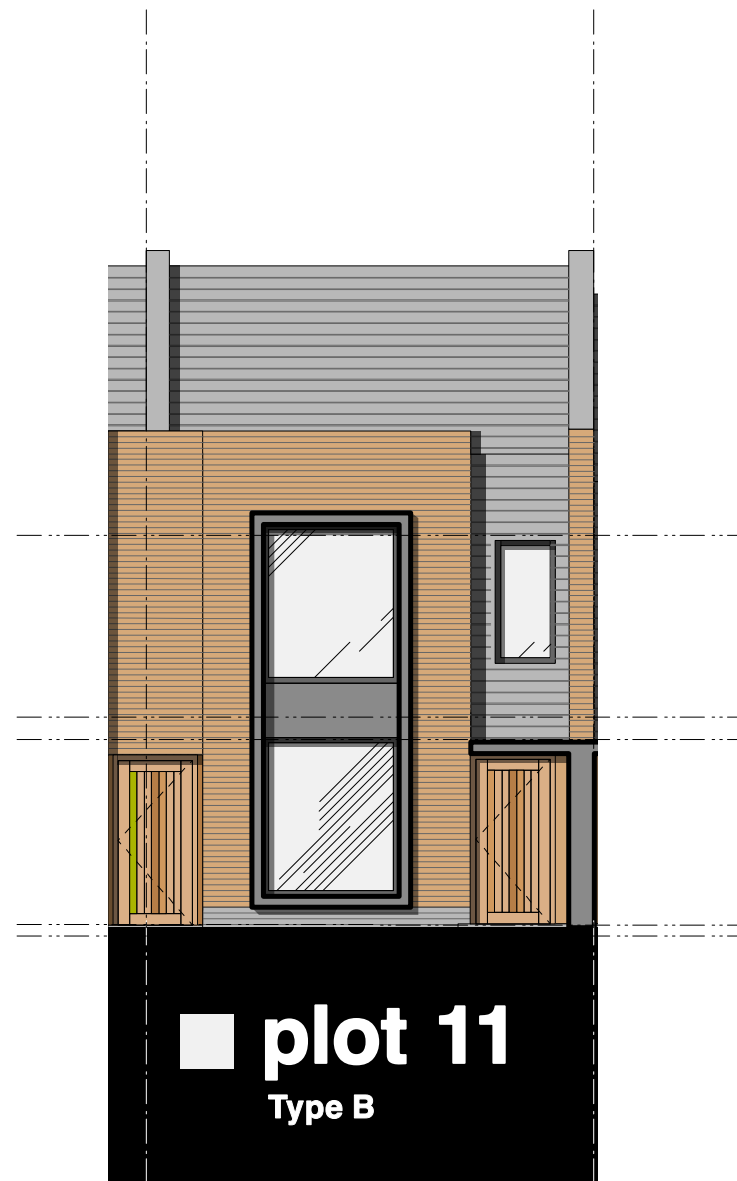
First floor



Ground Floor

TYPE B

Note : House type has an alternative front elevation option without bay window - see street scene



Front elevation



Rear elevation

General notes :

- Units may be Right or left handed to suit layout.

- Colours shown are indicative of colour location and the actual colour is not necessarily shown here. Colours for specific streets are shown on street scene drawings.

- Bay windows may feature in specific locations where surveillance is important. Possible bay locations are shown as dotted.

PLANNING

DK-Architects

28 Old Haymarket
Liverpool
L1 6EJ
T 0151 231 1209
F 0151 227 2063
E mail@dk-architects.com
W www.dk-architects.com

Job:	Duncan Street, Liverpool
Client:	Urban Splash
Drawing Title:	Proposed House Types
Date:	06.12.2013
Drawing no:	P_08
Scale:	1:100 @ A1
Drawn:	