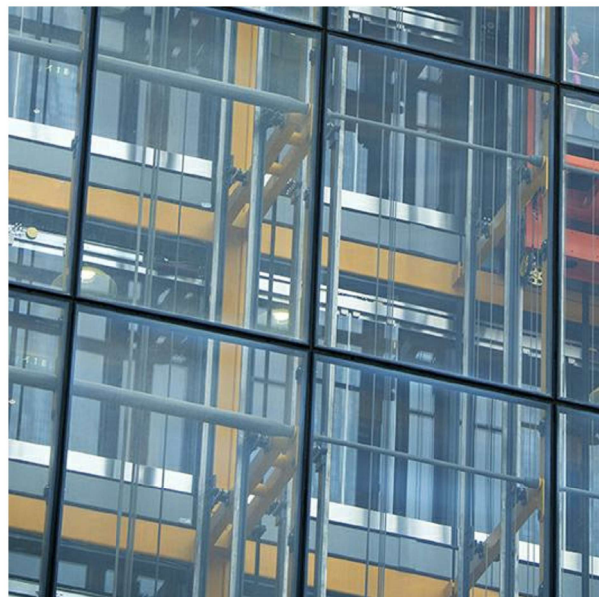
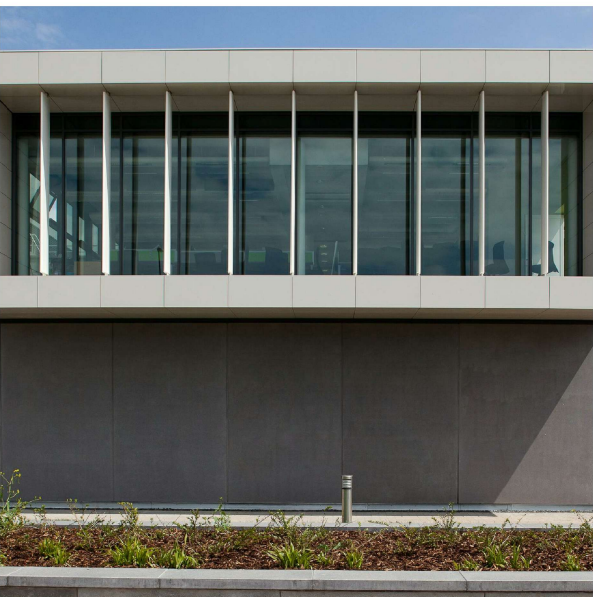




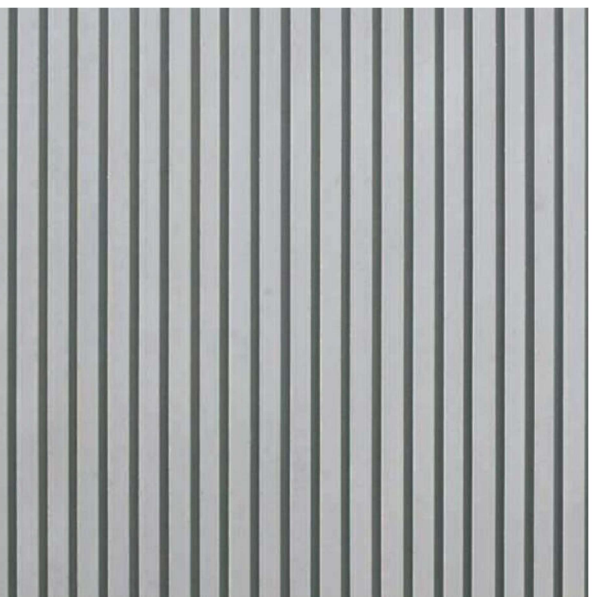
01 - Capless / Unitized Glazing System with fritted glass. System to interglazial fins / solid, openable panels



02 - Horizontal rainscreen soffit.



03 - Precast-Concrete panels.



The use of this data by the recipient acts as an agreement of the following statements. Do not use this data if you do not agree with any of the following statements:

All drawings are based upon site information supplied by third parties and as such their accuracy cannot be guaranteed. All features are approximate and subject to clarification by a detailed topographical survey, statutory service enquiries and confirmation of the legal boundaries.

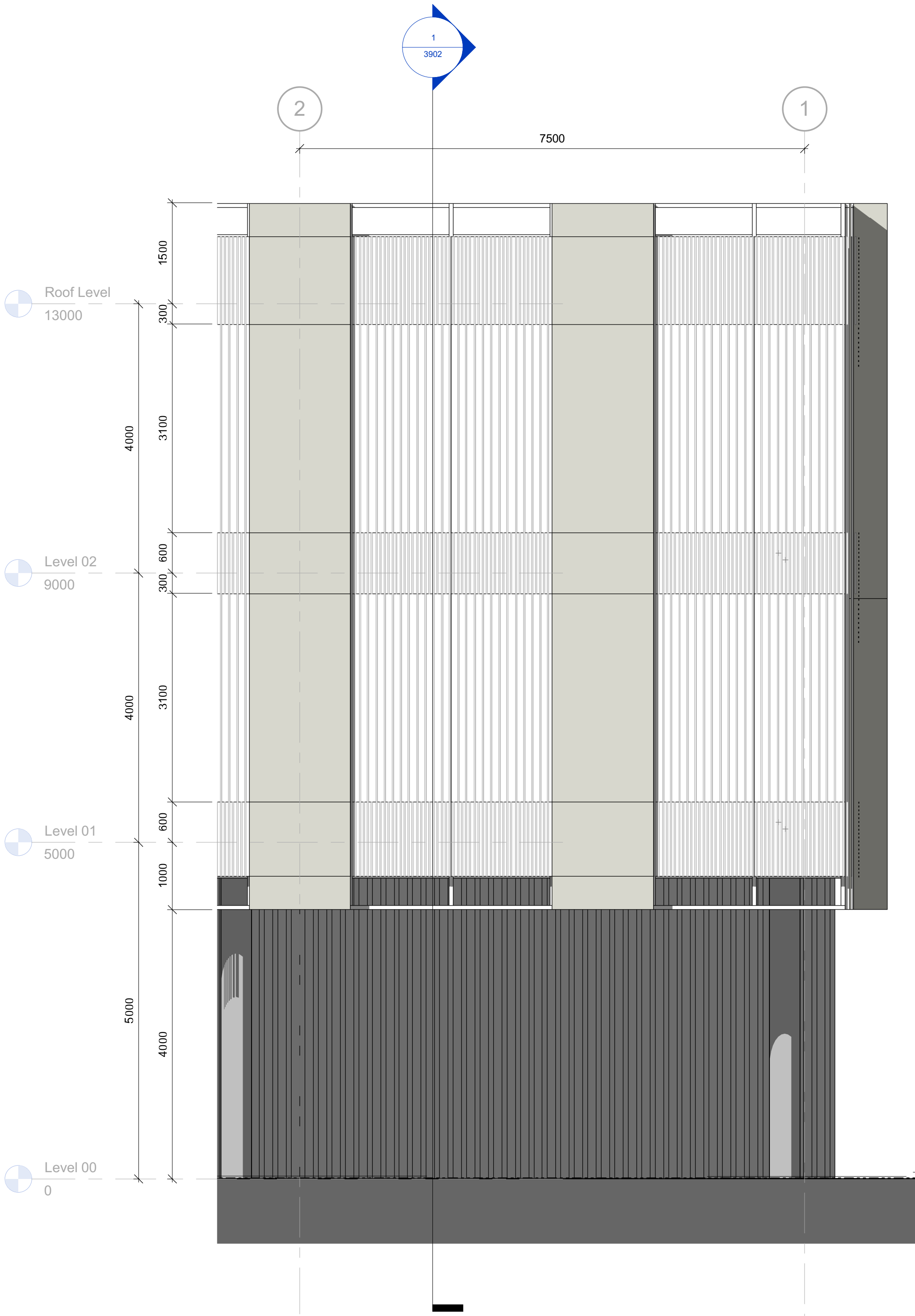
The controlled version of this drawing should be viewed in DWG or PDF format not DWG or other formats. All prints of this drawing must be made in full colour.

Where this drawing has been based upon Ordnance Survey data, it has been reproduced under the terms of Ryder Licence No. 100000144. Reproduction of this drawing in whole or in part is prohibited without the prior permission of Ordnance Survey.

Do not scale the drawing. Use figured dimensions in all cases. Check all dimensions on site. Report any discrepancies in writing to Ryder before proceeding.

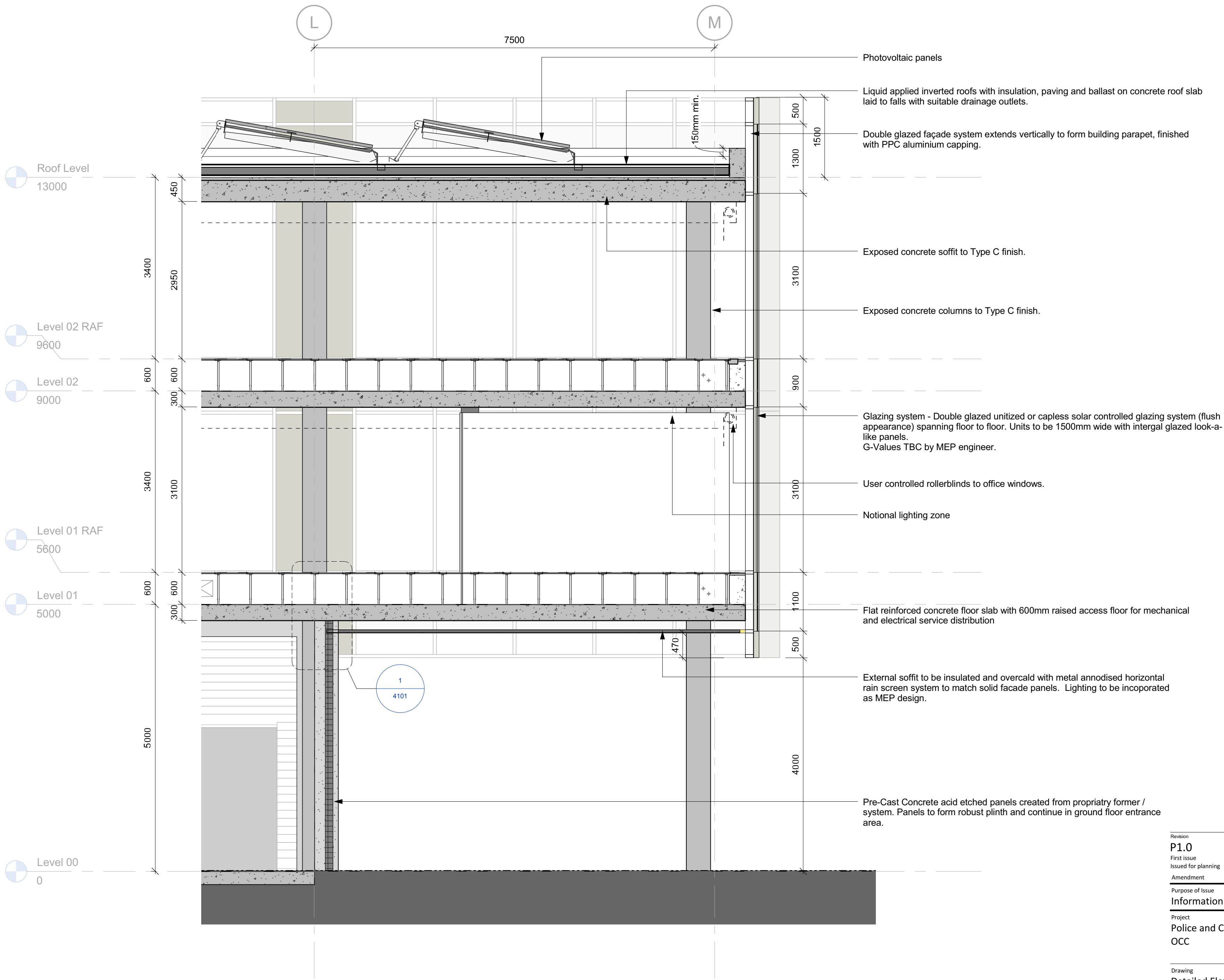
1:50 Scale (m)

0 1 2 3 4



Typical Bay - South Facade Elevation

1: 50



Typical Bay - South Facade Section

1: 50

Revision	Date	Drawn by	Checked by
P1.0	14/07/2015	AYo	JSe
First issue			
Issued for planning			
Amendment			
Purpose of Issue			
Information			
Project			
Police and Crime Commissioner for Merseyside			
OCC			
Drawing			
Detailed Elevation / Section - South Bay			
Drawing No.			
Project ID	Originator	Zone	Level
OCC	-	RYD	- 00 - ZZ - DR - A
Number			
- 3902			
Ryder Project No.			
2789-00	Scale at A1	Drawn By	Status
As indicated	AYo	S2	P1.0
Revision			
P1.0			