

---

# Police and Crime Commissioner for Merseyside OCC

---

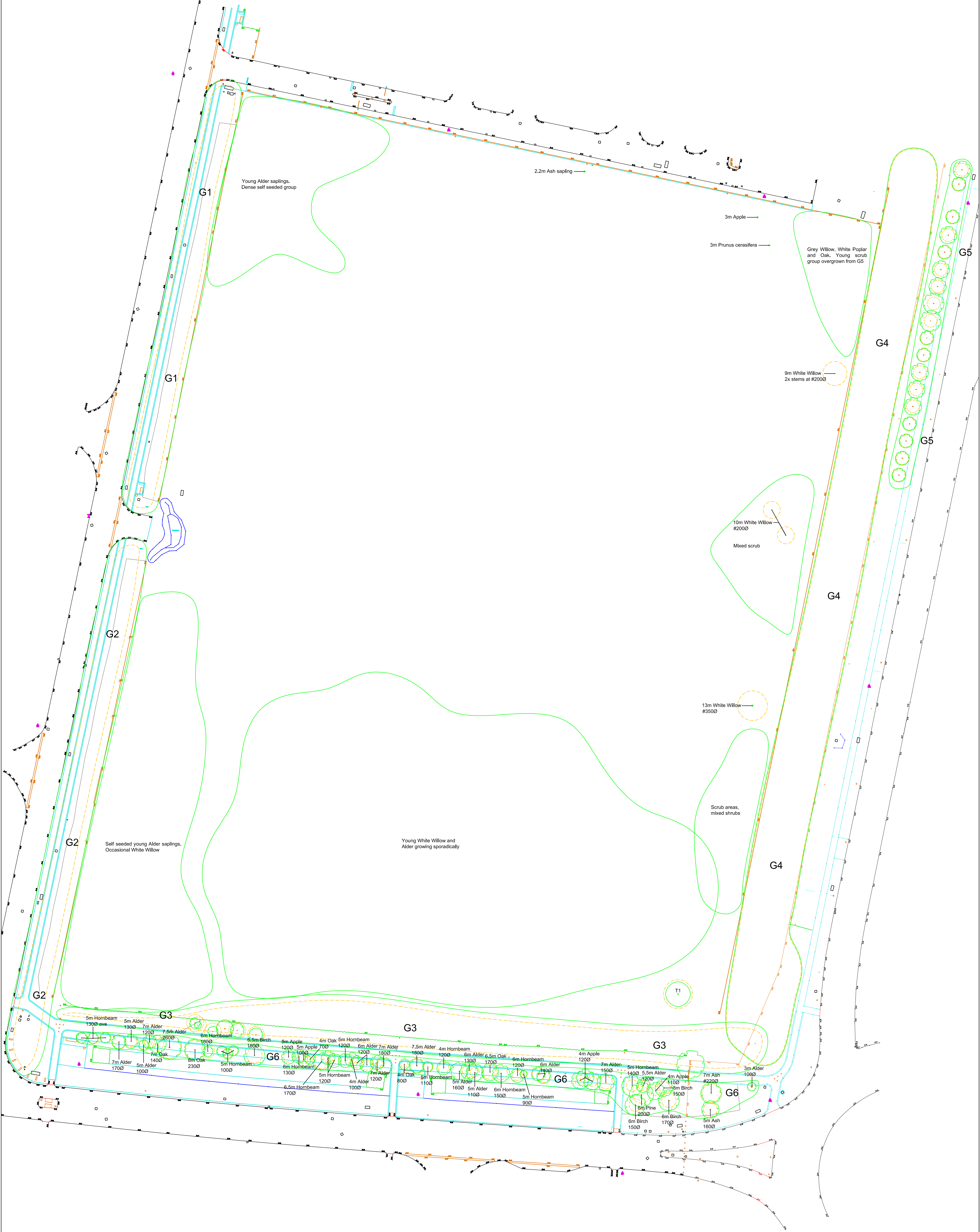
## Tree Survey Report

Doc No: OCC-BDP-00-XX-RP-L-0004

Rev: S1 - P2

Date: 14.07.2015

Tree survey carried out by Ascerta on behalf of BDP



ALL COORDINATES RELATED TO LOCAL GRID LOCATED TO OS NG BY BEST FIT TO DETAIL, EXTRACTED FROM OS DIGITAL DATA.

# Ascerta

Landscape | Trees | Ecology

Alexandra Business Park • Prescott Road  
St Helens • Merseyside WA10 3TP  
t: 0845 463 4404 f: 0845 463 4405  
e: [info@landscapetreescology.com](mailto:info@landscapetreescology.com)  
Web: [www.landscapetreescology.com](http://www.landscapetreescology.com)

REV	DESCRIPTION	DATE

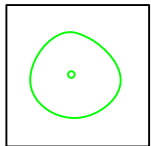
CLIENT:  
BDP

PROJECT:  
Plots 5a, 5b Estuary Business Park, Speke

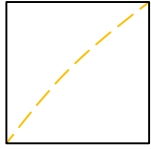
DRAWING TITLE:  
Tree Survey

SCALE: 1:500 @A1	DRAWN BY: CP	DRAWING No:	REV:
DATE: 03/06/2015	CHKD BY: AM	P.542.15.01	-

KEY




Existing tree to be retained



Extent of Root Protection Area for retained trees in accordance with BS5837: 2012 *Trees in relation to design, demolition and construction - Recommendations*

DO NOT SCALE

© This drawing, including the design and technical information contained on it, is the property of Ascerta.  
The drawing may only be used for the specific purpose for which it has been intended and may not be reproduced or copied without prior permission.

Site:	<b>Plots 5a and 5b, Estuary Business Park, L24 8DA</b>	Surveyor:	<b>Robert Armitage</b>	 Landscape   Trees   Ecology
Client:	<b>Building Design Partnership</b>	Survey Date:	<b>11/06/2015</b>	
Brief:	<b>Tree Survey to BS5837:2012</b>	Survey Conditions:	<b>Warm, Sunny</b>	

T. No	Species	Ht (m)	Stem DBH (mm)	RPA Radius	Branch Spread				Ht Crown Clearance (m)	Age Class	P Condition	Structural Condition & General Comments	Preliminary	Est. (yrs)	Cat
				(m)	N	S	E	W					Recommendations		Grade
G1	Birch, Hazel, Alder, Wild Cherry and Hawthorn	14	240	2.88	4.5	4.5	4.5	4.5	0	Y/EM	F	Understorey of Hazel, Hawthorn and Alder with emerging larger Birch and Alder. Overgrown screening group.	No immediate works required. Any trees removed for the proposed development can be replaced with appropriate landscaping.	40+	A2
G2	Ash, Hawthorn, Alder and Hazel	13	200# ave	2.40	4.5	4.5	4.5	4.5	0	Y/EM	F	Understorey of Hazel and Hawthorn with emerging Ash, occasionally Birch.	No immediate works required. Any trees removed for the proposed development can be replaced with appropriate landscaping.	30+	B2
G3	Alder, Willow, White Oak, Hornbeam and Birch	11	200# ave	2.40	4	4	4	4	0	Y	F	Scrub, self seeded group. Predominantly Alder and White Willow. Dense screening group. Occasional Oak. Most trees around 10-15 years old.  Mixed trees (see drawing P.542.15.01 <i>Tree Survey</i> for species, height & stem diameter) growing on the highway verge to the south.	No immediate works required. Any trees removed for the proposed development can be replaced with appropriate landscaping.	40+	A2
T1	White Willow	10	340#	4.08	3.5	3.5	3.5	3.5	0	Y/EM	F	Self seeded tree. Reasonable form.	No immediate works required. If this tree is to be removed, a suitable replacement can be provided at the landscape stage of the project.	30	B2
G4	Elder, Sycamore, White Willow, Oak, Hawthorn, Birch, Wild Cherry, Hazel, Alder and Grey Willow	19	400#	4.80	5	5	5	5	0	Y/EM/M	F	Boundary screening group. High planting density. Predominantly White Willow making up the taller trees. Understorey around 6-7m. Average DBH around 150; however, larger trees within group have 350-400mm stem diameters.	No immediate works required. Any trees removed for the proposed development can be replaced with appropriate landscaping.	30	B2

NOTE: The Category Grade applied to trees surveyed is consistent with the recommendations within Table 1 of BS5837: 2012, however this does not necessarily correlate with the visual importance of a tree within the wider landscape, nor does it dictate which trees should be retained at the cost of quality development. Where trees are to be lost to accommodate a development, recommendations will be made such as to provide suitable mitigation and compensation, and to integrate the development into the wider landscape.

#### Key to Abbreviations & Headings

T. No.: Tree number (T = Tree, G = Group, W = Woodland, H = Hedge, Cpt. = Compartment)

Stem DBH (Diameter at Breast Height): Measured at 1.5m above ground level\*

Ht Crown Clearance: Canopy ground clearance

Structural Condition: Description of any observed defects

Cat. Grade: Tree quality assessment in accordance with BS5837: 2012

Species: Common name used

Root Protection Area Radius: Root Protection Area as per BS5837: 2012

Age Class: Y = Young, EM = Early Mature, M = Mature, OM = Over mature, D = Dead

Preliminary Recommendations: Made in respect of known / intended use of the site

\* For groups of trees, the stem diameter of the largest tree in the group is generally used


# Denotes estimated DBH where access was not possible

Ht: Approximate height of tree from ground level in metres

Branch Spread: Extent of canopy spread in metres to each of the four cardinal points

P (Physiological) Condition: G = Good, F = Fair, P = Poor, D = Dead

Est. (yrs): Estimated remaining contribution in years

Site:	Plots 5a and 5b, Estuary Business Park, L24 8DA	Surveyor:	Robert Armitage	 Landscape   Trees   Ecology
Client:	Building Design Partnership	Survey Date:	11/06/2015	
Brief:	Tree Survey to BS5837:2012	Survey Conditions:	Warm, Sunny	

Page 2 of 2

T. No	Species	Ht (m)	Stem DBH (mm)	RPA Radius	Branch Spread				Ht Crown Clearance (m)	Age Class	P Condition	Structural Condition & General Comments	Preliminary	Est. (yrs)	Cat
				(m)	N	S	E	W					Recommendations		Grade
G5	Ash	6	150 ave	1.80	3	3	3	3	2.5	Y/EM	F	Linear feature. Crown lifted in past. Numerous flush cut wounds. Located off site in the highway verge.	No immediate works required.	20+	B2
G6	Alder, Hornbeam, Oak, Birch, Apple	7.5	Max 230	2.76	3	3	3	3	1.5	Y/EM	F	Planted group along the highway verge.	No immediate works required.	30+	B2

NOTE: The Category Grade applied to trees surveyed is consistent with the recommendations within Table 1 of BS5837: 2012, however this does not necessarily correlate with the visual importance of a tree within the wider landscape, nor does it dictate which trees should be retained at the cost of quality development. Where trees are to be lost to accommodate a development, recommendations will be made such as to provide suitable mitigation and compensation, and to integrate the development into the wider landscape.

#### Key to Abbreviations & Headings

T. No.: Tree number (T = Tree, G = Group, W = Woodland, H = Hedge, Cpt. = Compartment)  
Stem DBH (Diameter at Breast Height): Measured at 1.5m above ground level\*  
Ht Crown Clearance: Canopy ground clearance  
Structural Condition: Description of any observed defects  
Cat. Grade: Tree quality assessment in accordance with BS5837: 2012

Species: Common name used  
Root Protection Area Radius: Root Protection Area as per BS5837: 2012  
Age Class: Y = Young, EM = Early Mature, M = Mature, OM = Over mature, D = Dead  
Preliminary Recommendations: Made in respect of known / intended use of the site  
\* For groups of trees, the stem diameter of the largest tree in the group is generally used  
# Denotes estimated DBH where access was not possible

Ht: Approximate height of tree from ground level in metres  
Branch Spread: Extent of canopy spread in metres to each of the four cardinal points  
P (Physiological) Condition: G = Good, F = Fair, P = Poor, D = Dead  
Est. (yrs): Estimated remaining contribution in years

© Ascerta