

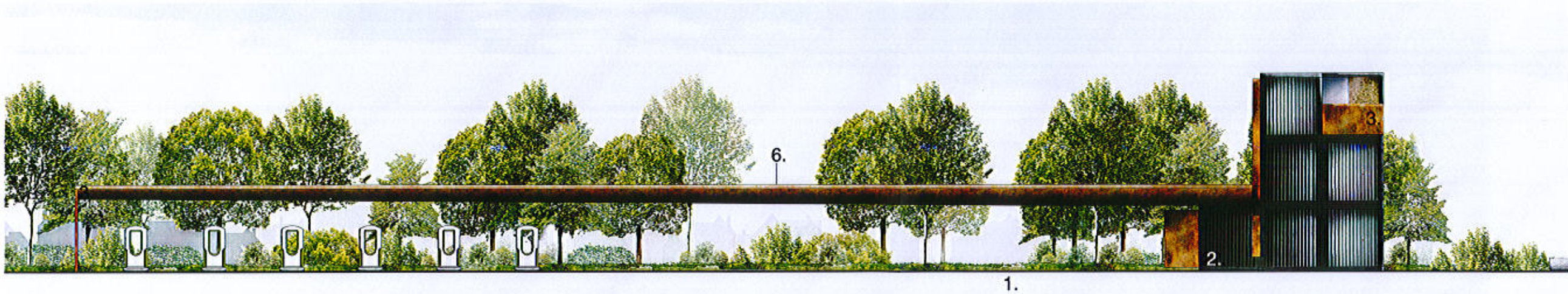


WILDSTONE

22 Berghem Mews
Blythe Road
London
W14 0HN
www.wildstone.co.uk
020 7313 9571



A:A Site Elevation



B:B Site Elevation

Title
Materials and Planting Elevations

Project
32 Bowring Park Road

Client
Wildstone

Job No. 4955
Issued 20/10/16

Drawn By UT
Checked By CB

Signed By
Scale NTS @ A3

Key
1. Tarmac
2. Painted Steel Containers
3. Corten
4. Shrubbery
5. Glass
6. Solar Panels

All information is to be checked on site for accuracy and fit. Only drawings with WD status with the most recent revision are to be used for construction. Report any discrepancies and omissions to Wildstone