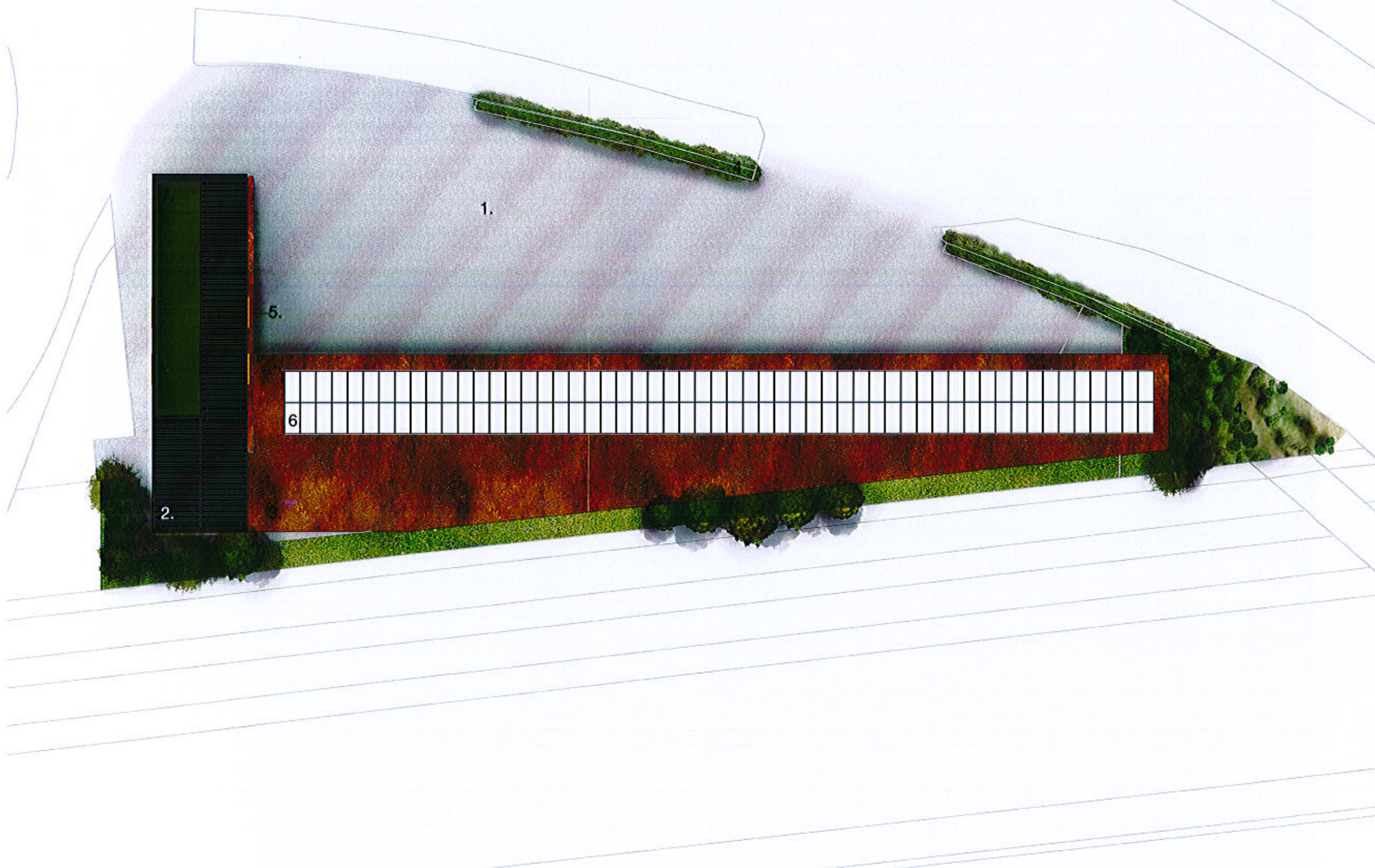




Bowring Park Road



**WILDSTONE**

22 Berghem Mews  
Blythe Road  
London  
W14 0HN  
www.wildstone.co.uk  
020 7313 9571

**Title**  
Materials and Planting Plan

**Project**  
32 Bowring Park Road

**Client**  
Wildstone

**Job No.** 4955 **Issued** 20/10/16

**Drawn By** UT **Checked By** CB

**Signed By** **Scale** 1:200 @ A3

**Key**  
1. Tarmac  
2. Painted Steel Containers  
3. Corten  
4. Shrubbery  
5. Glass  
6. Solar Panels  
7. Easy Grass

All information is to be checked on site for accuracy and fit. Only drawings with WD status with the most recent revision are to be used for construction. Report any discrepancies and omissions to Wildstone