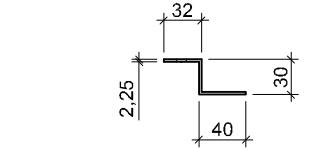
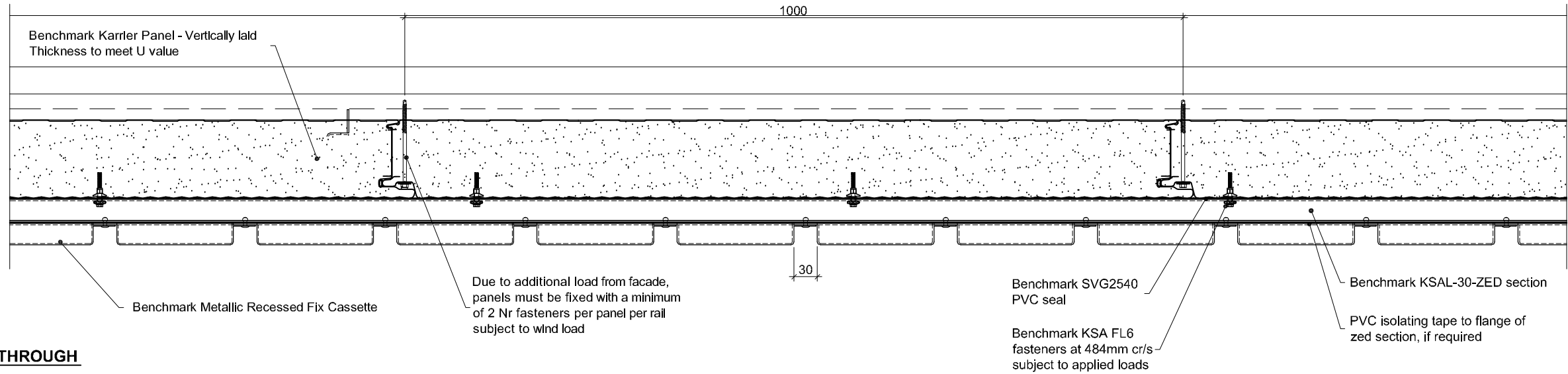
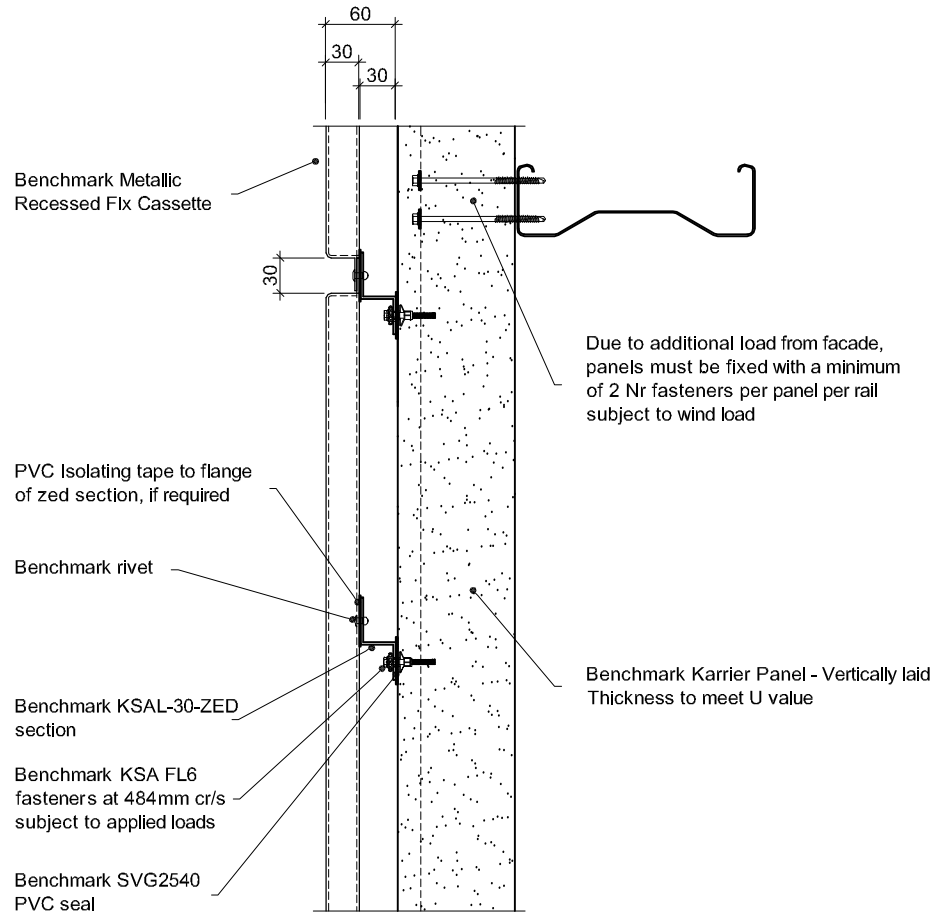


PLAN SECTION THROUGH



Benchmark KSAL-30-ZED Section

CROSS SECTION THROUGH



Material, Gauges and Finishes and Colours
Please refer to latest product guide and website.

Panel Sizes and Tolerances
Depends on material choice - please refer to current data sheet.

Structural Rails
Design for lateral loads and for gravity load of façade system. System weights are provided in current product data sheets.

Benchmark KSA FL6 Fasteners
Must not be positioned less than 100mm from a site cut edge.

Dissimilar Metals
Contact between dissimilar metals must be prevented with PVC isolation tape.

Handling
The surface of certain metals such as copper are susceptible to finger marking. Suitable clean gloves should be worn when handling these materials.

Open Edges
Open edges should be fitted with insect mesh

Cavity Barriers
Cavity barriers are not supplied with the Benchmark Facade system and must be specified and sourced separately.

Steelwork Tolerances
The permissible steelwork tolerance between the bearing planes of adjacent supports is $\pm 5\text{mm}$

Project:

System: Metallic Recessed Fix + Karrier Panel

Drawing Title: System Layout

Drawn By: BT

Date: 18/06/2012

Drawing N°. : MRF Vt KP Vt 001

Rev: 0

Greenfield Business Park No.2

Greenfield, Holywell

Flintshire. CH8 7GJ

Tel: 01352 716 100

Fax: 01352 710 161

Technical: 0800 970 9036

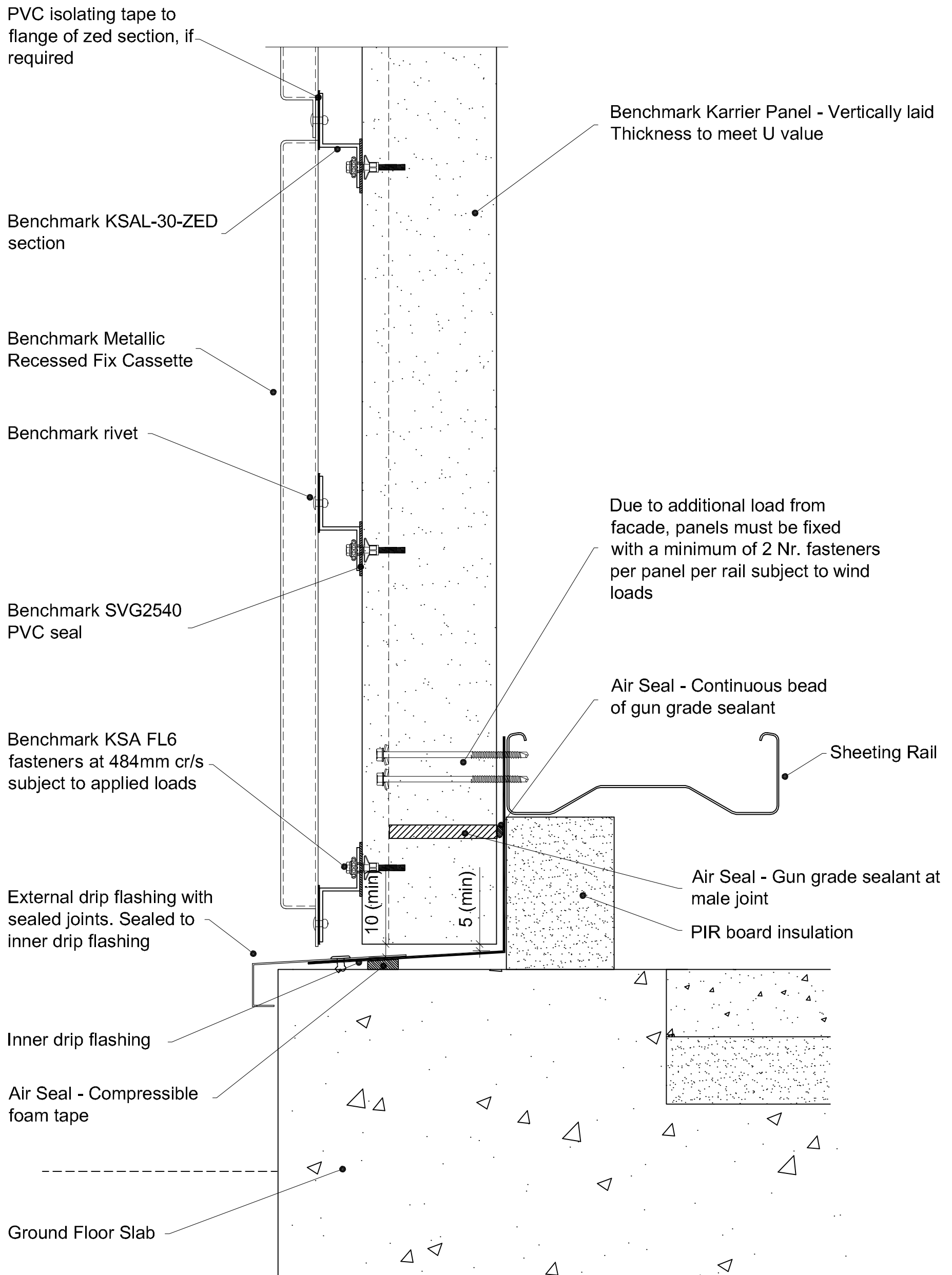
Email: technical@kingspanbenchmark.com

Website: www.kingspanbenchmark.com

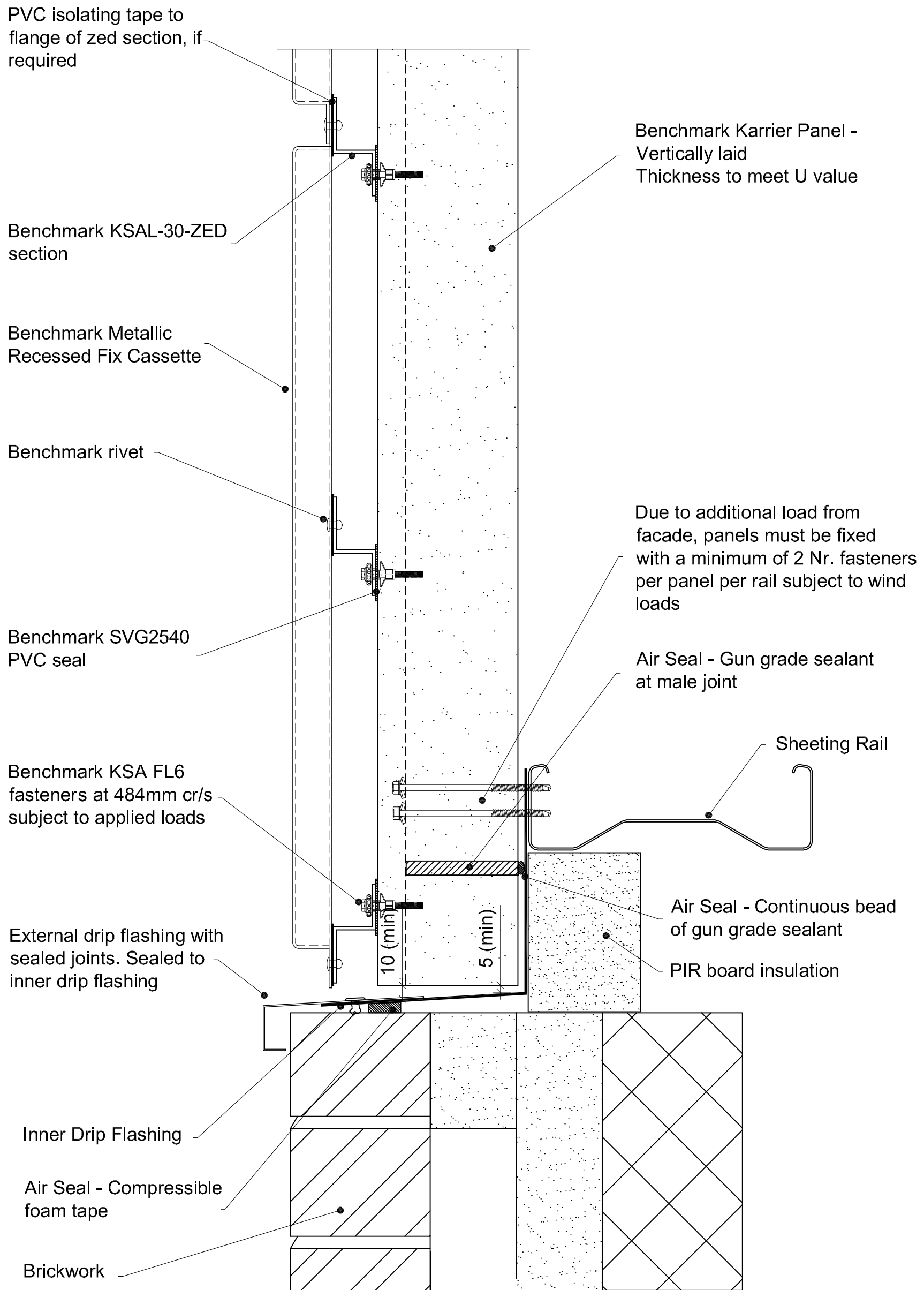


By Kingspan

© Kingspan 2013



Project:		Greenfield Business Park No.2	
System: Metallic Recessed Fix + Karrier Panel		Greenfield, Holywell	
Drawing Title: Drip Detail		Flintshire. CH8 7GJ	
Drawn By: BT	Date: 18/06/2012	Tel: 01352 716 100	
Drawing N ^o .: MRF Vt KP Vt 002	Rev: 0	Fax: 01352 710 161	
		Technical: 0800 970 9036	
		Email: technical@kingspanbenchmark.com	
		Website: www.kingspanbenchmark.com	



Project:		Greenfield Business Park No.2 Greenfield, Holywell Flintshire. CH8 7GJ Tel: 01352 716 100 Fax: 01352 710 161 Technical: 0800 970 9036 Email: technical@kingspanbenchmark.com Website: www.kingspanbenchmark.com	
System: Metallic Recessed Fix + Karrier Panel		 <p>By Kingspan</p> <p>© Kingspan 2013</p>	
Drawing Title: Drip Detail			
Drawn By: BT	Date: 18/06/2012		
Drawing N ^o .: MRF Vt KP Vt 003	Rev: 0		

Benchmark Karrier Panel
Vertically laid
Thickness to meet U value

Benchmark KSA FL6 fasteners
at 484mm cr/s subject to applied
loads

Benchmark SVG2540 PVC seal

Benchmark KSAL-30-ZED section

Benchmark rivet

PVC isolating tape to flanges
of zed section, if required

Through fasteners securing
end of zed section and panel
at 500mm maximum centers

Benchmark Metallic Recessed Fix
Cassette External Corner Unit

Vinyl faced butyl rubber sealing strip

Fire Rated Canister
Applied Insulation

Through fasteners securing
end of zed section and panel
at 500mm maximum centers

Sheeting Rail

Air Seal - Continuous Bead Of Gun Grade
Sealant

Internal cleader angle by steel
sub-contractor with Air seal - Vapourflex
sealant applied at joints

Air Seal - Continuous bead of
gun grade sealant

Sheeting Rail

Benchmark Karrier Panel - Vertically laid
Thickness to meet U value

Benchmark Metallic Recessed Fix Cassette

Benchmark KSA FL6 fasteners
at 484mm cr/s subject to applied loads



Project:

System: Metallic Recessed Fix + Karrier Panel

Drawing Title: External Corner

Drawn By: BT

Date: 18/06/2012

Drawing N°. : MRF Vt KP Vt 004

Rev: 0

Greenfield Business Park No.2
Greenfield, Holywell
Flintshire. CH8 7GJ
Tel: 01352 716 100
Fax: 01352 710 161

Technical: 0800 970 9036

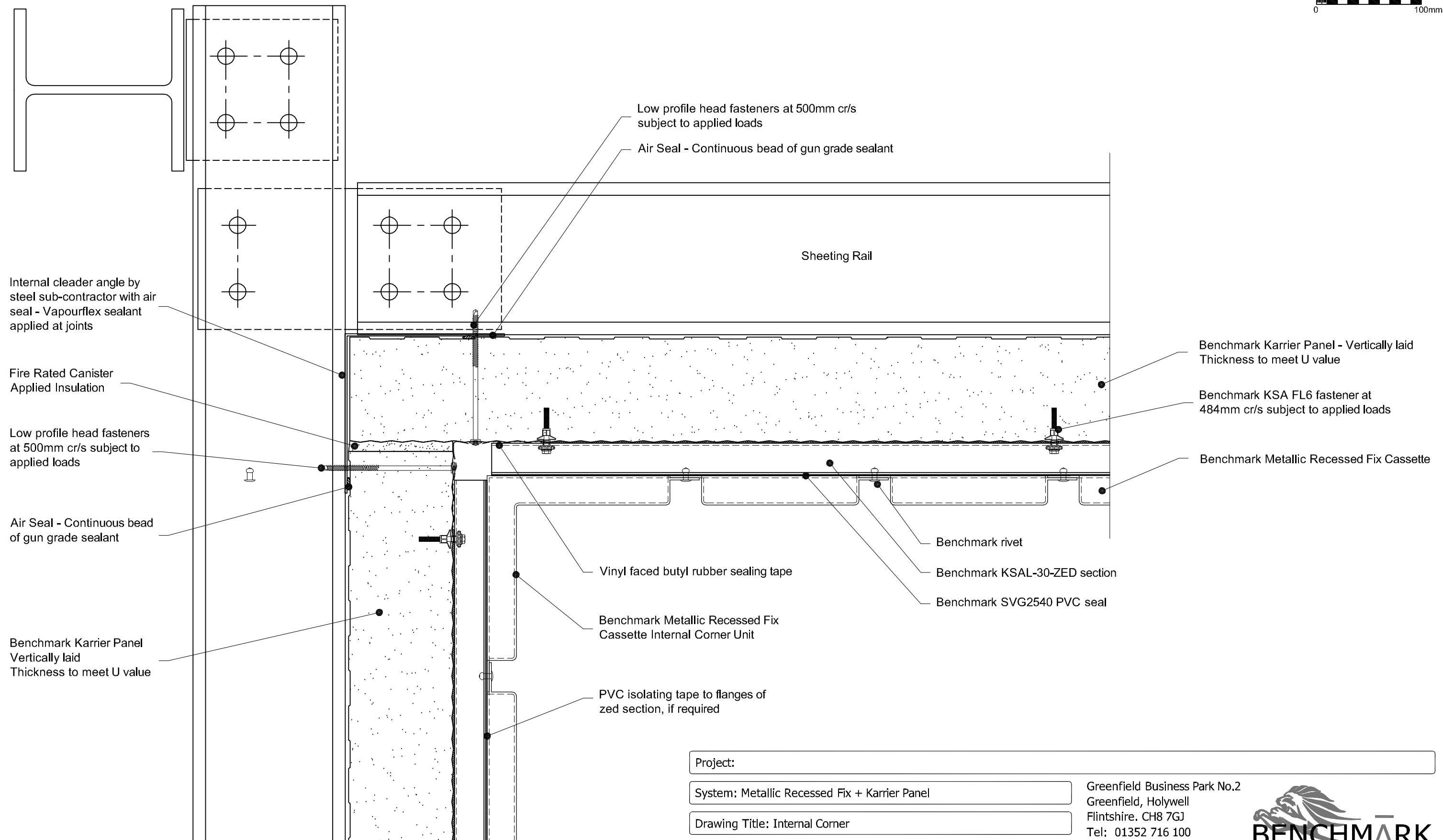
Email: technical@kingspanbenchmark.com

Website: www.kingspanbenchmark.com



By Kingspan

© Kingspan 2013



Project:

System: Metallic Recessed Fix + Karrier Panel

Drawing Title: Internal Corner

Drawn By: BT

Date: 18/06/2012

Drawing N^o.: MRF Vt KP Vt 005

Rev: 0

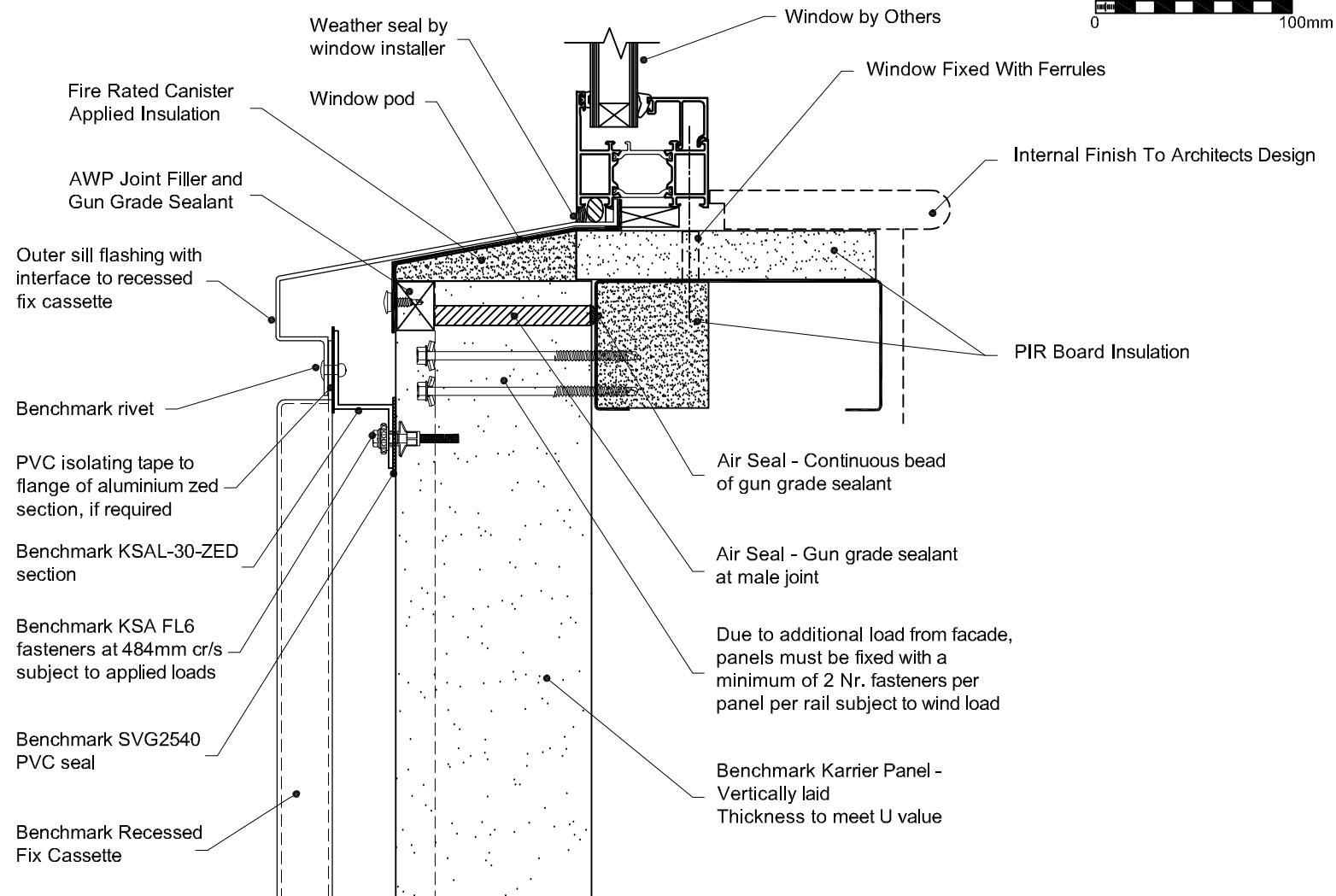
Greenfield Business Park No.2
Greenfield, Holywell
Flintshire. CH8 7GJ
Tel: 01352 716 100
Fax: 01352 710 161

Technical: 0800 970 9036
Email: technical@kingspanbenchmark.com
Website: www.kingspanbenchmark.com



By Kingspan

© Kingspan 2013



Project:

System: Metallic Recessed Fix + Karrier Panel

Drawing Title: Window Sill

Drawn By: BT

Date: 18/06/2012

Drawing N^o.: MRF Vt KP Vt 006

Rev: 0

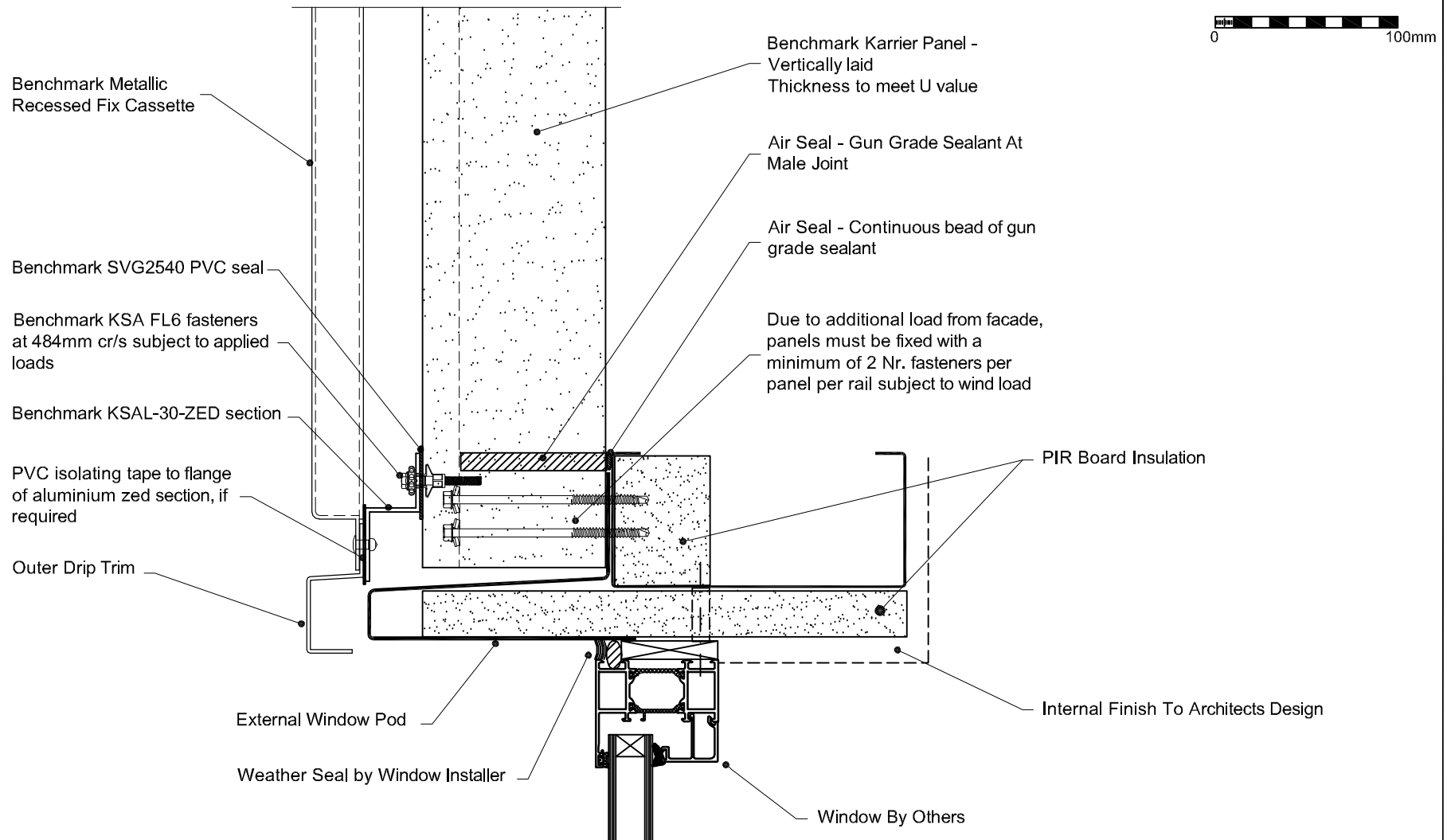
Greenfield Business Park No.2
Greenfield, Holywell
Flintshire, CH8 7GJ
Tel: 01352 716 100
Fax: 01352 710 161
Technical: 0800 970 9036

Email: technical@kingspanbenchmark.com
Website: www.kingspanbenchmark.com




By Kingspan

© Kingspan 2013



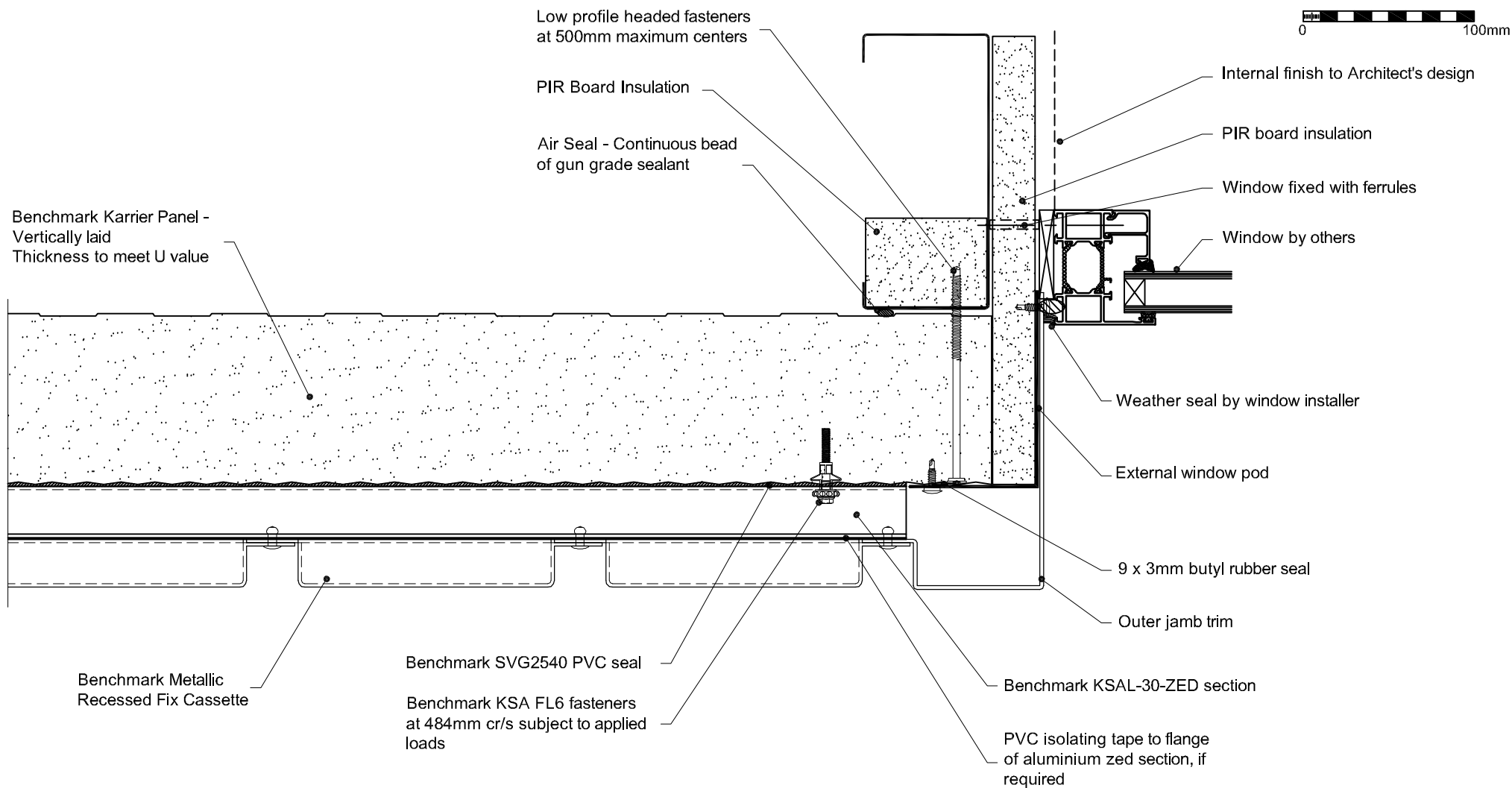
Project:	
System: Metallic Recessed Fix + Karrier Panel	
Drawing Title: Window Head	
Drawn By: BT	Date: 18/06/2012
Drawing N ^o .: MRF Vt KP Vt 007	Rev: 0

Greenfield Business Park No.2
Greenfield, Holywell
Flintshire, CH8 7GJ
Tel: 01352 716 100
Fax: 01352 710 161
Technical: 0800 970 9036
Email: technical@kingspanbenchmark.com
Website: www.kingspanbenchmark.com



By Kingspan

© Kingspan 2013



Project:

System: Metallic Recessed Fix + Karrier Panel

Drawing Title: Window Jamb

Drawn By: BT

Date: 18/06/2012

Drawing N^o.: MRF Vt KP Vt 008

Rev: 0

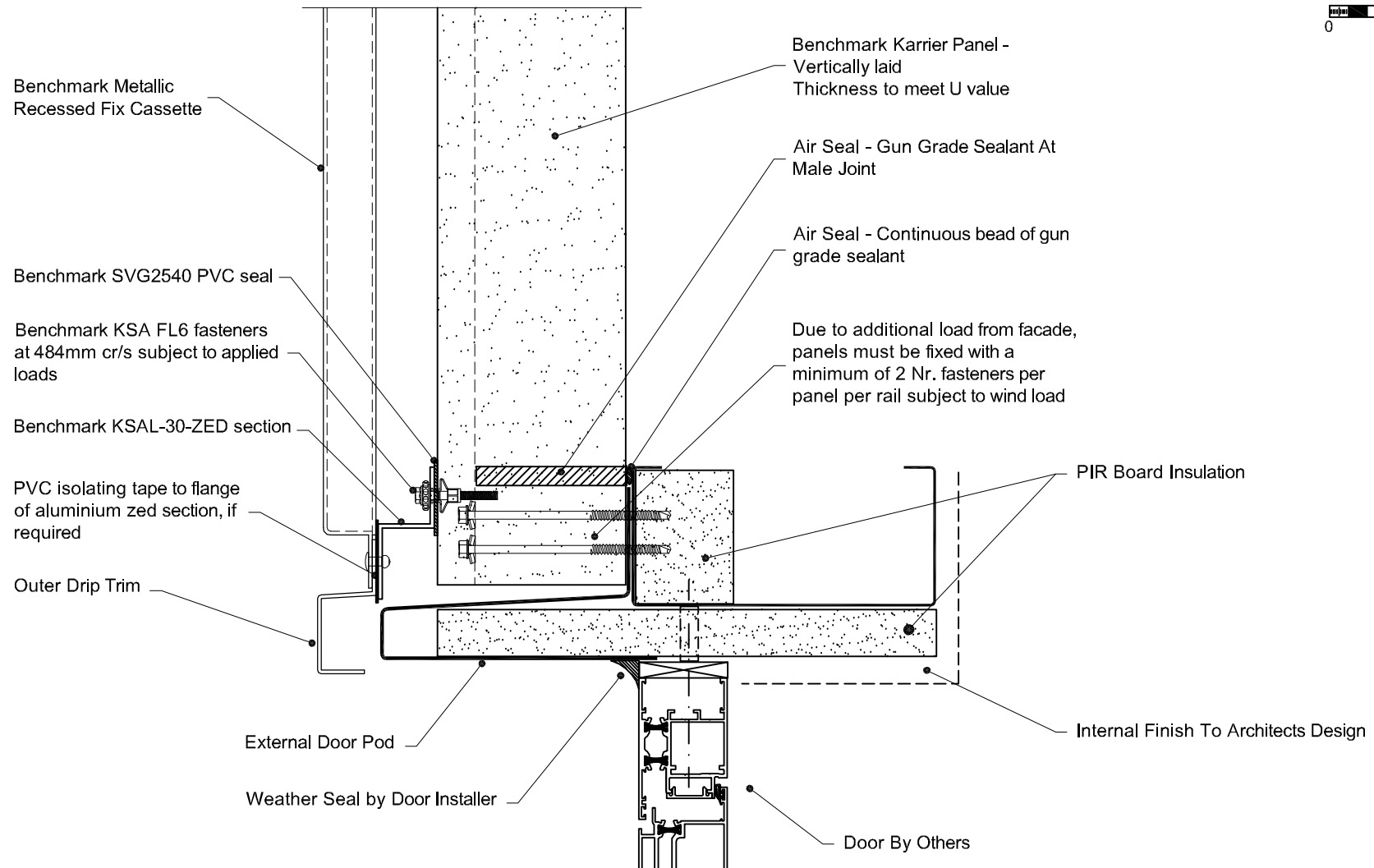
Greenfield Business Park No.2
Greenfield, Holywell
Flintshire, CH8 7GJ
Tel: 01352 716 100
Fax: 01352 710 161
Technical: 0800 970 9036

Email: technical@kingspanbenchmark.com
Website: www.kingspanbenchmark.com



By Kingspan

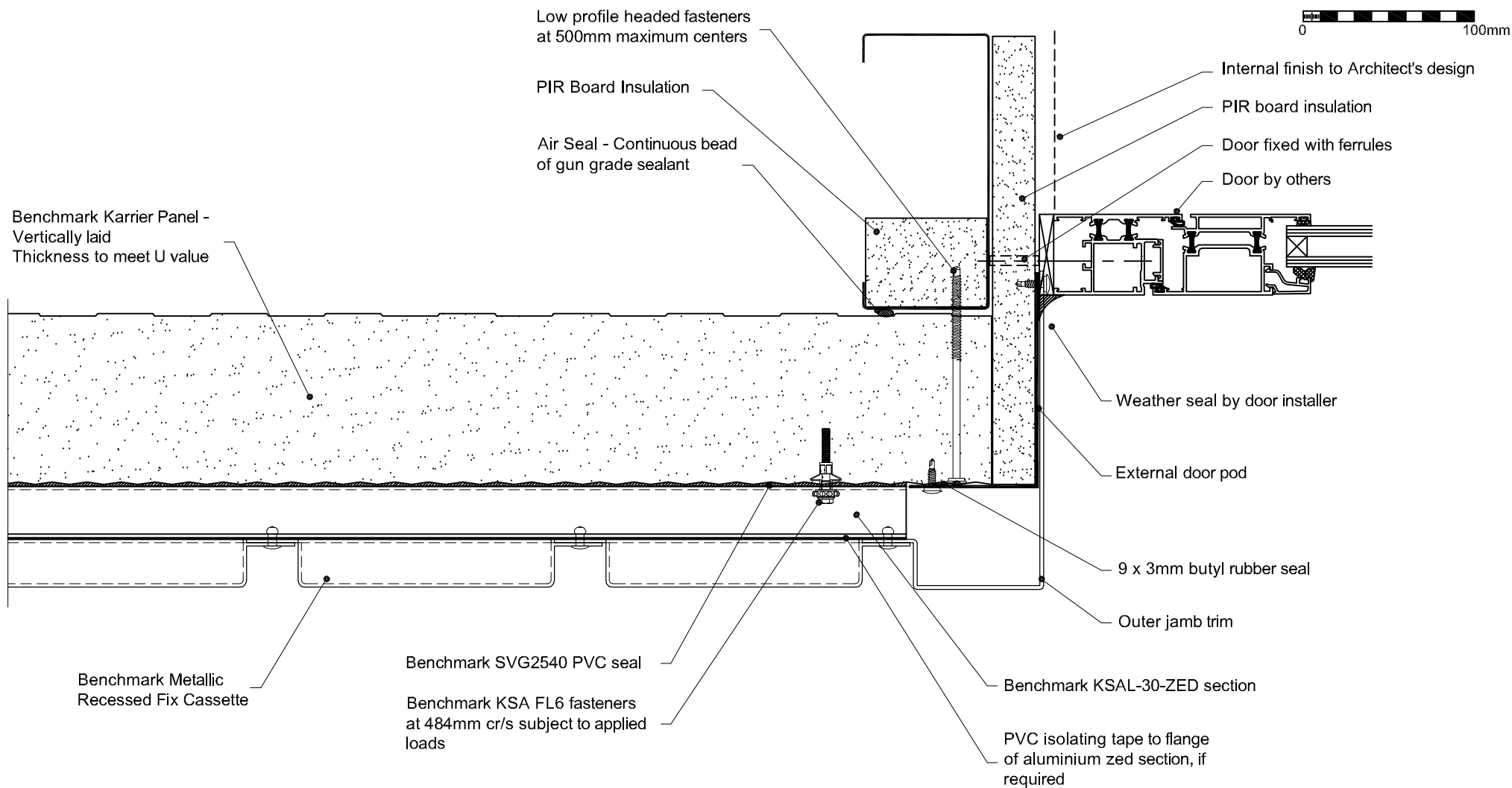
© Kingspan 2013



Project:	
System: Metallic Recessed Fix + Karrier Panel	
Drawing Title: Door Head	
Drawn By: BT	Date: 18/06/2012
Drawing N°.: MRF Vt KP Vt 009	Rev: 0

Greenfield Business Park No.2
Greenfield, Holywell
Flintshire, CH8 7GJ
Tel: 01352 716 100
Fax: 01352 710 161
Technical: 0800 970 9036
Email: technical@kingspanbenchmark.com
Website: www.kingspanbenchmark.com

BENCHMARK
By Kingspan
© Kingspan 2013



Project:

System: Metallic Recessed Fix + Karrier Panel

Drawing Title: Door Jamb

Drawn By: BT

Date: 18/06/2012

Drawing N^o.: MRF Vt KP Vt 010

Rev: 0

Greenfield Business Park No.2
Greenfield, Holywell
Flintshire, CH8 7GJ
Tel: 01352 716 100
Fax: 01352 710 161

Technical: 0800 970 9036
Email: technical@kingspanbenchmark.com
Website: www.kingspanbenchmark.com



By Kingspan

© Kingspan 2013



Benchmark Metallic
Recessed Fix Cassette

Benchmark SVG2540
PVC seal

Benchmark KSA FL6
fasteners at 484mm cr/s
subject to applied loads

Benchmark KSAL-30-ZED
section

PVC isolating tape to
flange of aluminium
zed section, if required

Benchmark rivet

EPDM Membrane (by others)
installed in sequence on site

Curtain walling system (by others)

Benchmark Karrier Panel -
Vertically laid
Thickness to meet U value

Air Seal - Continuous Bead Of
Gun Grade Sealant

Due To Additional Load From
facade, Panels Must Be Fixed
with a minimum of 2 Nr.
Fasteners Per panel per rail
subject to wind loads

Air Seal - Gun grade sealant
at male joint

PIR insulation board

Internal finish to Architects design

Air Seal - Internal membrane
(by others) installed in
sequence on site

PIR insulation board

Project:

System: Metallic Recessed Fix + Karrier Panel

Drawing Title: Curtain Walling Head

Drawn By: BT

Date: 18/06/2012

Drawing N°.: MRF Vt KP Vt 011

Rev: 0

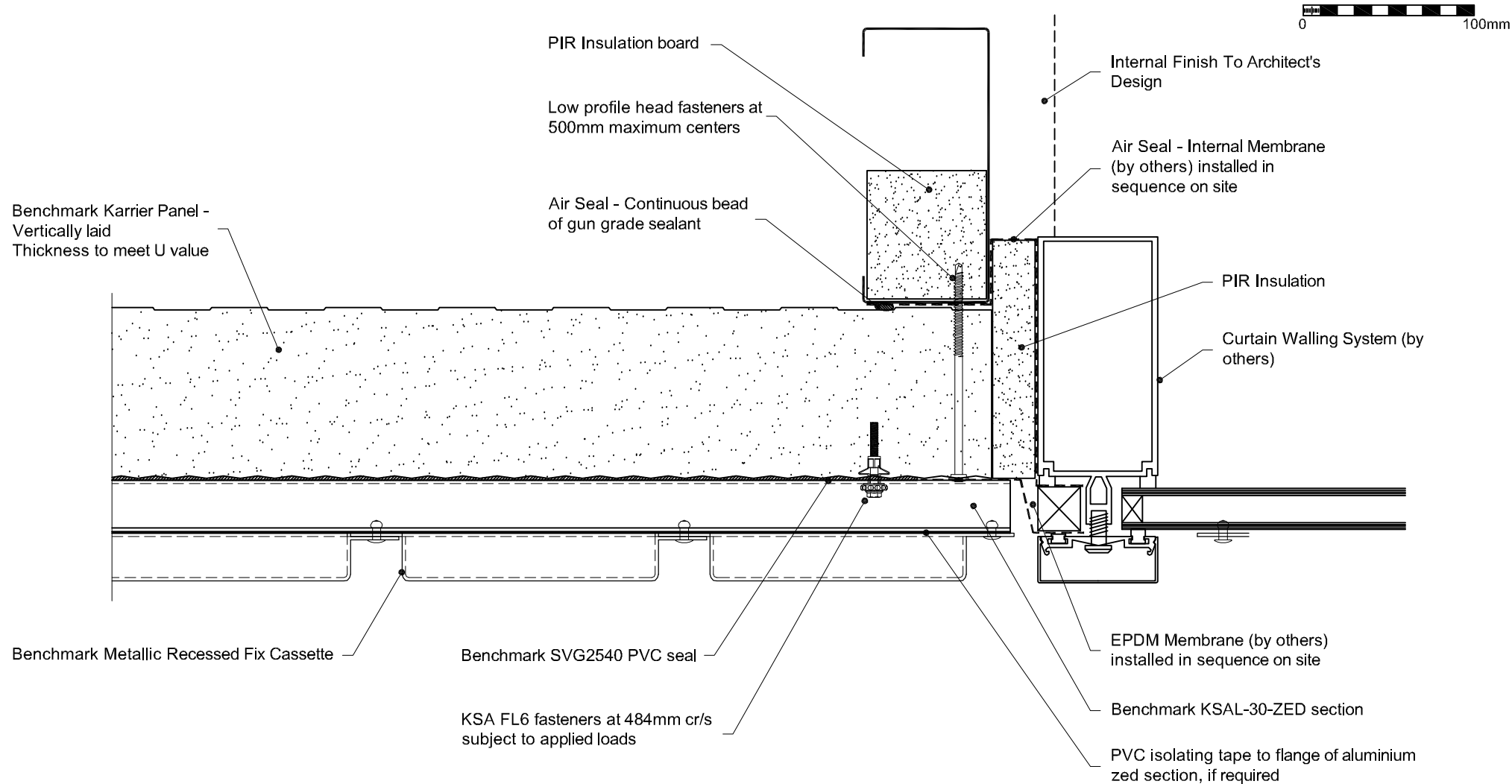
Greenfield Business Park No.2
Greenfield, Holywell
Flintshire, CH8 7GJ
Tel: 01352 716 100
Fax: 01352 710 161

Technical: 0800 970 9036
Email: technical@kingspanbenchmark.com
Website: www.kingspanbenchmark.com



By Kingspan

© Kingspan 2013



Project:

System: Metallic Recessed Fix + Karrier Panel

Drawing Title: Curtain Walling Jamb

Drawn By: BT

Date: 18/06/2012

Drawing N°. : MRF Vt KP Vt 012

Rev: 0

Greenfield Business Park No.2
Greenfield, Holywell
Flintshire. CH8 7GJ
Tel: 01352 716 100
Fax: 01352 710 161

Technical: 0800 970 9036

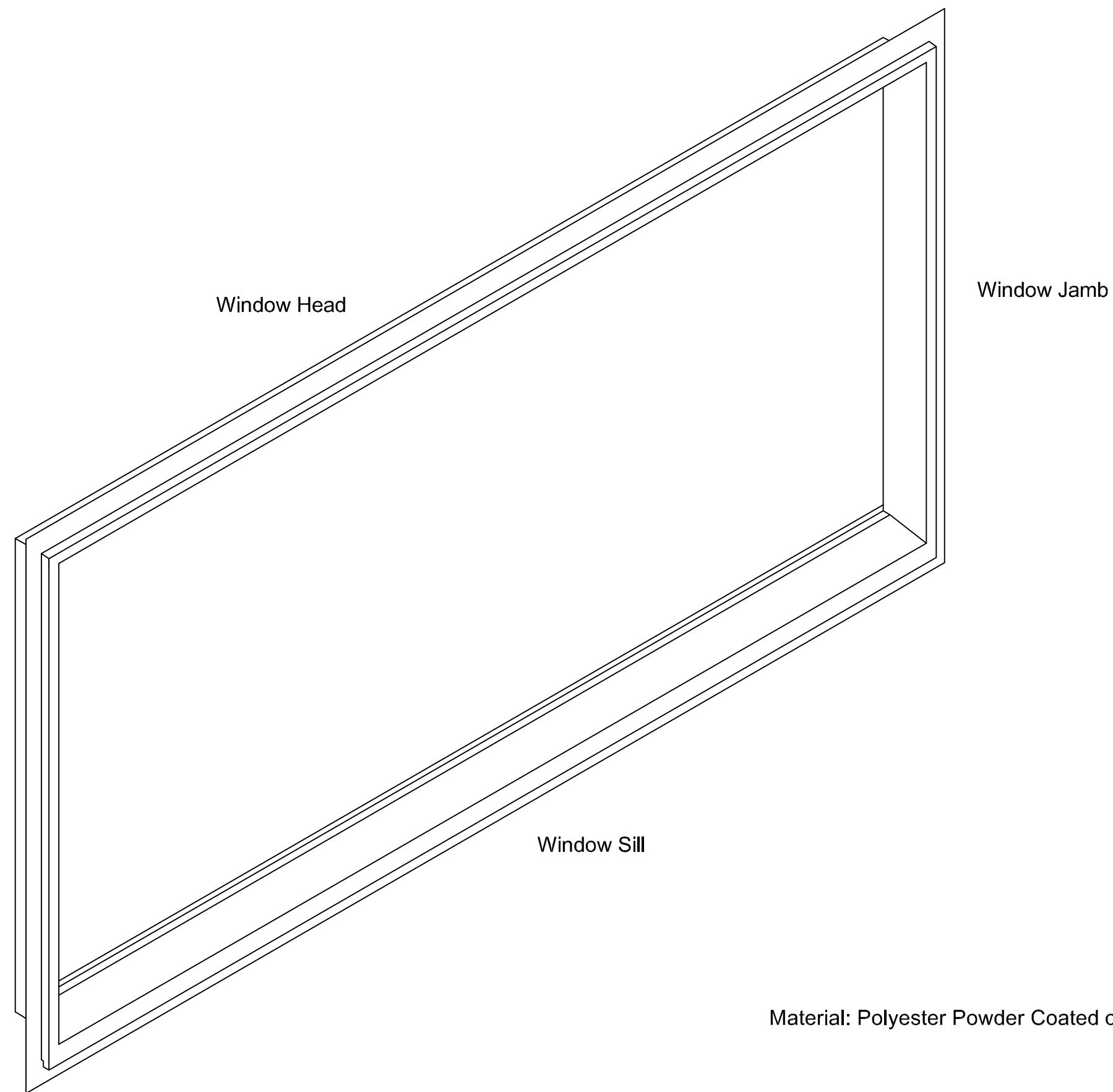
Email: technical@kingspanbenchmark.com

Website: www.kingspanbenchmark.com



By Kingspan

© Kingspan 2013



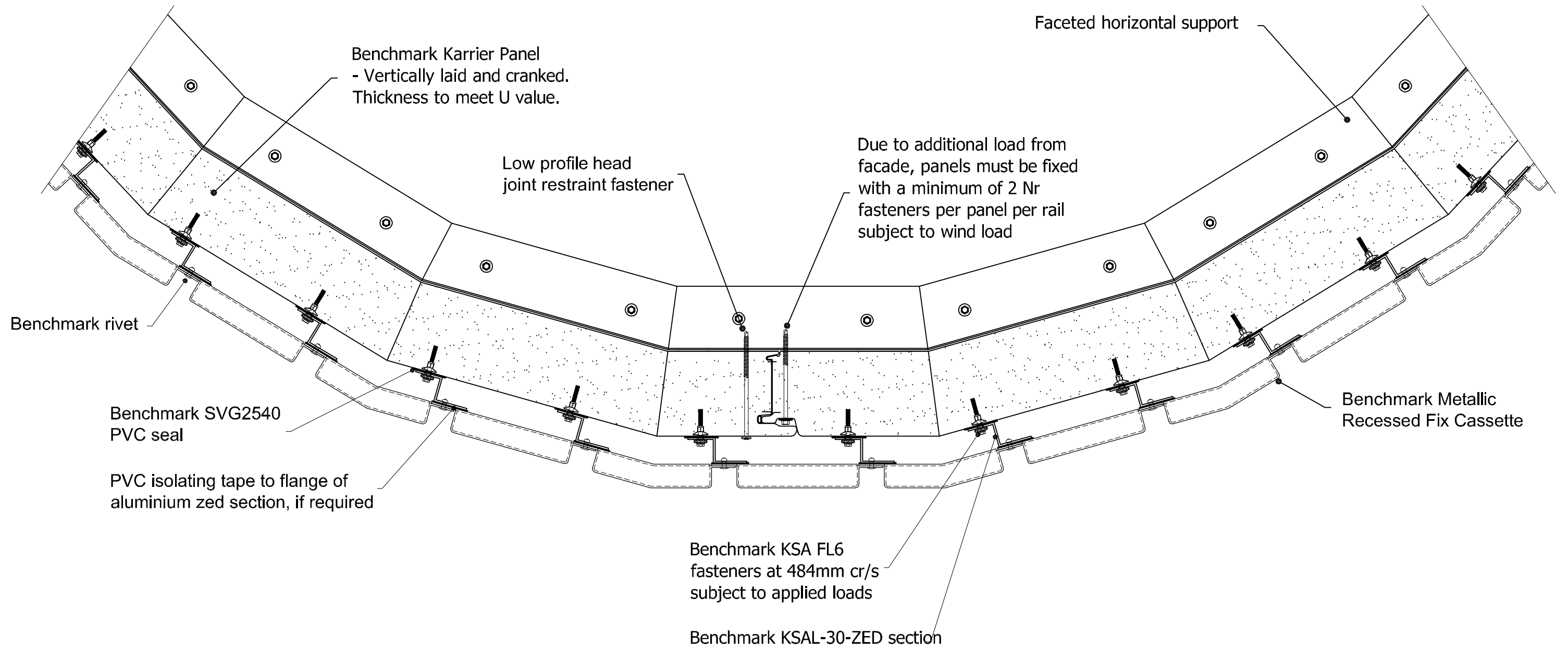
Material: Polyester Powder Coated or Mill Finished Aluminium


Generic only - component
dimensions tailored to suit specific
application

Project:	
System: Metallic Recessed Fix + Karrier Panel	Greenfield Business Park No.2 Greenfield, Holywell Flintshire. CH8 7GJ Tel: 01352 716 100 Fax: 01352 710 161 Technical: 0800 970 9036 Email: technical@kingspanbenchmark.com Website: www.kingspanbenchmark.com
Drawing Title: Window Pod - Isometric	
Drawn By: BT	Date: 18/06/2012
Drawing N°. MRF Vt KP Vt 013	Rev: 0



By Kingspan
© Kingspan 2013



Project:		 By Kingspan © Kingspan 2013
System: Metallic Recessed Fix + Karrier Panel		
Drawing Title: Curved Wall Detail		
Drawn By: BT	Date: 18/06/2012	
Drawing N ^o . MRF Vt KP Vt 014	Rev: 0	
Greenfield Business Park No.2 Greenfield, Holywell Flintshire. CH8 7GJ Tel: 01352 716 100 Fax: 01352 710 161 Technical: 0800 970 9036 Email: technical@kingspanbenchmark.com Website: www.kingspanbenchmark.com		

AWP joint filler and gun grade sealant

Air Seal - Gun grade sealant at male joint

Air Seal - Continuous bead of gun grade sealant

Due to additional load from facade, panels must be fixed with a minimum of 2 Nr fasteners per panel per rail subject to wind load

PVC isolating tape to flange of aluminium zed section, if required

Benchmark rivet

Benchmark KSAL-30-ZED section

Benchmark SVG2540 PVC seal

Benchmark Metallic Recessed Fix Cassette

Benchmark KSA FL6 fasteners at 484mm cr/s subject to applied loads

Parapet Coping

Membrane taken over parapet

PIR board insulation

Kingspan Topdek Insulated Membrane Roof
Thickness to meet U value

Kingspan Topdek Insulated Membrane Roof
Thickness to meet U value



Project:

System: Metallic Recessed Fix + Karrier Panel

Drawing Title: Parapet detail

Drawn By: BT

Date: 18/06/2012

Drawing N°.: MRF Vt KP Vt 015

Rev: 0

Greenfield Business Park No.2

Greenfield, Holywell

Flintshire. CH8 7GJ

Tel: 01352 716 100

Fax: 01352 710 161

Technical: 0800 970 9036

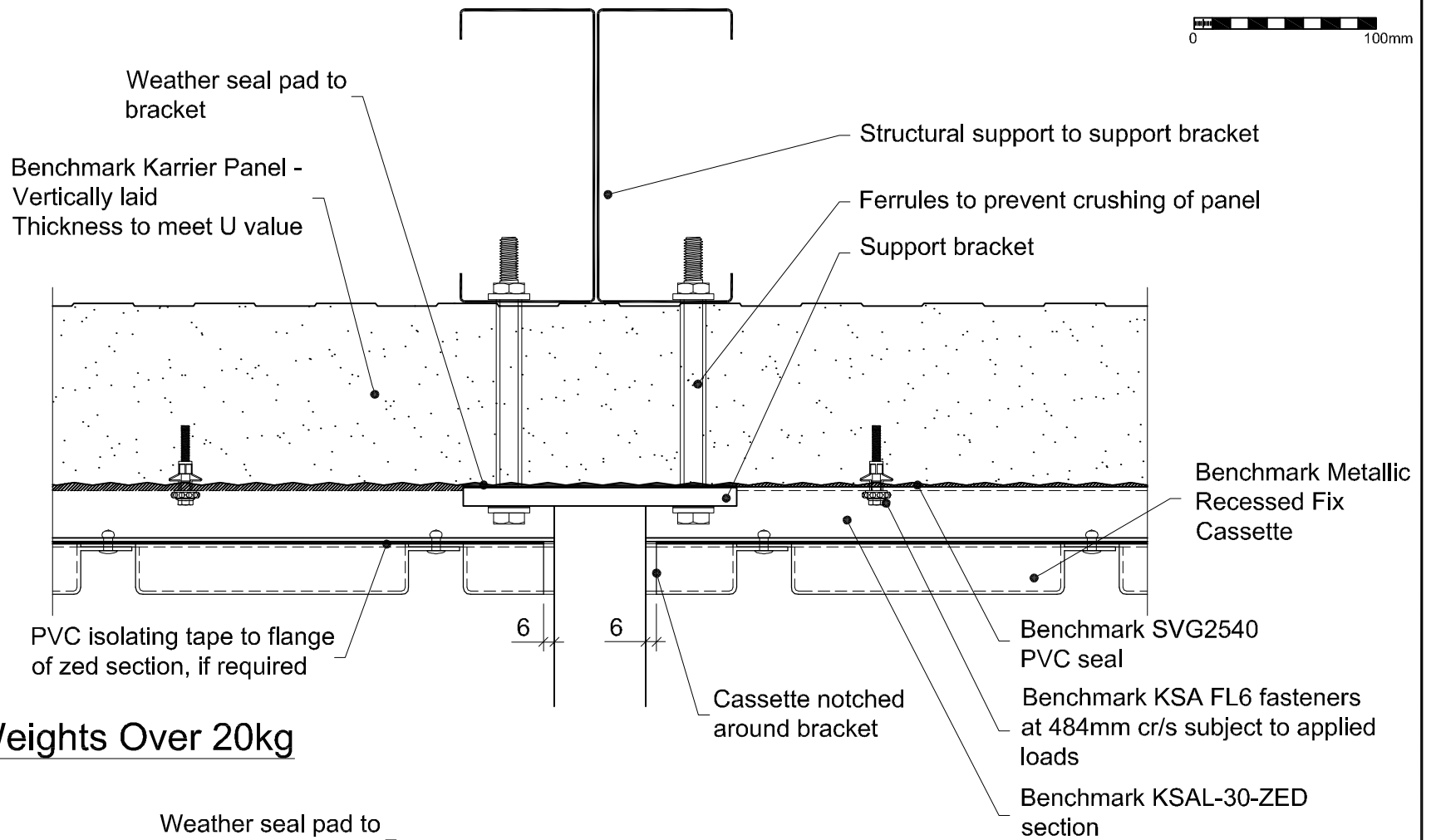
Email: technical@kingspanbenchmark.com

Website: www.kingspanbenchmark.com

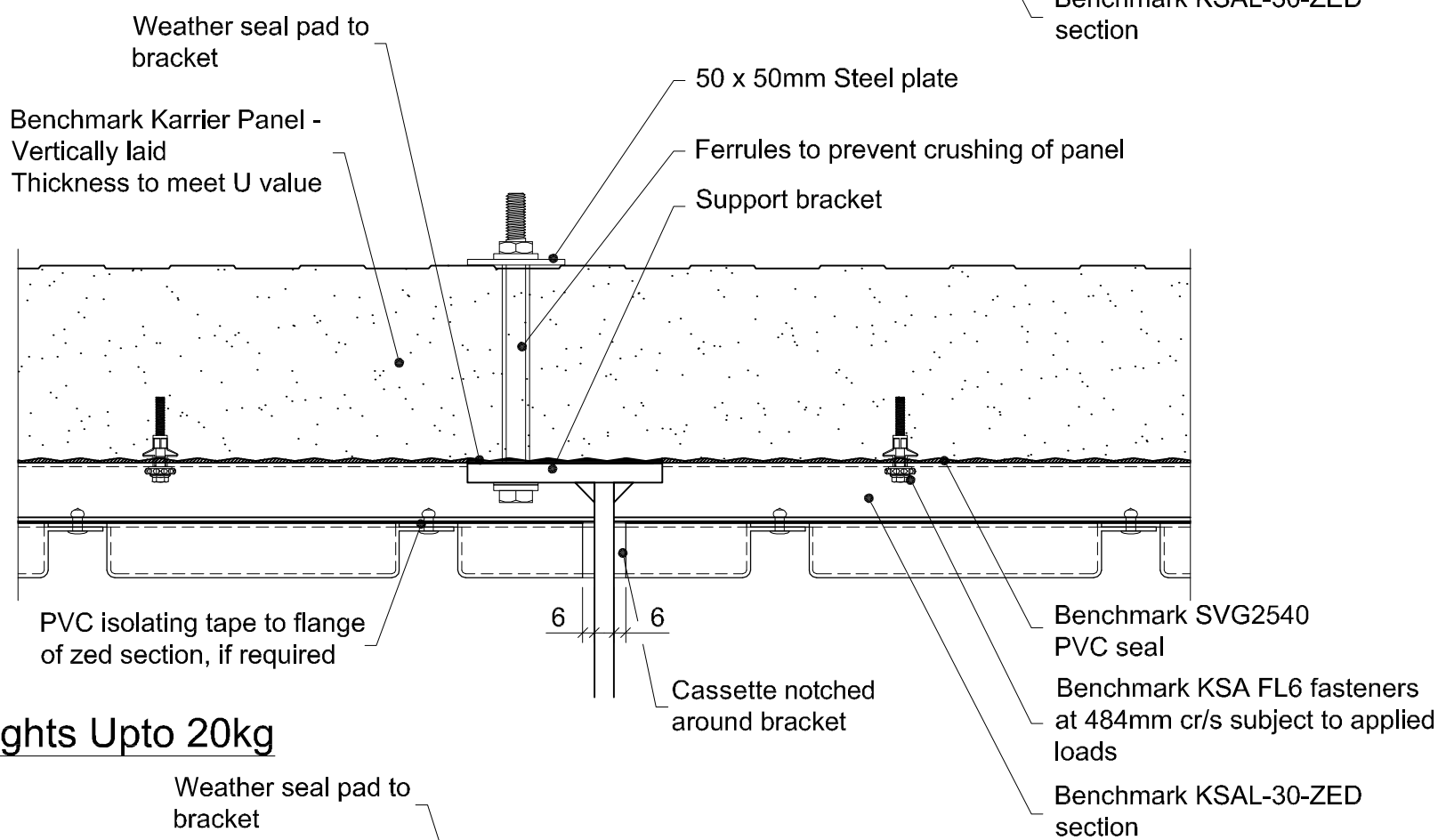


By Kingspan

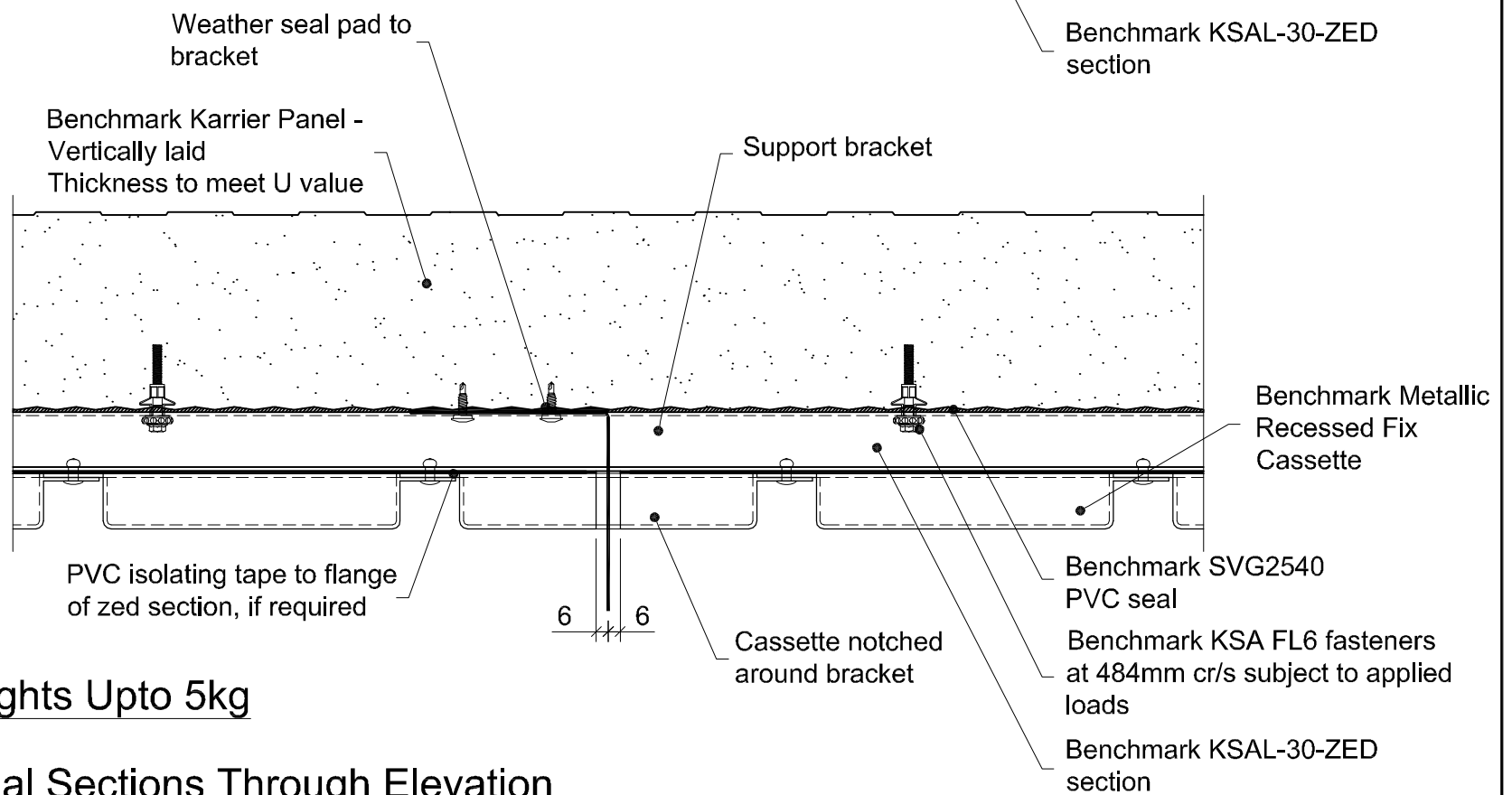
© Kingspan 2013



For Weights Over 20kg



For Weights Upto 20kg



For Weights Upto 5kg

Longitudinal Sections Through Elevation

Project:

System: Metallic Interlocking Plank + Karrier Panel

Drawing Title: Signage, Brise Soleil and Support Bracket Detail

Drawn By: BT

Date: 18/06/2012

Drawing N°.: MRF Vt KP Vt 016

Rev: 0

Greenfield Business Park No.2

Greenfield, Holywell

Flintshire. CH8 7GJ

Tel: 01352 716 100

Fax: 01352 710 161

Technical: 0800 970 9036

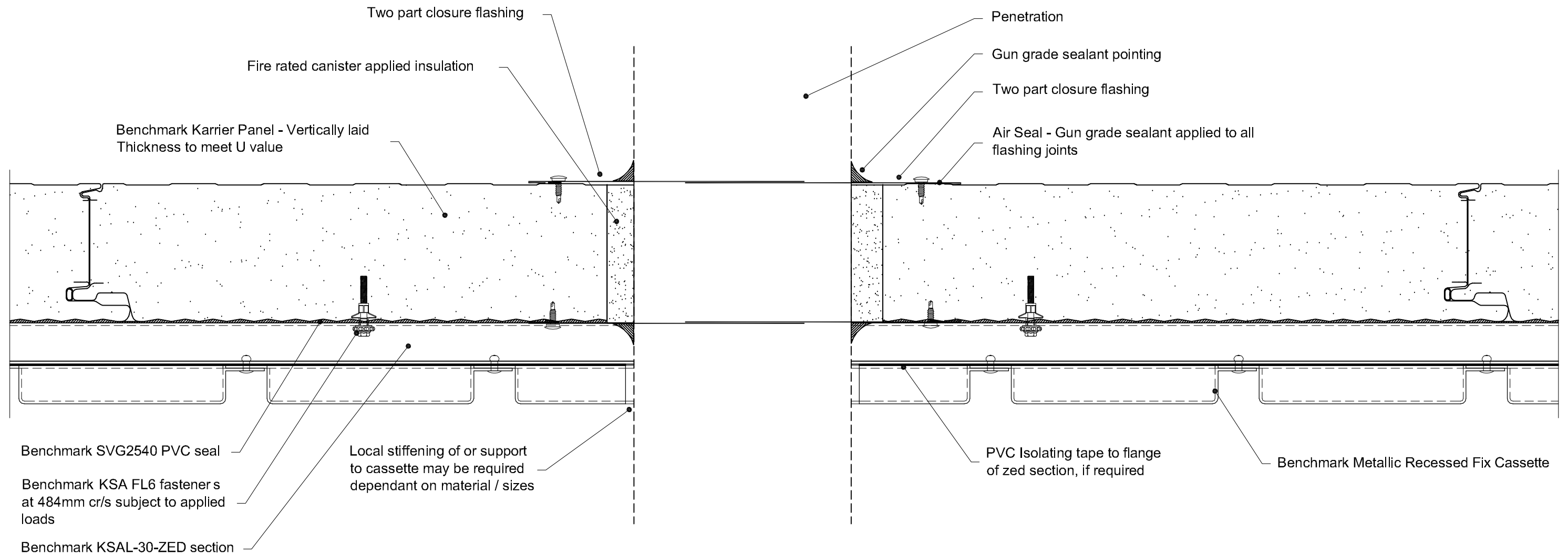
Email: technical@kingspanbenchmark.com

Website: www.kingspanbenchmark.com



By Kingspan

© Kingspan 2013



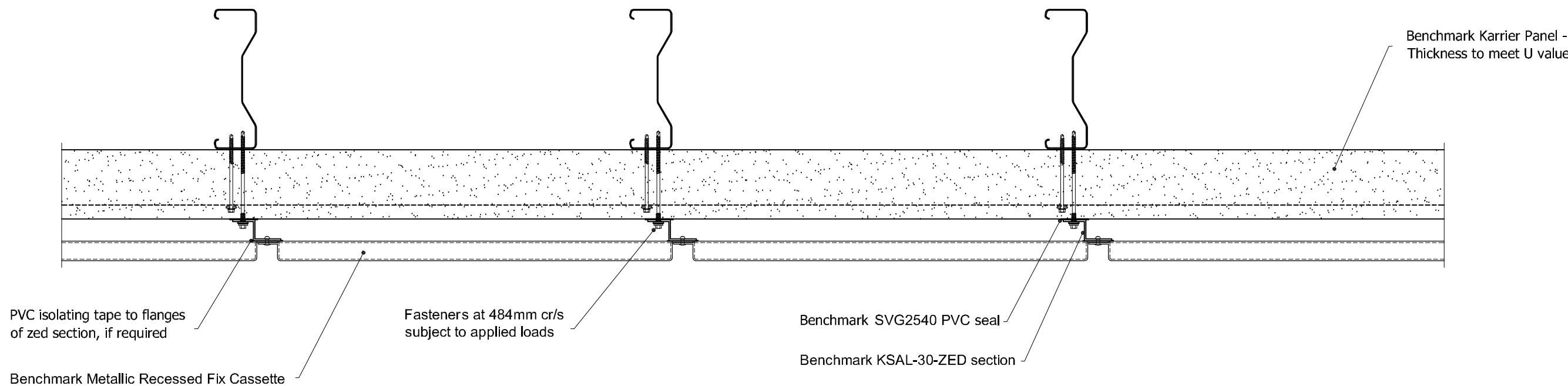
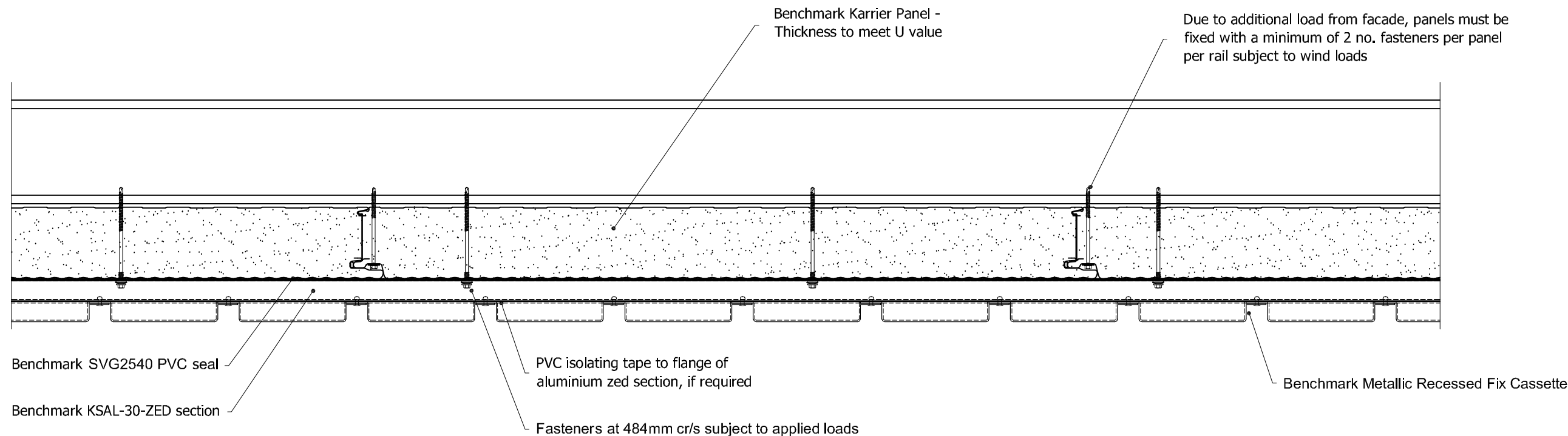
Any penetration must be a minimum of 100mm from the joint in the Karrier Panel.
Maximum penetration size of 300mm without structural trimmers to support Karrier Panel.

Project:	
System: Metallic Recessed Fix + Karrier Panel	Greenfield Business Park No.2 Greenfield, Holywell Flintshire. CH8 7GJ Tel: 01352 716 100 Fax: 01352 710 161 Technical: 0800 970 9036 Email: technical@kingspanbenchmark.com Website: www.kingspanbenchmark.com
Drawing Title: Penetration Detail	
Drawn By: BT	Date: 18/06/2012
Drawing N ^o .: MRF Vt KP Vt 017	Rev: 0



By Kingspan

© Kingspan 2013



Project:

System: Metallic Recessed Fixed + Karrier Panel

Drawing Title: Soffit Details

Drawn By: BT

Date: 18/06/2012

Drawing N°. : MIP Vt KP Vt 018

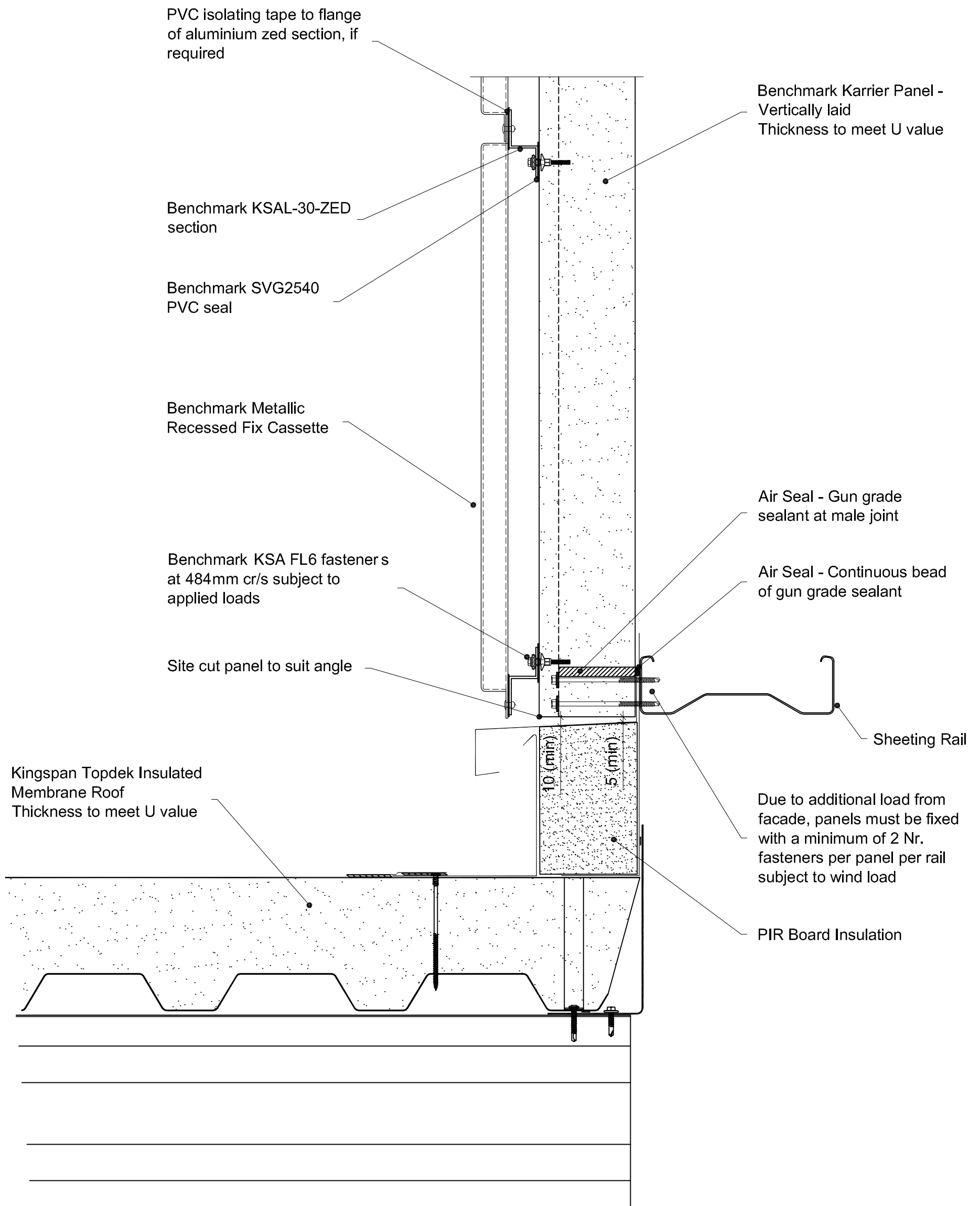
Rev: 0

Greenfield Business Park No.2
Greenfield, Holywell
Flintshire. CH8 7GJ
Tel: 01352 716 100
Fax: 01352 710 161
Technical: 0800 970 9036
Email: technical@kingspanbenchmark.com
Website: www.kingspanbenchmark.com



By Kingspan

© Kingspan 2013



Project:

System: Metallic Recessed Fix + Karrier Panel

Drawing Title: Lean To Detail

Drawn By: BT

Date: 18/06/2012

Drawing N°.: MRF Vt KP Vt 019

Rev: 0

Greenfield Business Park No.2

Greenfield, Holywell

Flintshire. CH8 7GJ

Tel: 01352 716 100

Fax: 01352 710 161

Technical: 0800 970 9036

Email: technical@kingspanbenchmark.com

Website: www.kingspanbenchmark.com



By Kingspan

© Kingspan 2013

Benchmark Karrier Panel -
Vertically laid
Thickness to meet U value

Benchmark Metallic
Recessed Fix Cassette

Benchmark SVG2540 PVC
seal

Benchmark KSA FL6 fasteners
at 484mm cr/s subject to applied
loads

Benchmark KSAL-30-ZED
section

PVC isolating tape to flange
of aluminium zed section, if
required

Movement
required

Movement Cassette

EPDM Membrane

Benchmark KSA FL6 fasteners
at 484mm cr/s subject to applied
loads

Benchmark Metallic
Recessed Fix Cassette

Air seal - Gun grade
sealant at male joint

Air seal - EPDM membrane

AWP joint filler and
gun grade sealant

Slotted connection

Air seal - Gun grade
sealant at male joint

Project:

System: Metallic Recessed Fix Cassette + Karrier Panel

Drawing Title: Movement Joint Detail

Drawn By: AE

Date: 18/06/2012

Drawing N°. MRF Vt KP Vt 100

Rev: 0

Greenfield Business Park No.2
Greenfield, Holywell
Flintshire. CH8 7GJ
Tel: 01352 716 100
Fax: 01352 710 161

Technical: 0800 970 9036

Email: technical@kingspanbenchmark.com

Website: www.kingspanbenchmark.com

BENCHMARK

By Kingspan

© Kingspan 2013