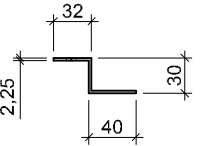
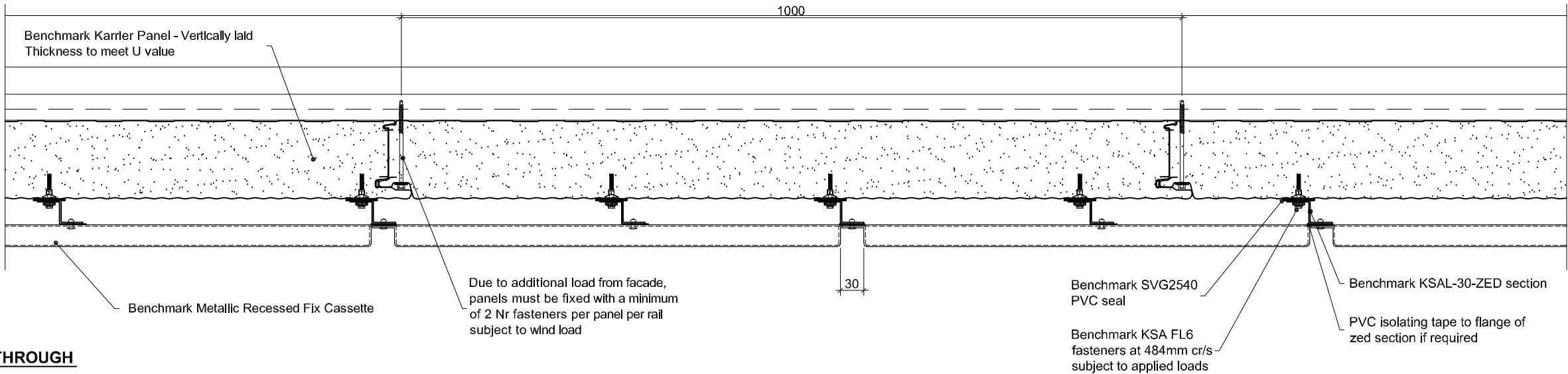
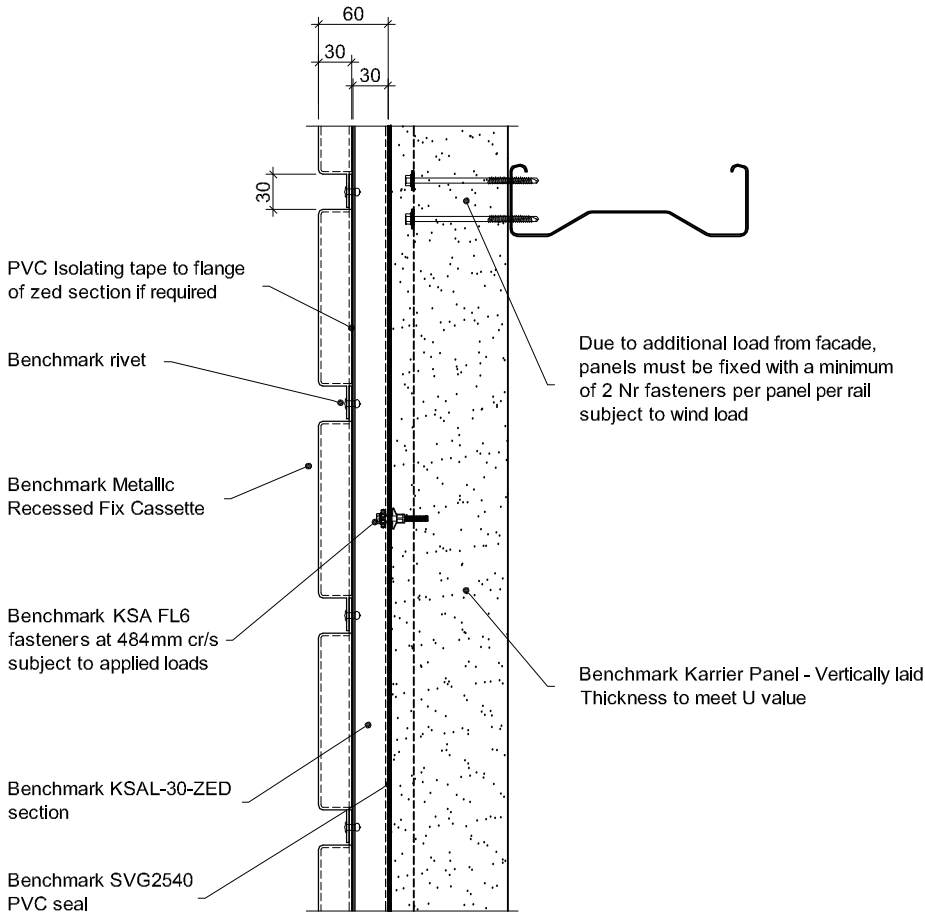


PLAN SECTION THROUGH



Benchmark KSAL-30-ZED Section



CROSS SECTION THROUGH

**Material, Gauges and Finishes and Colours**  
Please refer to latest product guide and website.

**Panel Sizes and Tolerances**  
Depends on material choice - please refer to  
current data sheet.

**Structural Rails**  
Design for lateral loads and for gravity load of  
façade system. System weights are provided in  
current product data sheets.

**Benchmark KSA FL6 Fasteners**  
Must not be positioned less than 100mm from a  
site cut edge.

**Dissimilar Metals**  
Contact between dissimilar metals must be  
prevented with PVC isolation tape.

**Handling**  
The surface of certain metals such as copper are  
susceptible to finger marking. Suitable clean gloves  
should be worn when handling these materials.

**Open Edges**  
Open edges should be fitted with insect mesh

**Cavity Barriers**  
Cavity barriers are not supplied with the Benchmark  
Facade system and must be specified and sourced  
separately.

**Steelwork Tolerances**  
The permissible steelwork tolerance between the  
bearing planes of adjacent supports is  $\pm 5\text{mm}$

Project:

System: Metallic Recessed Fix + Karrier Panel

Drawing Title: System Layout

Drawn By: BT

Date: 15/06/2012

Drawing N°. : MRF KP Vt 001

Rev: 0

Greenfield Business Park No.2  
Greenfield, Holywell  
Flintshire. CH8 7GJ  
Tel: 01352 716 100  
Fax: 01352 710 161  
Technical: 0800 970 9036  
Email: [technical@kingspanbenchmark.com](mailto:technical@kingspanbenchmark.com)  
Website: [www.kingspanbenchmark.com](http://www.kingspanbenchmark.com)



By Kingspan

© Kingspan 2013

PVC isolating tape to flange of zed section if required

Benchmark Metallic Recessed Fix Cassette

Benchmark KSAL-30-ZED section

Benchmark SVG2540 PVC seal

Benchmark KSA FL6 fasteners at 484mm cr/s subject to applied loads

External drip flashing with sealed joints. Sealed to inner drip flashing

Inner drip flashing

Air Seal - Compressible foam tape

Ground Floor Slab

Benchmark Karrier Panel - Vertically laid  
Thickness to meet U value

Due to additional load from facade, panels must be fixed with a minimum of 2 Nr. fasteners per panel per rail subject to wind loads

Air Seal - Continuous bead of gun grade sealant

Sheeting Rail

Air Seal - Gun grade sealant at male joint

PIR board insulation

Project:

System: Metallic Recessed Fix + Karrier Panel

Drawing Title: Drip Detail

Drawn By: BT

Date: 15/06/2012

Drawing N<sup>o</sup>.: MRF KP Vt 002

Rev: 0

Greenfield Business Park No.2

Greenfield, Holywell

Flintshire. CH8 7GJ

Tel: 01352 716 100

Fax: 01352 710 161

Technical: 0800 970 9036

Email: technical@kingspanbenchmark.com

Website: www.kingspanbenchmark.com



By Kingspan

© Kingspan 2013

PVC isolating tape to  
flange of zed section  
if required

Benchmark Metallic  
Recessed Fix Cassette

Benchmark KSAL-30-ZED  
section

Benchmark SVG2540  
PVC seal

Benchmark KSA FL6  
fasteners at 484mm cr/s  
subject to applied loads

External drip flashing with  
sealed joints. Sealed to  
inner drip flashing

Inner Drip Flashing

Air Seal - Compressible  
foam tape

Brickwork

Benchmark Karrier Panel -  
Vertically laid  
Thickness to meet U value

Due to additional load from  
facade, panels must be fixed  
with a minimum of 2 Nr. fasteners  
per panel per rail subject to wind  
loads

Air Seal - Gun grade sealant  
at male joint

Sheeting Rail

Air Seal - Continuous bead  
of gun grade sealant

PIR board insulation

Project:

System: Metallic Recessed Fix + Karrier Panel

Drawing Title: Drip Detail

Drawn By: BT

Date: 15/06/2012

Drawing N°. : MRF KP Vt 003

Rev: 0

Greenfield Business Park No.2

Greenfield, Holywell

Flintshire. CH8 7GJ

Tel: 01352 716 100

Fax: 01352 710 161

Technical: 0800 970 9036

Email: technical@kingspanbenchmark.com

Website: www.kingspanbenchmark.com



By Kingspan

© Kingspan 2013

Benchmark Karrier Panel  
Vertically laid  
Thickness to meet U value

Benchmark SVG2540 PVC seal

Benchmark KSA FL6 fasteners  
at 484mm cr/s subject to applied  
loads

Benchmark KSAL-30-ZED section

PVC isolating tape to flange  
of zed section if required

Low profile head fasteners at  
500mm maximum centers

Benchmark Metallic Recessed Fix  
Cassette External Corner Unit

Vinyl faced butyl rubber sealing strip

Fire Rated Canister  
Applied Insulation

Low profile head fasteners at  
500mm maximum centers

Sheeting Rail

Air Seal - Continuous Bead Of Gun Grade  
Sealant

Internal cleader angle by steel  
sub-contractor with Air seal - Vapourflex  
sealant applied at joints

Air Seal - Continuous bead of  
gun grade sealant

Sheeting Rail

Benchmark KSA FL6 fasteners  
at 484mm cr/s subject to applied loads

Benchmark Karrier Panel - Vertically laid  
Thickness to meet U value

Benchmark Metallic Recessed Fix Cassette

Project:

System: Metallic Recessed Fix + Karrier Panel

Drawing Title: External Corner

Drawn By: BT

Date: 15/06/2012

Drawing N°. : MRF KP Vt 004

Rev: 0

Greenfield Business Park No.2

Greenfield, Holywell

Flintshire, CH8 7GJ

Tel: 01352 716 100

Fax: 01352 710 161

Technical: 0800 970 9036

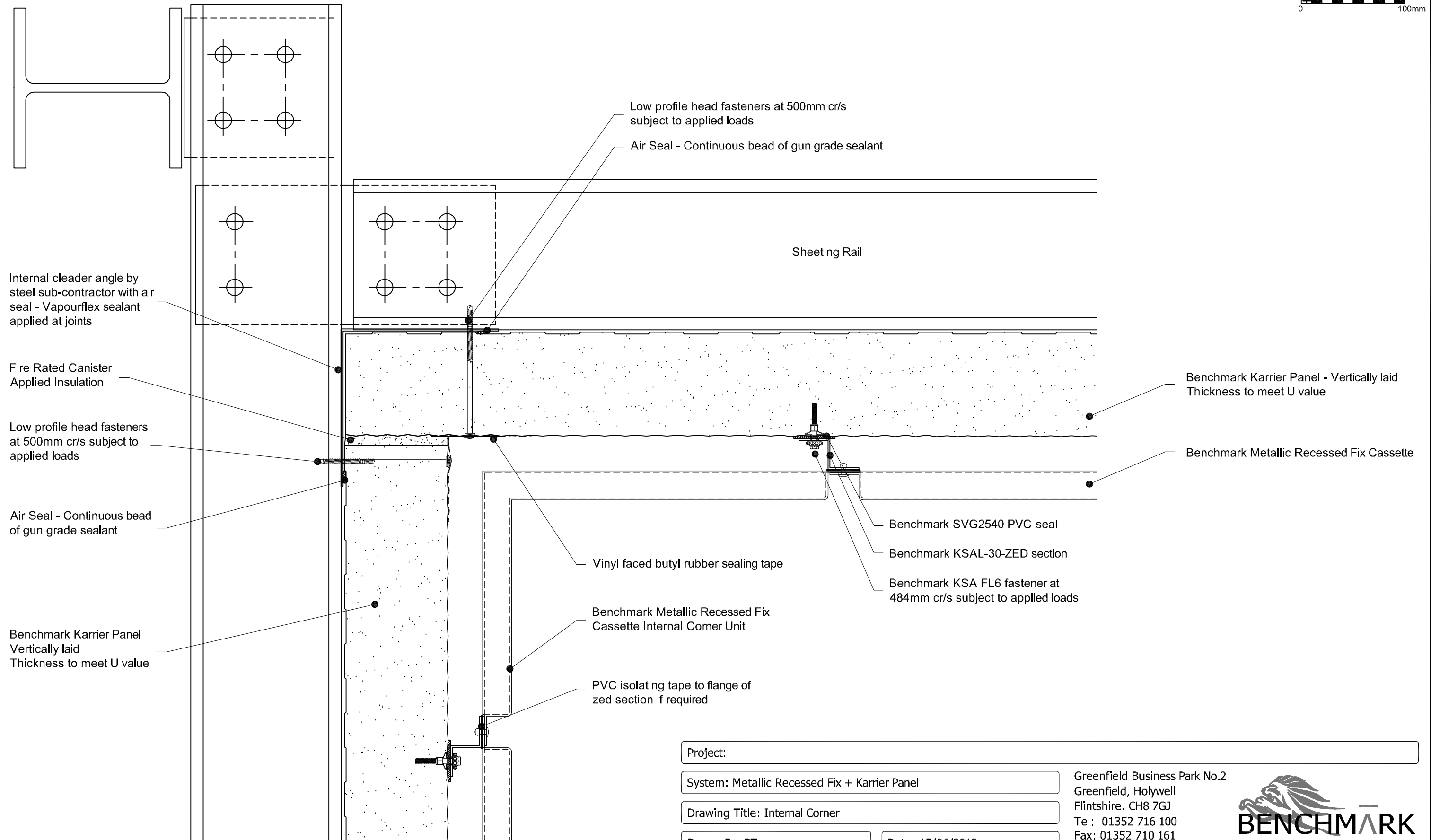
Email: technical@kingspanbenchmark.com

Website: www.kingspanbenchmark.com



By Kingspan

© Kingspan 2013



Project:

System: Metallic Recessed Fix + Karrier Panel

Drawing Title: Internal Corner

Drawn By: BT

Date: 15/06/2012

Drawing N<sup>o</sup>.: MRF KP Vt 005

Rev: 0

Greenfield Business Park No.2  
Greenfield, Holywell  
Flintshire. CH8 7GJ  
Tel: 01352 716 100  
Fax: 01352 710 161

Technical: 0800 970 9036  
Email: [technical@kingspanbenchmark.com](mailto:technical@kingspanbenchmark.com)  
Website: [www.kingspanbenchmark.com](http://www.kingspanbenchmark.com)

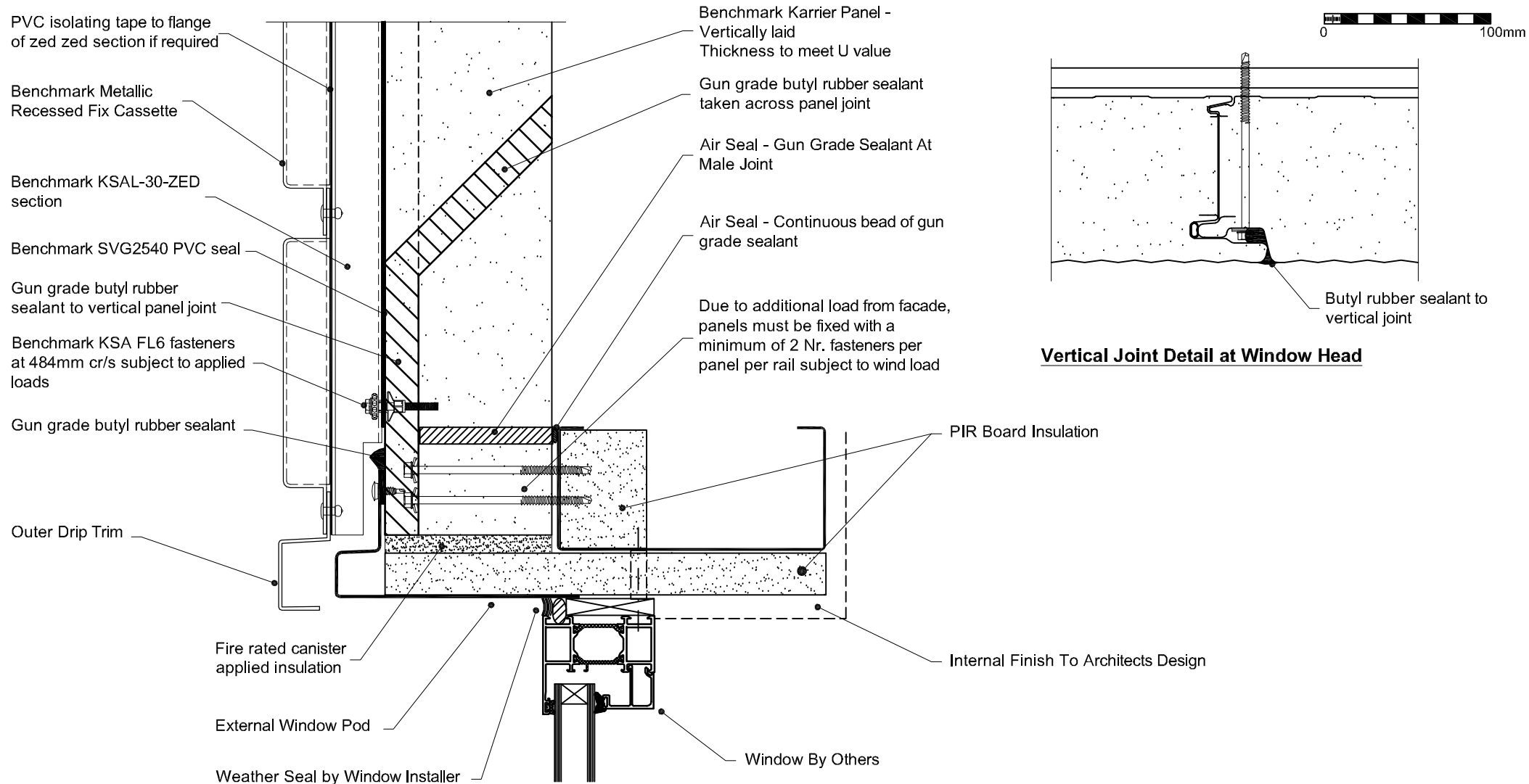


By Kingspan

© Kingspan 2013



© Kingspan 2013



**Vertical Joint Detail at Window Head**

**Note**  
Vertical panel joints above window pod to be sealed with butyl rubber sealant (see detail).

Project:

System: Metallic Recessed Fix + Karrier Panel

Drawing Title: Window Head

Drawn By: BT

Date: 15/06/2012

Drawing N<sup>o</sup>.: MRF KP Vt 007

Rev: 0

Greenfield Business Park No.2  
Greenfield, Holywell  
Flintshire, CH8 7GJ  
Tel: 01352 716 100  
Fax: 01352 710 161

Technical: 0800 970 9036

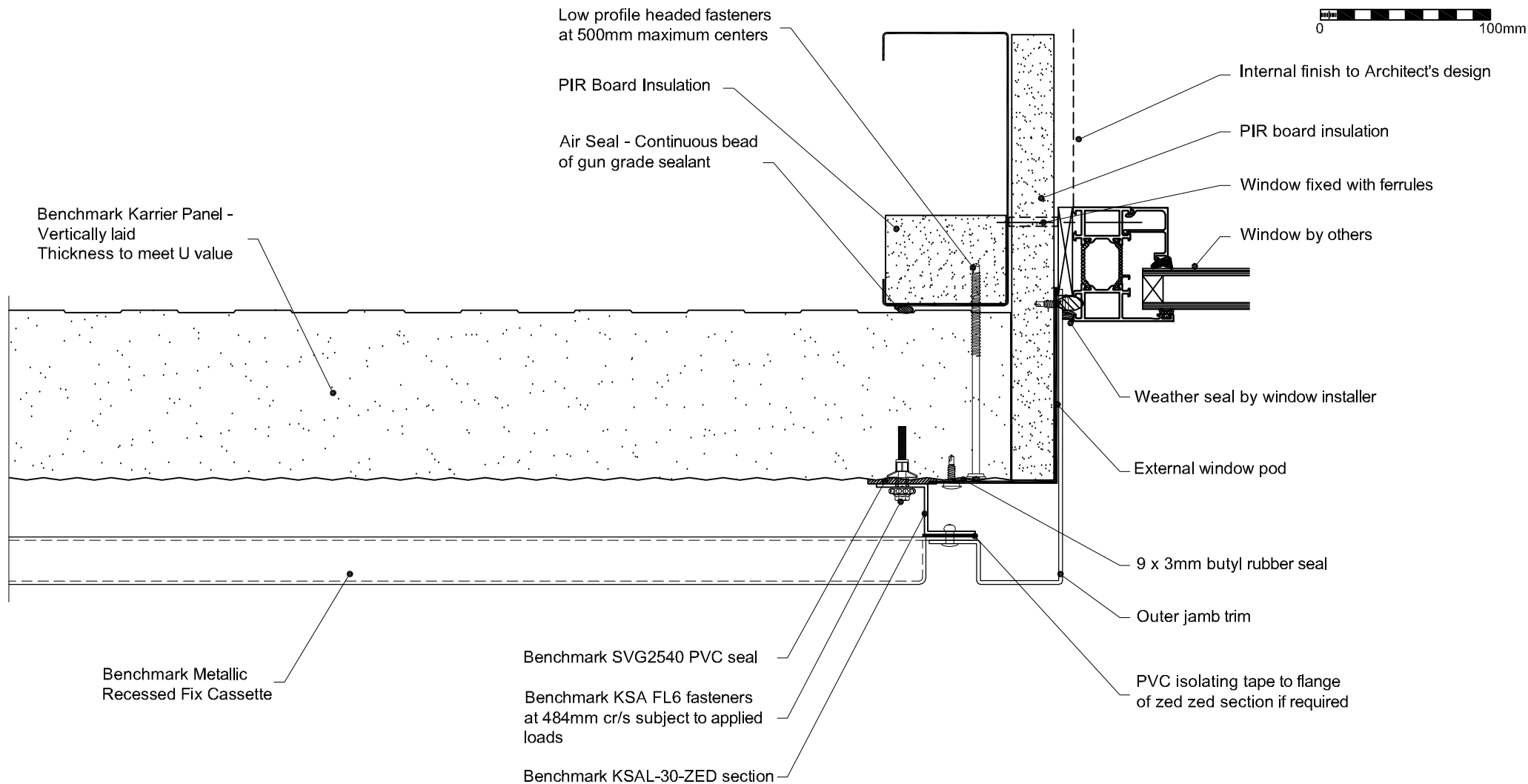
Email: [technical@kingspanbenchmark.com](mailto:technical@kingspanbenchmark.com)

Website: [www.kingspanbenchmark.com](http://www.kingspanbenchmark.com)



By Kingspan

© Kingspan 2013



Project:	
System: Metallic Recessed Fix + Karrier Panel	
Drawing Title: Window Jamb	
Drawn By: BT	Date: 15/06/2012
Drawing N <sup>o</sup> .: MRF KP Vt 008	Rev: 0

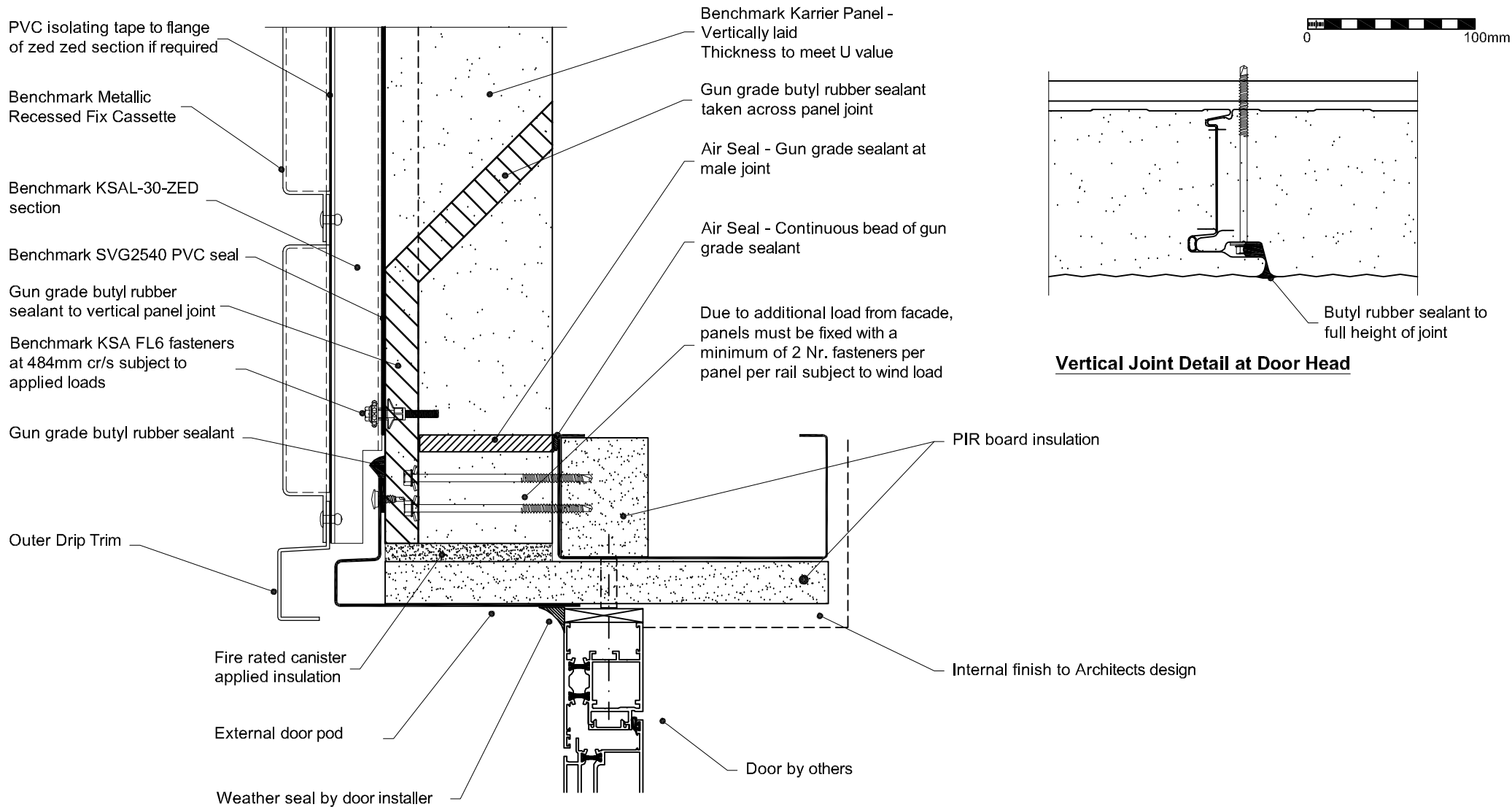
Greenfield Business Park No.2  
Greenfield, Holywell  
Flintshire, CH8 7GJ  
Tel: 01352 716 100  
Fax: 01352 710 161  
Technical: 0800 970 9036  
Email: [technical@kingspanbenchmark.com](mailto:technical@kingspanbenchmark.com)  
Website: [www.kingspanbenchmark.com](http://www.kingspanbenchmark.com)

By Kingspan

© Kingspan 2013





**Vertical Joint Detail at Door Head**

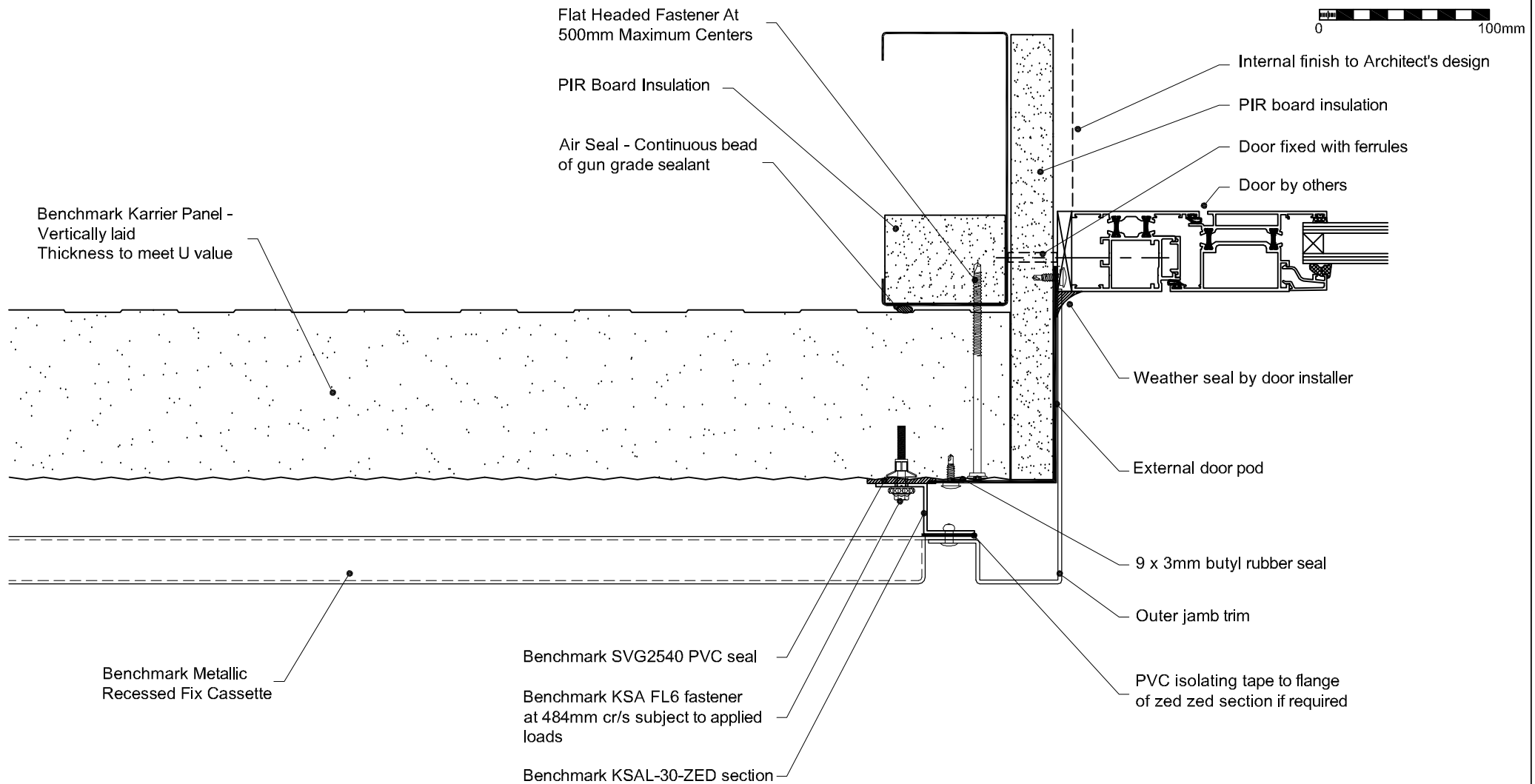
**Note**

Vertical panel joints above window pod to be sealed with butyl rubber sealant (see detail).

Project:	
System: Metallic Recessed Fix + Karrier Panel	
Drawing Title: Door Head	
Drawn By: BT	Date: 15/06/2012
Drawing N <sup>o</sup> .: MRF KP Vt 009	Rev: 0


Greenfield Business Park No.2  
Greenfield, Holywell  
Flintshire, CH8 7GJ  
Tel: 01352 716 100  
Fax: 01352 710 161  
Technical: 0800 970 9036  
Email: [technical@kingspanbenchmark.com](mailto:technical@kingspanbenchmark.com)  
Website: [www.kingspanbenchmark.com](http://www.kingspanbenchmark.com)

**BENCHMARK**  
By Kingspan  
© Kingspan 2013



Project:	
System: Metallic Recessed Fix + Karrier Panel	
Drawing Title: Door Jamb	
Drawn By: BT	Date: 15/06/2012
Drawing N <sup>o</sup> .: MRF KP Vt 010	Rev: 0

Greenfield Business Park No.2  
Greenfield, Holywell  
Flintshire, CH8 7GJ  
Tel: 01352 716 100  
Fax: 01352 710 161  
Technical: 0800 970 9036  
Email: [technical@kingspanbenchmark.com](mailto:technical@kingspanbenchmark.com)  
Website: [www.kingspanbenchmark.com](http://www.kingspanbenchmark.com)



**By Kingspan**

© Kingspan 2013



Benchmark Metallic  
Recessed Fix Cassette

Benchmark SVG2540  
PVC seal

Benchmark KSAL-30-ZED  
section

Benchmark KSA FL6 fastener  
at 484mm cr/s subject to  
applied loads

PVC isolating tape to  
flange of zed  
section if required

EPDM Membrane (by others)  
installed in sequence on site

Curtain walling system (by others)

Benchmark Karrier Panel -  
Vertically laid  
Thickness to meet U value

Air Seal - Continuous Bead Of  
Gun Grade Sealant

Due To Additional Load From  
facade, Panels Must Be Fixed  
with a minimum of 2 Nr.  
Fasteners Per panel per rail  
subject to wind loads

Air Seal - Gun grade sealant  
at male joint

PIR insulation board

Internal finish to Architects design

Air Seal - Internal membrane  
(by others) installed in  
sequence on site

PIR insulation board

Project:

System: Metallic Recessed Fix + Karrier Panel

Drawing Title: Curtain Walling Head

Drawn By: BT

Date: 15/06/2012

Drawing N<sup>o</sup>.: MRF KP Vt 011

Rev: 0

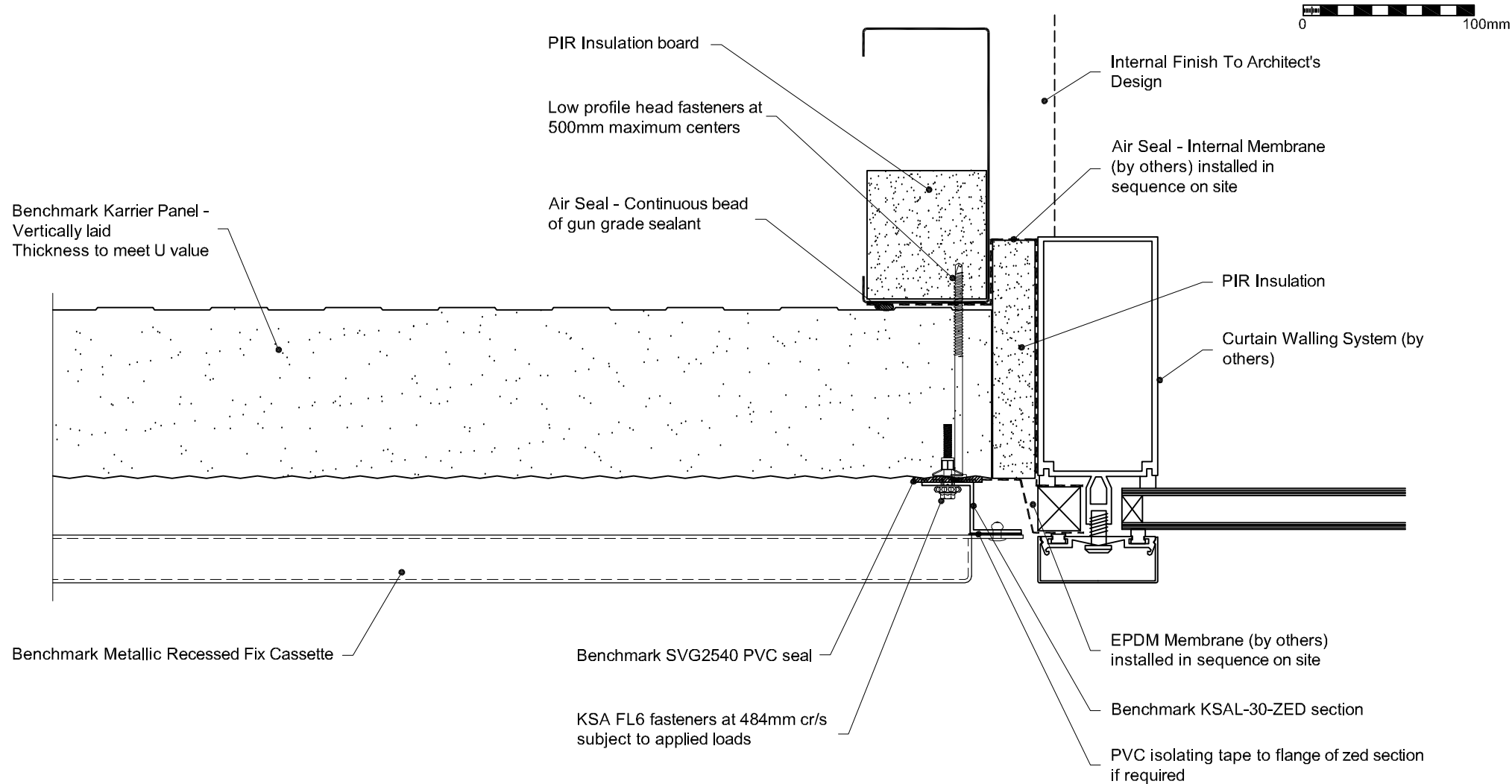
Greenfield Business Park No.2  
Greenfield, Holywell  
Flintshire, CH8 7GJ  
Tel: 01352 716 100  
Fax: 01352 710 161

Technical: 0800 970 9036  
Email: [technical@kingspanbenchmark.com](mailto:technical@kingspanbenchmark.com)  
Website: [www.kingspanbenchmark.com](http://www.kingspanbenchmark.com)



By Kingspan

© Kingspan 2013



Project:

System: Metallic Recessed Fix + Karrier Panel

Drawing Title: Curtain Walling Jamb

Drawn By: BT

Date: 15/06/2012

Drawing N°.: MRF KP Vt 012

Rev: 0

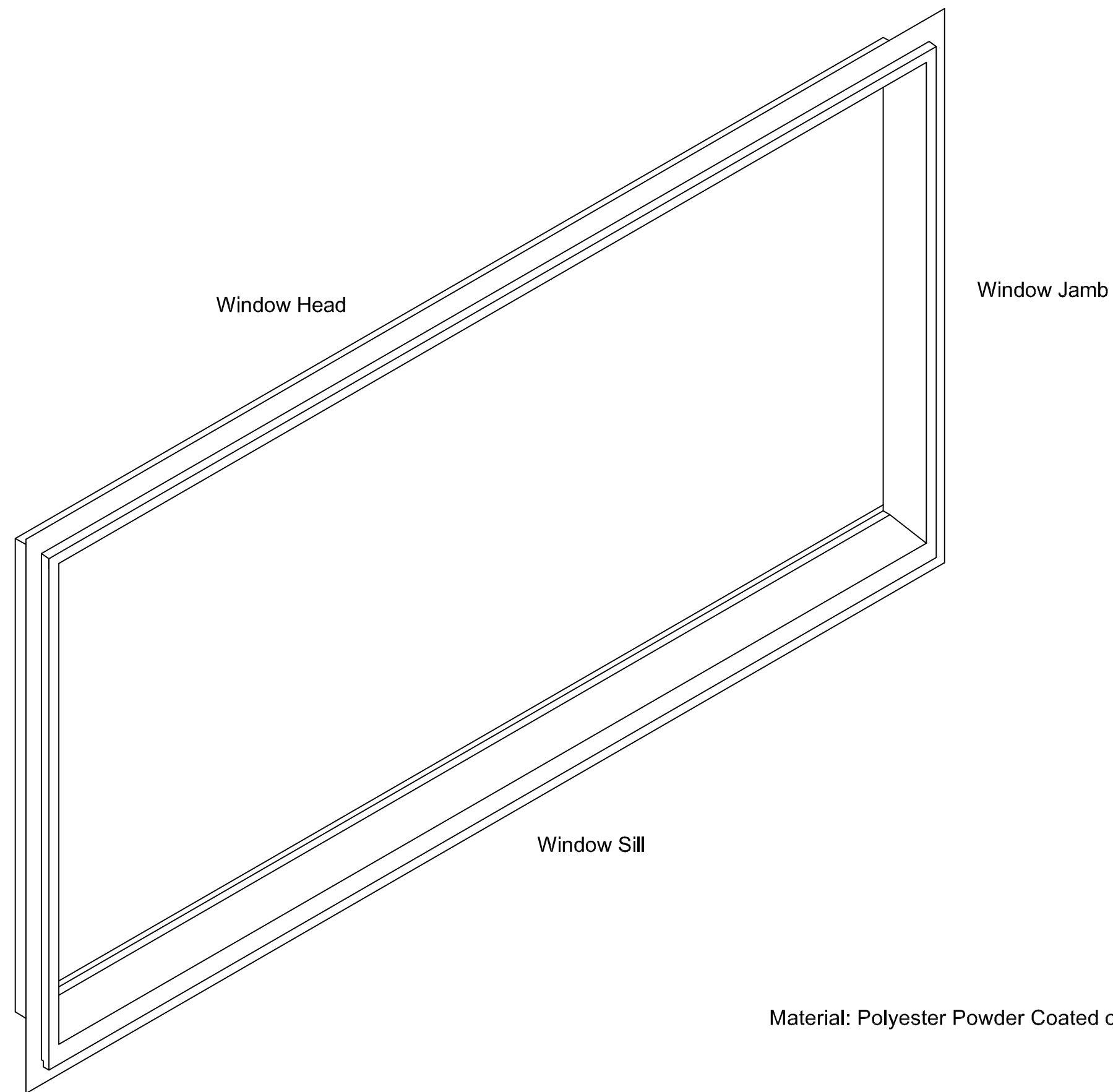
Greenfield Business Park No.2  
Greenfield, Holywell  
Flintshire. CH8 7GJ  
Tel: 01352 716 100  
Fax: 01352 710 161  
Technical: 0800 970 9036

Email: [technical@kingspanbenchmark.com](mailto:technical@kingspanbenchmark.com)  
Website: [www.kingspanbenchmark.com](http://www.kingspanbenchmark.com)



By Kingspan

© Kingspan 2013



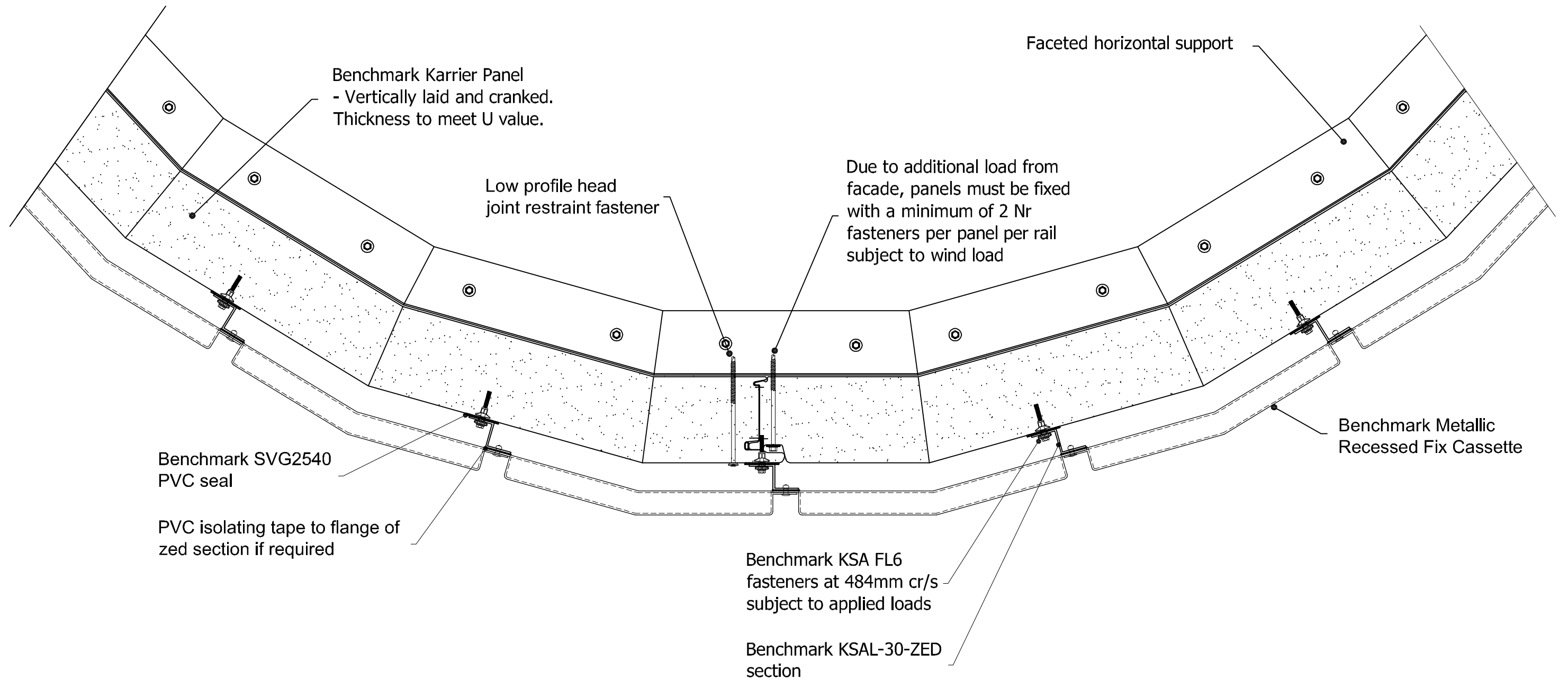
Material: Polyester Powder Coated or Mill Finished Aluminium


Generic only - component  
dimensions tailored to suit specific  
application

Project:	
System: Metallic Recessed Fix + Karrier Panel	Greenfield Business Park No.2 Greenfield, Holywell Flintshire. CH8 7GJ Tel: 01352 716 100 Fax: 01352 710 161 Technical: 0800 970 9036 Email: technical@kingspanbenchmark.com Website: www.kingspanbenchmark.com
Drawing Title: Window Pod - Isometric	
Drawn By: BT	Date: 15/06/2012
Drawing N°. MRF KP Vt 013	Rev: 0



By Kingspan  
© Kingspan 2013



Project:		 By Kingspan © Kingspan 2013
System: Metallic Recessed Fix + Karrier Panel		
Drawing Title: Curved Wall Detail		
Drawn By: BT	Date: 15/06/2012	
Drawing N <sup>o</sup> . MRF KP Vt 014	Rev: 0	
Greenfield Business Park No.2 Greenfield, Holywell Flintshire. CH8 7GJ Tel: 01352 716 100 Fax: 01352 710 161 Technical: 0800 970 9036 Email: <a href="mailto:technical@kingspanbenchmark.com">technical@kingspanbenchmark.com</a> Website: <a href="http://www.kingspanbenchmark.com">www.kingspanbenchmark.com</a>		

AWP joint filler and gun grade sealant

Air Seal - Gun grade sealant at male joint

Air Seal - Continuous bead of gun grade sealant

Due to additional load from facade, panels must be fixed with a minimum of 2 Nr fasteners per panel per rail subject to wind load

PVC isolating tape to flange of zed section if required

Benchmark KSAL-30-ZED section

Benchmark SVG2540 PVC seal

Benchmark Metallic Recessed Fix Cassette

Benchmark KSA FL6 fasteners at 484mm cr/s subject to applied loads

Parapet Coping

Membrane taken over parapet

PIR board insulation

Kingspan Topdek Insulated Membrane Roof Thickness to meet U value

Kingspan Topdek Insulated Membrane Roof Thickness to meet U value

0 100mm

Project:

System: Metallic Recessed Fix + Karrier Panel

Drawing Title: Parapet detail

Drawn By: BT

Date: 15/06/2012

Drawing N°.: MRF KP Vt 015

Rev: 0

Greenfield Business Park No.2

Greenfield, Holywell

Flintshire. CH8 7GJ

Tel: 01352 716 100

Fax: 01352 710 161

Technical: 0800 970 9036

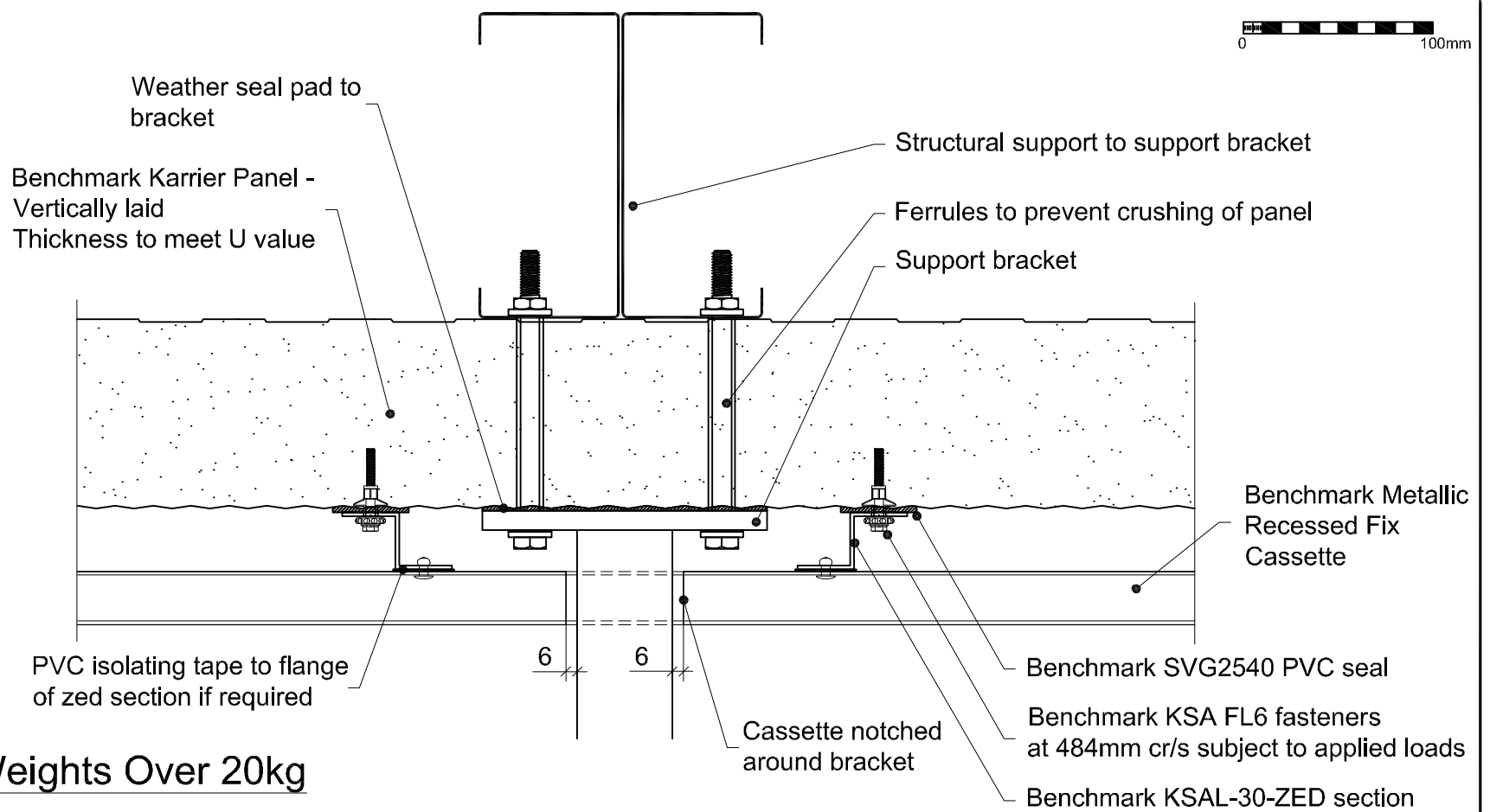
Email: [technical@kingspanbenchmark.com](mailto:technical@kingspanbenchmark.com)

Website: [www.kingspanbenchmark.com](http://www.kingspanbenchmark.com)

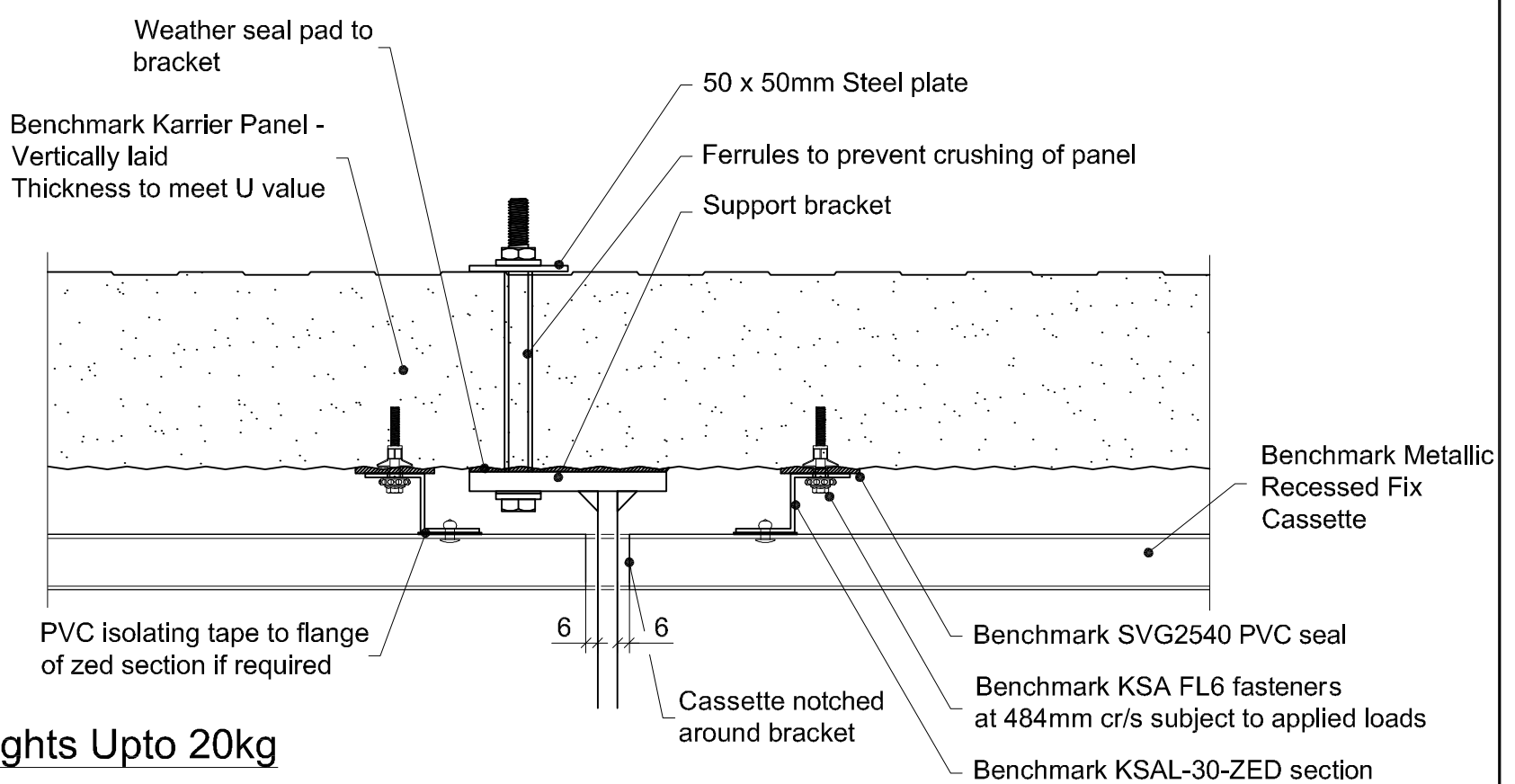


By Kingspan

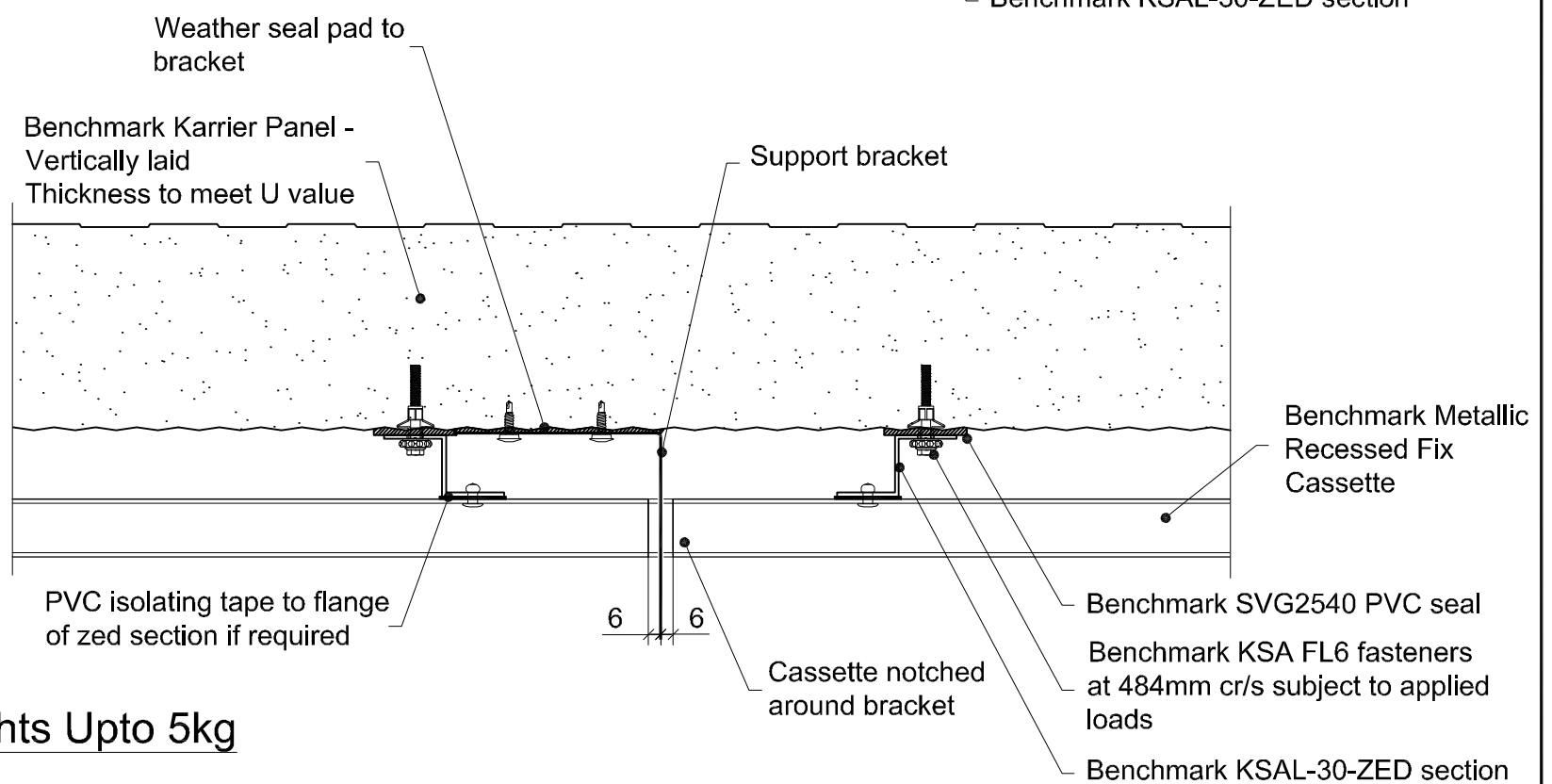
© Kingspan 2013



### For Weights Over 20kg



### For Weights Upto 20kg



### For Weights Upto 5kg

## Longitudinal Sections Through Elevation

Project:

System: Metallic Interlocking Plank + Karrier Panel

Drawing Title: Signage, Brise Soleil and Support Bracket Detail

Drawn By: BT

Date: 15/06/2012

Drawing N°.: MRF KP Vt 016

Rev: 0

Greenfield Business Park No.2

Greenfield, Holywell

Flintshire. CH8 7GJ

Tel: 01352 716 100

Fax: 01352 710 161

Technical: 0800 970 9036

Email: technical@kingspanbenchmark.com

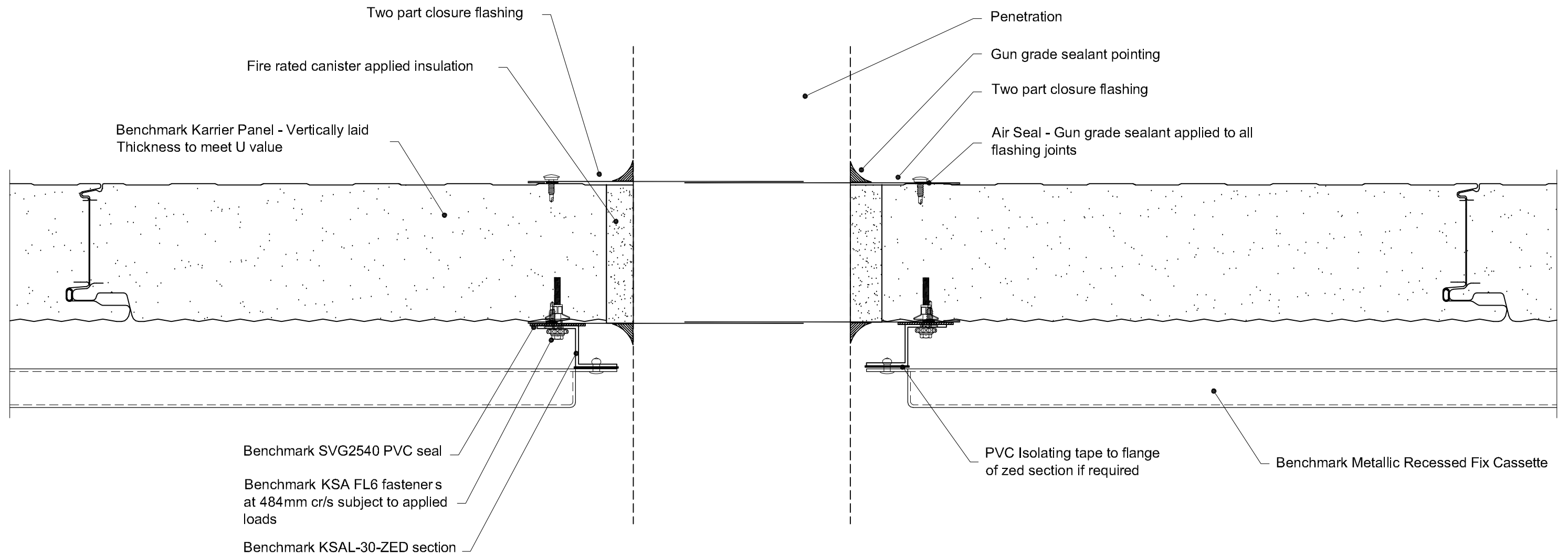
Website: www.kingspanbenchmark.com



By Kingspan

© Kingspan 2013





Any penetration must be a minimum of 100mm from the joint in the Karrier Panel.  
Maximum penetration size of 300mm without structural trimmers to support Karrier Panel.

Project:

System: Metallic Recessed Fix + Karrier Panel

Drawing Title: Penetration Detail

Drawn By: BT

Date: 15/06/2012

Drawing N°. : MRF KP Vt 017

Rev: 0

Greenfield Business Park No.2  
Greenfield, Holywell  
Flintshire. CH8 7GJ

Tel: 01352 716 100

Fax: 01352 710 161

Technical: 0800 970 9036

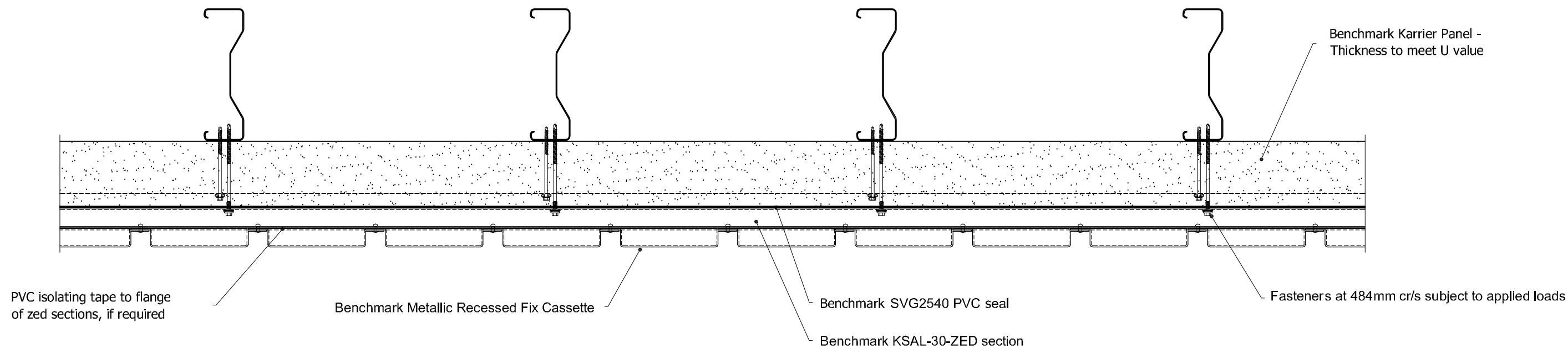
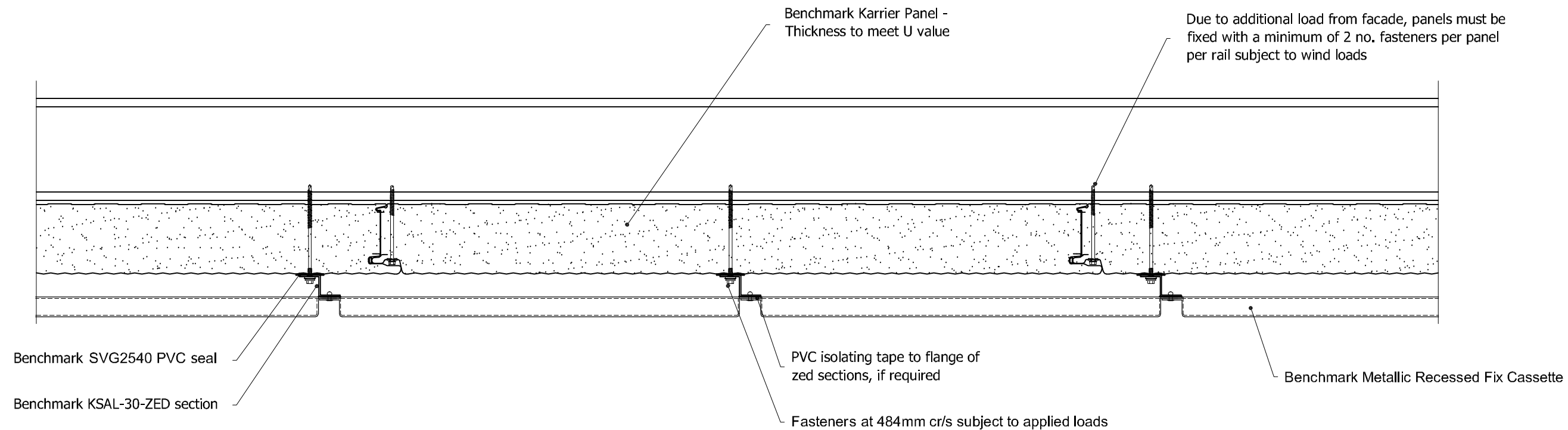
Email: [technical@kingspanbenchmark.com](mailto:technical@kingspanbenchmark.com)

Website: [www.kingspanbenchmark.com](http://www.kingspanbenchmark.com)



By Kingspan

© Kingspan 2013



Project:

System: Metallic Recessed Fixed + Karrier Panel

Drawing Title: Soffit Details

Drawn By: BT

Date: 15/06/2012

Drawing N<sup>o</sup>.: MRF KP Vt 018

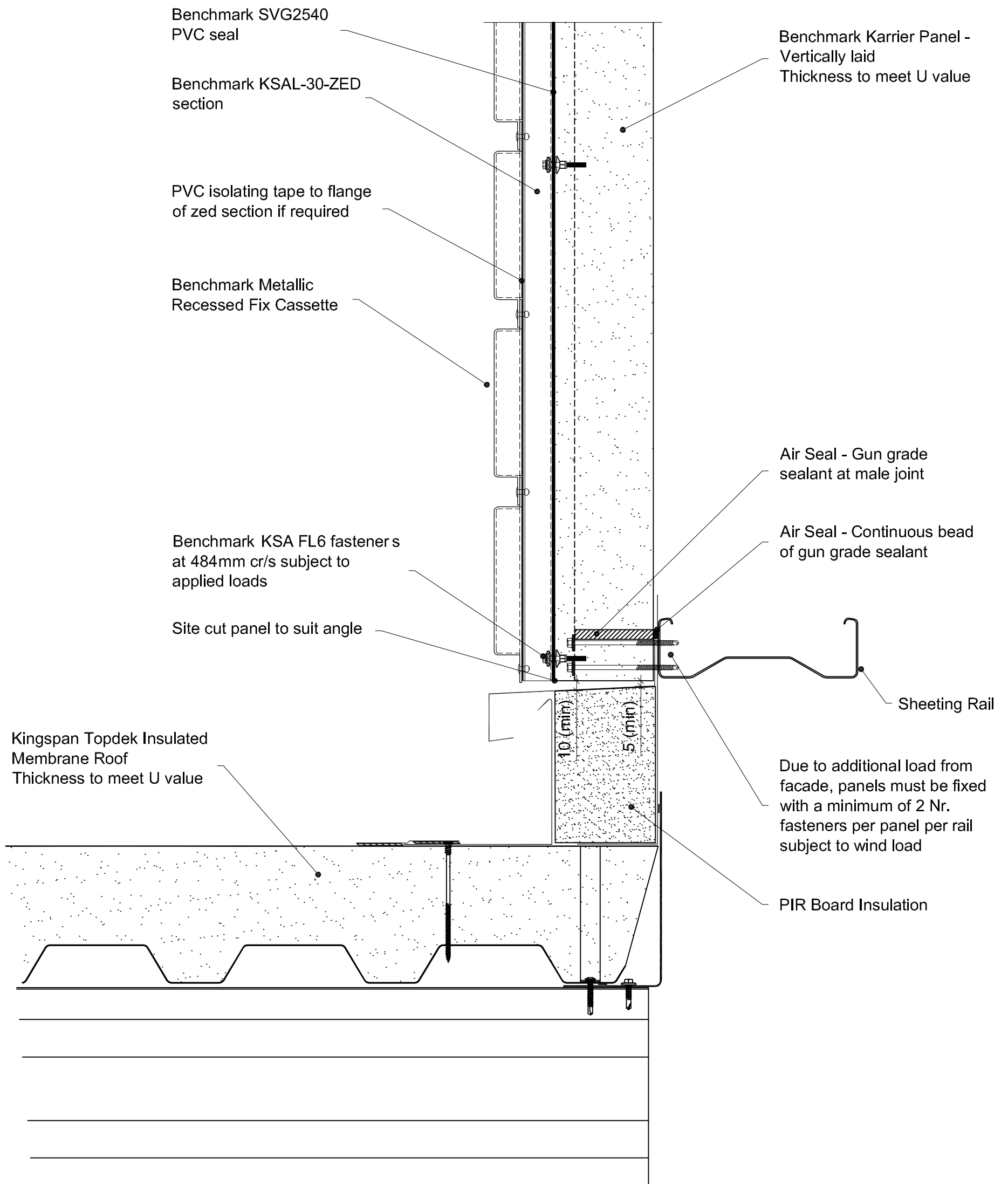
Rev: 0

Greenfield Business Park No.2  
Greenfield, Holywell  
Flintshire. CH8 7GJ  
Tel: 01352 716 100  
Fax: 01352 710 161  
Technical: 0800 970 9036  
Email: [technical@kingspanbenchmark.com](mailto:technical@kingspanbenchmark.com)  
Website: [www.kingspanbenchmark.com](http://www.kingspanbenchmark.com)



By Kingspan

© Kingspan 2013



Project:

System: Metallic Recessed Fix + Karrier Panel

Drawing Title: Spandrel Detail

Drawn By: BT

Date: 15/06/2012

Drawing N°.: MRF KP Vt 019

Rev: 0

Greenfield Business Park No.2

Greenfield, Holywell

Flintshire. CH8 7GJ

Tel: 01352 716 100

Fax: 01352 710 161

Technical: 0800 970 9036

Email: technical@kingspanbenchmark.com

Website: www.kingspanbenchmark.com



By Kingspan

© Kingspan 2013

Benchmark Metallic  
Recessed Fix Cassette

PVC isolating tape to flange  
of zed zed section if required

Benchmark KSAL-30-ZED  
section

Benchmark SVG2540 PVC seal

Benchmark KSA FL6 fasteners  
at 484mm cr/s subject to applied  
loads

Movement  
required  
↕

Movement Cassette

EPDM Membrane

Benchmark KSA FL6 fasteners  
at 484mm cr/s subject to applied  
loads

Benchmark SVG2540 PVC seal

Benchmark KSAL-30-ZED  
section

Benchmark Metallic  
Recessed Fix Cassette

Benchmark Karrier Panel - Vertically laid  
Thickness to meet U value

Air seal - Gun grade  
sealant at male joint

Air seal - EPDM membrane

AWP joint filler and  
gun grade sealant

Slotted connection

Air seal - Gun grade  
sealant at male joint

Project:

System: Metallic Recessed Fix Cassette + Karrier Panel

Drawing Title: Movement Joint Detail

Drawn By: AE

Date: 15/06/2012

Drawing N°. MRF KP Vt 100

Rev: 0

Greenfield Business Park No.2  
Greenfield, Holywell  
Flintshire. CH8 7GJ  
Tel: 01352 716 100  
Fax: 01352 710 161

Technical: 0800 970 9036

Email: [technical@kingspanbenchmark.com](mailto:technical@kingspanbenchmark.com)

Website: [www.kingspanbenchmark.com](http://www.kingspanbenchmark.com)

 **BENCHMARK**

By Kingspan

© Kingspan 2013